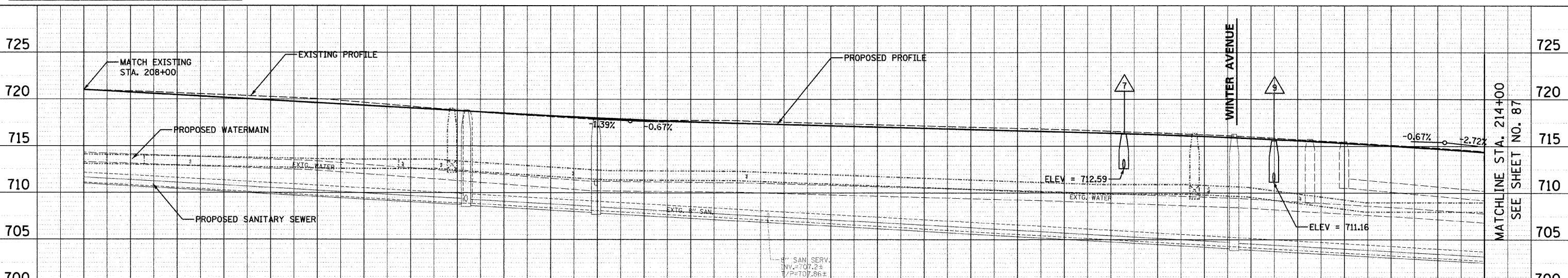
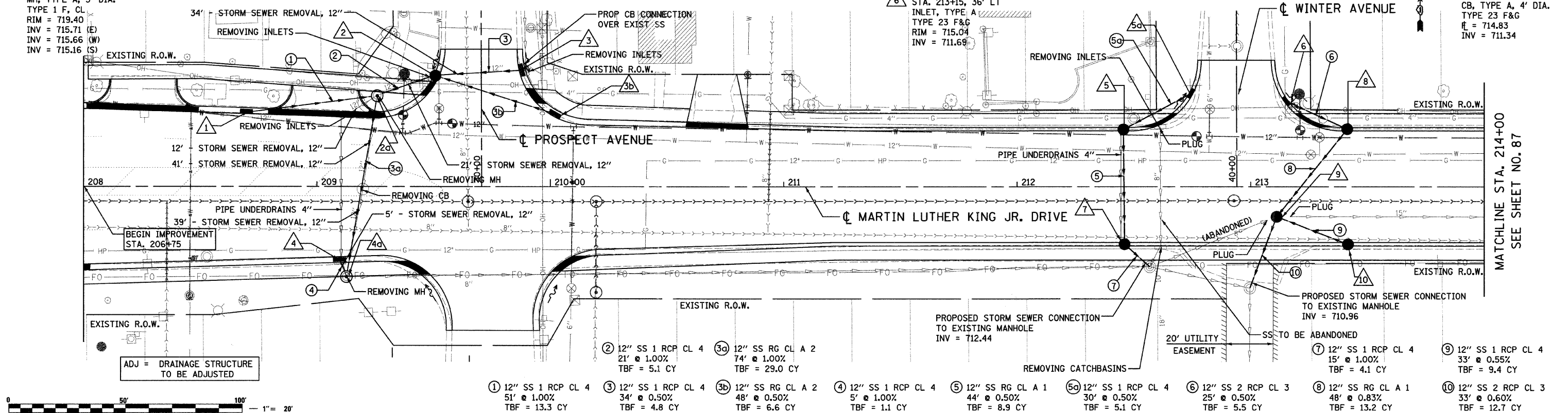


F.A.U. RTE.	SECTION	COUNTY	TOTAL SHEETS	SHEET NO.
1230	03-00159-00-PV	LAKE	262	86
STA. 208+00		TO STA. 214+00		
FED. ROAD DIST. NO. 1		ILLINOIS		FED. AID PROJECT
				CONTRACT: 83828

- 1 STA. 208+70, 32.3' LT INLET, TYPE A TYPE 23 F&G R = 719.42 INV = 716.17
- 2 STA. 209+51, 48' LT CB, TYPE A, 4' DIA. TYPE 23 F&G R = 718.90 INV = 715.92 (E,W)
- 3 STA. 209+87, 50' LT INLET, TYPE A TYPE 23 F&G R = 718.30 INV = 716.09
- 3b STA. 210+01, 30' LT INLET, TYPE A TYPE 23 F&G R = 718.30 INV = 716.16
- 4 STA. 209+10, 31.2' RT INLET, TYPE A TYPE 23 F&G R = 718.90 INV = 716.36
- 4a STA. 209+13, 38' RT MH, TYPE A, 4' DIA. TYPE 1 F. CL RIM = 720.15 INV = 716.31 (NW) INV = 714.42 (N) INV = 714.32 (E) (EXISTING)
- 5 STA. 212+46, 25' LT CB, TYPE A, 4' DIA. TYPE 23 F&G R = 715.87 INV = 712.81
- 5a STA. 212+75, 39' LT INLET, TYPE A TYPE 23 F&G R = 715.62 INV = 712.96
- 7 STA. 212+46, 25' RT CB, TYPE A, 4' DIA. TYPE 23 F&G R = 715.87 INV = 712.59
- 8 STA. 213+42, 25' LT CB, TYPE A, 4' DIA. TYPE 23 F&G R = 714.87 INV = 711.56
- 9 STA. 213+11, 13' RT MH, TYPE A, 4' DIA. TYPE 1 F. CL R = 715.57 INV = 711.16 (NE) INV = 711.16 (SE) INV = 711.16 (SW)
- 10 STA. 213+42, 25' RT CB, TYPE A, 4' DIA. TYPE 23 F&G R = 714.83 INV = 711.34



STATION	EXISTING ELEVATION	PROPOSED ELEVATION	STATION	EXISTING ELEVATION	PROPOSED ELEVATION
208+00	721.08	721.08	211+00	717.40	717.40
208+10	720.88	720.74	211+10	717.47	717.23
208+20	720.64	720.39	211+20	717.31	717.06
208+30	720.39	720.04	211+30	717.15	716.89
208+40	720.13	719.70	211+40	716.98	716.73
208+50	719.63	719.35	211+50	716.81	716.56
208+60	719.12	719.00	212+00	716.58	716.38
208+70	718.61	718.66	212+10	716.35	716.16
208+80	718.22	718.32			
208+90	717.86	718.02			
208+00	717.84	717.77			
209+00	717.83	717.57			
209+10	717.66	717.40			
209+20	717.47	717.23			
209+30	717.31	717.06			
209+40	717.15	716.89			
209+50	716.98	716.73			
209+60	716.81	716.56			
209+70	716.58	716.38			
209+80	716.35	716.16			

REVISIONS	
NAME	DATE

Clorba Group, Inc.
CONSULTING ENGINEERS
5507 North Cumberland Avenue, Suite 402 Chicago, Illinois 60656
Tel. 773.775.4009 Fax 773.775.4014 Email chicago@clorba.com

CITY OF NORTH CHICAGO
MARTIN LUTHER KING JR. DRIVE IMPROVEMENTS
MARTIN LUTHER KING JR. DRIVE
PROPOSED STORM SEWER
PLAN AND PROFILE
STA. 208+00 TO 214+00

SCALE: 1"=20'
DATE: APRIL, 2008
DRAWN BY: KMS
CHECKED BY: MJL

DATE: 7/12/2008
FILENAME: N:\PROJ\05161\Design\Drainage\05161-DRN-02.dgn

PLAN: SURVEYED, PLOTTED, CHECKED, ALIGNED, CADD FILE NAME

PROFILE: SURVEYED, PLOTTED, CHECKED, GRADES SET, STRUCTURE NOTATION, CHKD