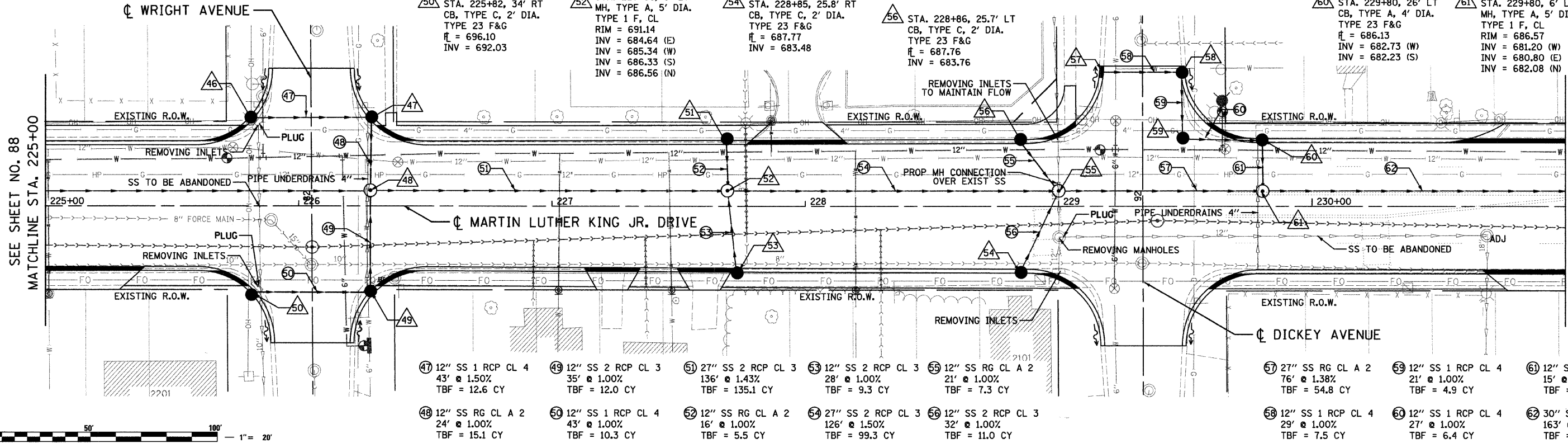
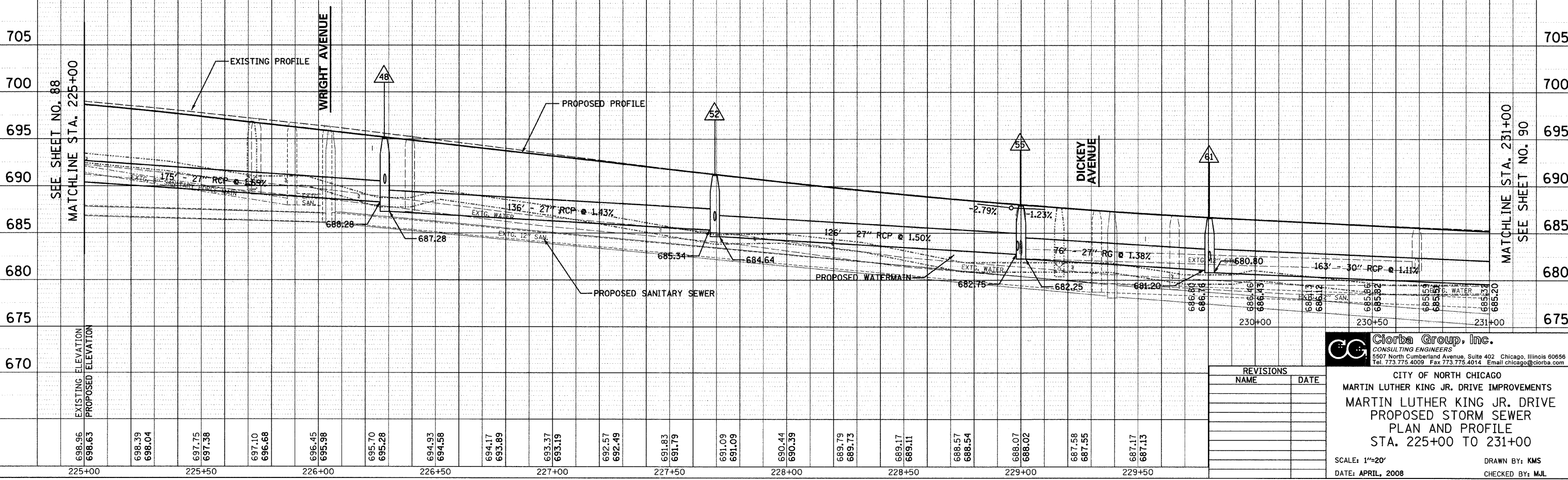


F.A.U. RTE.	SECTION	COUNTY	TOTAL SHEETS	SHEET NO.
1230	03-00159-00-PV	LAKE	262	89
STA. 225+00		TO STA. 231+00		
FED. ROAD DIST. NO. 1 ILLINOIS FED. AID PROJECT				
CONTRACT: 83828				

- 46 STA. 225+81, 34' LT CB, TYPE C, 2' DIA. TYPE 23 F&G RIM = 695.50 INV = 690.97
- 47 STA. 226+29, 34' LT CB, TYPE A, 4' DIA. TYPE 23 F&G RIM = 695.08 INV = 691.80 (W) INV = 690.50 (S)
- 48 STA. 226+29, 6' LT MH, TYPE A, 5' DIA. TYPE 1 F, CL RIM = 695.08 INV = 688.28 (W) INV = 687.28 (E) INV = 690.08 (S) INV = 691.22 (N)
- 49 STA. 226+29, 34' RT CB, TYPE A, 2' DIA. TYPE 23 F&G RIM = 694.82 INV = 691.60 (W) INV = 690.60 (N)
- 50 STA. 225+82, 34' RT CB, TYPE C, 2' DIA. TYPE 23 F&G RIM = 696.10 INV = 692.03
- 51 STA. 227+69, 25.2' LT CB, TYPE C, 2' DIA. TYPE 23 F&G RIM = 690.72 INV = 686.72
- 52 STA. 227+69, 6' LT MH, TYPE A, 5' DIA. TYPE 1 F, CL RIM = 691.14 INV = 684.64 (E) INV = 685.34 (W) INV = 686.33 (S) INV = 686.56 (N)
- 53 STA. 227+73, 25.4' RT CB, TYPE C, 2' DIA. TYPE 23 F&G RIM = 690.60 INV = 686.61
- 54 STA. 228+85, 25.8' RT CB, TYPE C, 2' DIA. TYPE 23 F&G RIM = 687.77 INV = 683.48
- 55 STA. 229+00, 6' LT MH, TYPE A, 6' DIA. TYPE 1 F, CL RIM = 687.90 INV = 682.75 (W) INV = 682.25 (E) INV = 683.17 (SW), 683.55 (NW) INV = 683.30 (EXISTING N)
- 56 STA. 228+86, 25.7' LT CB, TYPE C, 2' DIA. TYPE 23 F&G RIM = 687.76 INV = 683.76
- 57 STA. 229+17, 53' LT INLET, TYPE A TYPE 23 F&G RIM = 687.55 INV = 684.00
- 58 STA. 229+49, 52' LT CB, TYPE A, 4' DIA. TYPE 23 F&G RIM = 687.50 INV = 683.71 (W,S)
- 59 STA. 229+49, 26' LT CB, TYPE A, 4' DIA. TYPE 1 F, CL RIM = 686.91 INV = 683.50 (N) INV = 683.00 (E)
- 60 STA. 229+80, 26' LT CB, TYPE A, 4' DIA. TYPE 23 F&G RIM = 686.13 INV = 682.73 (W) INV = 682.23 (S)
- 61 STA. 229+80, 6' LT MH, TYPE A, 5' DIA. TYPE 1 F, CL RIM = 686.57 INV = 681.20 (W) INV = 680.80 (E) INV = 682.08 (N)



47 12" SS 1 RCP CL 4 43' @ 1.50% TBF = 12.6 CY	49 12" SS 2 RCP CL 3 35' @ 1.00% TBF = 12.0 CY	51 27" SS 2 RCP CL 3 136' @ 1.43% TBF = 135.1 CY	53 12" SS 2 RCP CL 3 28' @ 1.00% TBF = 9.3 CY	55 12" SS RG CL A 2 21' @ 1.00% TBF = 7.3 CY	57 27" SS RG CL A 2 76' @ 1.38% TBF = 54.8 CY	59 12" SS 1 RCP CL 4 21' @ 1.00% TBF = 4.9 CY	61 12" SS RG CL A 2 15' @ 1.00% TBF = 4.6 CY
48 12" SS RG CL A 2 24' @ 1.00% TBF = 15.1 CY	50 12" SS 1 RCP CL 4 43' @ 1.00% TBF = 10.3 CY	52 12" SS RG CL A 2 16' @ 1.00% TBF = 5.5 CY	54 27" SS 2 RCP CL 3 126' @ 1.50% TBF = 99.3 CY	56 12" SS 2 RCP CL 3 32' @ 1.00% TBF = 11.0 CY	58 12" SS 1 RCP CL 4 29' @ 1.00% TBF = 7.5 CY	60 12" SS 1 RCP CL 4 27' @ 1.00% TBF = 6.4 CY	62 30" SS 1 RCP CL 3 163' @ 1.11% TBF = 120.1 CY



PLAN	DATE	BY
SURVEYED		
PLOTTED		
GRADES CHECKED		
ALIGNMENT CHECKED		
STRUCTURE NOTATION CHECKED		
CADD FILE NAME		
NO.		

PROFILE	DATE	BY
SURVEYED		
PLOTTED		
GRADES CHECKED		
STRUCTURE NOTATION CHECKED		
NO.		

DATE: 7/12/08
 DRAWN BY: KMS
 FILENAME: R:\PROJ\516\Design\Drawings\516-DRAW-05.dgn

REVISIONS	
NAME	DATE

Clorba Group, Inc.
 CONSULTING ENGINEERS
 5507 North Cumberland Avenue, Suite 402 Chicago, Illinois 60656
 Tel. 773.775.4009 Fax. 773.775.4014 Email. chicago@clorba.com

CITY OF NORTH CHICAGO
 MARTIN LUTHER KING JR. DRIVE IMPROVEMENTS
 MARTIN LUTHER KING JR. DRIVE
 PROPOSED STORM SEWER
 PLAN AND PROFILE
 STA. 225+00 TO 231+00

SCALE: 1"=20'
 DATE: APRIL, 2008
 DRAWN BY: KMS
 CHECKED BY: MJL