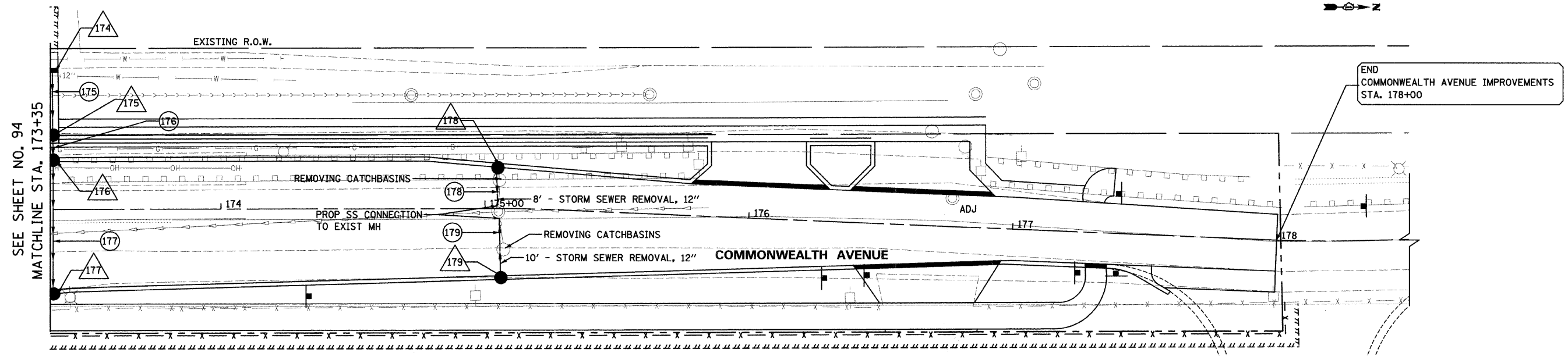
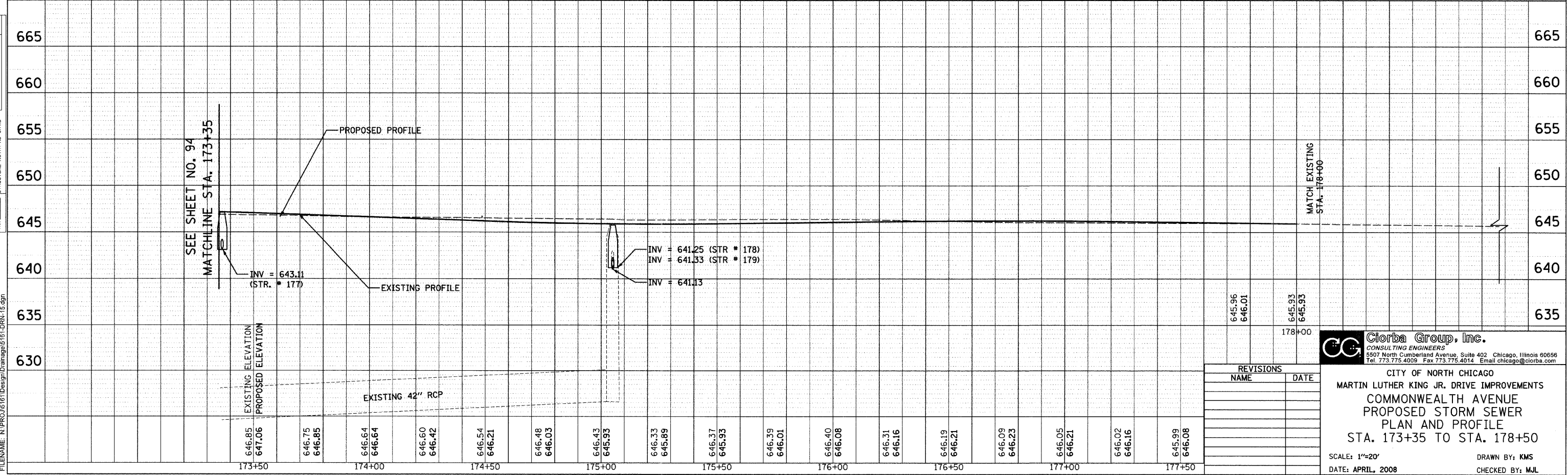


F.A.U. RTE.	SECTION	COUNTY	TOTAL SHEETS	SHEET NO.
1230	03-00159-00-PV	LAKE	262	99
STA. 173+35		TO STA. 178+50		
FED. ROAD DIST. NO. 1		ILLINOIS	FED. AID PROJECT	
CONTRACT: 83828				

- 174 STA. 173+37, 53' LT INLET, TYPE A TYPE 11 F&G \bar{H} = 647 INV = 643.11
- 175 STA. 173+37, 28' LT CB, TYPE A, 4' DIA. TYPE 11 F&G \bar{H} = 647 INV = 642.99
- 176 STA. 173+37, 19' LT CB, TYPE A, 4' DIA. TYPE 23 F&G \bar{H} = 646.77 INV = 642.95
- 177 STA. 173+37, 31' RT CB, TYPE A, 4' DIA. TYPE 23 F&G \bar{H} = 646.75 INV = 642.70
- 178 STA. 175+05, 17' LT CB, TYPE C, 2' DIA. TYPE 11 F&G \bar{H} = 645.53 INV = 641.25
- 179 STA. 175+05, 27' RT CB, TYPE C, 2' DIA. TYPE 11 F&G \bar{H} = 645.33 INV = 641.33



- 175 12" SS 1 RCP CL 4 23' @ 0.50% TBF = 6.5 CY
- 176 12" SS 2 RCP CL 3 8' @ 0.50% TBF = 3.1 CY
- 177 12" SS 1 RCP CL 4 49' @ 0.50% TBF = 13.8 CY
- 178 12" SS 2 RCP CL 3 12' @ 1.00% TBF = 4.1 CY
- 179 12" SS 2 RCP CL 3 20' @ 1.00% TBF = 6.6 CY



REVISIONS	
NAME	DATE

Ciorba Group, Inc.
CONSULTING ENGINEERS
5507 North Cumberland Avenue, Suite 402 Chicago, Illinois 60656
Tel. 773.775.4009 Fax 773.775.4014 Email chicago@ciorba.com

CITY OF NORTH CHICAGO
MARTIN LUTHER KING JR. DRIVE IMPROVEMENTS
COMMONWEALTH AVENUE
PROPOSED STORM SEWER
PLAN AND PROFILE
STA. 173+35 TO STA. 178+50
SCALE: 1"=20'
DATE: APRIL, 2008
DRAWN BY: KMS
CHECKED BY: MJL

PLAN: SURVEYED, PLOTTED, CHECKED, AT 10:00 AM, 4/1/08, FILE NAME: N:\PROJ\05161\Design\Drawings\161-CRM-15.dgn

PROFILE: SURVEYED, PLOTTED, CHECKED, AT 10:00 AM, 4/1/08, FILE NAME: N:\PROJ\05161\Design\Drawings\161-CRM-15.dgn

DATE: 7/12/2008 BY: [Blank]