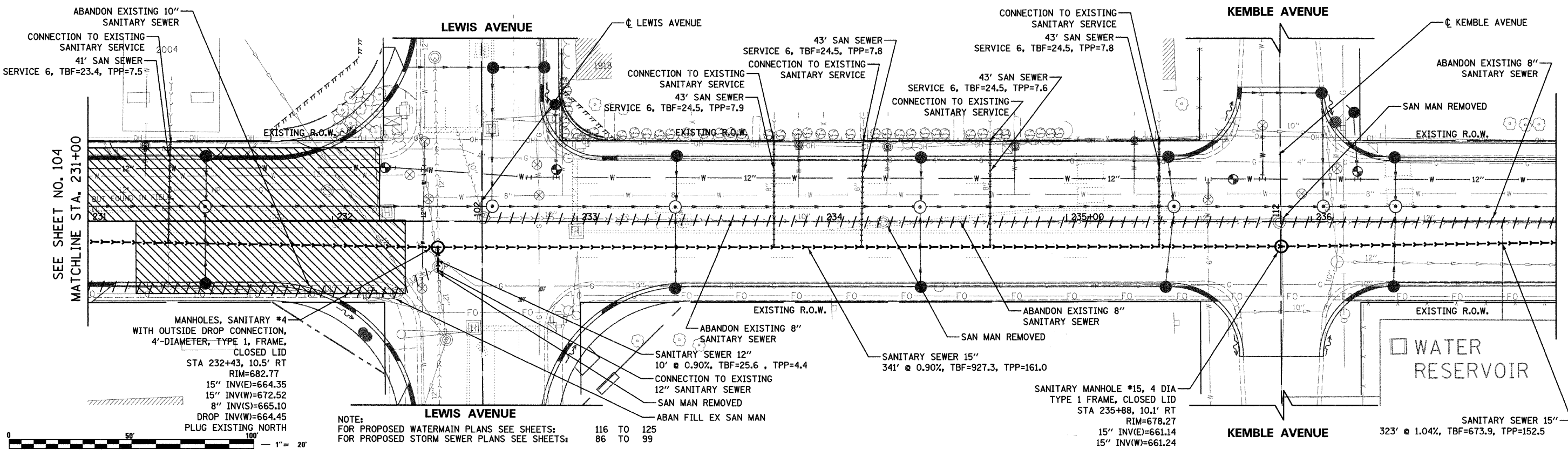
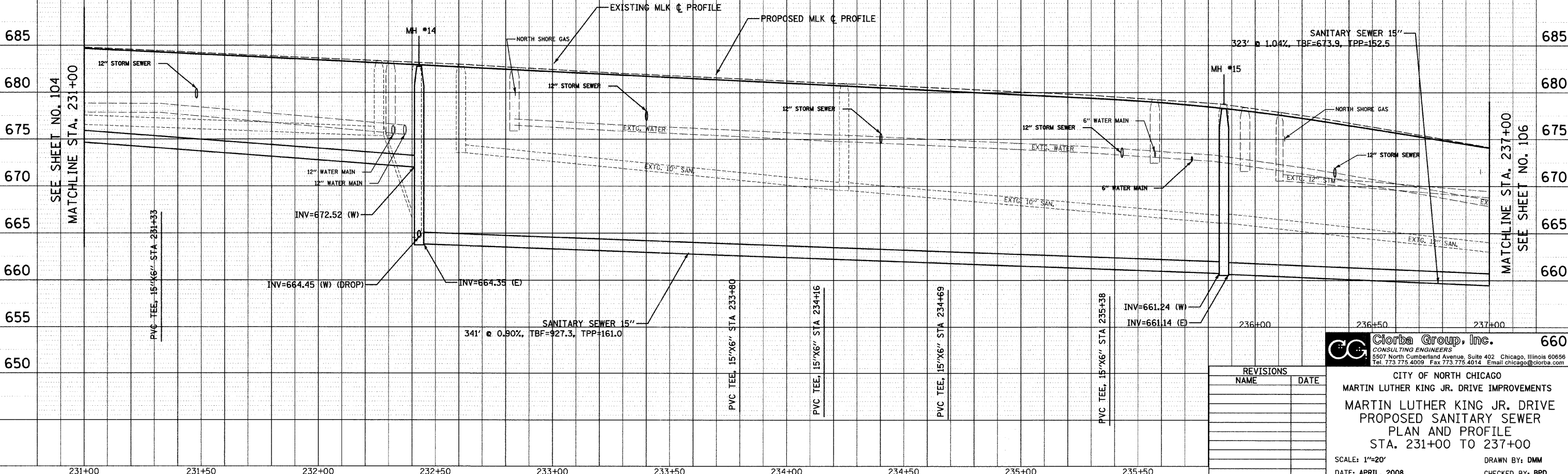
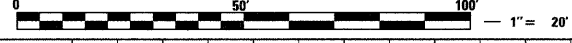


SPECIAL WASTE



MANHOLES, SANITARY #4
WITH OUTSIDE DROP CONNECTION,
4'-DIAMETER, TYPE 1, FRAME,
CLOSED LID
STA 232+43, 10.5' RT
RIM=682.77
15" INV(E)=664.35
15" INV(W)=672.52
8" INV(S)=665.10
DROP INV(W)=664.45
PLUG EXISTING NORTH

NOTE:
FOR PROPOSED WATERMAIN PLANS SEE SHEETS: 116 TO 125
FOR PROPOSED STORM SEWER PLANS SEE SHEETS: 86 TO 99



PLAN	DATE
BY	
CHECKED	
APPROVED	
FILE NAME	

PROFILE	DATE
BY	
CHECKED	
APPROVED	
FILE NAME	

DATE: 7/1/2008
TIME: 11:40 AM
FILENAME: N:\PROJ\161\Design\Sanitary\PSA08.dgn

REVISIONS	
NAME	DATE

Clorba Group, Inc.
CONSULTING ENGINEERS
5507 North Cumberland Avenue, Suite 402 Chicago, Illinois 60656
Tel. 773.775.4009 Fax. 773.775.4014 Email. chicago@clorba.com

CITY OF NORTH CHICAGO
MARTIN LUTHER KING JR. DRIVE IMPROVEMENTS
MARTIN LUTHER KING JR. DRIVE
PROPOSED SANITARY SEWER
PLAN AND PROFILE
STA. 231+00 TO 237+00

SCALE: 1"=20'
DATE: APRIL, 2008

DRAWN BY: DMM
CHECKED BY: BPD