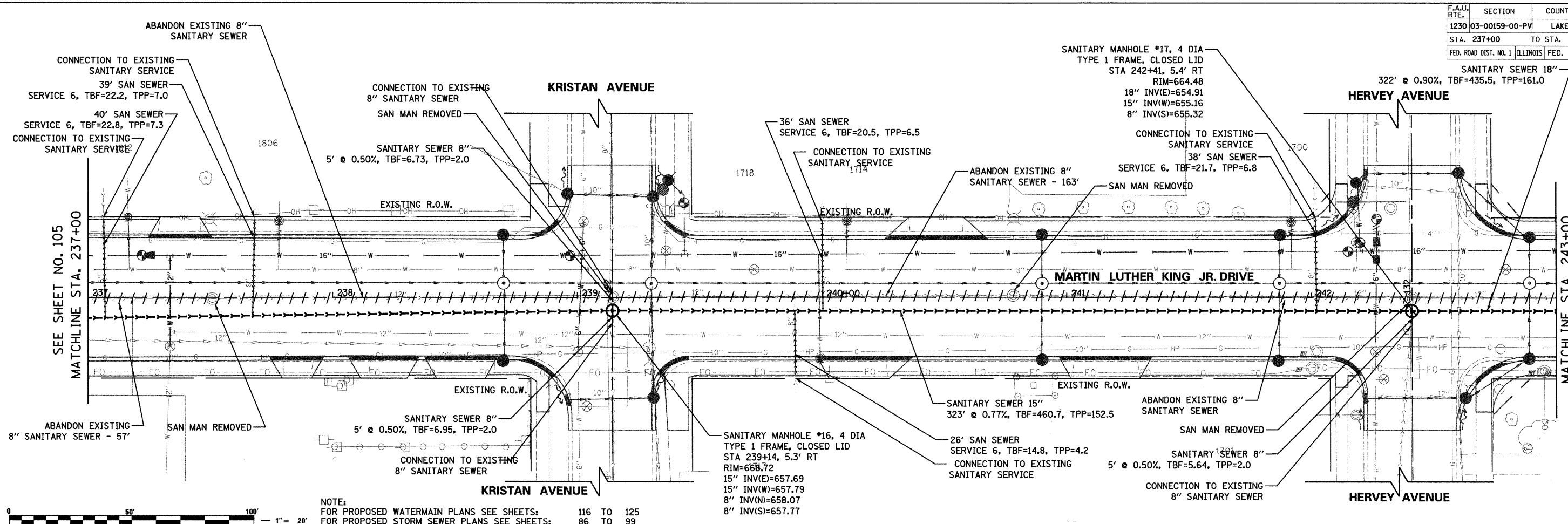
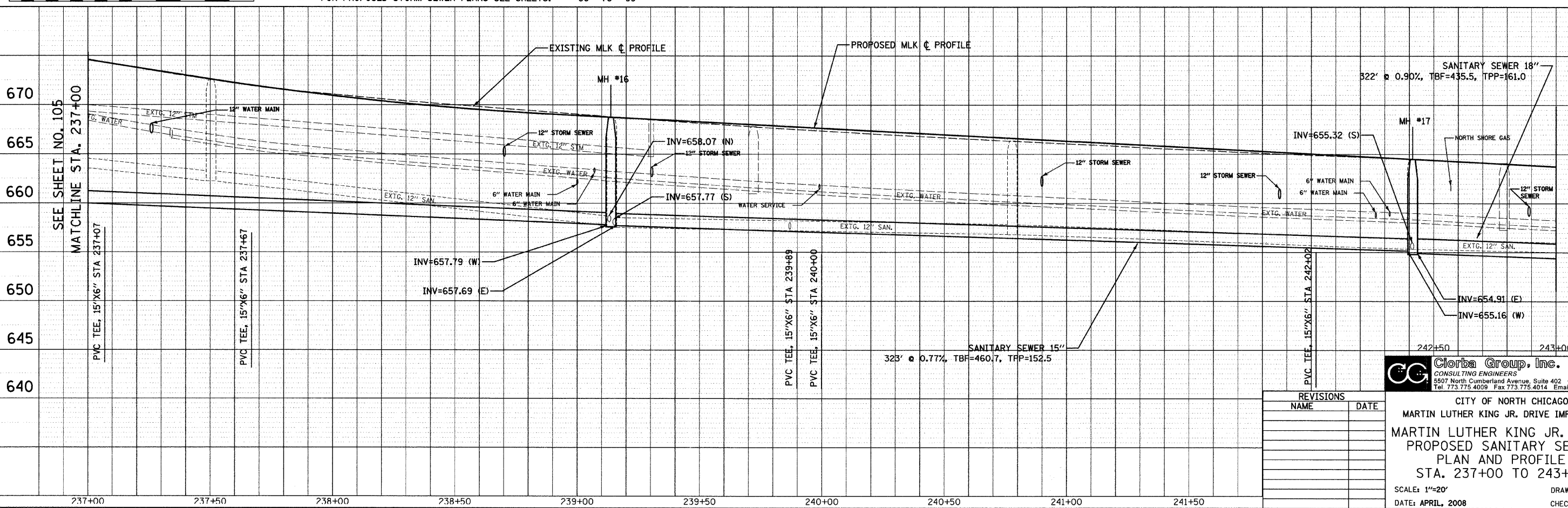


F.A.U. RTE.	SECTION	COUNTY	TOTAL SHEETS	SHEET NO.
1230	03-00159-00-PV	LAKE	262	106
STA. 237+00	TO STA. 243+00			
FED. ROAD DIST. NO. 1	ILLINOIS	FED. AID PROJECT	CONTRACT: 83A28	



NOTE:
 FOR PROPOSED WATERMAIN PLANS SEE SHEETS: 116 TO 125
 FOR PROPOSED STORM SEWER PLANS SEE SHEETS: 86 TO 99



PLAN	DATE
NO.	
BY	
CHECKED	
DATE	

PROFILE	DATE
NO.	
BY	
CHECKED	
DATE	

DATE: 7/12/08
 FILENAME: N:\PROJ\05161\Design\Sanitary\PSA07.dgn

REVISIONS	
NAME	DATE

Clorba Group, Inc.
 CONSULTING ENGINEERS
 5507 North Cumberland Avenue, Suite 402 Chicago, Illinois 60656
 Tel. 773.775.4009 Fax 773.775.4014 Email chicago@clorba.com

CITY OF NORTH CHICAGO
 MARTIN LUTHER KING JR. DRIVE IMPROVEMENTS
 MARTIN LUTHER KING JR. DRIVE
 PROPOSED SANITARY SEWER
 PLAN AND PROFILE
 STA. 237+00 TO 243+00

SCALE: 1"=20'
 DATE: APRIL, 2008
 DRAWN BY: DMM
 CHECKED BY: BPD