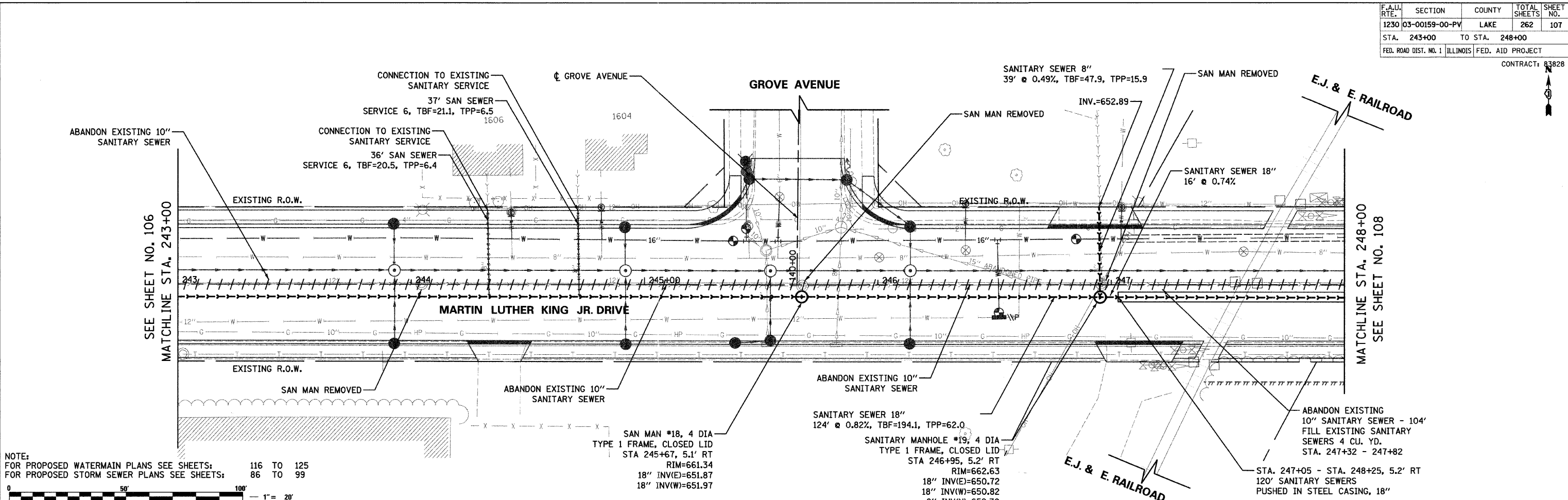
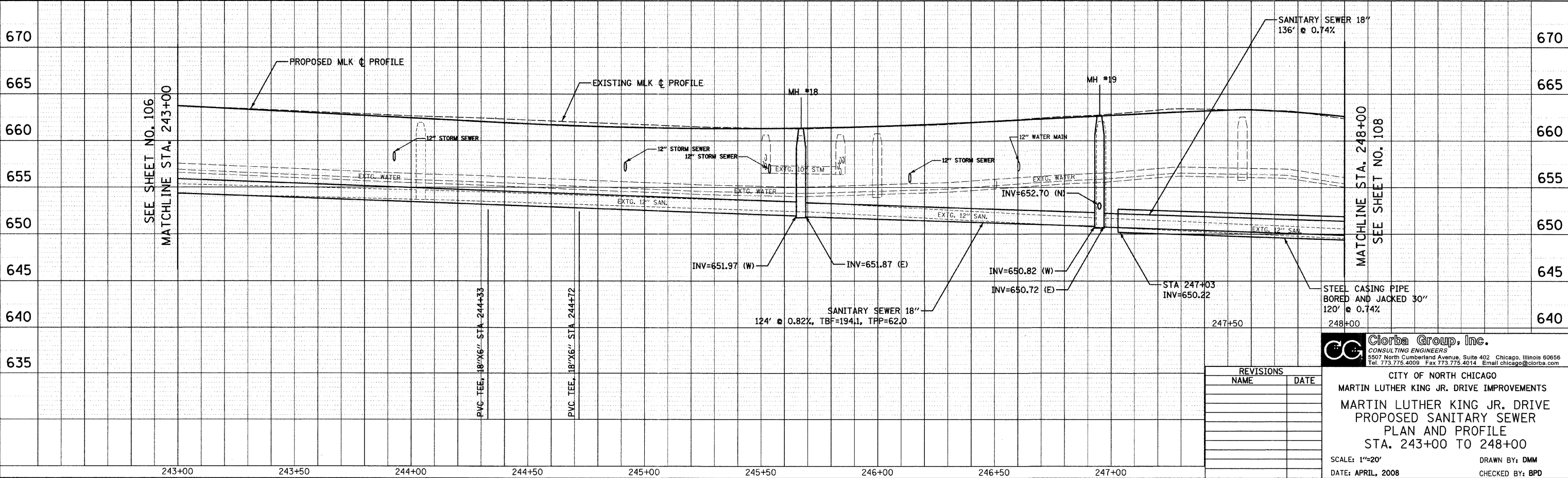


PLAN	NO.	DATE
REVISIONS	BY	DATE
NO.		

PROFILE	NO.	DATE
REVISIONS	BY	DATE
NO.		



NOTE:
 FOR PROPOSED WATERMAIN PLANS SEE SHEETS: 116 TO 125
 FOR PROPOSED STORM SEWER PLANS SEE SHEETS: 86 TO 99



REVISIONS	
NAME	DATE

Clorba Group, Inc.
 CONSULTING ENGINEERS
 5507 North Cumberland Avenue, Suite 402 Chicago, Illinois 60656
 Tel. 773.775.4009 Fax 773.775.4014 Email chicago@clorba.com

CITY OF NORTH CHICAGO
 MARTIN LUTHER KING JR. DRIVE IMPROVEMENTS
 MARTIN LUTHER KING JR. DRIVE
 PROPOSED SANITARY SEWER
 PLAN AND PROFILE
 STA. 243+00 TO 248+00

SCALE: 1"=20'
 DATE: APRIL, 2008

DRAWN BY: DMM
 CHECKED BY: BPD

DATE: 7/1/2008
 TIME: 4:17 AM
 FILENAME: N:\PROJECTS\161\Design\summary\FSA\A08.dgn