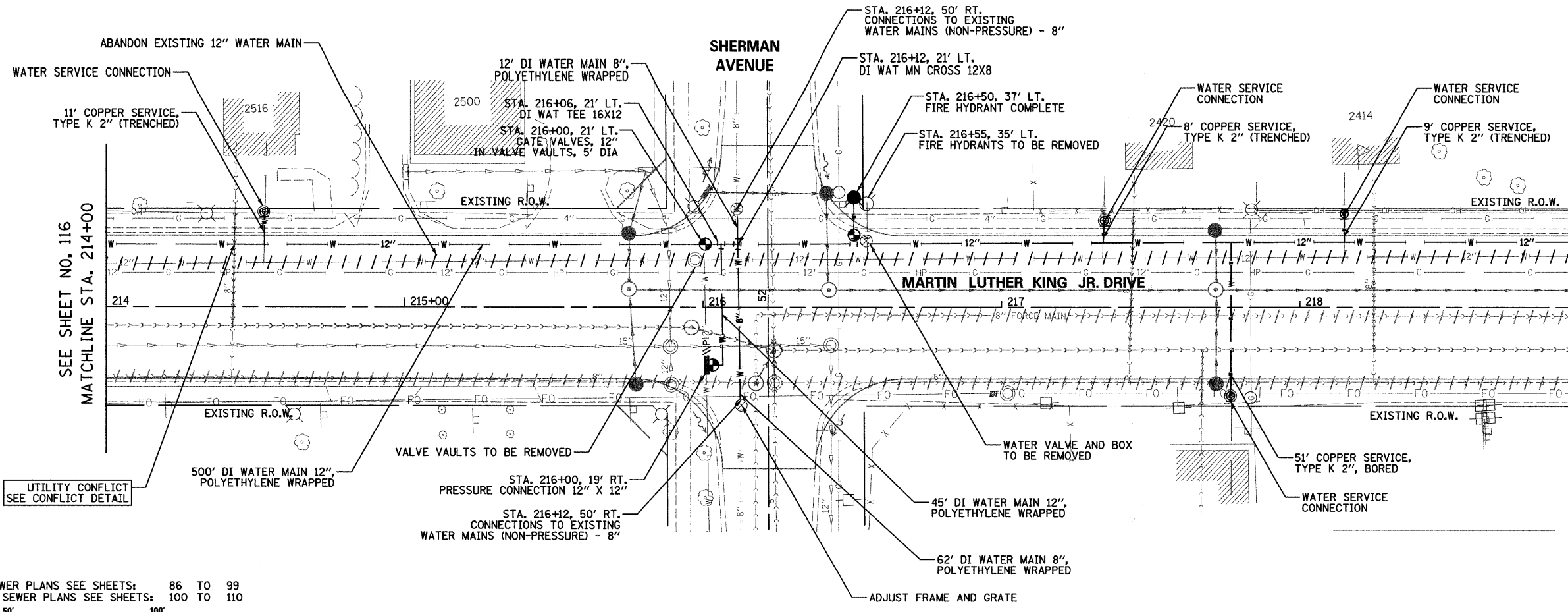


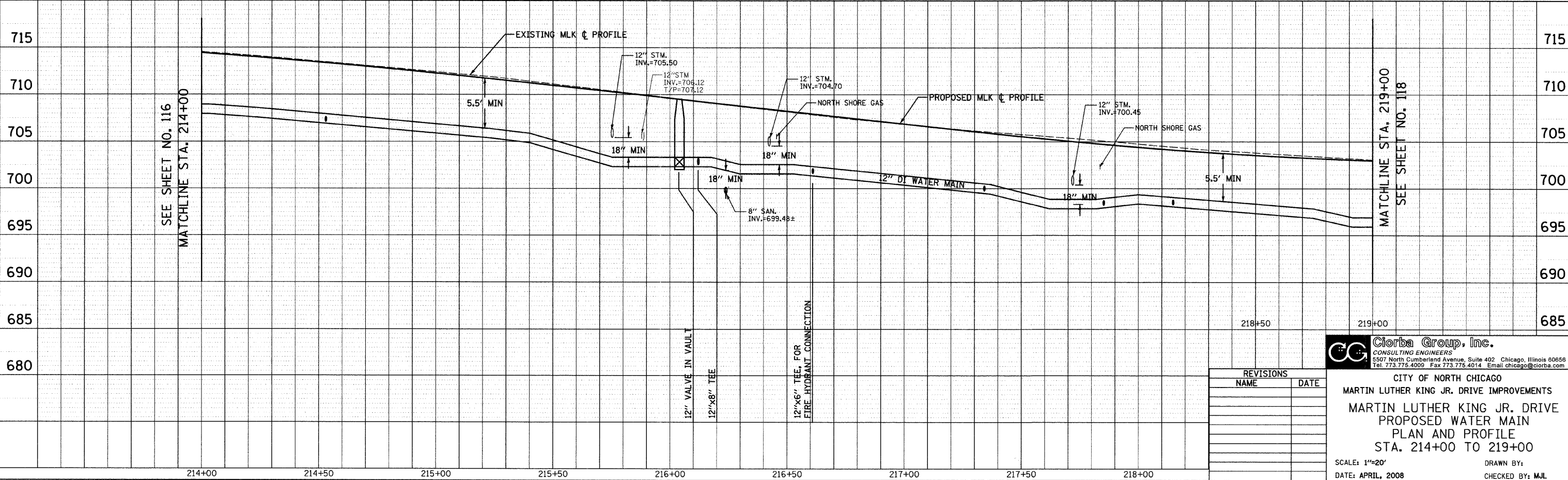
F.A.U. RTE.	SECTION	COUNTY	TOTAL SHEETS	SHEET NO.
1230	03-00159-00-PV	LAKE	262	117
STA. 214+00		TO STA. 219+00		
FED. ROAD DIST. NO. 1 ILLINOIS FED. AID PROJECT				

CONTRACT: 83828



UTILITY CONFLICT  
SEE CONFLICT DETAIL

NOTE:  
FOR PROPOSED STORM SEWER PLANS SEE SHEETS: 86 TO 99  
FOR PROPOSED SANITARY SEWER PLANS SEE SHEETS: 100 TO 110



PLAN	NO.	DATE
NO.		
NO.		
NO.		

PROFILE	NO.	DATE
NO.		
NO.		
NO.		

DATE: 7/12/08  
DRAWN BY: MJL  
FILENAME: N:\PROJECTS\18\Design\water\_main\PIVA103.dgn

REVISIONS	
NAME	DATE

**Ciorba Group, Inc.**  
CONSULTING ENGINEERS  
5507 North Cumberland Avenue, Suite 402 Chicago, Illinois 60656  
Tel. 773.775.4009 Fax 773.775.4014 Email chicago@ciorba.com

CITY OF NORTH CHICAGO  
MARTIN LUTHER KING JR. DRIVE IMPROVEMENTS  
MARTIN LUTHER KING JR. DRIVE  
PROPOSED WATER MAIN  
PLAN AND PROFILE  
STA. 214+00 TO 219+00

SCALE: 1"=20'  
DATE: APRIL, 2008

DRAWN BY:  
CHECKED BY: MJL