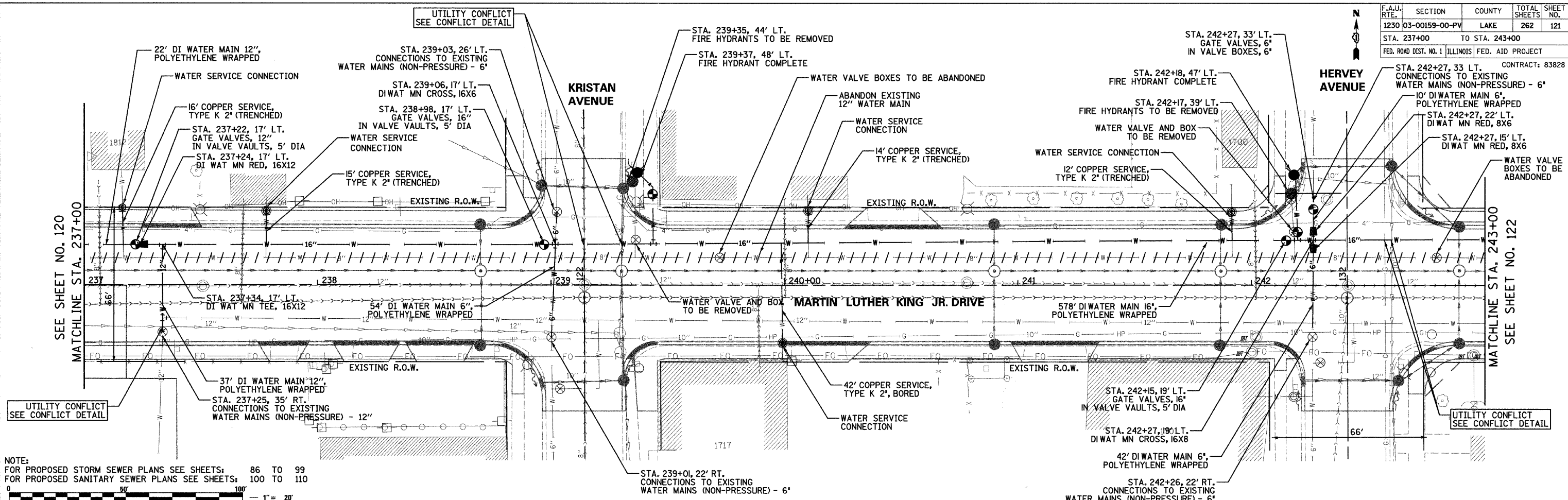
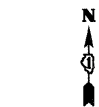


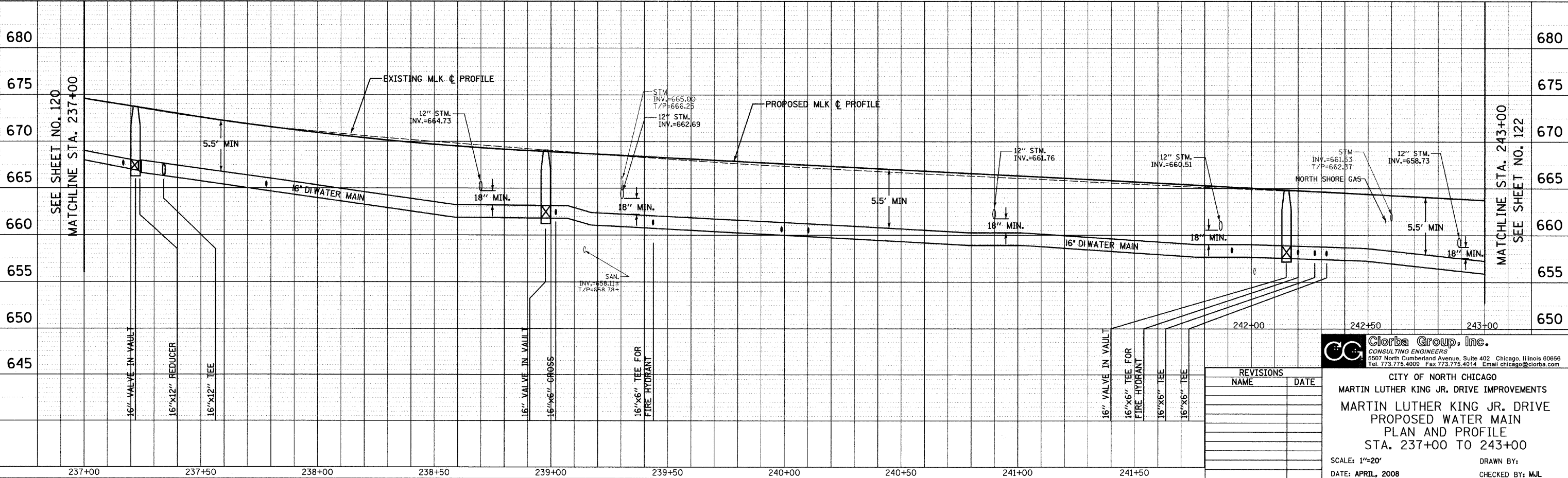
F.A.U. RTE.	SECTION	COUNTY	TOTAL SHEETS	SHEET NO.
1230 03-00159-00-PV	LAKE	262	121	

STA. 237+00 TO STA. 243+00
 FED. ROAD DIST. NO. 1 ILLINOIS FED. AID PROJECT

CONTRACT: 83828



NOTE:
 FOR PROPOSED STORM SEWER PLANS SEE SHEETS: 86 TO 99
 FOR PROPOSED SANITARY SEWER PLANS SEE SHEETS: 100 TO 110



DATE	BY
DATE	BY
DATE	BY

DATE	BY
DATE	BY
DATE	BY

DATE: 7/12/2008
 FILENAME: N:\PROJECTS\151\Design\water main\151\107.dgn

REVISIONS	
NAME	DATE

Clorba Group, Inc.
 CONSULTING ENGINEERS
 5507 North Cumberland Avenue, Suite 402 Chicago, Illinois 60656
 Tel. 773.775.4009 Fax 773.775.4014 Email chicago@clorba.com

CITY OF NORTH CHICAGO
 MARTIN LUTHER KING JR. DRIVE IMPROVEMENTS
 MARTIN LUTHER KING JR. DRIVE
 PROPOSED WATER MAIN
 PLAN AND PROFILE
 STA. 237+00 TO 243+00

SCALE: 1"=20'
 DATE: APRIL, 2008
 DRAWN BY:
 CHECKED BY: MJL