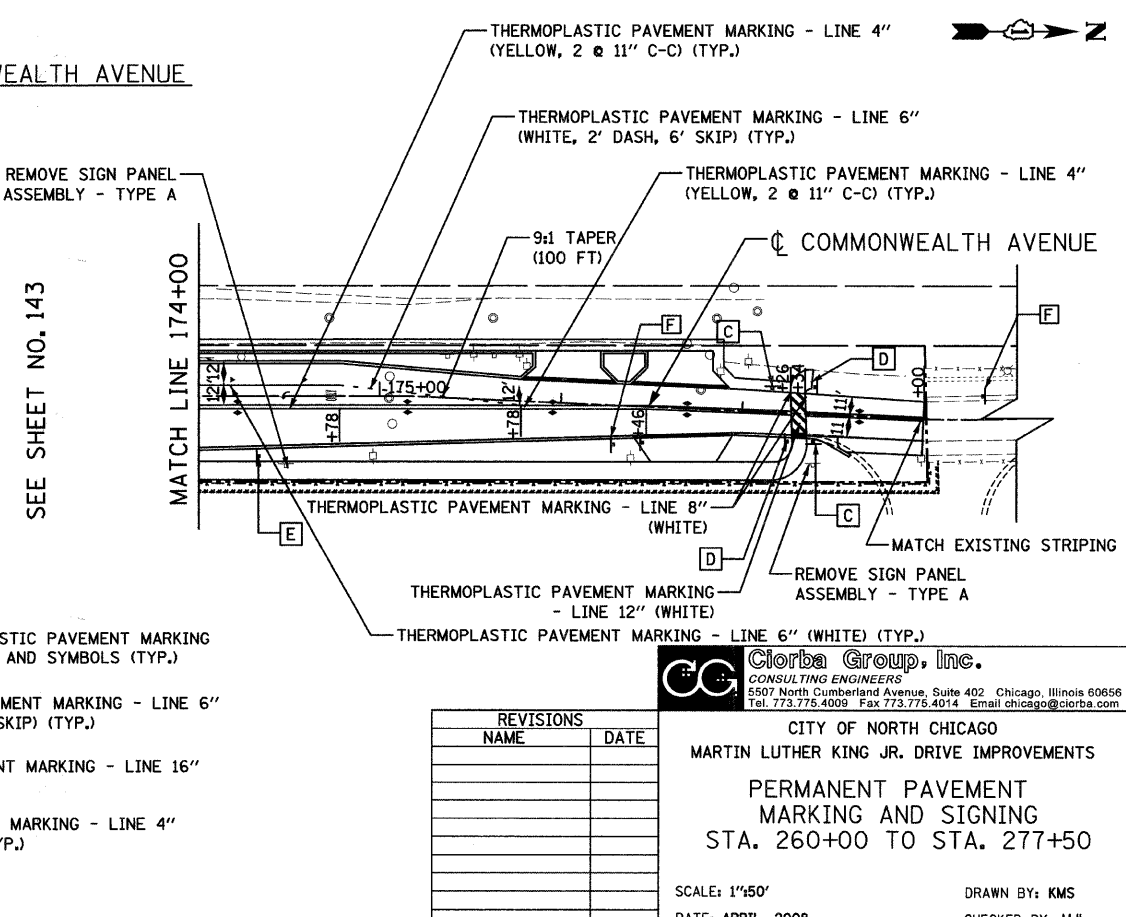
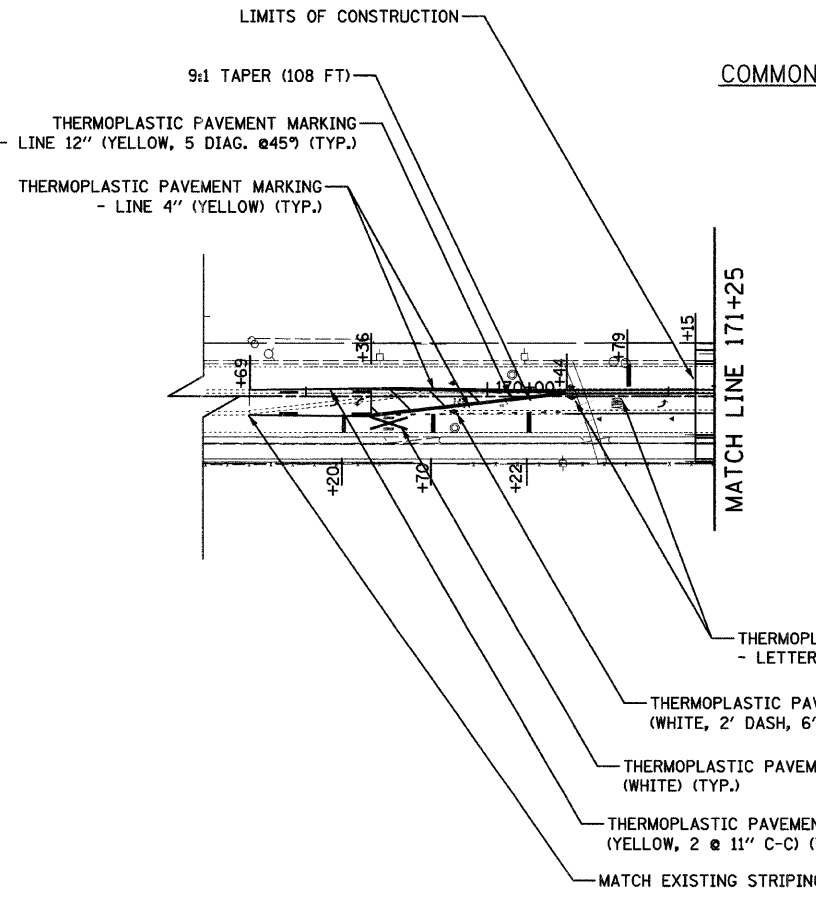
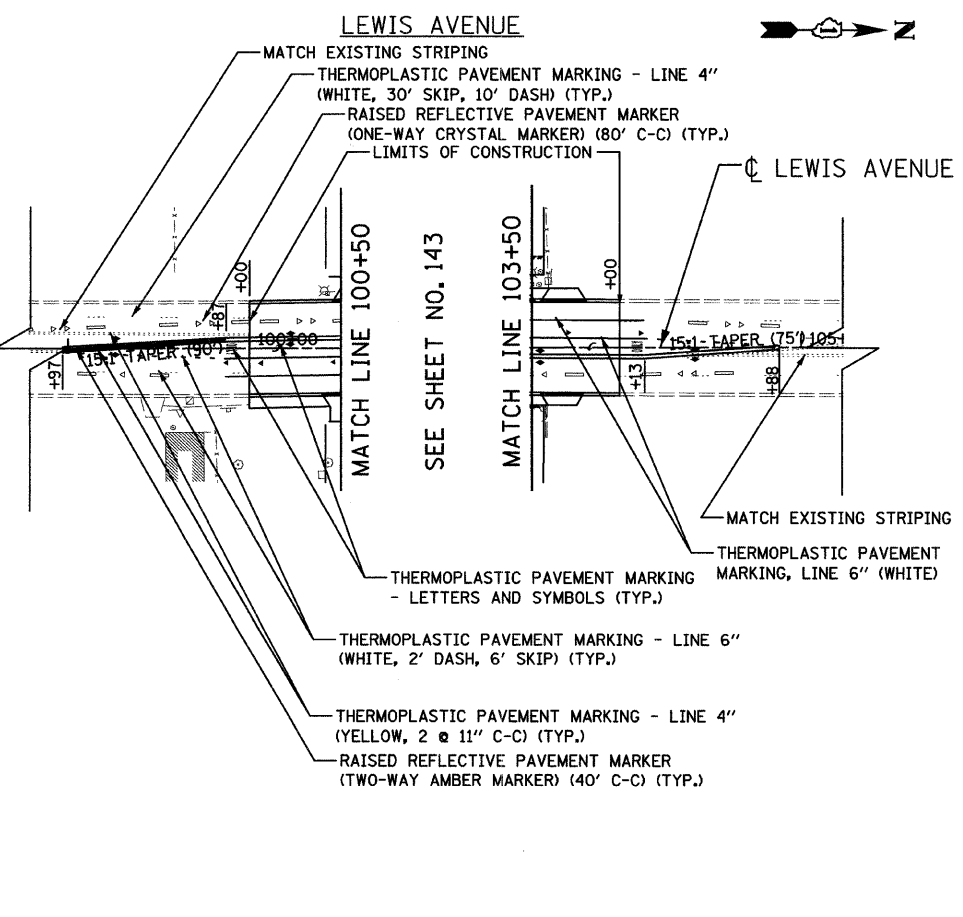
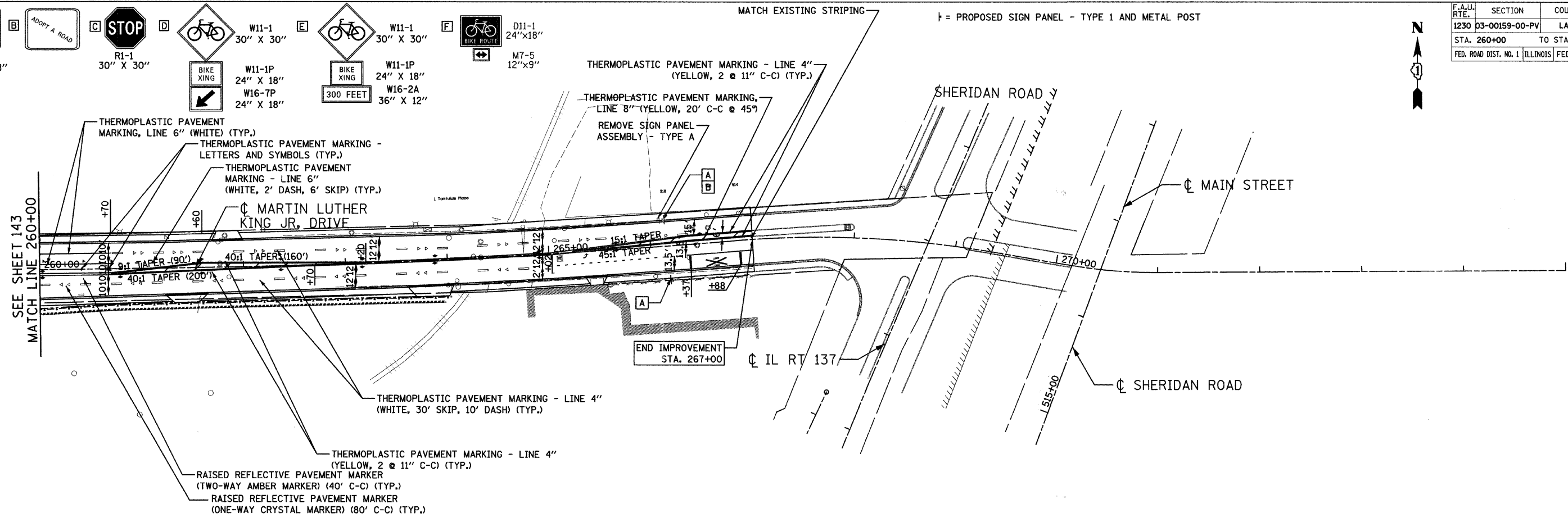
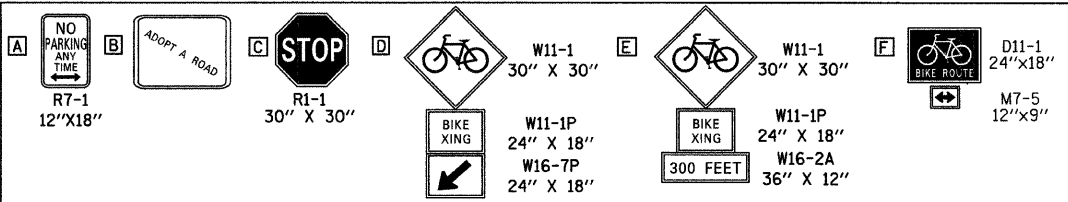


F.A.U. RTE.	SECTION	COUNTY	TOTAL SHEETS	SHEET NO.
1230	03-00159-00-PV	LAKE	262	144
STA. 260+00		TO STA. 277+50		
FED. ROAD DIST. NO. 1		ILLINOIS FED. AID PROJECT		CONTRACT# 83828



REVISIONS	
NAME	DATE

Clorba Group, Inc.
CONSULTING ENGINEERS
5507 North Cumberland Avenue, Suite 402 Chicago, Illinois 60656
Tel. 773.775.4009 Fax 773.775.4014 Email: chicago@clorba.com

CITY OF NORTH CHICAGO
MARTIN LUTHER KING JR. DRIVE IMPROVEMENTS
PERMANENT PAVEMENT MARKING AND SIGNING
STA. 260+00 TO STA. 277+50

SCALE: 1"=50'
DATE: APRIL, 2008

DRAWN BY: KMS
CHECKED BY: MJL

DATE: 7/1/2008
TIME: 8:15:31 AM
FILENAME: N:\PROJ\161\Design\Stripping\161-S&S\03.dgn