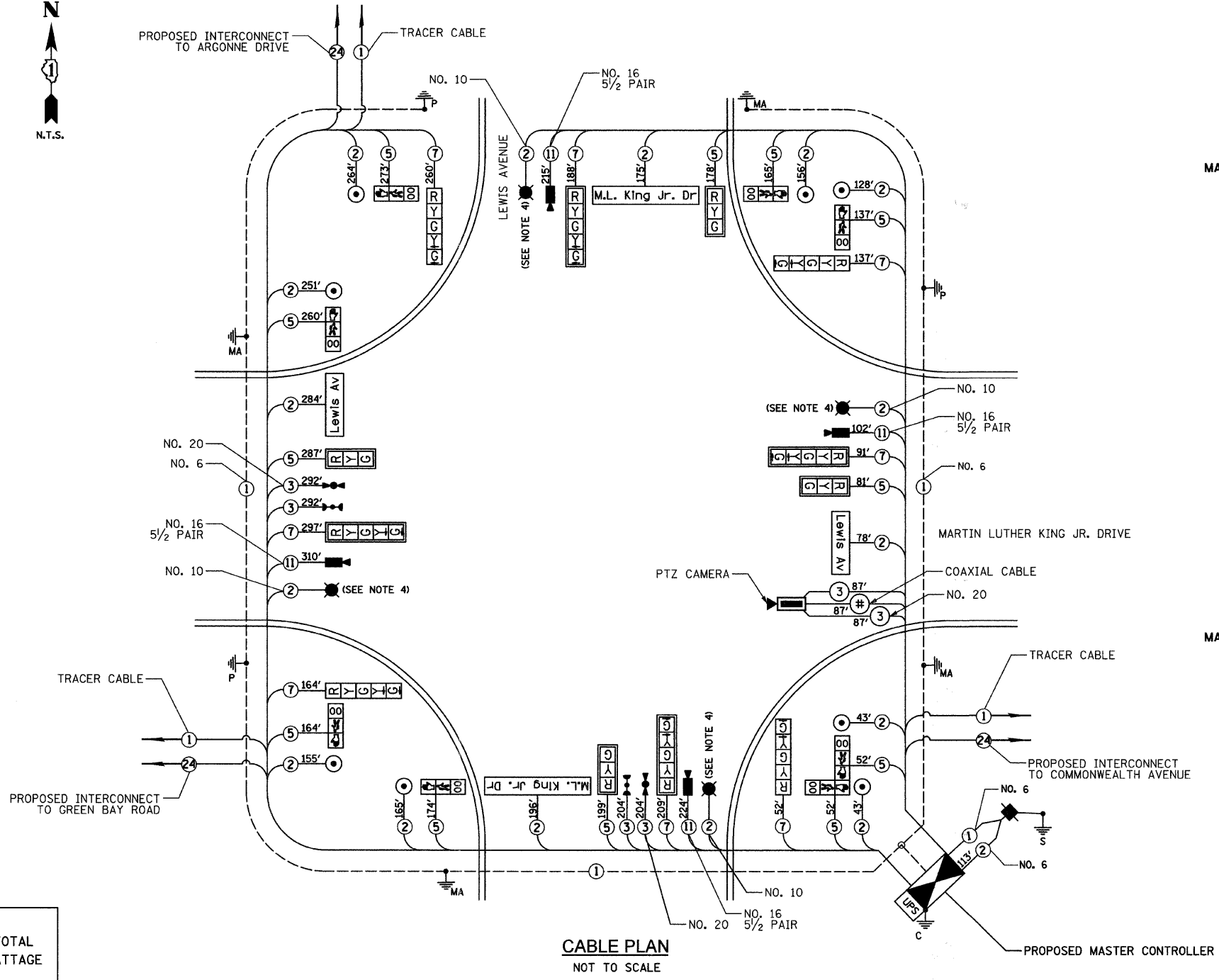


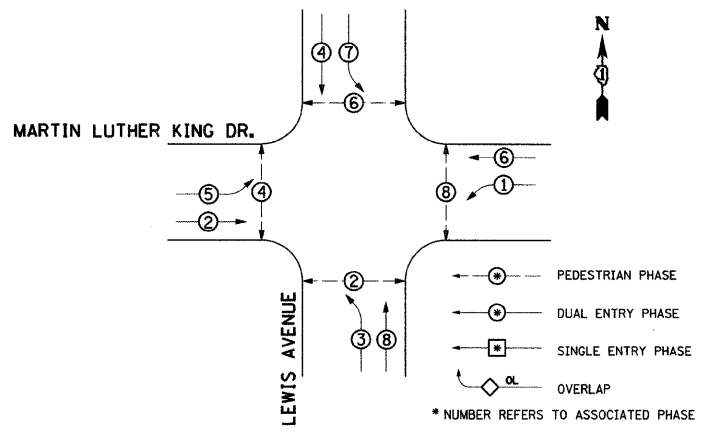
CABLE PLAN LEGEND

- | | |
|--|--|
| | 8" (200mm) TRAFFIC SIGNAL SECTION |
| | 12" (300mm) TRAFFIC SIGNAL SECTION |
| | 12" (300mm) PEDESTRIAN SIGNAL SECTION |
| | 12" (300mm) PEDESTRIAN SIGNAL SECTION WITH COUNTDOWN TIMER |
| | CONTROLLER CABINET (NTCIP COMPATIBLE) |
| | SERVICE INSTALLATION |
| | TELEPHONE CONNECTION |
| | MAGNETIC DETECTOR |
| | EMERGENCY VEHICLE LIGHT DETECTOR |
| | CONFIRMATION BEACON |
| | PUSHBUTTON DETECTOR |
| | VEHICLE DETECTOR, INDUCTION LOOP |
| | MICROWAVE VEHICLE SENSOR |
| | SIGNAL FACE WITH BACKPLATE, "P" INDICATES PROGRAMMED HEAD |
| | RAILROAD CONTROL CABINET |
| | ILLUMINATED SIGN "NO LEFT TURN" |
| | ILLUMINATED SIGN "NO RIGHT TURN" |
| | GROUND ROD AT HANDHOLE (H), DOUBLE HANDHOLE (H), OR CONTROLLER (C) |
| | GROUND ROD AT POST (P), OR MAST ARM POLE (MA) |
| | GROUND ROD AT ELECTRIC SERVICE INSTALLATION |
| | GROUND CABLE IN CONDUIT NO. 6 SOLID COPPER (GREEN) |
| | FIBER OPTIC CABLE IN CONDUIT NO. 62.5/125 MM12F SM12F |
| | BELDEN 8281 RG-59U COAXIAL CABLE |
| | PROPOSED IMAGE SENSOR |
| | PROPOSED STREET LIGHT LUMINAIRE |
| | PROPOSED DOME PAN/TILT/ZOOM (PTZ) CAMERA |
| | 12" (300mm) PEDESTRIAN SIGNAL SECTION WITH COUNTDOWN TIMER |
| | PROPOSED BACKUP BATTERY |
| | PROPOSED L.E.D. ILLUMINATED STREET NAME SIGN |
| | PROPOSED TELEPHONE CONNECTION |



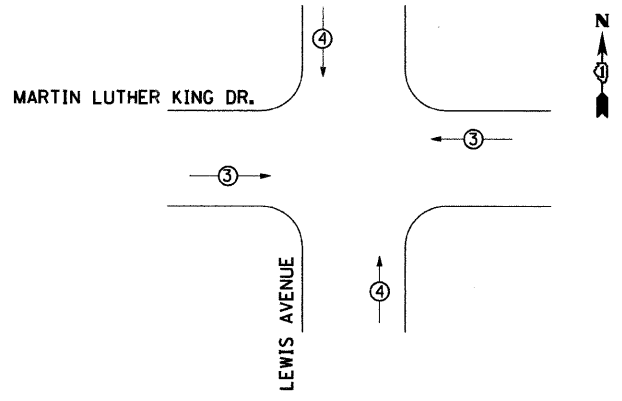
CABLE PLAN
NOT TO SCALE

CONTROLLER SEQUENCE



PROPOSED PHASE DESIGNATION DIAGRAM

PROPOSED EMERGENCY VEHICLE PREEMPTION SEQUENCE



PROPOSED EMERGENCY VEHICLE PREEMPTOR		
EMERGENCY VEHICLE PREEMPTOR	3	4
MOVEMENT	←	↑

- NOTES:**
- VIDEO FROM LEWIS AVENUE TO BE TRANSMITTED ALONG FIBER TO ISDN TELEPHONE CONNECTION AT ARGONNE DRIVE.
 - THE TRAFFIC SIGNAL CONTROLLER EQUIPMENT FOR THIS PROJECT SHALL BE "ECONOLITE" TO MATCH THE EXISTING ADJACENT SYSTEM.
 - THE END OF THE TRACER CABLE SHALL BE CONTINUOUS AND EXTEND INTO THE CONTROLLER CABINET.
 - LIGHTING CONDUIT AND LUMINAIRE QUANTITIES TO BE INCLUDED IN LIGHTING QUANTITIES.

I.D.O.T TRAFFIC SIGNAL INSTALLATION ELECTRICAL SERVICE REQUIREMENTS					TOTAL WATTAGE
TYPE	NO. LAMPS	WATTAGE		%OPERATION	
SIGNAL (RED)	12	10	0.50	60	
	(YELLOW)	12	19	0.25	57
	(GREEN)	12	11	0.25	33
ARROW	8	9	0.10	7.2	
PED. SIGNAL	8	9	1.00	72	
CONTROLLER	1	100	1.00	100	
VIDEO SYSTEMS	1	150	1.00	150	
ILLUM. ST. SIGN	4	60	0.50	120	
LUMINAIRE	4	250	0.50	500	
BATTERY BACK UP	1	25	1.00	25	
ENERGY COSTS TO: LAKE COUNTY DIVISION OF TRANSPORTATION 600 WEST WINCHESTER ROAD LIBERTYVILLE, IL 60048				TOTAL =	1,124.2
ENERGY SUPPLY CONTACT: MS. TERRI BLECK, PHONE: 1-847-816-5239 COMPANY: COM ED					

FOUNDATION (DEPTH)	FT. (m)	CABLE SLACK	FT. (m)	VERTICAL	FT. (m)
TYPE A - POST	4 (1.2)	HANDHOLE	6.5 (2.0)	ALL FOUNDATIONS	3.5 (1.0)
D - CONTROLLER	4 (1.2)	DOUBLE HANDHOLE	13 (4.0)	MAST ARM (L) POLE	20'-H-2'=(6m+L-0.6m)=
E - M. ARM POLE		SIGNAL POST	2 (1.0)	BRACKET MOUNTED	13 (4.0)
24" (600mm)	10 (3.0)	CONTROLLER CAB.	1 (0.5)	PED. PUSHBUTTON	4 (1.2)
30" (750mm)	15 (4.6)	FIBER OPTIC	13 (4.0)	ELECTRIC SERVICE	13.5 (4.1)
		ELECTRIC SERVICE	1 (0.5)	SERVICE TO GROUND	13.5 (4.1)
		GROUND CABLE	1 (0.5)	POST MOUNTED	6 (1.8)

REVISIONS	
NAME	DATE

Clorba Group, Inc.
CONSULTING ENGINEERS
5507 North Cumberland Avenue, Suite 402 Chicago, Illinois 60656
Tel. 773.775.4009 Fax. 773.775.4014 Email. chicago@clorba.com

CITY OF NORTH CHICAGO
MARTIN LUTHER KING JR. DRIVE IMPROVEMENTS

TRAFFIC SIGNAL CABLE PLAN
MARTIN LUTHER KING JR. DRIVE
AND LEWIS AVENUE

SCALE: N.T.S. DRAWN BY: KDM
DATE: APRIL, 2008 CHECKED BY: MJL

DATE: 7/1/08
TIME: 8:34:33 AM
FILENAME: N:\PROJECTS\161\Design\Signal\Plan_Sheets\161-09-Lewis-rt-cable-plan.dgn