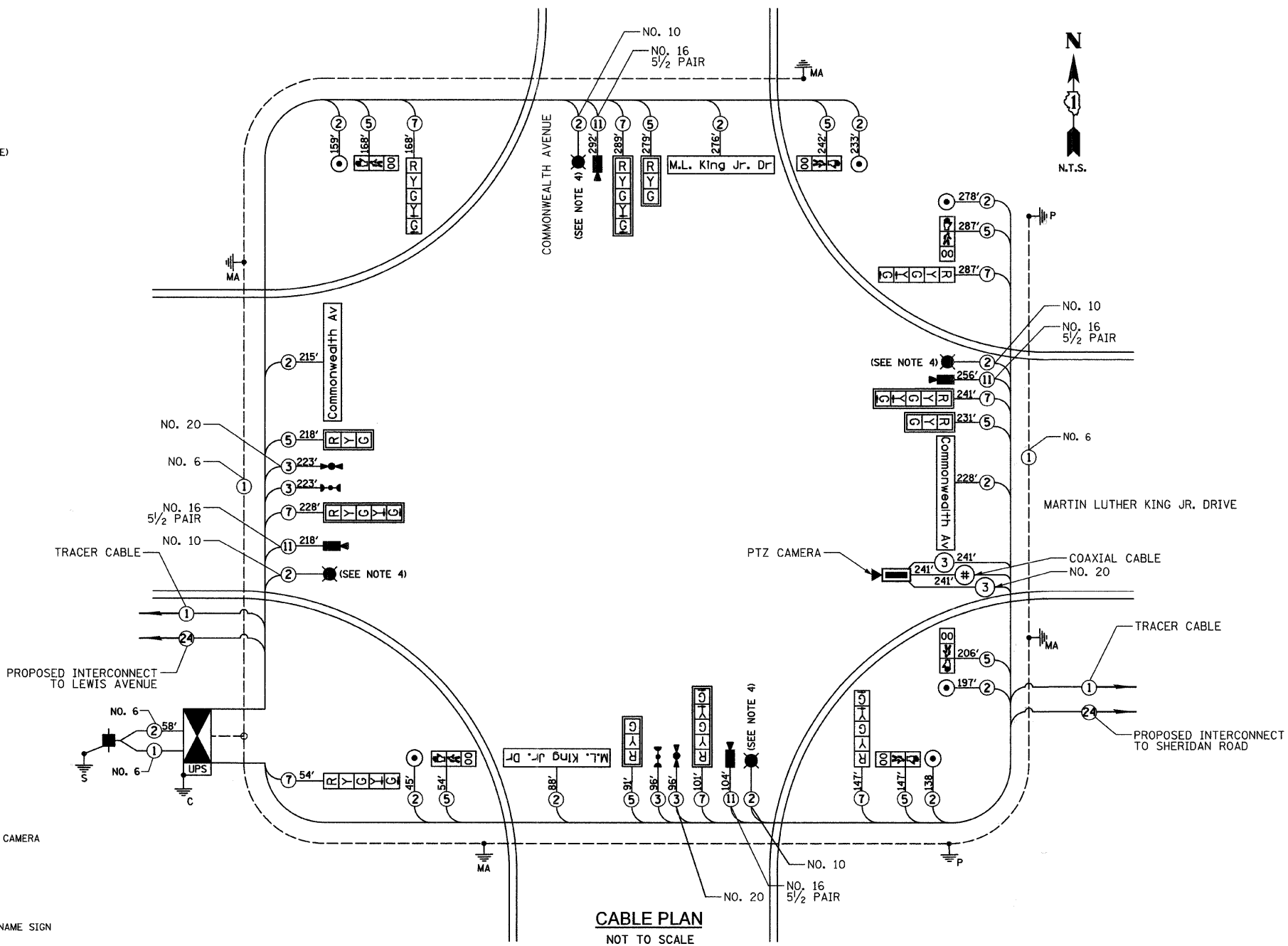
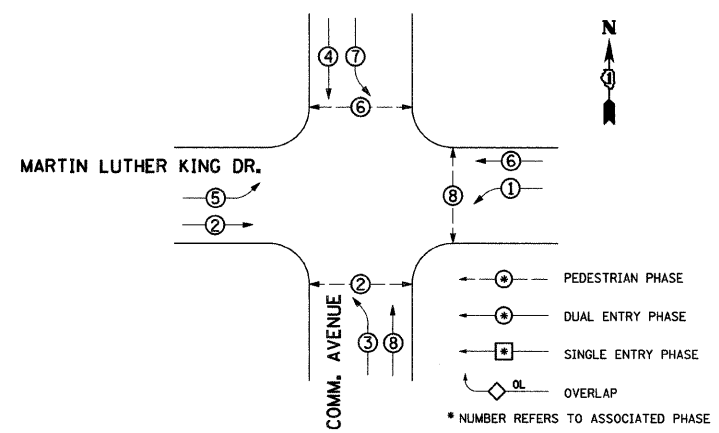


CABLE PLAN LEGEND

- | | |
|--|---|
| | 8" (200mm) TRAFFIC SIGNAL SECTION |
| | 12" (300mm) TRAFFIC SIGNAL SECTION |
| | 12" (300mm) PEDESTRIAN SIGNAL SECTION |
| | CONTROLLER CABINET (NTCIP COMPATIBLE) |
| | SERVICE INSTALLATION |
| | TELEPHONE CONNECTION |
| | MAGNETIC DETECTOR |
| | EMERGENCY VEHICLE LIGHT DETECTOR |
| | CONFIRMATION BEACON |
| | PUSHBUTTON DETECTOR |
| | VEHICLE DETECTOR, INDUCTION LOOP |
| | MICROWAVE VEHICLE SENSOR |
| | SIGNAL FACE WITH BACKPLATE, "P" INDICATES PROGRAMMED HEAD |
| | RAILROAD CONTROL CABINET |
| | ILLUMINATED SIGN "NO LEFT TURN" |
| | ILLUMINATED SIGN "NO RIGHT TURN" |
| | GROUND ROD AT HANDHOLE (H), DOUBLE HANDHOLE (H), OR CONTROLLER (C). |
| | GROUND ROD AT POST (P), OR MAST ARM POLE (MA). |
| | GROUND ROD AT ELECTRIC SERVICE INSTALLATION |
| | GROUND CABLE IN CONDUIT NO. 6 SOLID COPPER (GREEN) |
| | FIBER OPTIC CABLE IN CONDUIT NO. 62.5/125 MM12F SM12F |
| | BELDEN 8281 RG-59U COAXIAL CABLE |
| | PROPOSED IMAGE SENSOR |
| | PROPOSED STREET LIGHT LUMINAIRE |
| | PROPOSED DOME PAN/TILT/ZOOM (PTZ) CAMERA |
| | 12" (300mm) PEDESTRIAN SIGNAL SECTION WITH COUNTDOWN TIMER |
| | PROPOSED BACKUP BATTERY |
| | PROPOSED TELEPHONE CONNECTION |

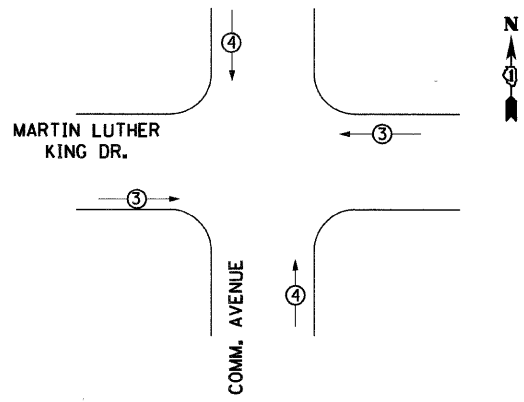


CONTROLLER SEQUENCE



PROPOSED PHASE DESIGNATION DIAGRAM

PROPOSED EMERGENCY VEHICLE PREEMPTION SEQUENCE



PROPOSED EMERGENCY VEHICLE PREEMPTOR		
EMERGENCY VEHICLE PREEMPTOR	3	4
MOVEMENT	←	↑

TRAFFIC SIGNAL INSTALLATION ELECTRICAL SERVICE REQUIREMENTS					
TYPE	NO. LAMPS	WATTAGE		%OPERATION	TOTAL WATTAGE
		INCAND.	LED		
SIGNAL (RED)	12		10	0.50	60
(YELLOW)	12		19	0.25	57
(GREEN)	12		11	0.25	33
ARROW	8		9	0.10	7.2
PED. SIGNAL	6		9	1.00	54
CONTROLLER	1		100	1.00	100
VIDEO SYSTEMS	1		150	1.00	150
ILLUM. ST. SIGN	4		60	0.50	120
LUMINAIRE	4		250	0.50	500
BATTERY BACKUP	1		25	1.00	25
ENERGY COSTS TO: LAKE COUNTY DIVISION OF TRANSPORTATION 600 WEST WINCHESTER ROAD LIBERTYVILLE, IL 60048					TOTAL = 1,106.2
ENERGY SUPPLY CONTACT: MS. TERRI BLECK. PHONE: 1-847-816-5239 COMPANY: COM ED					

FOUNDATION (DEPTH)	FT. (m)	CABLE SLACK	FT. (m)	VERTICAL	FT. (m)
TYPE A - POST	4 (1.2)	HANDHOLE	6.5 (2.0)	ALL FOUNDATIONS	3.5 (1.0)
D - CONTROLLER	4 (1.2)	DOUBLE HANDHOLE	13 (4.0)	MAST ARM (L) POLE	20'-L-2=
E - M. ARM POLE		SIGNAL POST	2 (1.0)	(6m+L-0.6m)=	
24" (600mm)	10 (3.0)	CONTROLLER CAB.	1 (0.5)	BRACKET MOUNTED	13 (4.0)
30" (750mm)	15 (4.6)	FIBER OPTIC	13 (4.0)	PED. PUSHBUTTON	4 (1.2)
		ELECTRIC SERVICE	1 (0.5)	ELECTRIC SERVICE	13.5 (4.1)
		GROUND CABLE	1 (0.5)	SERVICE TO GROUND	13.5 (4.1)
				POST MOUNTED	6 (1.8)

- NOTES:**
- VIDEO FROM LEWIS AVENUE TO BE TRANSMITTED ALONG FIBER TO ISDN TELEPHONE CONNECTION AT ARGONNE DRIVE.
 - THE TRAFFIC SIGNAL CONTROLLER EQUIPMENT FOR THIS PROJECT SHALL BE "ECONOLITE" TO MATCH THE EXISTING ADJACENT SYSTEM.
 - THE END OF THE TRACER CABLE SHALL BE CONTINUOUS AND EXTEND INTO THE CONTROLLER CABINET.
 - LIGHTING CONDUIT AND LUMINAIRE QUANTITIES TO BE INCLUDED IN LIGHTING QUANTITIES.

REVISIONS	
NAME	DATE

Clorba Group, Inc.
CONSULTING ENGINEERS
5507 North Cumberland Avenue, Suite 402 Chicago, Illinois 60656
Tel. 773.775.4009 Fax 773.775.4014 Email chicago@clorba.com

CITY OF NORTH CHICAGO
MARTIN LUTHER KING JR. DRIVE IMPROVEMENTS

TRAFFIC SIGNAL CABLE PLAN
MARTIN LUTHER KING JR. DRIVE
AND COMMONWEALTH AVENUE

SCALE: N.T.S. DRAWN BY: KDM
DATE: APRIL, 2008 CHECKED BY: MJL

DATE: 7/1/2008 TIME: 8:35:11 AM FILENAME: N:\PROJ\05161\Design\Signals\Plan Sheets\05161-12-Comm-pr-cable-plan.dgn