

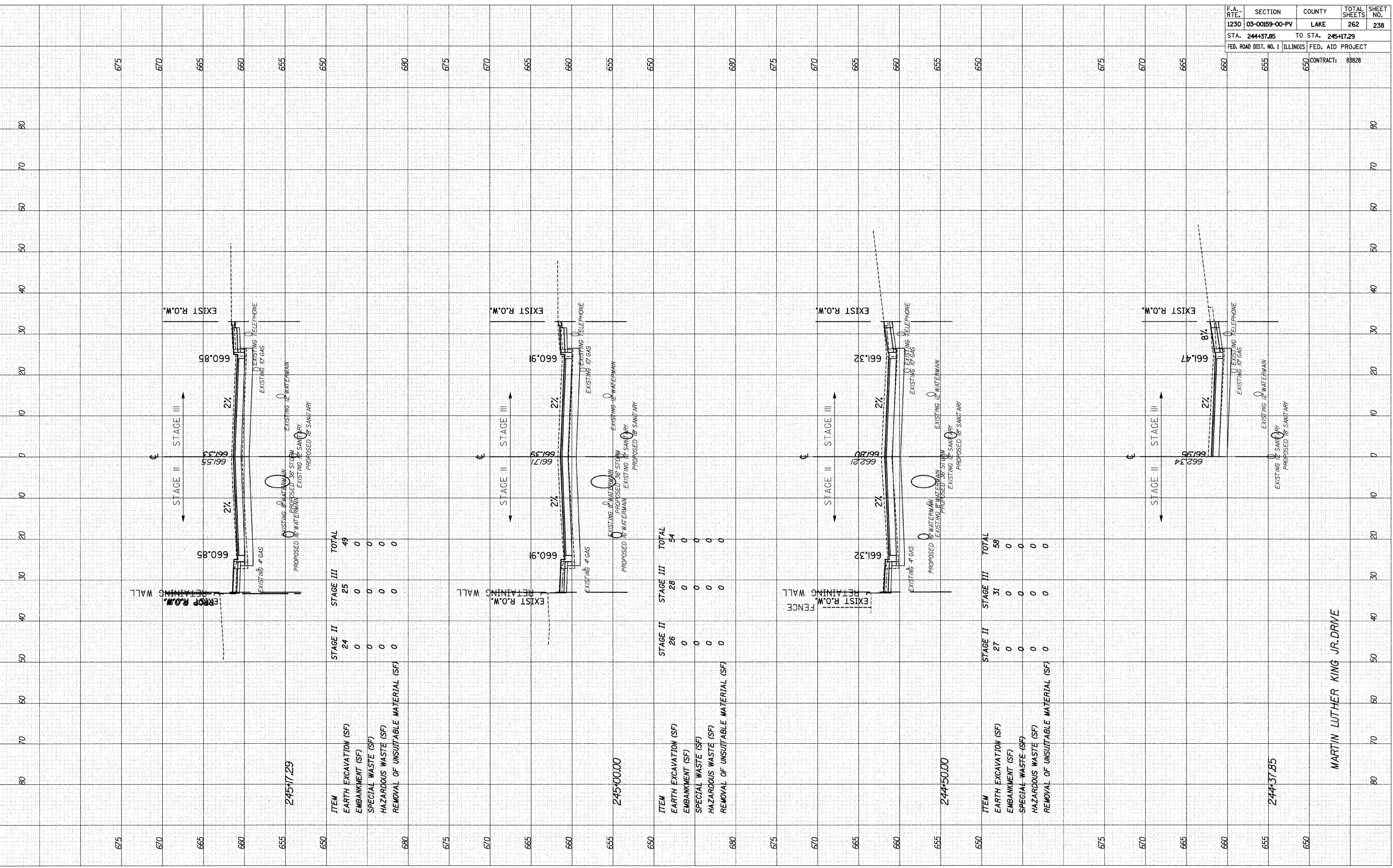
DATE: 7/1/2008 TIME: 3:30:16 PM

FILENAME: N:\PROJ\5161\Design\Xsections\5161-mk-sheet.dgn

DATE	BY

DATE	BY

DATE	BY



245+00.00

ITEM	STAGE II	STAGE III	TOTAL
EARTH EXCAVATION (SF)	24	25	49
EMBANKMENT (SF)	0	0	0
SPECIAL WASTE (SF)	0	0	0
HAZARDOUS WASTE (SF)	0	0	0
REMOVAL OF UNSUITABLE MATERIAL (SF)	0	0	0

245+00.00

ITEM	STAGE II	STAGE III	TOTAL
EARTH EXCAVATION (SF)	26	28	54
EMBANKMENT (SF)	0	0	0
SPECIAL WASTE (SF)	0	0	0
HAZARDOUS WASTE (SF)	0	0	0
REMOVAL OF UNSUITABLE MATERIAL (SF)	0	0	0

244+50.00

ITEM	STAGE II	STAGE III	TOTAL
EARTH EXCAVATION (SF)	27	31	58
EMBANKMENT (SF)	0	0	0
SPECIAL WASTE (SF)	0	0	0
HAZARDOUS WASTE (SF)	0	0	0
REMOVAL OF UNSUITABLE MATERIAL (SF)	0	0	0

244+37.85

ITEM	STAGE II	STAGE III	TOTAL
EARTH EXCAVATION (SF)	27	31	58
EMBANKMENT (SF)	0	0	0
SPECIAL WASTE (SF)	0	0	0
HAZARDOUS WASTE (SF)	0	0	0
REMOVAL OF UNSUITABLE MATERIAL (SF)	0	0	0

MARTIN LUTHER KING JR.DRIVE

F.A. RTE.	SECTION	COUNTY	TOTAL SHEETS	SHEET NO.
1230	03-00159-00-PV	LAKE	262	238
STA. 244+37.85	TO STA. 245+17.29			
FED. ROAD DIST. NO. 1	ILLINOIS	FED. AID PROJECT		
CONTRACT:		83828		