

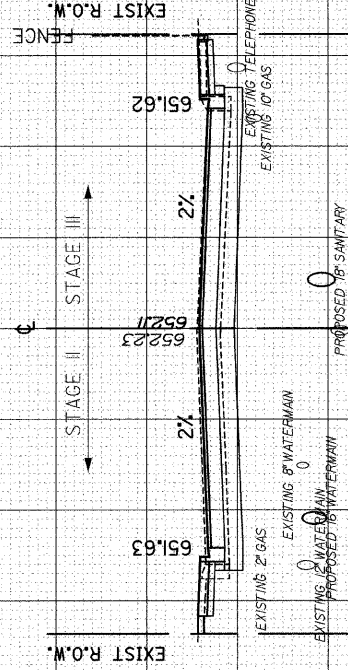
DATE: 7/1/2008 TIME: 9:58:31 PM

FILENAME: N:\PROJ\51611\Design\Xsections\51611-mlk-sheet.dgn

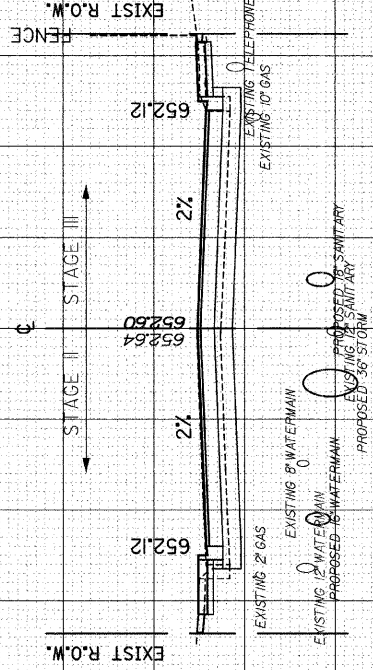
FINAL SURVEY	SURVEYED	BY	DATE
NOTE BOOK	PLOTTED		
NO.	DATE		
	AREAS CHECKED		

ORIGINAL SURVEY	SURVEYED	BY	DATE
NOTE BOOK	PLOTTED		
NO.	DATE		
	AREAS CHECKED		

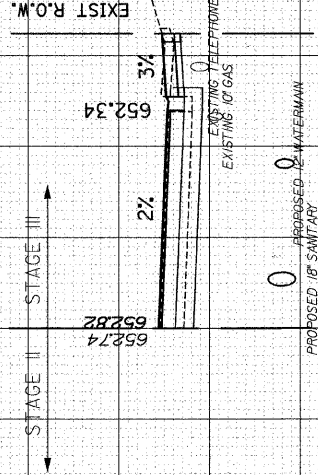
F.A. R.T.E.	SECTION	COUNTY	TOTAL SHEETS	SHEET NO.
1230	03-00159-00-PV	LAKE	262	244
STA. 252+50		TO STA. 253+50		
FED. ROAD DIST. NO. 1		ILLINOIS FED. AID PROJECT		
		CONTRACT: 85828		



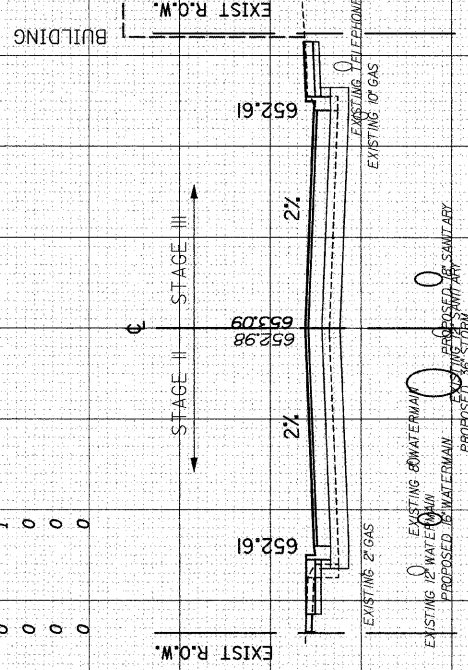
ITEM	STAGE II	STAGE III	TOTAL
EARTH EXCAVATION (SF)	22	22	44
EMBANKMENT (SF)	1	0	1
SPECIAL WASTE (SF)	0	0	0
HAZARDOUS WASTE (SF)	0	0	0
REMOVAL OF UNSUITABLE MATERIAL (SF)	0	1	1



ITEM	STAGE II	STAGE III	TOTAL
EARTH EXCAVATION (SF)	20	19	39
EMBANKMENT (SF)	1	0	1
SPECIAL WASTE (SF)	0	0	0
HAZARDOUS WASTE (SF)	0	0	0
REMOVAL OF UNSUITABLE MATERIAL (SF)	0	1	1



ITEM	STAGE II	STAGE III	TOTAL
EARTH EXCAVATION (SF)	17	19	36
EMBANKMENT (SF)	1	0	1
SPECIAL WASTE (SF)	0	0	0
HAZARDOUS WASTE (SF)	0	0	0
REMOVAL OF UNSUITABLE MATERIAL (SF)	0	0	0



253+50.00

MARTIN LUTHER KING JR. DRIVE

665

660

655

650

645

640

665

660

655

650

645

640

665

660

655

650

645

640

675

670

665

660

655

650

645

640

CONTRACT: 85828

80

70

60

50

40

30

20

10

0

10

20

30

40

50

60

70

80