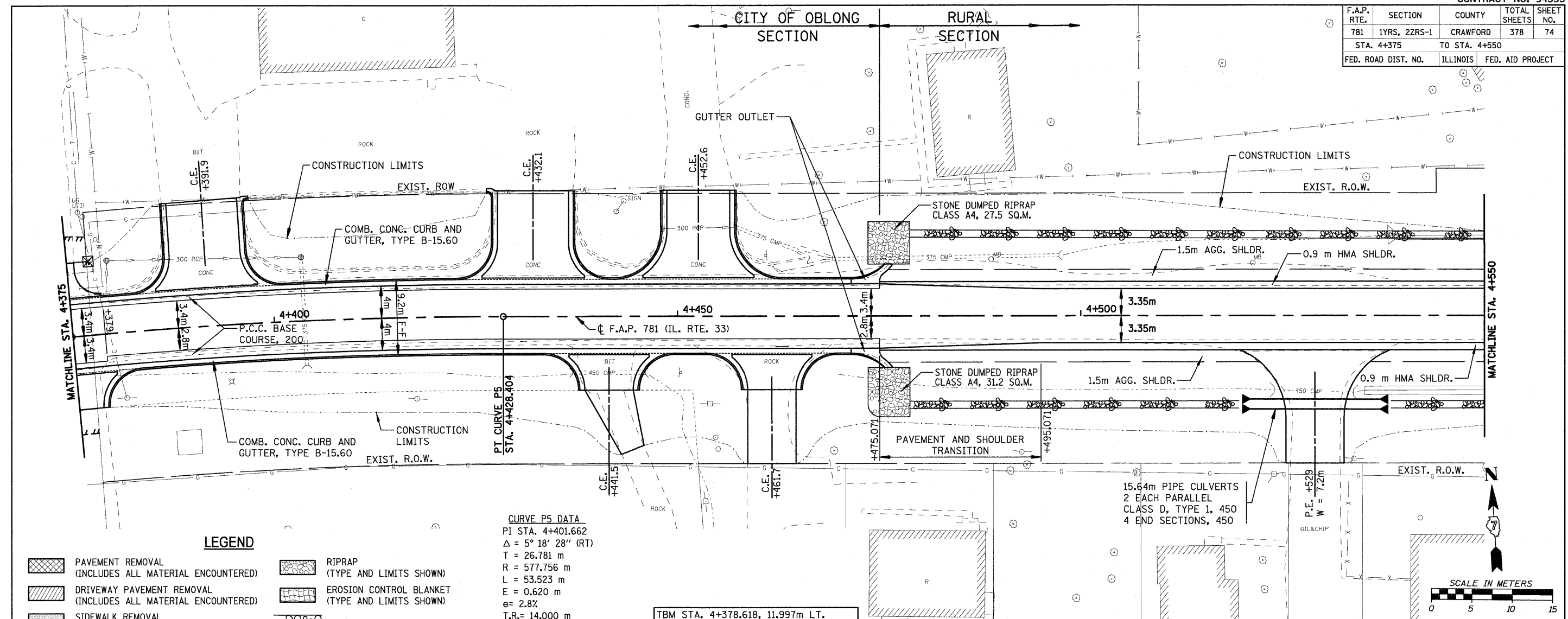


F.A.P. RTE.	SECTION	COUNTY	TOTAL SHEETS	SHEET NO.
781	1YRS, 2ZRS-1	CRAWFORD	378	74
STA. 4+375		TO STA. 4+550		
FED. ROAD DIST. NO.		ILLINOIS	FED. AID PROJECT	



LEGEND

- PAVEMENT REMOVAL (INCLUDES ALL MATERIAL ENCOUNTERED)
- DRIVEWAY PAVEMENT REMOVAL (INCLUDES ALL MATERIAL ENCOUNTERED)
- SIDEWALK REMOVAL (INCLUDES STEPS)
- TREE REMOVAL (HECTARES)
- RIPRAP (TYPE AND LIMITS SHOWN)
- EROSION CONTROL BLANKET (TYPE AND LIMITS SHOWN)
- AGGREGATE DITCH
- TREE REMOVAL

CURVE P5 DATA

PI STA. 4+401.662
 $\Delta = 5^\circ 18' 28''$ (RT)
 T = 26.781 m
 R = 577.756 m
 L = 53.523 m
 E = 0.620 m
 e = 2.8%
 T.R. = 14.000 m
 S.E. RUN (L₁) = 20.000 m
 PC STA. 4+374.882
 PT STA. 4+428.404

TBM STA. 4+378.618, 11.997m LT.
 ELEV. 151.167 TOP NE BOLT ON RIM OF FIRE HYDRANT, NORTH SIDE OF IL. 33 (NEW) FIRST ROBINSON SAVINGS BANK

