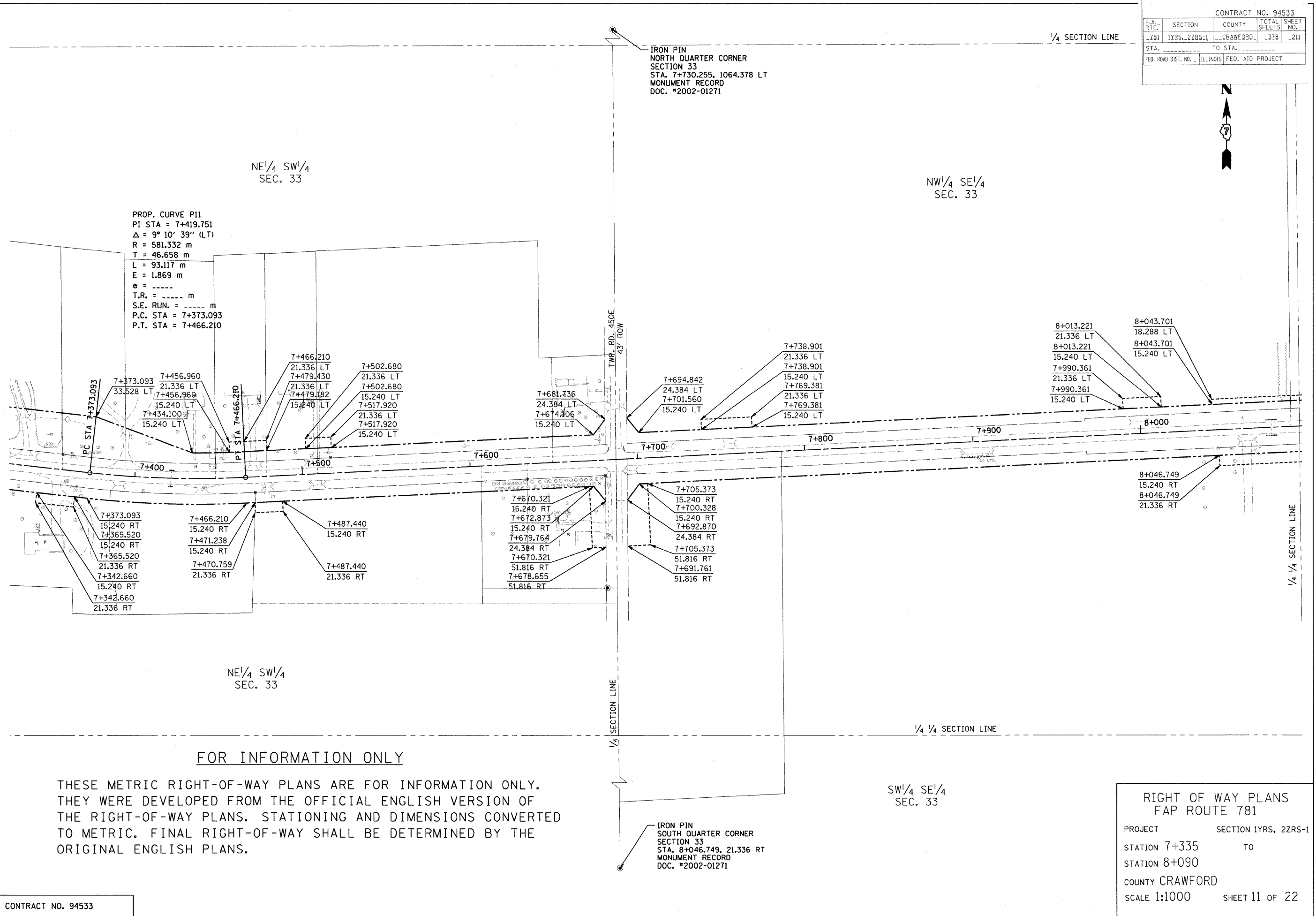


CONTRACT NO. 94533			
F.A. RTE.	SECTION	COUNTY	TOTAL SHEET NO.
781	1YRS, 2ZRS-1	CRAWFORD	378
STA.		TO STA.	
FED. ROAD DIST. NO.		ILLINOIS FED. AID PROJECT	



PROP. CURVE P11  
 PI STA = 7+419.751  
 $\Delta = 9^\circ 10' 39''$  (LT)  
 R = 581.332 m  
 T = 46.658 m  
 L = 93.117 m  
 E = 1.869 m  
 e = -----  
 T.R. = ----- m  
 S.E. RUN. = ----- m  
 P.C. STA = 7+373.093  
 P.T. STA = 7+466.210

IRON PIN  
 NORTH QUARTER CORNER  
 SECTION 33  
 STA. 7+730.255, 1064.378 LT  
 MONUMENT RECORD  
 DOC. #2002-01271

IRON PIN  
 SOUTH QUARTER CORNER  
 SECTION 33  
 STA. 8+046.749, 21.336 RT  
 MONUMENT RECORD  
 DOC. #2002-01271

**FOR INFORMATION ONLY**

THESE METRIC RIGHT-OF-WAY PLANS ARE FOR INFORMATION ONLY. THEY WERE DEVELOPED FROM THE OFFICIAL ENGLISH VERSION OF THE RIGHT-OF-WAY PLANS. STATIONING AND DIMENSIONS CONVERTED TO METRIC. FINAL RIGHT-OF-WAY SHALL BE DETERMINED BY THE ORIGINAL ENGLISH PLANS.

**RIGHT OF WAY PLANS**  
**FAP ROUTE 781**  
 PROJECT SECTION 1YRS, 2ZRS-1  
 STATION 7+335 TO STATION 8+090  
 COUNTY CRAWFORD  
 SCALE 1:1000 SHEET 11 OF 22