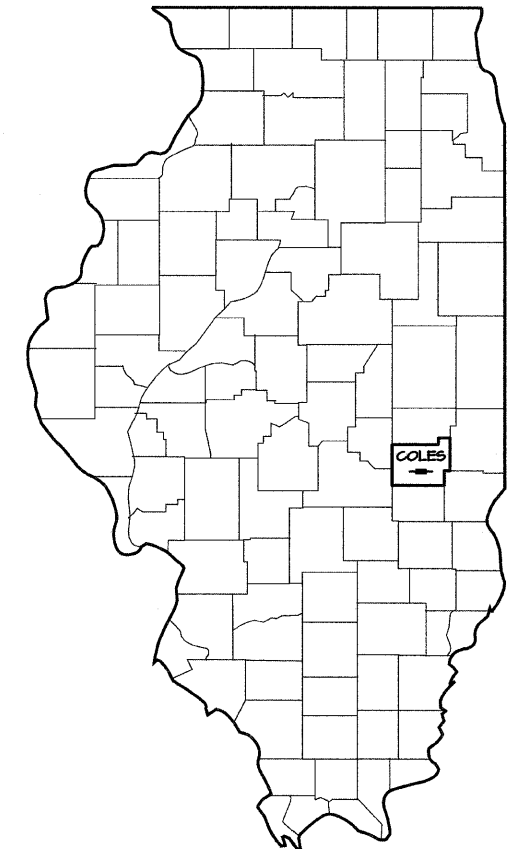


SECTION	COUNTY	TOTAL SHEETS	SHEET NO.
95-02130-00-HP	COLES	6	1

Project No. TE-00D7(33)

STATE OF ILLINOIS DEPARTMENT OF TRANSPORTATION DIVISION OF HIGHWAYS

PLANS FOR HISTORICAL BRIDGE REHABILITATION



LOCATION OF SECTION INDICATED THUS →

TOLL FREE "JOINT UTILITY LOCATING INFORMATION FOR EXCAVATORS" (J.U.L.I.E.) TELEPHONE NUMBER 1-800-892-0123

INDEX OF SHEETS

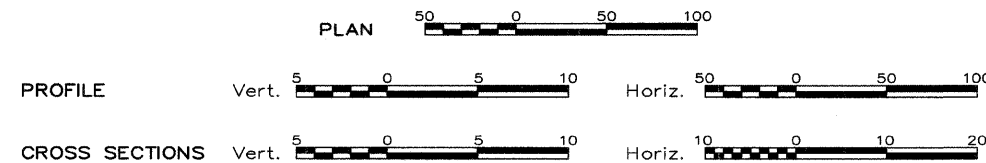
- 1 COVER SHEET
- 2 SUMMARY OF QUANTITIES & GENERAL NOTES
- 3 BRIDGE PLAN
- 4 BRIDGE ELEVATIONS
- 5 TYPICAL CROSS SECTIONS
- 6 HANDRAIL REPAIRS

STANDARDS

- 701901 - TRAFFIC CONTROL DEVICES
- BLR 21-7 - TYPICAL APPLICATION OF TRAFFIC CONTROL DEVICES FOR CONSTRUCTION ON RURAL LOCAL HIGHWAYS
- BLR 22-5 - TYPICAL APPLICATION OF T.C.D. FOR RURAL LOC. HWYS. (2-LANE 2-WAY RURAL TRAFF.) (RD CLOSED TO THRU TRAFF.)
- 44-2201-03 CLASS C AND D PATCHES

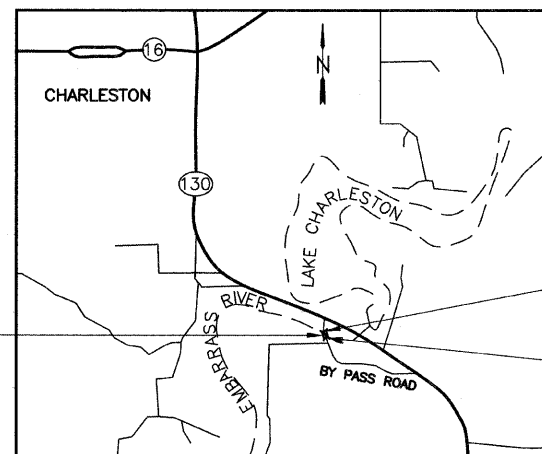
FUNCTIONAL CLASS - RURAL LOCAL ROAD
ADT - 100
DESIGN SPEED - 30 MPH

SCALE IN FEET



SECTION 95-02130-00-HP
BLAKEMAN BRIDGE
COLES COUNTY
JOB NO. C-97-083-08
PROJECT NO. TE-00D7(33)
T.R. 193 (BYPASS ROAD)

R 9 E, 3RD P.M.



PROJECT LOCATION MAP
NOT TO SCALE

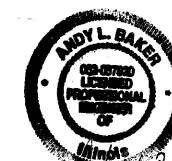
STRUCTURE
STA. 11+29.14, 18 FT x 262 FT LONG,



T 12 N

BEGIN SECTION
STA. 10+00.00
END SECTION
STA. 12+61.53

NOT TO SCALE



Andy L. Baker
7/23/08

CONTRACT NO. 95558

The Upchurch Group
4413 W. Roosevelt Rd. Suite 108 Hillside, IL 60162
Phone: 708.449.2321
upchurch@upchurchgroup.com upchurchgroup@upchurchgroup.com

TOTAL LENGTH OF SECTION = 262 FEET = 0.05 MILES
NET LENGTH OF SECTION = 262 FEET = 0.05 MILES

APPROVED July 18 20 08
Neil G. Olson
COUNTY ENGINEER

PASSED July 23 20 08
Maurice East
DISTRICT SEVEN ENGINEER OF LOCAL ROADS & STREETS

Released For Bid Based on Limited Review
July 23 20 08
Roger T. Buehler
DEPUTY DIRECTOR OF HIGHWAYS, REGION FOUR ENGINEER

STATE OF ILLINOIS
DEPARTMENT OF TRANSPORTATION