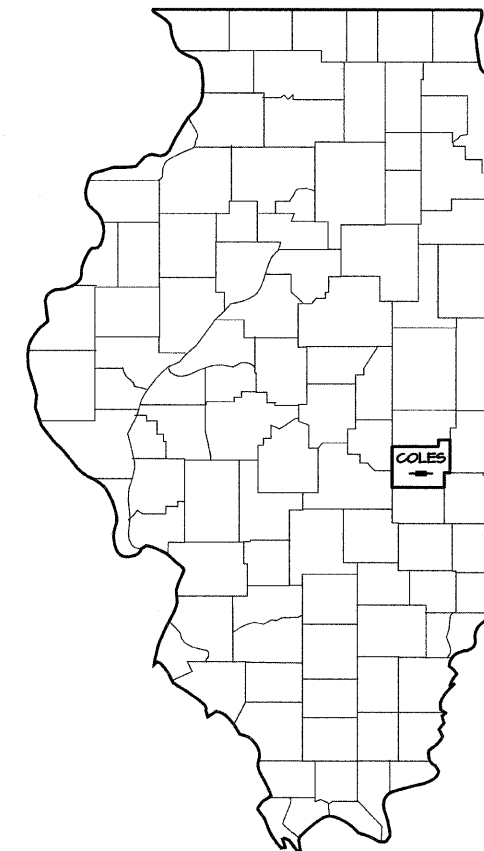


SECTION	COUNTY	TOTAL SHEETS	SHEET NO.
95-02130-00-HP	COLES	6	1

Project No. TE-00D7(33)

STATE OF ILLINOIS DEPARTMENT OF TRANSPORTATION DIVISION OF HIGHWAYS

PLANS FOR HISTORICAL BRIDGE REHABILITATION



LOCATION OF SECTION INDICATED THUS →

TOLL FREE "JOINT UTILITY LOCATING INFORMATION FOR EXCAVATORS" (J.U.L.I.E.) TELEPHONE NUMBER 1-800-892-0123

INDEX OF SHEETS

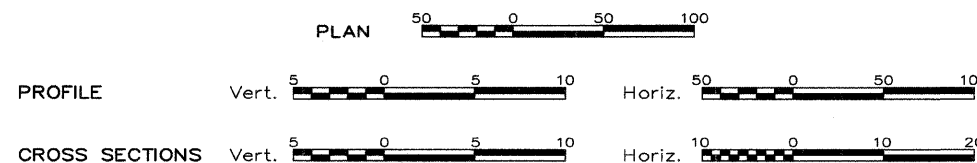
- 1 COVER SHEET
- 2 SUMMARY OF QUANTITIES & GENERAL NOTES
- 3 BRIDGE PLAN
- 4 BRIDGE ELEVATIONS
- 5 TYPICAL CROSS SECTIONS
- 6 HANDRAIL REPAIRS

STANDARDS

- 701901 - TRAFFIC CONTROL DEVICES
- BLR 21-7 - TYPICAL APPLICATION OF TRAFFIC CONTROL DEVICES FOR CONSTRUCTION ON RURAL LOCAL HIGHWAYS
- BLR 22-5 - TYPICAL APPLICATION OF T.C.D. FOR RURAL LOC. HWYS. (2-LANE 2-WAY RURAL TRAFF.) (RD CLOSED TO THRU TRAFF.) CLASS C AND D PATCHES
- 44-2201-03

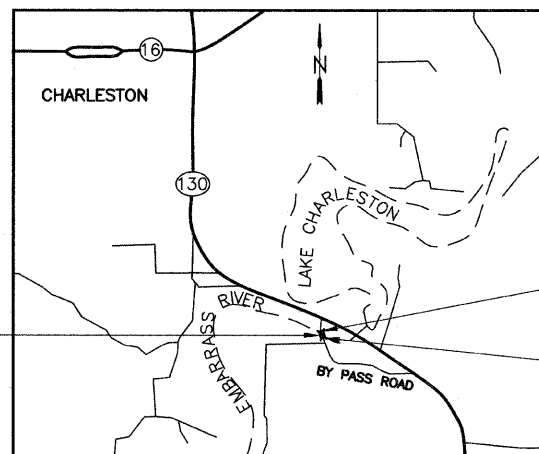
FUNCTIONAL CLASS - RURAL LOCAL ROAD
ADT - 100
DESIGN SPEED - 30 MPH

SCALE IN FEET



SECTION 95-02130-00-HP
BLAKEMAN BRIDGE
COLES COUNTY
JOB NO. C-97-083-08
PROJECT NO. TE-00D7(33)
T.R. 193 (BYPASS ROAD)

R 9 E, 3RD P.M.

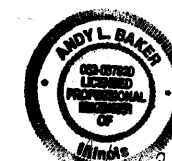


PROJECT LOCATION MAP
NOT TO SCALE

STRUCTURE
STA. 11+29.14, 18 FT x 262 FT LONG,

BEGIN SECTION
STA. 10+00.00
END SECTION
STA. 12+61.53

NOT TO SCALE



Andy L. Baker
7/23/08

CONTRACT NO. 95558

**The
Upchurch
Group**

4413 W. Roosevelt Rd.
Suite 108
Hillside, IL 60162
Phone: 708.449.2321
upchurch@upchurchgroup.com

123 North 15th Street
Mattoon, IL 61938
Phone: 217.235.3177
upchurchgroup@upchurchgroup.com

APPROVED July 18 20 08
Neil G. Olson
COUNTY ENGINEER

PASSED July 23 20 08
Maurice East
DISTRICT SEVEN ENGINEER OF
LOCAL ROADS & STREETS

Released For
Bid Based on
Limited Review

July 23 20 08
Roger T. Buehler
DEPUTY DIRECTOR OF HIGHWAYS,
REGION FOUR ENGINEER

STATE OF ILLINOIS
DEPARTMENT OF TRANSPORTATION

SECTION	COUNTY	TOTAL SHEETS	SHEET NO.
95-02130-00-HP	COLES	6	2

SUMMARY OF QUANTITIES

CODE NUMBER	ITEM	UNITS	QUANTITY
20101000	TEMPORARY FENCE	FOOT	790
44201329	CLASS C PATCHES, TYPE II, 8 INCH	SQYD	40
50102500	CONCRETE REMOVAL (SPECIAL)	CUYD	29.2
50200200	STRUCTURE EXCAVATION (SPECIAL)	CUYD	65
59300100	CONTROLLED LOW-STRENGTH MATERIAL	CUYD	65
67100100	MOBILIZATION	LSUM	1
XX002909	CLASS SI CONCRETE (MISCELLANEOUS)	CUYD	1.5
XX007580	TOP RAILING REPLACEMENT(SPECIAL)	FOOT	499
XX007581	PANEL REPLACEMENT(SPECIAL)	EACH	170
XX007582	GALVANIZED ANGLE BRACKETS	EACH	8
XX007583	1 1/2" DIAMETER RODS AND STAR PLATES	EACH	6

GENERAL NOTES

1. ALL REINFORCEMENT BARS SHALL CONFORM TO THE REQUIREMENTS OF AASHTO M-31M, M-42M, OR M-53M GRADE 60 FOR DEFORMED BARS.
2. CHAMFER ALL EXPOSED CONCRETE EDGES 3/4" UNLESS OTHERWISE NOTED.
3. CONCRETE COVER ON ALL STEEL SHALL BE A MINIMUM OF 2" UNLESS OTHERWISE NOTED.
4. THE MINIMUM LAP LENGTH REQUIRED FOR REINFORCING BARS SHALL BE FORTY (40) TIMES THE DIAMETER OF THE BAR.

Summary Quantities
BAKER 2-13-07



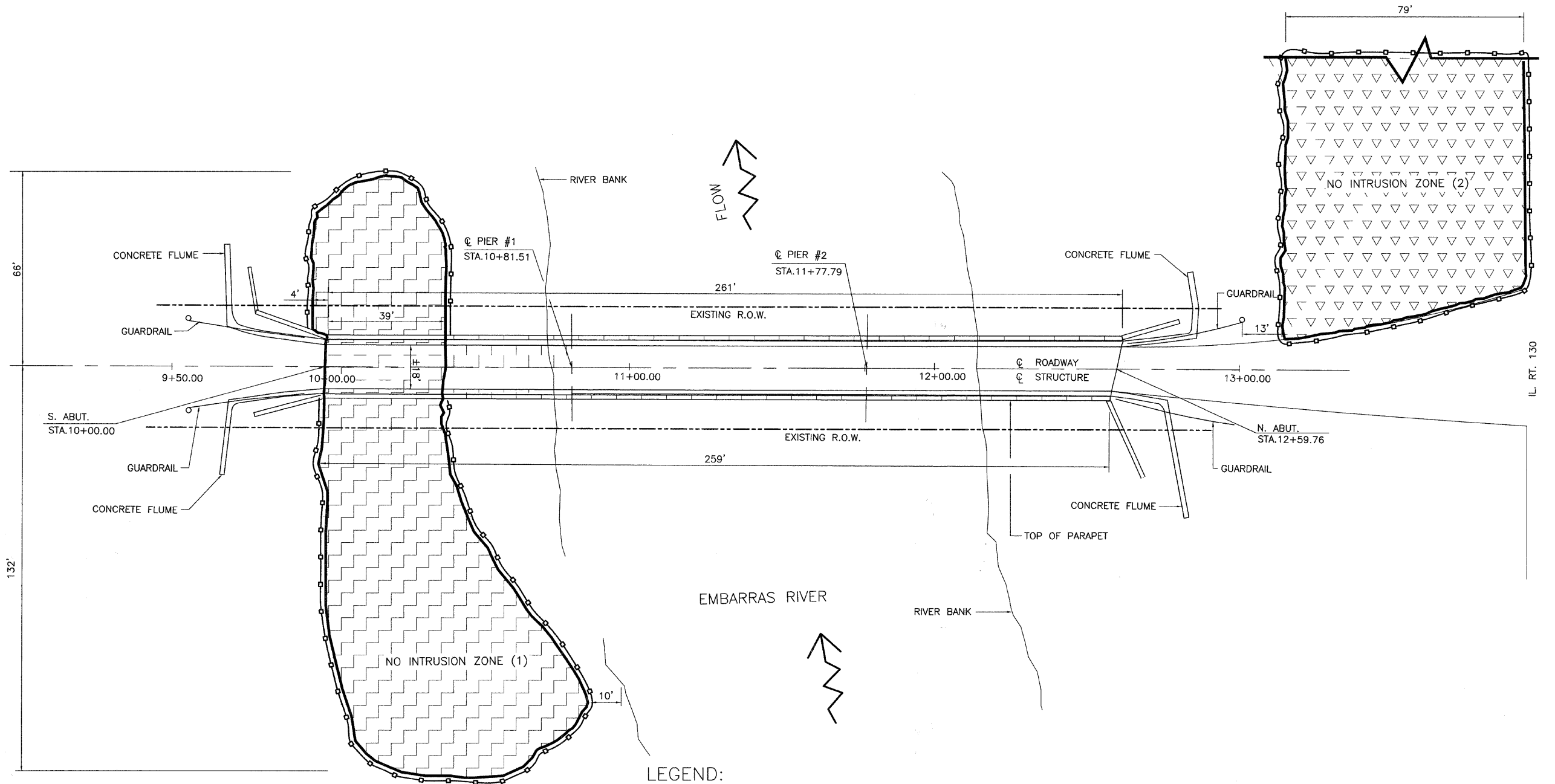
MARTIN SILVESTER
STRUCTURAL ENGINEER
LICENSE EXPIRES NOV. 30, 2008

M. Silvester 07-17-08

SUMMARY OF QUANTITIES		The Upchurch Group <small>architects engineers surveyors</small>
Blakeman Bridge Section 95-02130-00-HP IHPA Log No. 018072707 TR 193 Over The Embarras River Coles County		
Drawn <u>A.L. Baker</u>	Project No. <u>16102048</u>	<small>4413 W. Roosevelt Rd. Suite 109 Elliott, IL 60162 Phone: 708.449.2321 upchurch@upchurchgroup.com</small>
Checked <u>MJS</u>		
Date <u>JULY 2008</u>	Professional Design Firm Corporation License No. 184-003401	
Rev. _____		

123 North 15th Street
Mantua, IL 61938
Phone: 217.239.9177
upchurch@upchurchgroup.com

SECTION	COUNTY	TOTAL SHEETS	SHEET NO.
95-02130-00-HP	COLES	6	3



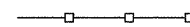
LEGEND:



NO INTRUSION ZONE(1)-WETLAND AREA, NO PERMANENT GRADING OR UNNECESSARY CLEARING TO BE DONE IN THIS AREA. ACCESS TO OR FROM THE EMBARRAS RIVER FOR THE CONSTRUCTION OF THIS PROJECT IS PROHIBITED FROM THE SOUTH BANK. TEMPORARY SIGNING AND FENCING TO BE ERECTED BY THE CONTRACTOR AS DIRECTED BY THE ENGINEER. SEE SPECIAL PROVISIONS.



NO INTRUSION ZONE(2) ENDANGERED SPECIES AREA, ABSOLUTELY NO CONSTRUCTION EQUIPMENT, MATERIALS VEHICLES OR WORKMEN TO USE THIS NO INTRUSION AREA FOR STORAGE OR TRAVEL TO OR FROM THE WORK. TEMPORARY SIGNING AND FENCING TO BE ERECTED BY THE CONTRACTOR AS DIRECTED BY THE ENGINEER. SEE SPECIAL PROVISIONS.



TEMPORARY FENCE

BRIDGE PLAN



BMNPLAN2
REVISED 3/28/07

BRIDGE PLAN

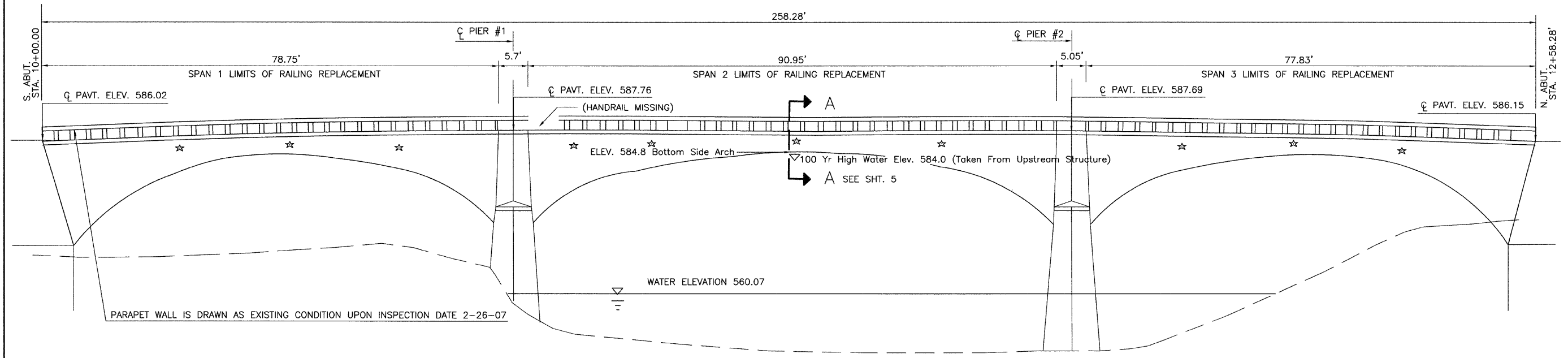
Blakeman Bridge
Section 95-02130-00-HP
IHPA Log No. 018072707
TR 193 Over The Embarras River
Coles County

Drawn <u>A.L. BAKER</u>	Project No. <u>16102048</u>
Checked <u>MED</u>	
Date <u>JULY 2008</u>	
Rev. _____	Professional Design Firm Corporation License No. 184-003401

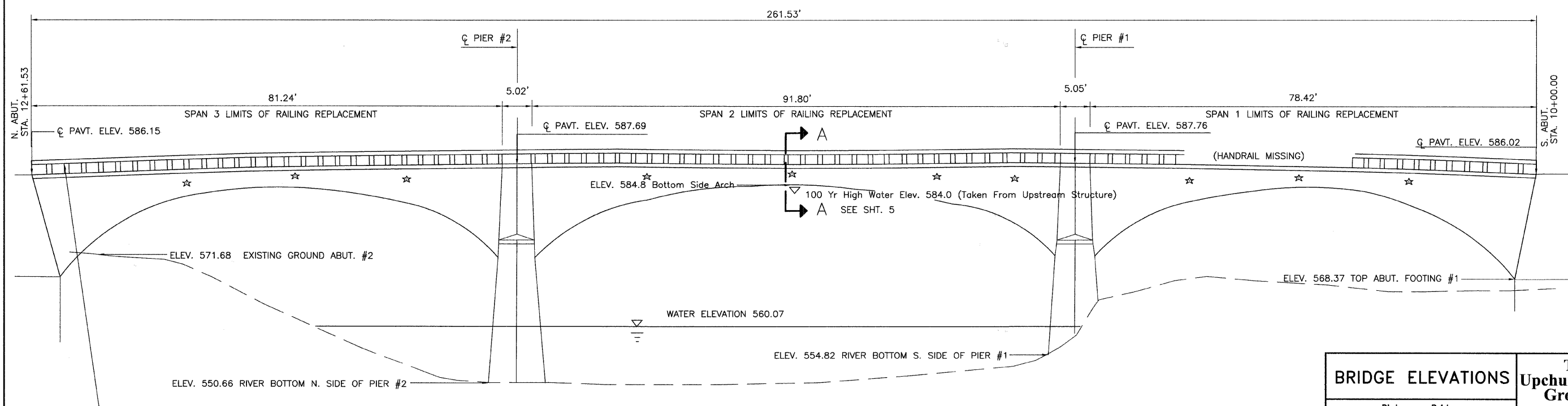
The Upchurch Group

architects
engineers
surveyors
4413 W. Roosevelt Rd.
Suite 108
Hillside, IL 60162
Phone: 708.449.2321
upchurch@upchurchgroup.com
123 North 15th Street
Morton, IL 61558
Phone: 317.235.3177
upchurchm@upchurchgroup.com

SECTION	COUNTY	TOTAL SHEETS	SHEET NO.
95-02130-00-HP	COLES	6	4



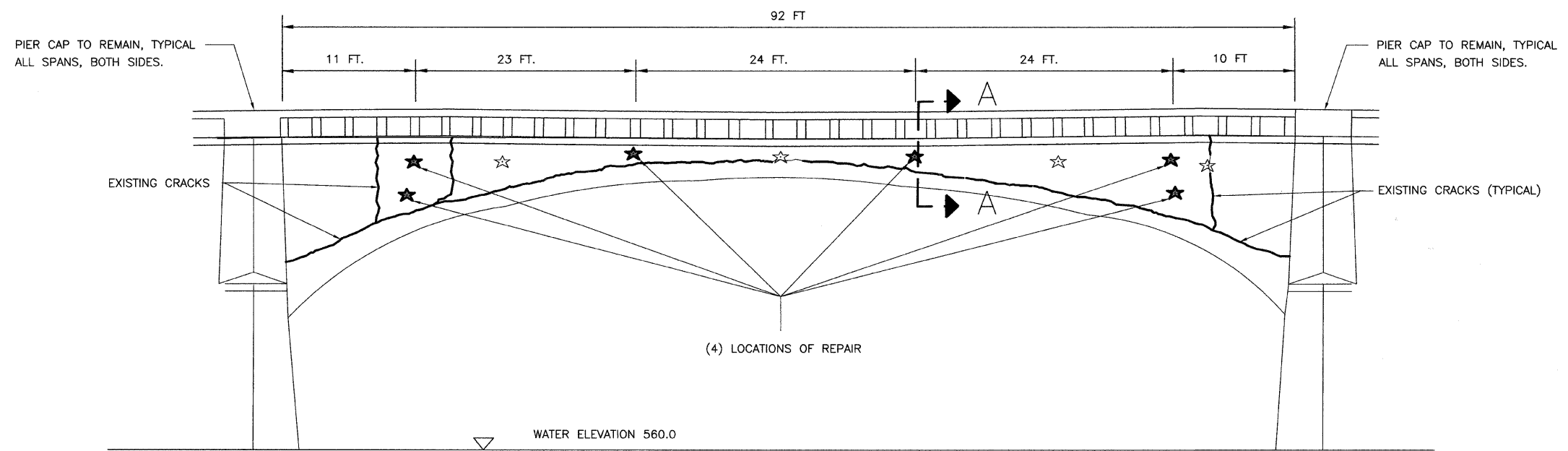
EAST ELEVATION



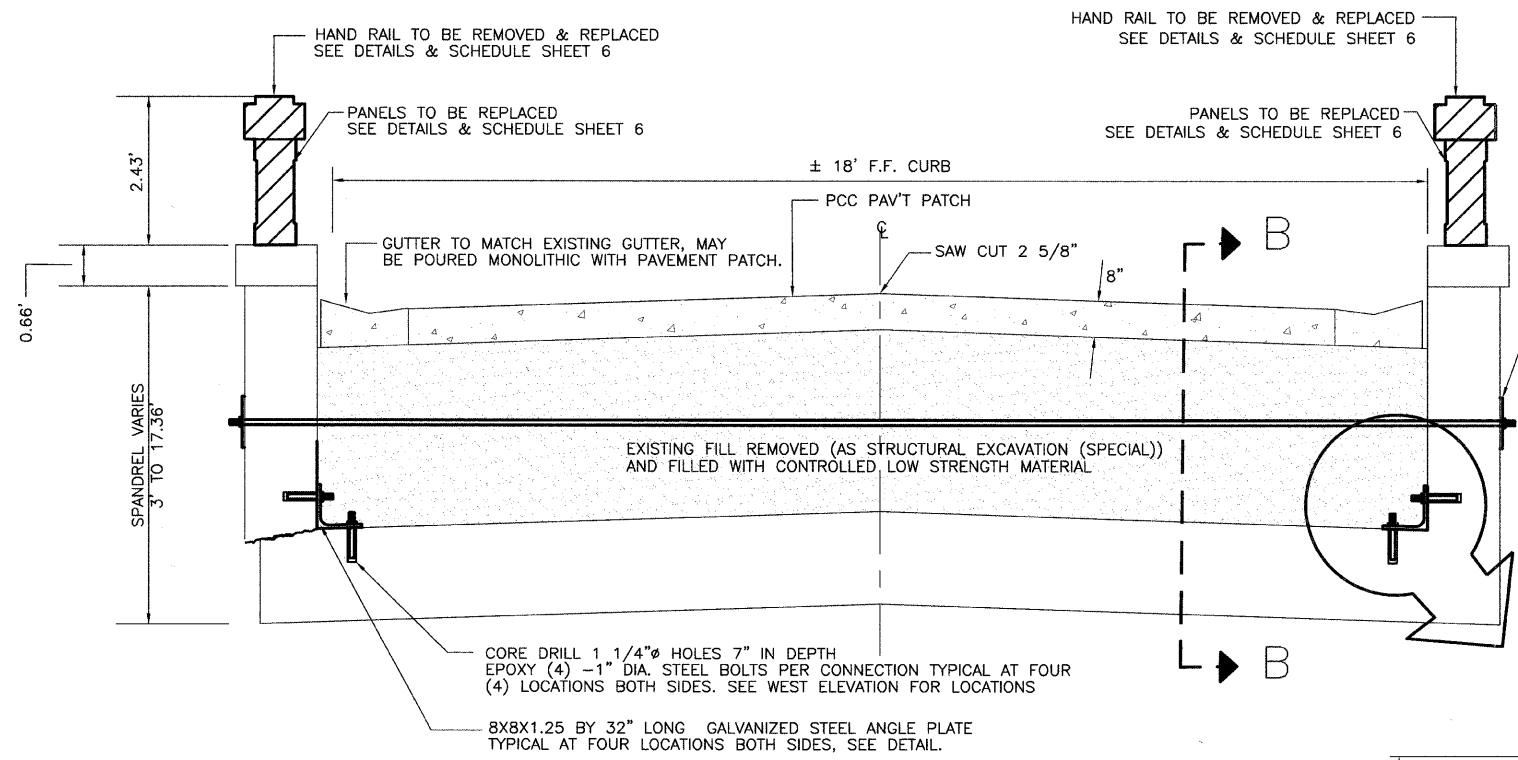
WEST ELEVATION

BRIDGE ELEVATIONS		The Upchurch Group architects engineers surveyors
Blakeman Bridge Section 95-02130-00-HP IHPA Log No. 018072707 TR 193 Over The Embarras River Coles County		
Drawn <u>AL BAKER</u>	Project No. <u>16102048</u>	4413 W. Roosevelt Rd. Suite 108 Holt, MO 64503 Phone: 781-640-2321 upchurch@upchurchgroup.com
Checked <u>MED</u>		
Date <u>JULY 2008</u>	Professional Design Firm Corporation License No. 184-003401	
Rev. _____		123 North 1 1/2 Street Mason, IL 61898 Phone: 217-238-3177 upchurch@upchurchgroup.com

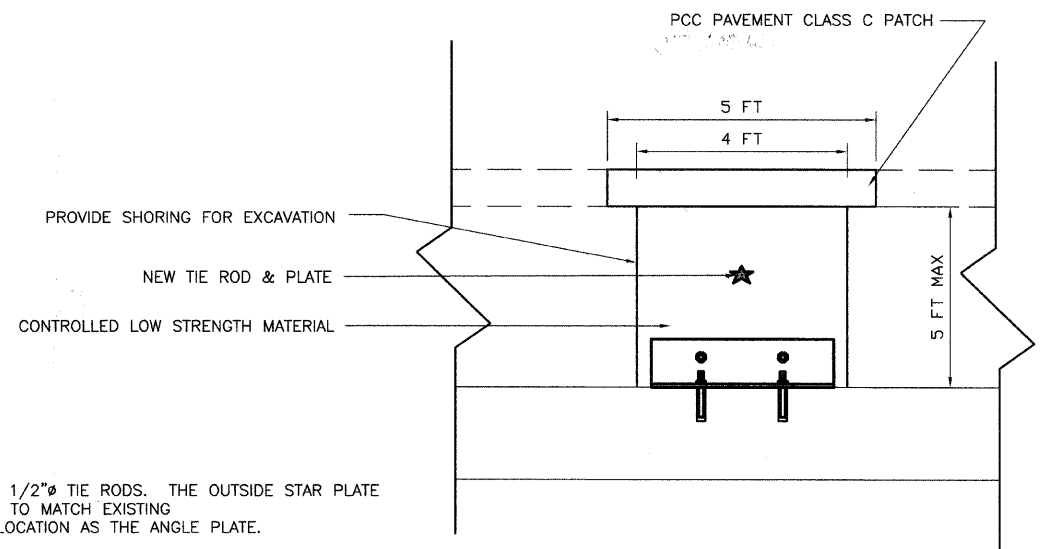
SECTION	COUNTY	TOTAL SHEETS	SHEET NO.
95-02130-00-HP	COLES	6	5



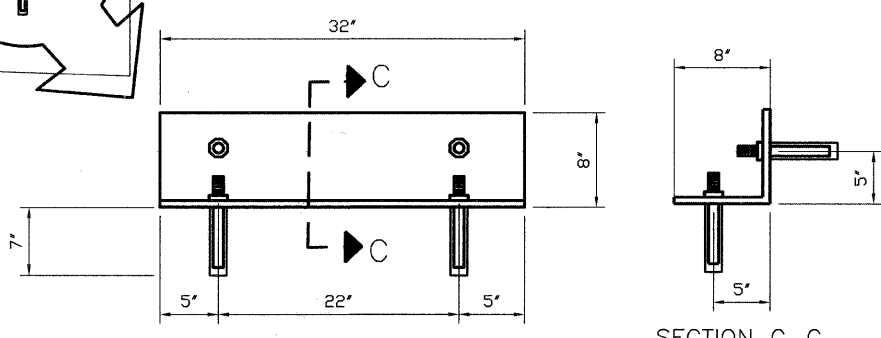
WEST ELEVATION SPAN 2



SECTION A-A TYPICAL REPAIR SECTION



SECTION B-B TYPICAL REPAIR SECTION



GALVANIZED ANGLE BRACKET DETAIL

TYPICAL REPAIR SECTIONS

Blakeman Bridge
 Section 95-02130-00-HP
 IHPA Log No. 018072707
 TR 193 Over The Embarras River
 Coles County

Drawn AL BAKER Project No. 16102048
 Checked MJS
 Date JULY 2008
 Rev. _____

Professional Design Firm
 Corporation License
 No. 184-003401

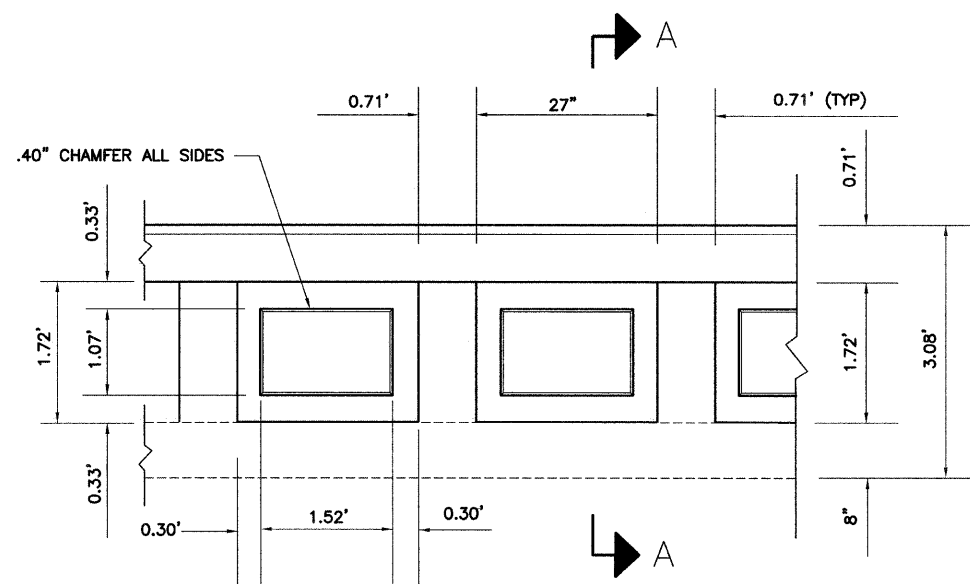
The Upchurch Group
 architects
 engineers
 surveyors

4413 W. Roosevelt Rd.
 Suite 105
 Hillside, IL 60162
 Phone: 708.449.2321
 upchurchgroup@upchurchgroup.com

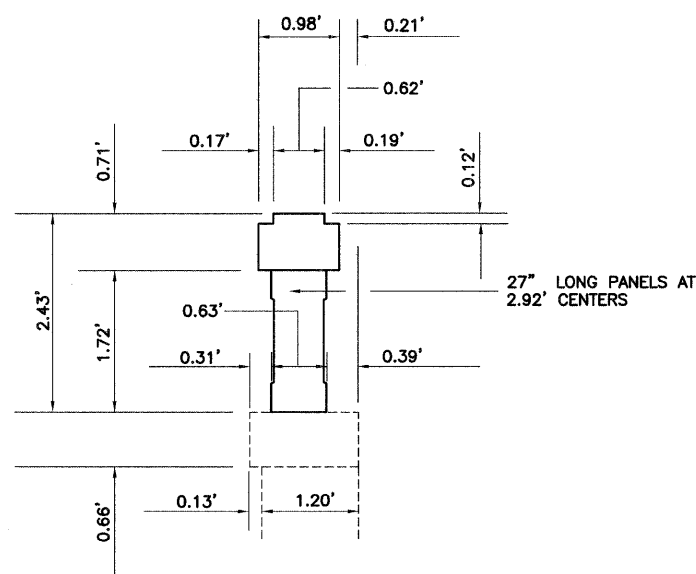
133 North 19th Street
 Marion, IL 61952
 Phone: 217.235.3177
 upchurchgroup@upchurchgroup.com

RMANSET4
 REVISED 5-6-07

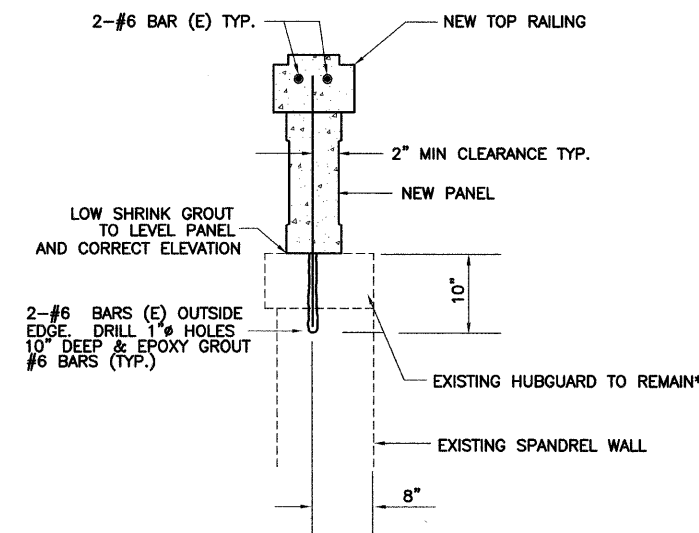
SECTION	COUNTY	TOTAL SHEETS	SHEET NO.
95-02130-00-HP	COLES	6	6



HANDRAIL SIDE ELEVATION



SECTION A-A



* REMOVE AND REPLACE DAMAGED HUBGUARD SECTIONS AS DIRECTED BY THE ENGINEER

SECTION A-A

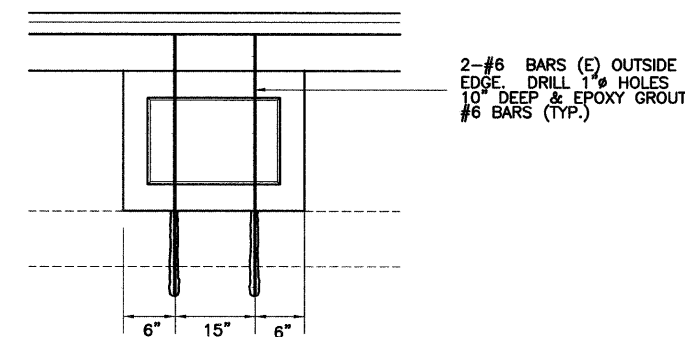
BILL OF MATERIAL EAST HANDRAIL

TOP RAILING AND PANEL REPLACEMENT				
STA.	PANEL (.087 CUYD EACH)	TOP RAILING (.026 CUYD/FT.)	CONCRETE REMOVAL HUBGUARD (CUYD)	CONCRETE CLASS SI HUBGUARD (CUYD)
10+00.0 TO 10+78.8	27	78.8		
10+84.5 TO 11+75.5	31	91.0		
11+80.5 TO 12+58.3	27	77.8		
VARIOUS			0.75	0.75
TOTAL	85 (7.4 CUYD)*	247.6 FT. (6.4 CUYD)*	0.75 CUYD*	0.75 CUYD

BILL OF MATERIAL WEST HANDRAIL

TOP RAILING AND PANEL REPLACEMENT				
STA.	PANEL (.087 CUYD EACH)	TOP RAILING (.026 CUYD/FT.)	CONCRETE REMOVAL HUBGUARD (CUYD)	CONCRETE CLASS SI HUBGUARD (CUYD)
10+00.0 TO 10+78.4	26	78.4		
10+83.5 TO 11+75.3	31	91.8		
11+80.4 TO 12+61.6	28	81.2		
VARIOUS			0.75	0.75
TOTAL	85 (7.4 CUYD)*	251.4 FT. (6.5 CUYD)*	0.75 CUYD*	0.75 CUYD

*PAID FOR AS CONCRETE REMOVAL (SPECIAL)



PANEL ELEVATION

REVISED 5-6-07

HANDRAIL REPLACEMENT		The Upchurch Group <small>architects engineers surveyors</small>
Blakeman Bridge Section 95-02130-00-HP IHPA Log No. 018072707 TR 193 Over The Embarras River Coles County		
Drawn <u>AL BAKER</u>	Project No. <u>16102048</u>	4413 W. Roosevelt Rd. Suite 108 Hillsdale, IL 60162 Phone: 708-449-2521 upchurchgroup@upchurchgroup.com
Checked <u>MJS</u>	Professional Design Firm Corporation License No. 184-003401	
Date <u>JULY 2008</u>	Rev. _____	