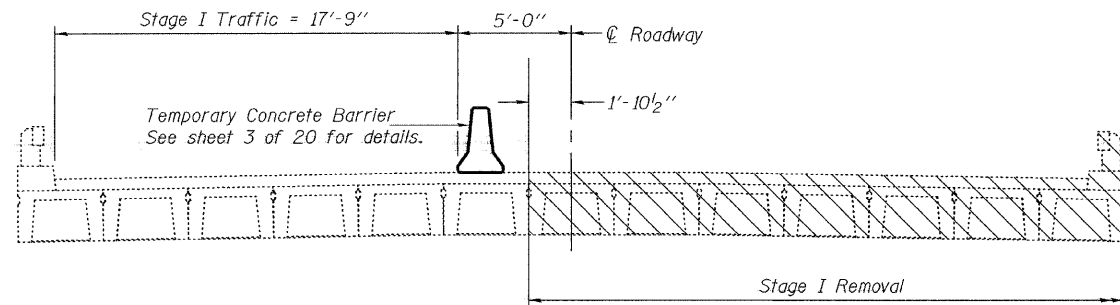


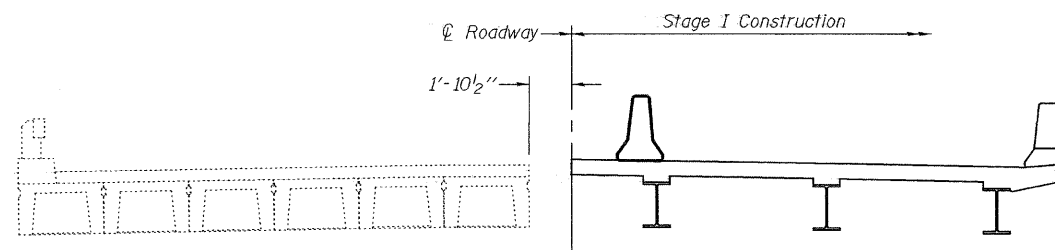
STATE OF ILLINOIS  
DEPARTMENT OF TRANSPORTATION

ROUTE NO.	SECTION	COUNTY	TOTAL SHEETS	SHEET NO.	SHEET NO. 4
F.A.P. 322	12-1, BR	UNION	36	20	20 SHEETS
FED. ROAD DIST. NO. 7	ILLINOIS	FED. AID PROJECT-			

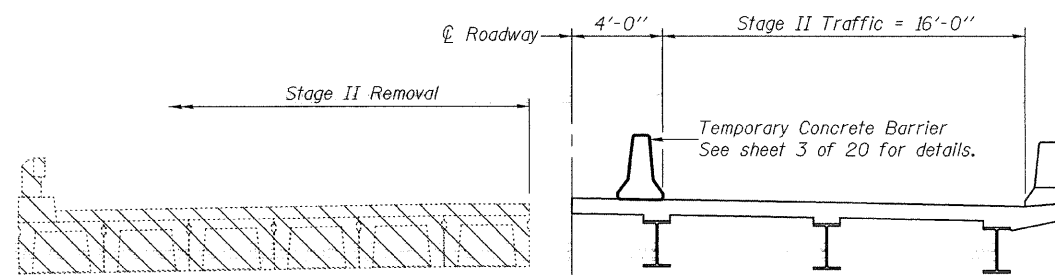
Contract #98886



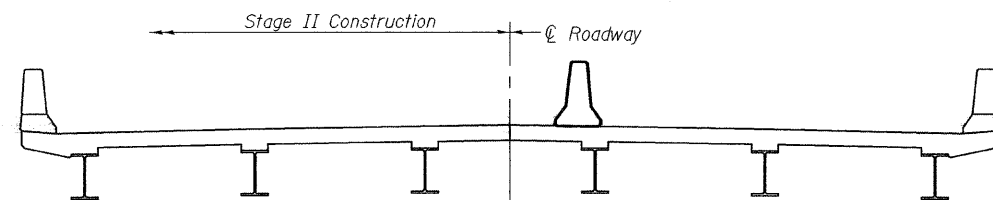
**STAGE I REMOVAL**



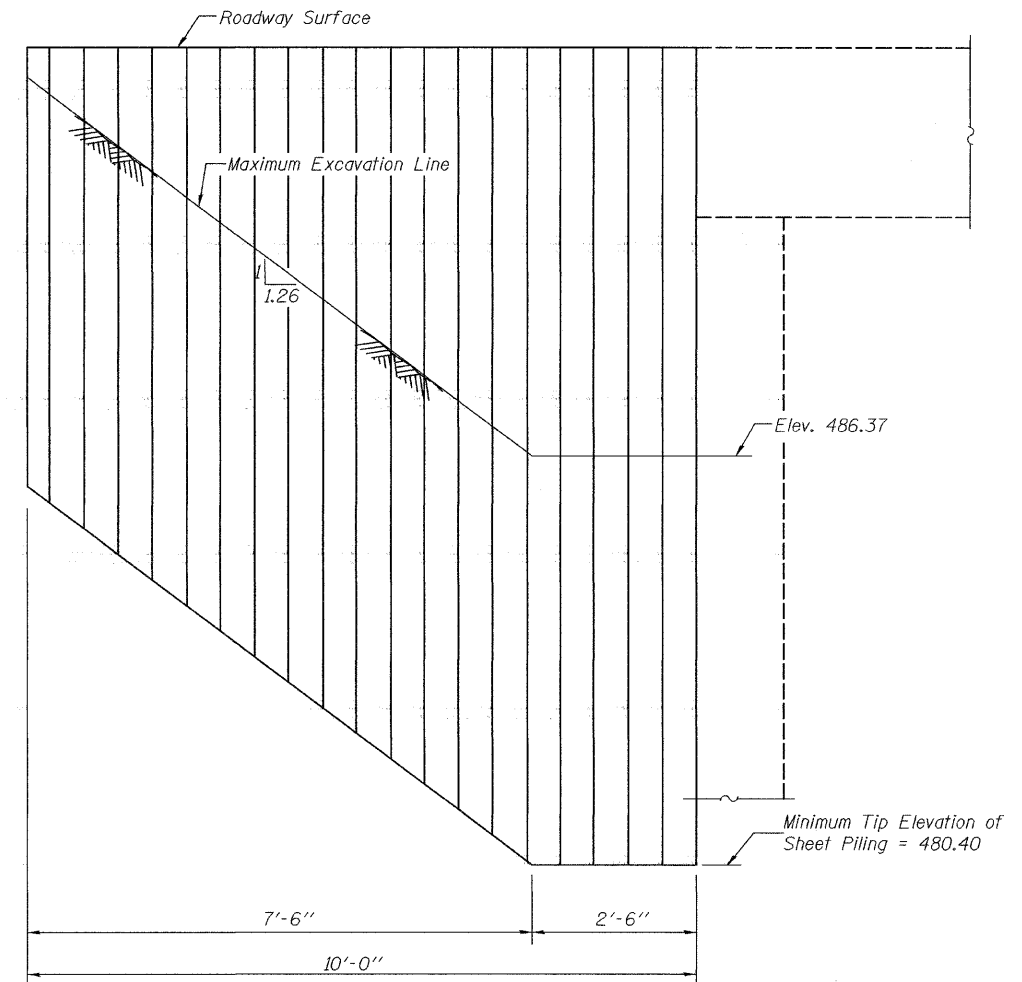
**STAGE I CONSTRUCTION**



**STAGE II REMOVAL**



**STAGE II CONSTRUCTION**



**TEMPORARY SHEET PILING**

Dimensions parallel to  $\varnothing$  of Roadway

If the Contractor chooses to alter the temporary cantilevered sheet piling design requirements shown on the plans, a design submittal including plan details and calculations will be required for review and acceptance by the Engineer.

Notes:

All cross sections are looking South.  
The removal of the existing bituminous wearing surface and the bridge rail is included in the Removal of Existing Superstructures.

DESIGNED	Patrick M. Petrone
CHECKED	Jay D. Edwards
DRAWN	BECKY M. LEACH
CHECKED	PMP/JDE

EXAMINED	Thomas J. Damagalki	July 22, 2008
PASSED	Ralph E. Anderson	

**STAGE CONSTRUCTION DETAILS**  
F.A.P. ROUTE 322 - SECTION 12-1, BR  
UNION CO.  
STATION 801+60.00  
STRUCTURE NO. 091-0022