

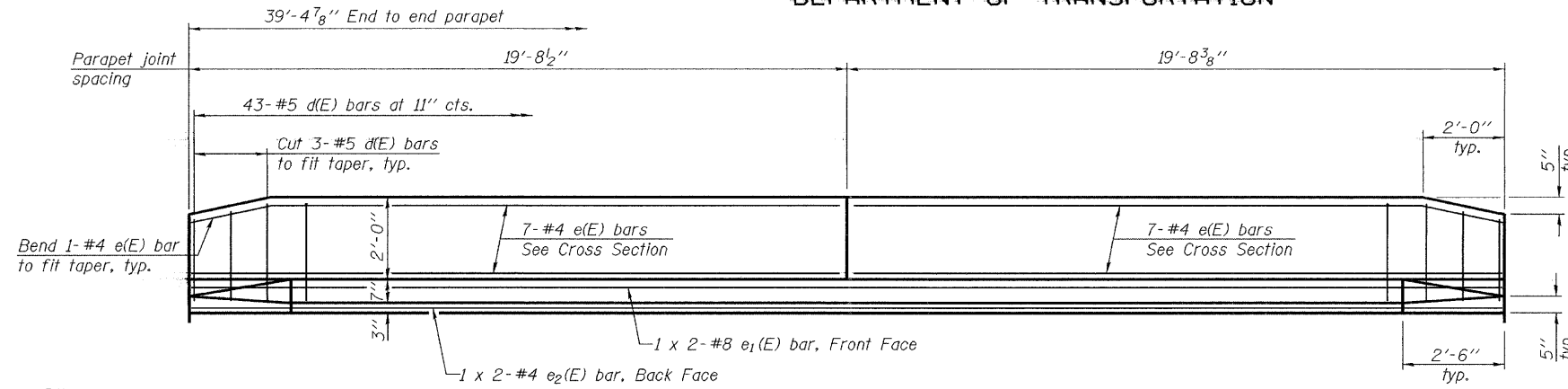
STATE OF ILLINOIS
DEPARTMENT OF TRANSPORTATION

ROUTE NO.	SECTION	COUNTY	TOTAL SHEETS	SHEET NO.	SHEET NO. 10 20 SHEETS
F.A.P. 322	12-1. BR	UNION	36	26	
FED. ROAD DIST. NO. 7	ILLINOIS	FED. AID PROJECT			

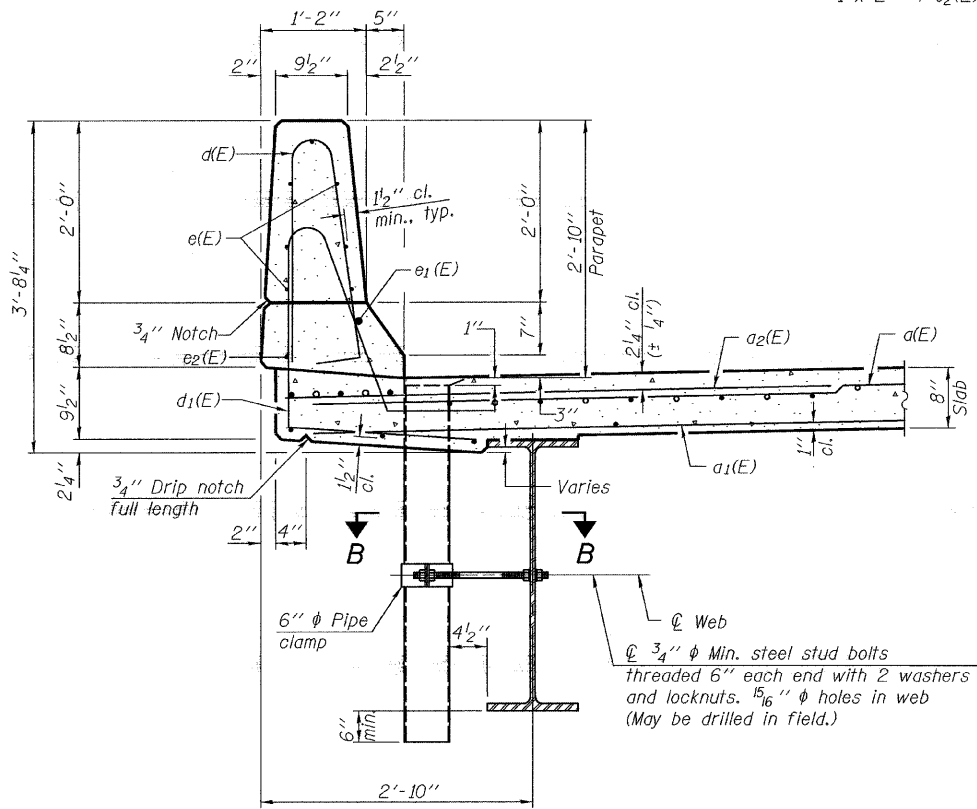
Contract #98886

MINIMUM BAR LAP

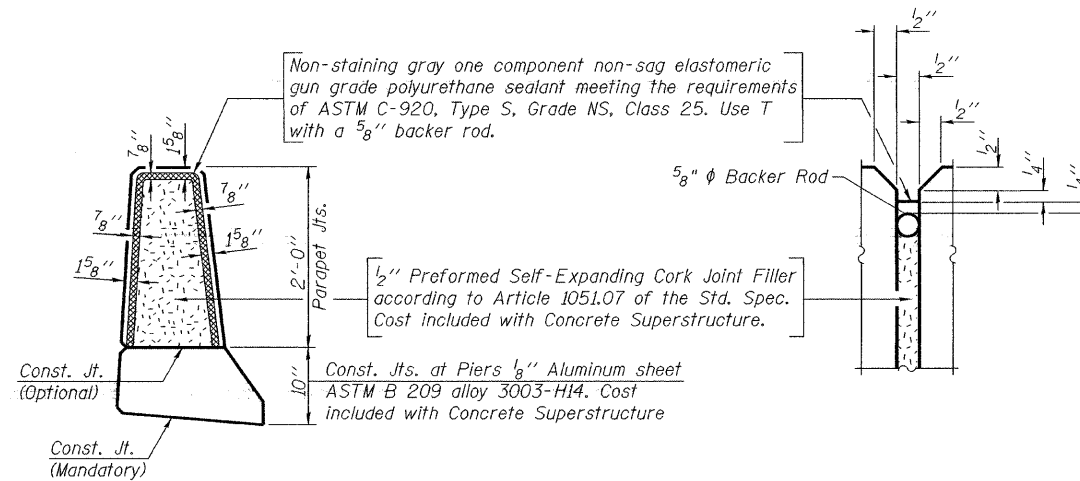
- #4 bar = 1'-8"
- #5 bar = 2'-2"
- #8 bar = 3'-5"



INSIDE ELEVATION OF PARAPET

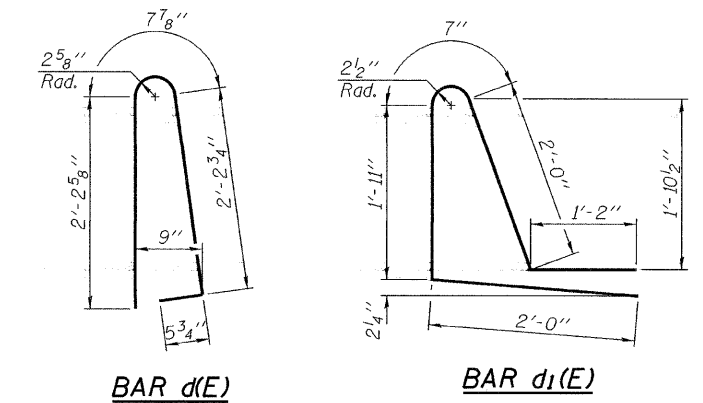


SECTION THRU PARAPET



PARAPET JOINT DETAILS

Notes:
The exterior surfaces of the floor drains shall be painted with the finish coat as specified in the special provisions for Cleaning and Painting New Metal Structures. The exterior surfaces of the drains shall be cleaned according to Steel Structures Painting Council's Spec. SSPC-SPI prior to painting.
Fiberglass pipe shall conform to ASTM D 2996, with short-time rupture strength hoop tensile stress of 30,000 p.s.i. minimum.

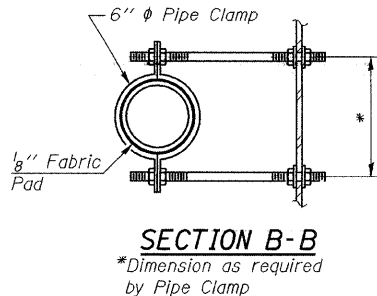


BAR d(E) BAR d1(E)

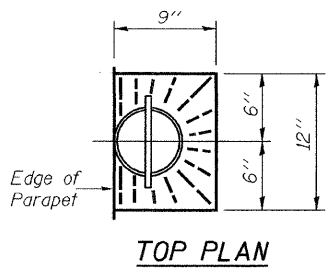
**SUPERSTRUCTURE
BILL OF MATERIAL**

Bar	No.	Size	Length	Shape
d(E)	172	#5	21'-3"	—
a1(E)	106	#5	20'-9"	—
a2(E)	90	#6	4'-6"	—
a3(E)	8	#5	27'-0"	—
b(E)	92	#5	21'-4"	—
b1(E)	126	#5	15'-0"	—
d(E)	86	#5	5'-7"	⌋
d1(E)	86	#5	7'-8"	⌋
e(E)	28	#4	19'-5"	—
e1(E)	4	#8	21'-4"	—
e2(E)	4	#4	20'-9"	—
m(E)	12	#6	3'-3"	—
m1(E)	36	#6	12'-0"	—
Reinforcement Bars, Epoxy Coated			Pound	13,500
Concrete Superstructure			Cu. Yds.	68.9

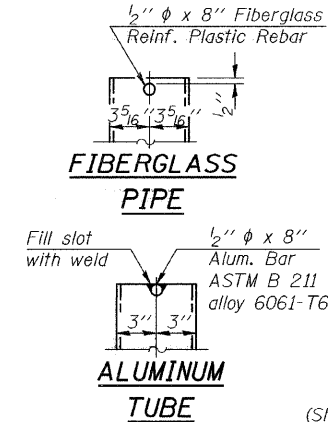
Bars indicated thus 1 x 2-#5 etc. indicates 1 line of bars with 2 lengths per line.



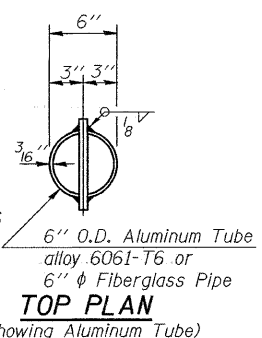
SECTION B-B
*Dimension as required by Pipe Clamp



TOP PLAN



FIBERGLASS PIPE



ALUMINUM TUBE

TOP PLAN
(Showing Aluminum Tube)

SUPERSTRUCTURE DETAILS
F.A.P. ROUTE 322 - SECTION 12-1. BR
UNION CO.
STATION 801+60.00
STRUCTURE NO. 091-0022

DESIGNED Patrick M. Petrone
CHECKED Jay D. Edwards
DRAWN BECKY M. LEACH
CHECKED PMP/JDE

July 22, 2008
EXAMINED Thomas J. Domagala
PASSED Ralph E. Anderson

S-I-D 9-3-07