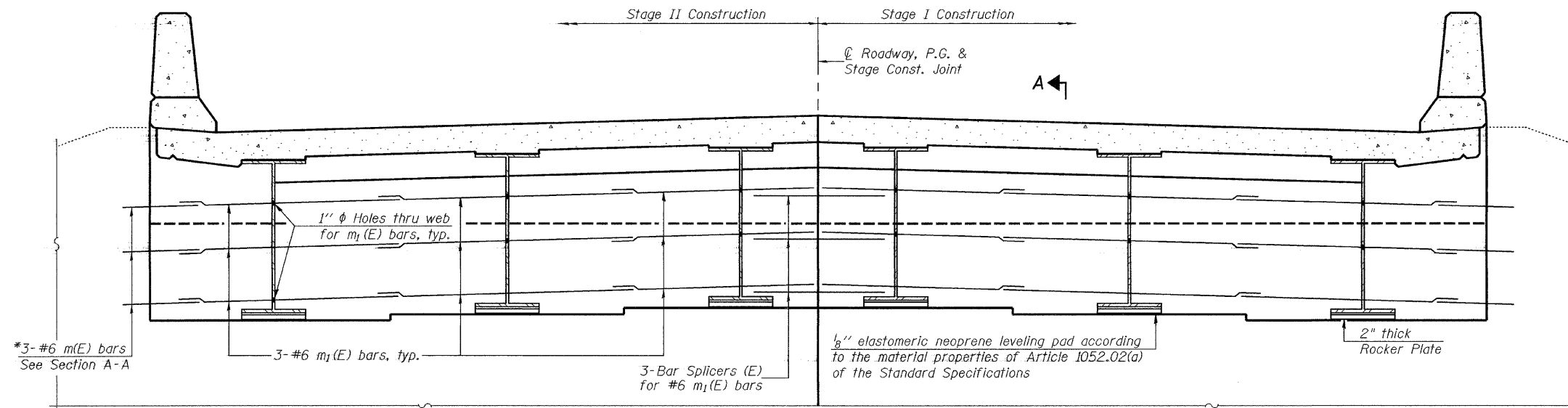


STATE OF ILLINOIS  
DEPARTMENT OF TRANSPORTATION

ROUTE NO.	SECTION	COUNTY	TOTAL SHEETS	SHEET NO.	SHEET NO. 11 20 SHEETS
F.A.P. 322	12-1, BR	UNION	36	27	
FED. ROAD DIST. NO. 7	ILLINOIS	FED. AID PROJECT-			

Contract #98886



\*3-#6 m(E) bars  
See Section A-A

\*m(E) bars shall be epoxy grouted into 9" deep holes as per Section 584 of the Standard Specifications.

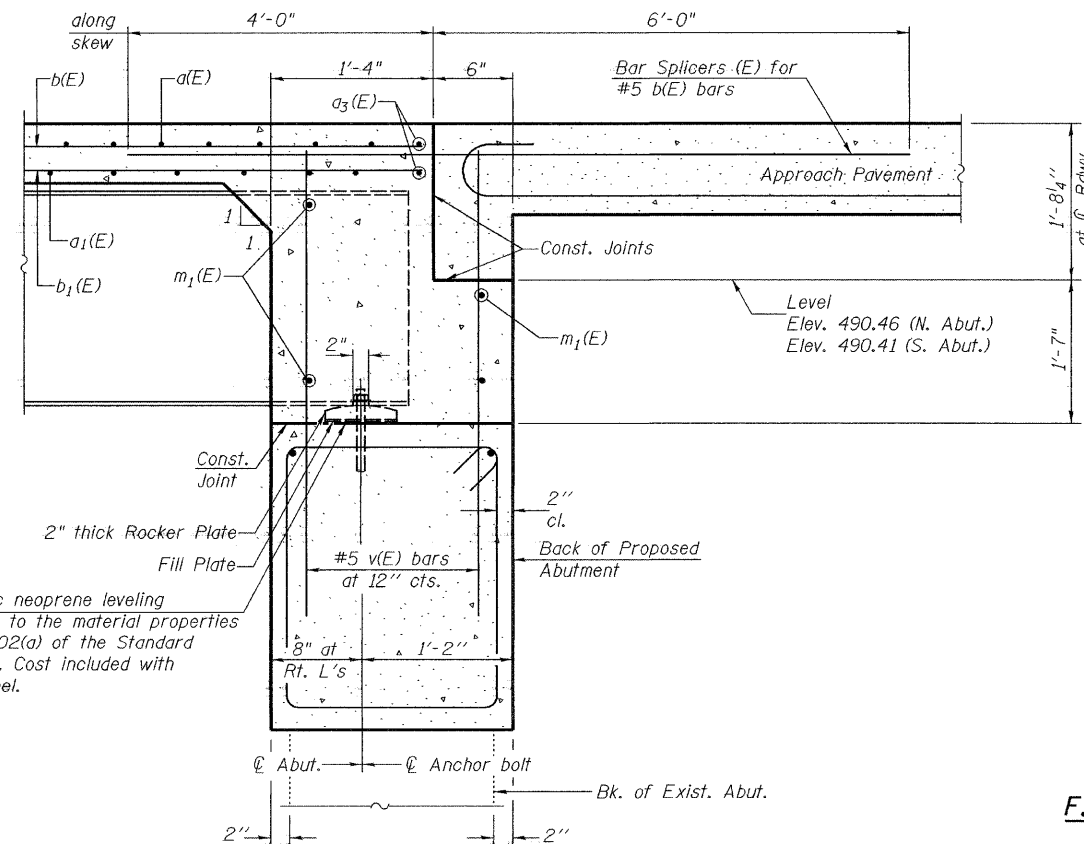
**DIAPHRAGM ELEVATION AT ABUTMENT**

**Notes:**

Reinforcement bars in diaphragm are billed with superstructure on sheet 10 of 20.  
Concrete in diaphragm is included with Concrete Superstructure on sheet 10 of 20.

**MIN. BAR LAP**

#6 bar = 2'-6"



1/8" elastomeric neoprene leveling pad according to the material properties of Art. 1052.02(a) of the Standard Specifications. Cost included with Structural Steel.

**SECTION A-A**

Dimensions at right angles to abutment, except as shown.

**DIAPHRAGM DETAILS**  
F.A.P. ROUTE 322 - SECTION 12-1, BR  
UNION CO.  
STATION 801+60.00  
STRUCTURE NO. 091-0022

DESIGNED	Patrick M. Petrone	EXAMINED	Thomas J. Domagala
CHECKED	Jay D. Edwards	PASSED	Ralph E. Anderson
DRAWN	BECKY M. LEACH		
CHECKED	PMP/JDE		

July 22, 2008  
ENGINEER OF BRIDGE DESIGN  
ENGINEER OF BRIDGES AND STRUCTURES

SI-DS2

9-3-07