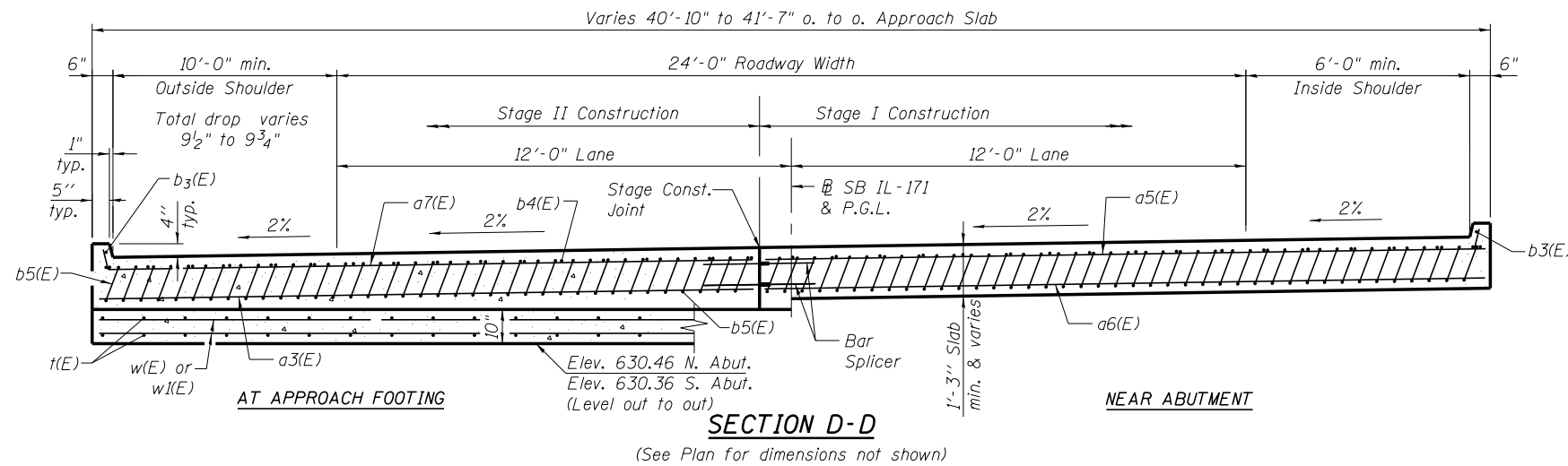


NOTES:

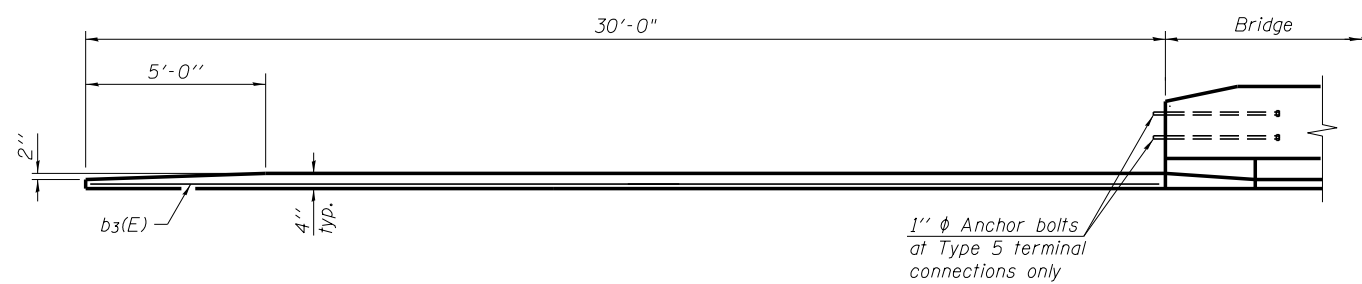
1. See sheet SA21 for Detail A and View B-B.
2. Approach slab concrete shall be paid for as Concrete Superstructure.
3. Approach footing concrete shall be paid for as Concrete Structures.
4. Reinforcement shall be paid for as Reinforcement Bars, Epoxy Coated.
5. For v(E) bar details, see sheet SA15.
6. The approach footing maximum applied service bearing pressure (Qmax) = 2.0 ksf.
7. For bar splicer details, see sheet SA40.
8. Cost of excavation for approach footing included with Concrete Structures.
9. For Granular Backfill for Structures and drainage treatment details, see sheet SA2.



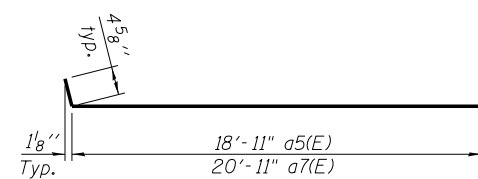
- * Tilt #9 b5(E) bars as required to maintain clearance.
- ** Cost included with Concrete Superstructure.

**TWO APPROACHES
BILL OF MATERIAL**

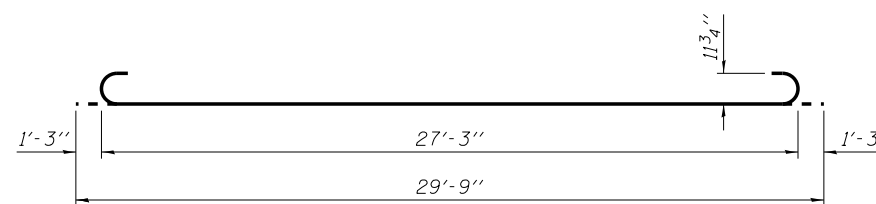
Bar	No.	Size	Length	Shape
a5(E)	50	#4	19'-4"	┌───┐
a6(E)	92	#5	18'-11"	┌───┐
a7(E)	50	#4	21'-4"	┌───┐
a8(E)	92	#5	20'-11"	┌───┐
b3(E)	4	#4	29'-8"	┌───┐
b4(E)	70	#4	29'-8"	┌───┐
b5(E)	202	#9	29'-8"	┌───┐
t(E)	176	#4	9'-8"	┌───┐
w(E)	80	#5	18'-11"	┌───┐
w1(E)	80	#5	20'-11"	┌───┐
Concrete Superstructure			Cu. Yd.	116.7
Concrete Structures			Cu. Yd.	25.5
Reinforcement Bars, Epoxy Coated			Pound	31610
Bridge Deck Grooving			Sq. Yd.	270
Protective Coat			Sq. Yd.	352



VIEW E-E



BAR a5(E) & a7(E)



BAR b5(E)

benesch
engineers · scientists · planners
Alfred Benesch & Company
205 North Michigan Avenue, Suite 2400
Chicago, Illinois 60601
312-565-0450 Job No. 10093

FILE NAME =	USER NAME = tjenicke	DESIGNED - JOB	REVISED -
0161000_60J16_022_apps1abdet-2.SB.dgn		CHECKED - RMM	REVISED -
	PLOT SCALE =	DRAWN - MAK	REVISED -
	PLOT DATE = 12/20/2012	CHECKED - RMM	REVISED -

**STATE OF ILLINOIS
DEPARTMENT OF TRANSPORTATION**

**BRIDGE APPROACH SLAB DETAILS (2 OF 2)
STRUCTURE NO. 016-1000/1001**

SHEET NO. SA22 OF SA40 SHEETS

F.A.P. RTE.	SECTION	COUNTY	TOTAL SHEETS	SHEET NO.
372	2013-038B-R	COOK	821	270
			CONTRACT NO. 60J16	
ILLINOIS FED. AID PROJECT				

X:\1000005\100093\Eng_Docs_Phase_1\1\SN_016_1000_1001_1st_Ave_over_47th_St\Final\0161000_60J16_022_apps1abdet-2.SB.dgn 2:28:11 PM 6/23/2014