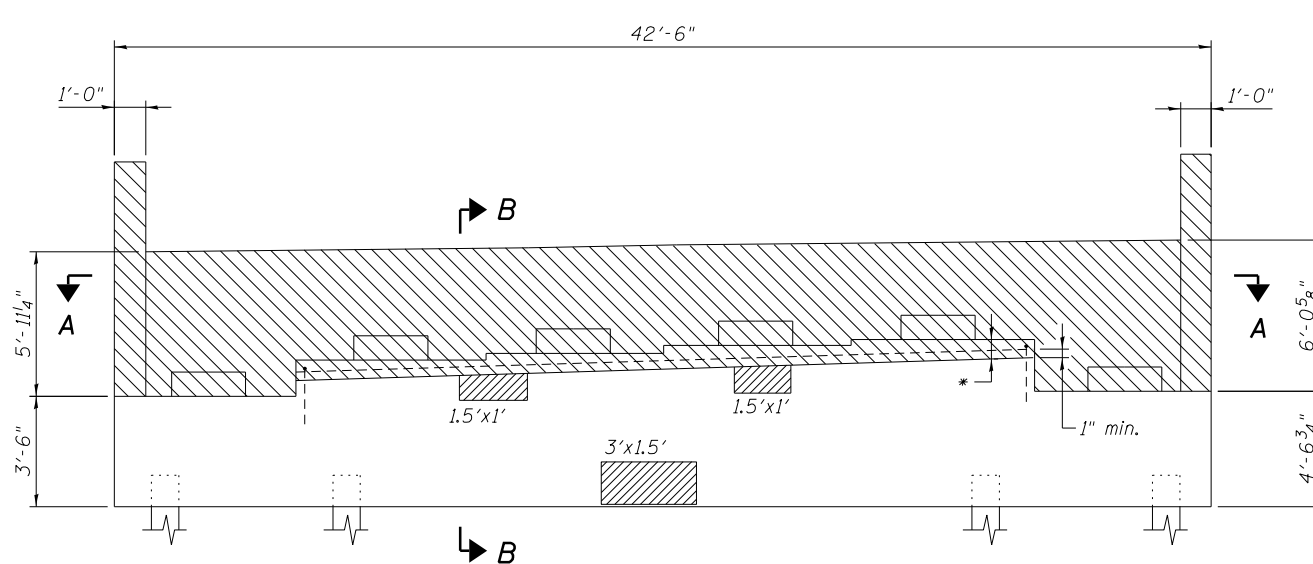
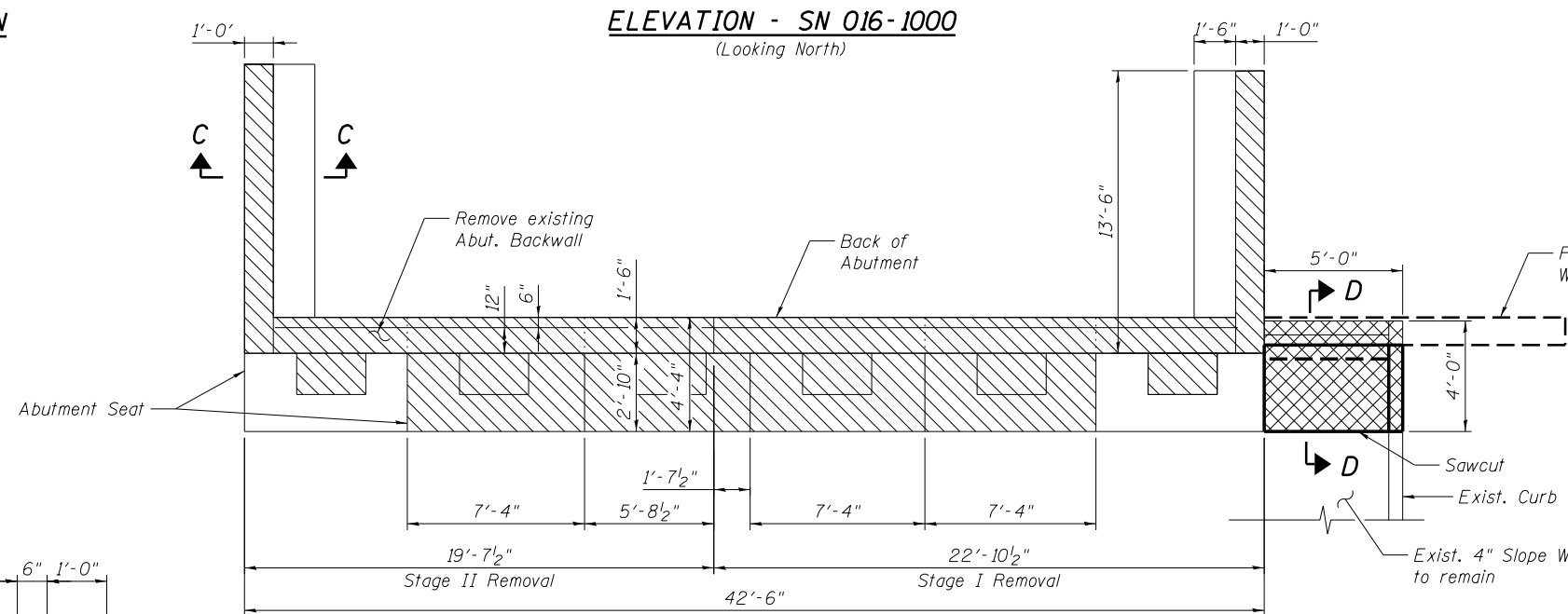


TYPICAL WINGWALL ELEVATION

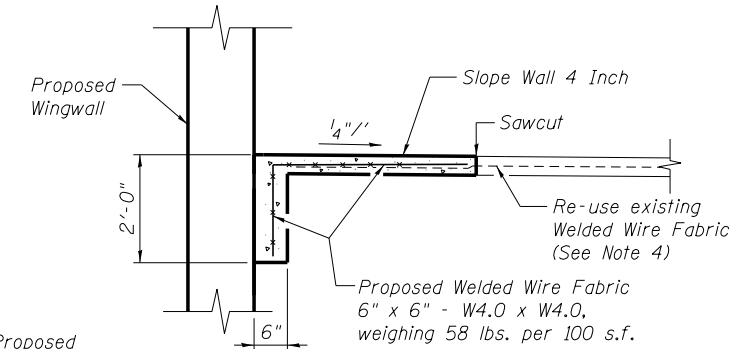


ELEVATION - SN 016-1000
(Looking North)



SECTION A-A

* 3" below abutment seat or 1" min. below existing transverse reinforcement; whichever is greater. Existing exposed reinforcement shall be cleaned and incorporated into the new construction. Cost included with concrete removal.



SECTION D-D

LEGEND

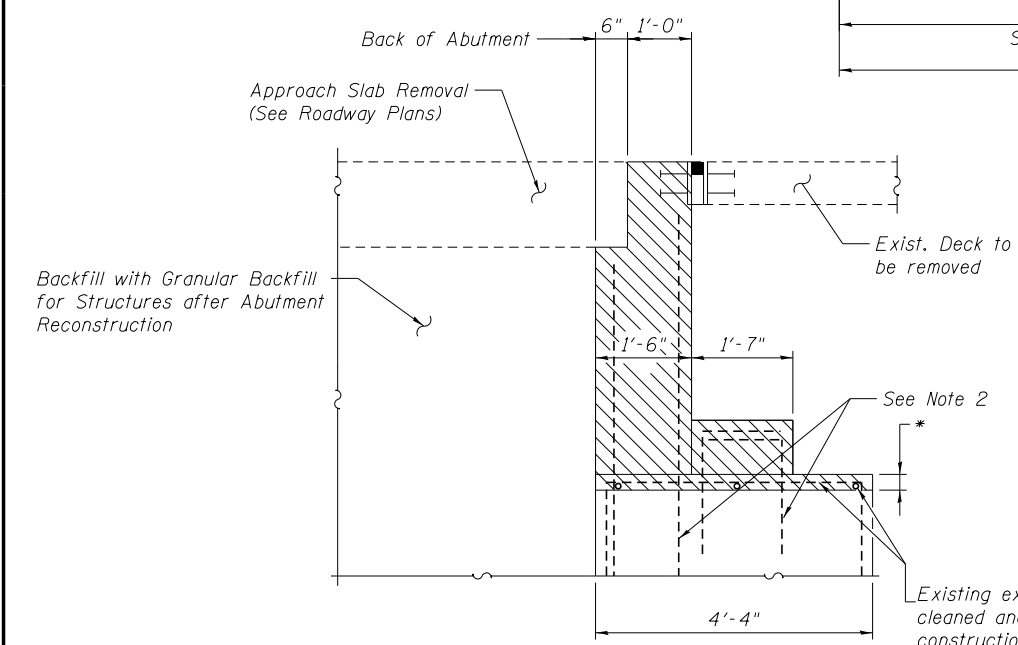
- Concrete Removal
- Structural Repair of Concrete (Depth Equal to or Less Than 5 Inches)
- Slope Wall Removal (See Note 4)

NOTES:

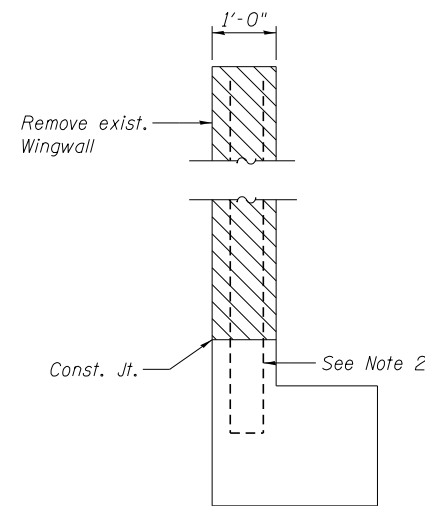
1. Actual quantities of repairs shall be approved by the Engineer.
2. Existing vertical reinforcement shall be cut flush with the the concrete removal surface, except as noted. Cost included with "Concrete Removal".
3. See Sheet SA2 for Pay Limits of "Structure Excavation".
4. Replace Slope Wall in-kind up to front face of Proposed Wingwall. Re-use existing Welded Wire Fabric. Cost to re-use fabric is included with "Slope Wall 4 inch".

BILL OF MATERIAL

ITEM	UNIT	TOTAL
Structure Excavation	Cu. Yd.	98
Granular Backfill for Structures	Cu. Yd.	96
Concrete Removal	Cu. Yd.	27.3
Structural Repair of Concrete (Depth Equal to or Less Than 5 Inches)	Sq. Ft.	8
Slope Wall Removal	Sq. Yd.	2
Slope Wall 4 inch	Sq. Yd.	2



SECTION B-B



SECTION C-C

benesch
engineers · scientists · planners
Alfred Benesch & Company
205 North Michigan Avenue, Suite 2400
Chicago, Illinois 60601
312-565-0450 Job No. 10093

FILE NAME =	USER NAME = tjenicke	DESIGNED - RMM	REVISED -
0161000_60J16_029_NAButRepair_SB.dgn	PLOT SCALE =	CHECKED - DJM	REVISED -
	PLOT DATE = 12/20/2012	DRAWN - MAK	REVISED -
		CHECKED - RMM	REVISED -

STATE OF ILLINOIS
DEPARTMENT OF TRANSPORTATION

NORTH ABUTMENT CONCRETE REMOVAL AND REPAIR DETAILS
STRUCTURE NO. 016-1000/1001

F.A.P. RTE.	SECTION	COUNTY	TOTAL SHEETS	SHEET NO.
372	2013-038B-R	COOK	821	277
CONTRACT NO. 60J16			ILLINOIS FED. AID PROJECT	

SHEET NO. SA29 OF SA40 SHEETS

X:\1000005\100093\Eng_Docs_Phase_1\11\SN_016_1000_1001_1st_Ave_over_47th_St\Final\0161000_60J16_029_NAButRepair_SB.dgn 6/23/2014 2:28:17 PM