

Total drop varies 1'-6 1/4" at Pier 39 (measured at C Pier and Ramp E)

MINIMUM LAP

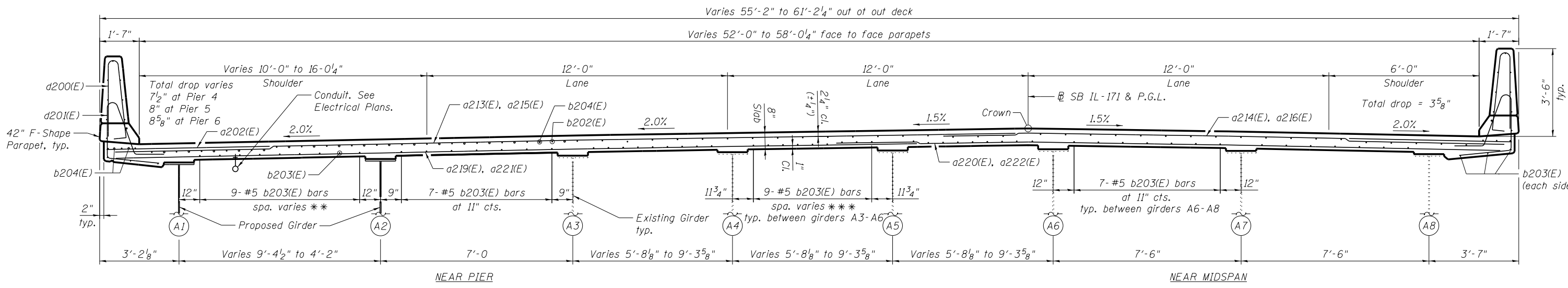
(Slab and Parapet)
#5 bar = 3'-3"
#6 bar = 3'-10"

- NOTES:**
- For Superstructure Details and Bar Bends, see Sheet SD45.
 - For Bill of Material, see Sheet SD46.
 - Barrier widths are measured perpendicular from the edge of deck. Overhang widths are measured perpendicular from the fascia girders. Girder spacings are measured perpendicular from the east girder to the west girder at the centerline of bearing. All remaining deck dimensions are measured perpendicular to the baseline shown unless noted otherwise.
- △ Linear slope transition from 6.2% at Sta. 201+25.00 to 2.2% at Sta. 200+46.84. See Sheet SD19.
- △△ Cross slope varies in gore from Sta. 55+75.25 to Sta. 56+22.75. See Sheet SD19.
- △△△ Measured perpendicular to SB IL-171.

- * 11" at Pier 39
9 1/4" at Pier 7
- ** 11" at Pier 4
7 1/4" at Pier 6
- *** 11" at Pier 4
5 5/8" at Pier 7

DECK CROSS SECTION B-B

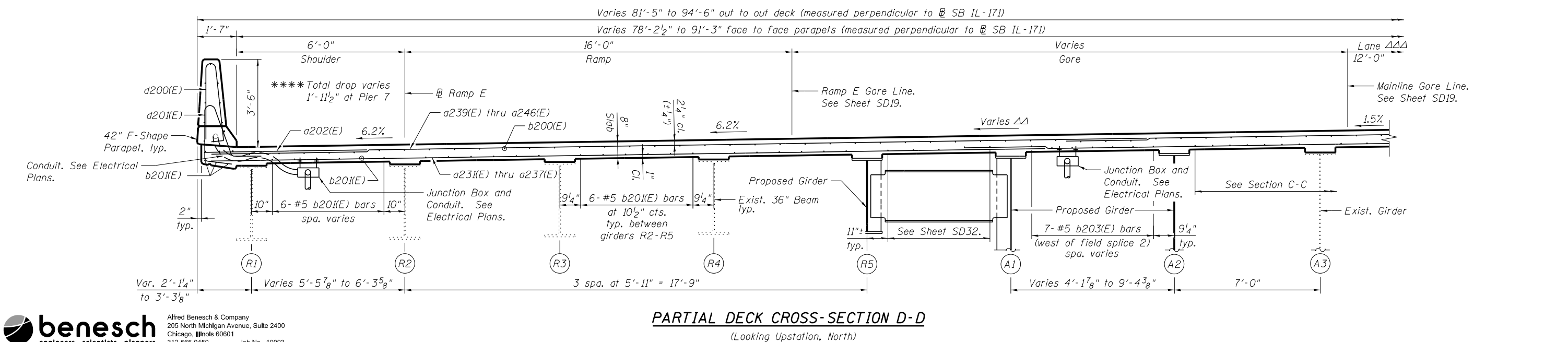
(Looking Downstation, North)



DECK CROSS SECTION C-C

(Looking Upstation, North)

*** Measured from SB IL-171 & P.G.L.



PARTIAL DECK CROSS-SECTION D-D

(Looking Upstation, North)



Alfred Benesch & Company
205 North Michigan Avenue, Suite 2400
Chicago, Illinois 60601
312-565-0450 Job No. 10093

FILE NAME =	USER NAME = ksnider	DESIGNED - AWH	REVISED -
0162457.60J16.033.Deck.Section.Unrt.A.dgn		CHECKED - MFH	REVISED -
	PLOT SCALE =	DRAWN - RMG/KMS	REVISED -
	PLOT DATE = 12/20/2013	CHECKED - MFH	REVISED -

**STATE OF ILLINOIS
DEPARTMENT OF TRANSPORTATION**

**DECK CROSS SECTION UNIT A
STRUCTURE NO. 016-2457**

SHEET NO. SD33 OF SD83 SHEETS

F.A.P. RT.	SECTION	COUNTY	TOTAL SHEETS	SHEET NO.
372	2013-038B-R	COOK	821	408
				CONTRACT NO. 60J16
ILLINOIS FED. AID PROJECT				