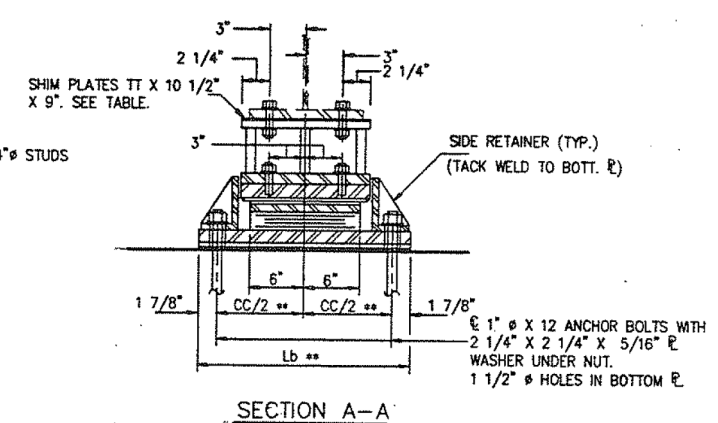
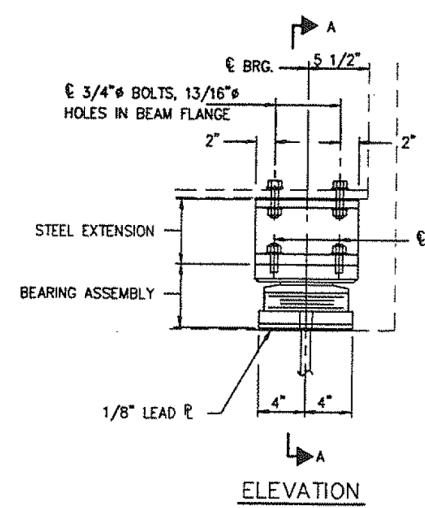
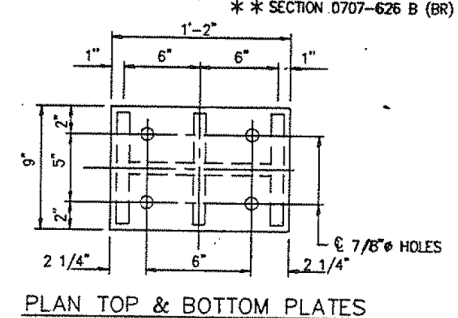


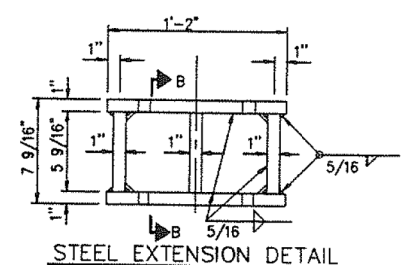
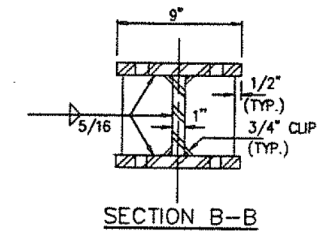
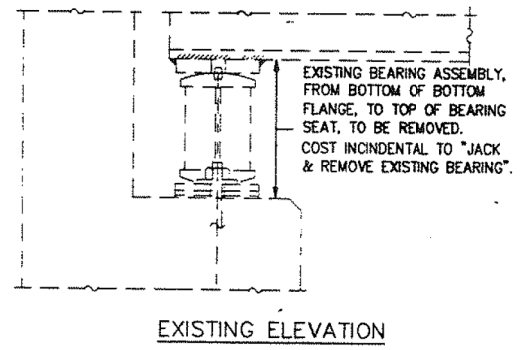
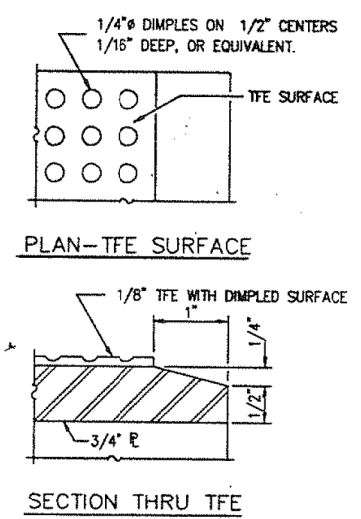
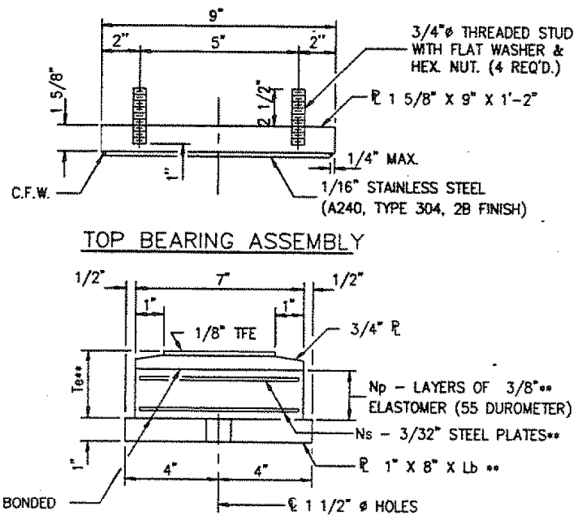
ROUTE NO.	SECTION	COUNTY	TOTAL SHEETS	SHEET NO.
IL 171	**	COOK	255	250
ILLINOIS			FED. AID PROJECT	



NOTES: DIAPHRAGM REMOVAL AND REPLACEMENT MAY BE REQUIRED TO FACILITATE DRILLING HOLES IN THE BOTTOM FLANGE FOR BEARING ATTACHMENT. COST IS INCIDENTAL TO "FURNISHING AND ERECTING STRUCTURAL STEEL".  
 NEW STEEL EXTENSIONS, SIDE RETAINERS, LEAD PLATES, CONNECTION BOLTS AND ANCHOR BOLTS ARE INCLUDED IN "FURNISHING AND ERECTING STRUCTURAL STEEL".  
 SEE SHEET S2 OF S2 FOR ANCHOR BOLT INSTALLATION.  
 BEFORE INSTALLING THE NEW BEARING, THE TOP PLATE OF THE EXISTING BEARING ASSEMBLY SHALL BE REMOVED FROM THE BOTTOM FLANGE USING THE AIR-ARC METHOD. GRIND SMOOTH ALL WELD MATERIAL REMAINING ON THE BOTTOM FLANGE. BURN EXISTING ANCHOR BOLTS FLUSH WITH EXISTING CONCRETE SURFACE. GRIND EXISTING ANCHOR BOLT SMOOTH AND SEAL WITH EPOXY. COST IS INCIDENTAL TO FURNISHING AND ERECTING STRUCTURAL STEEL.  
 TRAFFIC SHALL BE REMOVED FROM THE PORTION OF THE STRUCTURE TO BE JACKED PRIOR TO COMMENCING JACKING OPERATIONS. TRAFFIC SHALL BE KEPT OFF THAT PORTION OF THE STRUCTURE DURING THE ENTIRE BEARING REPLACEMENT OPERATION. DIFFERENTIAL JACKING HEIGHT NOT TO EXCEED 1/8" TRANSVERSELY BETWEEN ADJACENT BEAMS OR 1/4" LONGITUDINALLY BETWEEN ADJACENT SUPPORTS.  
 PRIOR TO ORDERING ANY MATERIAL, THE CONTRACTOR SHALL VERIFY IN THE FIELD ALL BEARING HEIGHT AND SHIM DIMENSIONS.  
 SEE SUPER STRUCTURE OVERLAY & REPAIR PLANS FOR BEAM LOCATIONS.



TYPE II TFE ELASTOMERIC EXP. BRG.

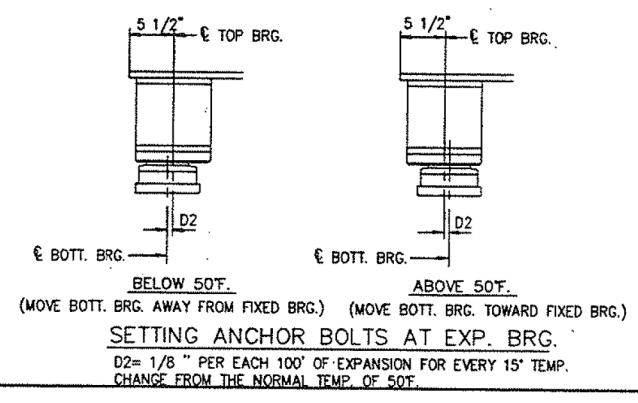
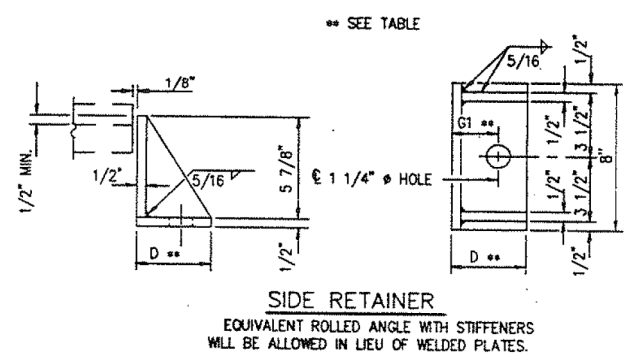


LOCATION BEAM	DIM.	SHIM $\varnothing$ THICKNESS, TT: *			
		EAST BOUND		WEST BOUND	
		PIER 7 WEST	WEST ABUTMENT	BEAM	PIER 18 WEST
B1 (IN.)	0	0	1/2	B7	1/2
B2 (IN.)	0	0	1/2	B8	1/2
B3 (IN.)	0	0	1/2	B9	13/16
B4 (IN.)	3/4	1 1/4	1	B10	1
B5 (IN.)	1/8	5/8	1/2	B11	1/2
B6 (IN.)	0	1/2	1/2	B12	1/2
REACTIONS					
DL (K)	14.6	15.7		20.2	
LL (K)	34.0	34.0		33.0	
IMP (K)	10.0	10.0		9.0	
TOTAL (K)	58.6	59.7		62.2	
VARIABLE DIMENSIONS:					
BEARING TYPE	7x12, II, C	7x12, II, B		7x12, II, B	
Np (IN.)	5	4		4	
Ns (IN.)	4	3		3	
Te (IN.)	3 1/8	2 5/8		2 5/8	
CC (IN.)	18 1/2	19 1/4		18 1/2	
Lb (IN.)	22 1/4	23		22 1/4	
G1 (IN.)	2 1/8	2 1/2		2 1/8	
D (IN.)	4	4 3/8		4	

\* IN ADDITION TO 1/8" SHIMS TO BE PROVIDED @ ALL BEARING LOCATIONS.

\*\* SEE TABLE  
 NOTE: THE 1/8" TFE SHEET SHALL BE BONDED DIRECTLY TO THE TOP STEEL PLATE WITH A TWO-COMPONENT, MEDIUM VISCOSITY EPOXY RESIN, CONFORMING TO THE REQUIREMENTS OF THE FEDERAL SPECIFICATION MMM-A-134, TYPE I. THE BOND AGENT SHALL BE APPLIED ON THE FULL AREA OF THE CONTACT SURFACES.  
 BONDING OF 1/8" TFE SHEET DURING VULCANIZING PROCESS WILL BE PERMITTED PROVIDED THE PROCESS AND METHOD OF ADJUSTING ASSEMBLY HEIGHT IS APPROVED BY THE ENGINEER.

EXAMINED	19
PASSED	ENGINEER OF BRIDGE DESIGN
APPROVED	ENGINEER OF BRIDGES AND STRUCTURES
	DIRECTOR OF HIGHWAYS



ITEM	UNIT	TOTAL
ELASTOMERIC BEARING ASSEMBLY TYPE II	EACH	18
JACK & REMOVE EXISTING BEARINGS	EACH	18
FURNISH & ERECT STRUCTURAL STEEL	LBS	3410'

ILLINOIS DEPARTMENT OF TRANSPORTATION  
 PIER 7 WEST, WEST ABUTMENT (EAST BOUND), PIER 18 WEST  
 7 X 12, TYPE II BEARINGS  
 BRIDGE REPAIRS  
 1ST AVE (IL 171) S.N. 016-0486 & 016-0487  
 OVER SANITARY & SHIP CANAL AND RAMP "E"  
 F.A.U. RT. 1505 SECTION 0707-626 B (BR)  
 COOK CO. IL STA. 30+72.59  
 STA. 35+12.88

FILE NAME =	USER NAME = tjenicke	DESIGNED - FSM	REVISED -
0160486.60J16.X47.exist.93.br.gll.dgn	PLOT SCALE =	CHECKED - RMM	REVISED -
	PLOT DATE = 6/23/2014	DRAWN - FSM	REVISED -
		CHECKED - RMM	REVISED -

FOR INFORMATION ONLY				
F.A.P. RTE.	SECTION	COUNTY	TOTAL SHEETS	SHEET NO.
373	2013-038B-R	COOK	821	737
ILLINOIS FED. AID PROJECT			CONTRACT NO. 60J16	

X:\1000005\10093\Eng\_Docs\_Phase\_1\11\SN\_016\_0486\_0487\_1st\_Ave\_cover\_Conc\Final\Final\_0486\0160486\_60J16.X47.exist.93.br.gll.dgn 3:01:29 PM 6/23/2014