

LEGEND

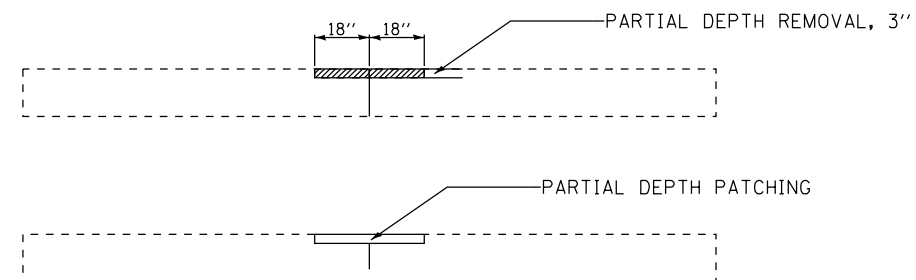
- ① EXISTING P.C.C PAVEMENT, 10"
- ② EXISTING STABILIZED SUB-BASE, 4"
- ③ EXISTING COMB. CONCRETE CURB & GUTTER, TYPE M-2.12
- ④ EXISTING CONCRETE MEDIAN TYPE SM-2.12 OR SB-9.12
- ⑤ EXISTING STABILIZED MEDIAN SURFACE, 12"
- ⑥ EXISTING COMB. CONCRETE CURB & GUTTER, TYPE VARIES
- ⑦ P.C.C. SURFACE REMOVAL (VAR. DEPTH)
- ⑧ MEDIAN REMOVAL, PARTIAL DEPTH
- ⑨ PROPOSED POLYMERIZED LEVELING BINDER, IL-4.75 (MM), N50 (VAR. DEPTH)
- ⑩ PROPOSED POLYMERIZED LEVELING BINDER, IL-4.75 (MM), N50, 3/4"
- ⑪ PROPOSED POLYMERIZED HOT-MIX ASPHALT SURFACE COURSE, MIX "F", N90, 1 3/4"

NOTES:

1. COST OF REMOVAL OF PORTION OF P.C.C. CURB ABOVE GUTTER TO BE INCLUDED WITH MEDIAN REMOVAL, PARTIAL DEPTH. THE CONTRACTOR SHALL MATCH THE EXIST. ADJACENT PAVEMENT CROSS SLOPE FOR MEDIAN REMOVAL, PARTIAL DEPTH.
2. CORRUGATED MEDIAN EXISTS BETWEEN STA. 25+57 TO STA. 27+19; STA. 40+10 TO STA. 46+27; AND STA. 121+24 TO STA. 127+78 MEDIAN SHALL BE REMOVED UNTIL FLUSH WITH ADJACENT EXISTING PAVEMENT PRIOR TO RESURFACING.
3. EXIST. CONCRETE MEDIAN TYPE SB-9.12 FROM STA. 30+50 TO STA. 33+14 AND STA. 85+18 TO STA. 92+43 SHALL NOT BE REMOVED. CONTRACTOR SHALL ONLY OVERLAY THE GUTTER.

DETAIL A  
LONGITUDINAL JOINT REPAIR (TYP.)

(LOCATIONS TO BE DETERMINED BY ENGINEER)



HOT-MIXED ASPHALT MIXTURE REQUIREMENTS

MIXTURE TYPE	AIR VOIDS @ NDES	QMP
<u>PAVEMENT RESURFACING</u> POLYMERIZED HOT-MIX ASPHALT SURFACE COURSE, MIX "F", N90, (IL-9.5mm), 1 3/4" POLYMERIZED LEVELING BINDER (MACHINE METHOD), IL-4.75, N50, 3/4"	4% @ 90 GYR. 3.5% @ 50 GYR.	PFP QCP
<u>PARTIAL DEPTH PATCHING</u> HOT-MIX ASPHALT BINDER COURSE, IL-19.0, N70	4% @ 70 GYR.	QC/OA
<u>PATCHING</u> CLASS D PATCHES (HMA BINDER IL-19.0 MM) 10" HOT-MIX ASPHALT BINDER COURSE, IL-19.0, N70	4% @ 70 GYR. 4% @ 70 GYR.	QCP QC/OA
<u>DRIVEWAY</u> HOT-MIX ASPHALT BASE COURSE, (BINDER IL-19.0 mm), 8" HOT-MIX ASPHALT SURFACE COURSE, MIX "D", N50, (IL-9.5mm), 2"	4% @ 50 GYR. 4% @ 50 GYR.	QC/OA QC/OA
QMP DESIGNATION: QUALITY CONTROL/ QUALITY ASSURANCE (QC/OA); QUALITY CONTROL FOR PERFORMANCE (QCP)		

NOTES:

THE UNIT WEIGHT USED TO CALCULATE ALL HMA SURFACE MIXTURE QUANTITIES IS 112 LBS/SQ YD/IN.

THE "AC TYPE" FOR POLYMERIZED HMA MIXES SHALL BE "SBS/SBR PG 76-22" AND FOR NON-POLYMERIZED HMA THE "AC TYPE" SHALL BE "PG 64-22" UNLESS MODIFIED BY DISTRICT ONE SPECIAL PROVISIONS. FOR USE OF RECYCLED MATERIALS SEE DISTRICT ONE SPECIAL PROVISIONS.

QUALITY MANAGEMENT PROGRAM (QMP) COLUMN IDENTIFIES THE TYPE OF SPECIFICATION THAT APPLIES TO THE HMA MIXTURE