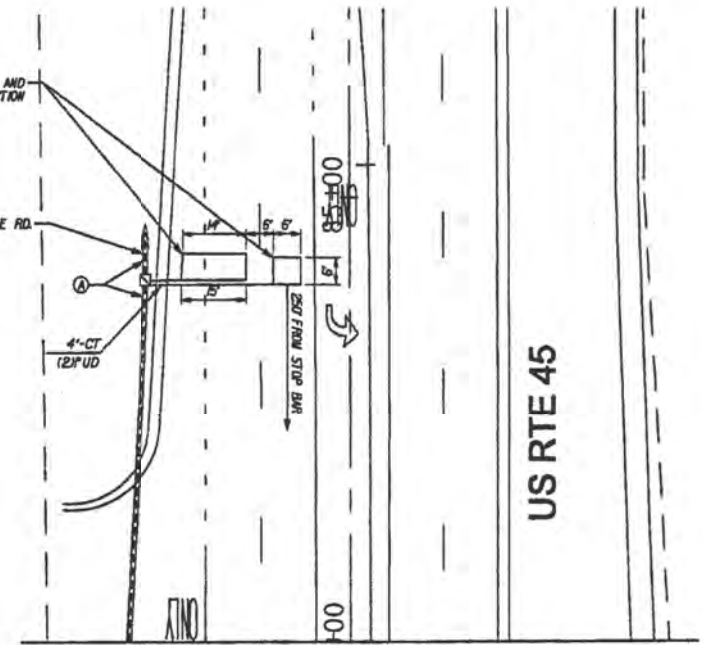
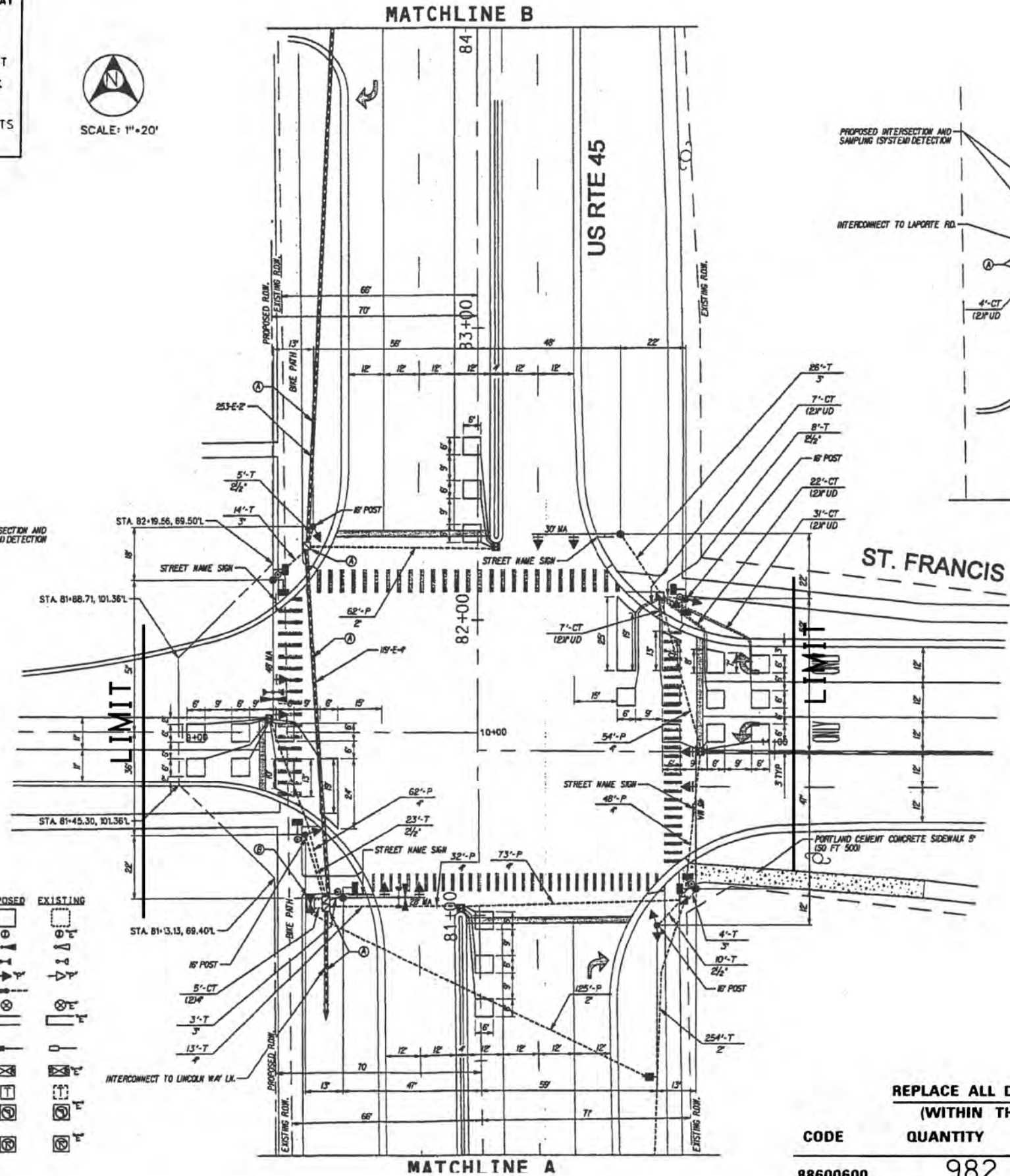
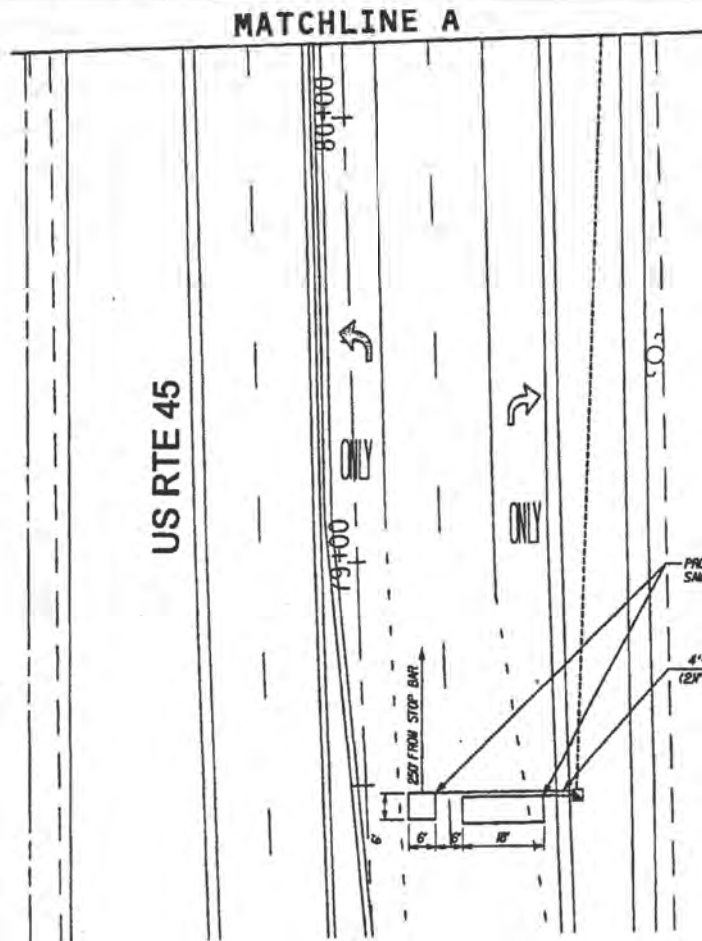


WORK SHALL MEET THE REQUIREMENTS OF THE SPECIAL PROVISION, "TRAFFIC SIGNAL SPECIFICATIONS FOR DETECTOR LOOP REPLACEMENT AND/OR INSTALLATION ON ROADWAY GRINDING, RESURFACING AND PATCHING OPERATIONS". SPECIAL ATTENTION MUST BE MADE TO THE SECTIONS "INSPECTION OF CONSTRUCTION" AND "DETECTOR LOOP REPLACEMENT" FOR INSTALLATION AND INSPECTION REQUIREMENTS. LOOP REPLACEMENT WORK THAT DOES NOT MEET THE CONTRACT REQUIREMENTS SHALL NOT BE PAID. WORK NECESSARY TO COMPLETE THE LOOP REPLACEMENT WORK MAY BE ASSIGNED BY THE ENGINEER TO IDOT'S ELECTRICAL MAINTENANCE CONTRACTOR (EMC); ALL RELATED COSTS WILL BE THE RESPONSIBILITY OF THE CONTRACTOR.



SCALE: 1"=20'

THIS PLAN IS FOR THE SOLE PURPOSE OF DETECTOR LOOP REPLACEMENTS ONLY



TRAFFIC SIGNAL LEGEND

PROPOSED	EXISTING	DESCRIPTION
		CONTROLLER
		SERVICE INSTALLATION
		SIGNAL HEAD
		SIGNAL HEAD WITH BACKPLATE
		SIGNAL HEAD, PEDESTRIAN
		SIGNAL POST
		MAST ARM ASSEMBLY AND POLE, STEEL
		MAST ARM ASSEMBLY AND POLE, ALUMINUM
		COMBINATION MAST ARM ASSEMBLY AND POLE, STEEL WITH LUMINAIRE
		UNIT DUCT
		COMMON TRENCH
		HANDHOLE
		HEAVY DUTY HANDHOLE
		DOUBLE HANDHOLE
		G.S. CONDUIT IN TRENCH OR PUSHED
		PEDESTRIAN PUSHBUTTON DETECTOR
		DETECTOR LOOP
		CAST IRON JUNCTION BOX
		EMERGENCY VEHICLE SYSTEM DETECTOR
		CONFIRMATION BEACON
		SIGNAL HEAD OPTICALLY PROGRAMMED
		CONDUIT SPLICE
		WOOD POLE
		RACEWAY FOR MAGNETIC DETECTOR, TYPE I OR TYPE II
		VEHICLE DETECTOR, NON COMPENSATED MAGNETIC TYPE
		RAILROAD CONTROL CABINET
		TELEPHONE CONNECTION
		ILLUMINATED SIGN, FIBER OPTIC "NO LEFT TURN"
		ILLUMINATED SIGN, FIBER OPTIC "NO RIGHT TURN"

REPLACE ALL DETECTOR LOOPS AS SHOWN (WITHIN THE RESURFACING LIMITS)

CODE	QUANTITY	UNIT	ITEM
88600600	982	FOOT	DETECTOR LOOP REPLACEMENT

FILE NAME :	USER NAME : osbornnp	DESIGNED -	REVISED -
ci:\pwork\p\d\osbornnp\10311016\015\612-shr-plan.dgn		DRAWN -	REVISED -
Default	PLOT SCALE = 100.049 / in.	CHECKED -	REVISED -
	PLOT DATE = 6/13/2014	DATE -	REVISED -

STATE OF ILLINOIS
DEPARTMENT OF TRANSPORTATION

DISTRICT ONE - DETECTOR LOOP REPLACEMENT
US RTE 45 (96th AVE/LA GRANGE Rd.) AT ST. FRANCIS RD

F.A. RTE.	SECTION	COUNTY	TOTAL SHEETS	SHEET NO.
330	104R1RS	WILL	26	14
CONTRACT NO. 60V09				
ILLINOIS FED. AID PROJECT				

SCALE: SHEET OF SHEETS STA. TO STA.