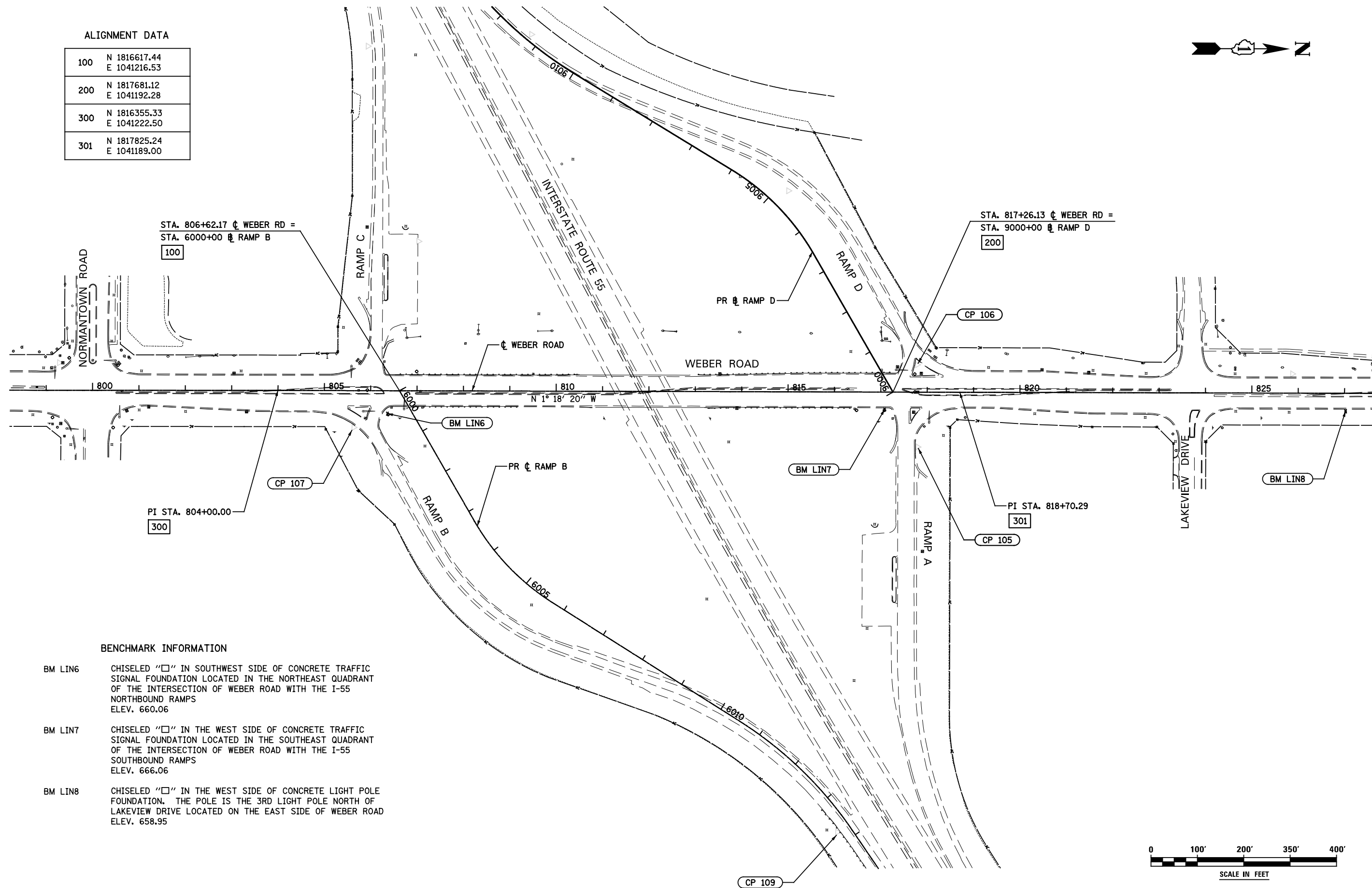


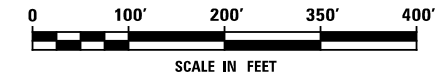
ALIGNMENT DATA

100	N 1816617.44 E 1041216.53
200	N 1817681.12 E 1041192.28
300	N 1816355.33 E 1041222.50
301	N 1817825.24 E 1041189.00



BENCHMARK INFORMATION

- BM LIN6** CHISELED "□" IN SOUTHWEST SIDE OF CONCRETE TRAFFIC SIGNAL FOUNDATION LOCATED IN THE NORTHEAST QUADRANT OF THE INTERSECTION OF WEBER ROAD WITH THE I-55 NORTHBOUND RAMP
ELEV. 660.06
- BM LIN7** CHISELED "□" IN THE WEST SIDE OF CONCRETE TRAFFIC SIGNAL FOUNDATION LOCATED IN THE SOUTHEAST QUADRANT OF THE INTERSECTION OF WEBER ROAD WITH THE I-55 SOUTHBOUND RAMP
ELEV. 666.06
- BM LIN8** CHISELED "□" IN THE WEST SIDE OF CONCRETE LIGHT POLE FOUNDATION. THE POLE IS THE 3RD LIGHT POLE NORTH OF LAKEVIEW DRIVE LOCATED ON THE EAST SIDE OF WEBER ROAD
ELEV. 658.95



FILE NAME = D:\6053-sh-01-ATB.dgn

USER NAME = 11ugo	DESIGNED LL	REVISED -
PLOT SCALE = 1:200.001	DRAWN KES	REVISED -
PLOT DATE = 7/16/2014	CHECKED PJO	REVISED -
	DATE 7/16/2014	REVISED -

STATE OF ILLINOIS
DEPARTMENT OF TRANSPORTATION

ALIGNMENT, BENCHMARK, & TIES
WEBER ROAD

SCALE: AS SHOWN SHEET NO. 1 OF 1 SHEETS STA. TO STA.

F.A.I. RTE.	SECTION	COUNTY	TOTAL SHEETS	SHEET NO.
55	(99-1HB-1)A	WILL	33	10
CONTRACT NO. 60Y53			ILLINOIS FED. AID PROJECT	