

OVERHEAD SIGN STRUCTURE

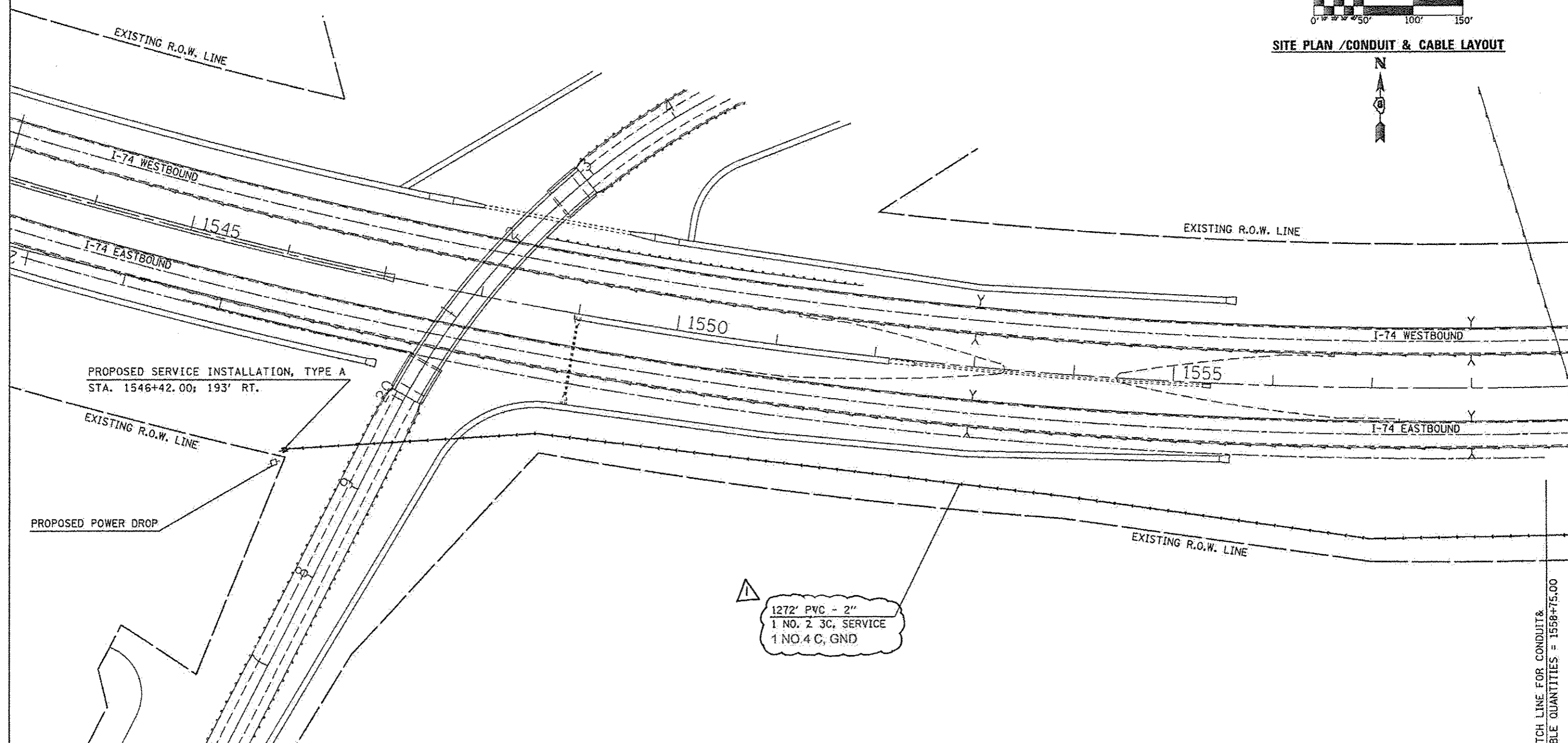
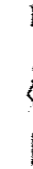
I-74 EB - MM 172.83

STRUCTURE NO.

5 S 010 1072 R172.83



SITE PLAN / CONDUIT & CABLE LAYOUT



MATCH LINE FOR CONDUIT & CABLE QUANTITIES = 1558+75.00

△ REVISED 9-4-14

| | | | | | | | | | | | | |
|--|-----------------------|------------|----------|---|---------------------------|-------|-------------|--------------|-----------|--------------|--------------------|--|
| FILE NAME : | USER NAME : enrlockjd | DESIGNED - | REVISD - | STATE OF ILLINOIS DEPARTMENT OF TRANSPORTATION | PLAN SHEET | | F.A.I. RTE. | SECTION | COUNTY | TOTAL SHEETS | SHEET NO. | |
| c:\pwworksp\enrlockjd\0348463\072026\shc\plan_09.dgn | 72026\shc\plan_09.dgn | DRAWN - | REVISD - | | FAI - 74 EB / MM 172.83 | | VAR. | FY2014 ITS-1 | CHAMPAIGN | 71 | 15 | |
| | | CHECKED - | REVISD - | | SCALE: | SHEET | OF | SHEETS | STA. | TO STA. | CONTRACT NO. 70A26 | |
| | | DATE - | REVISD - | | ILLINOIS FED. AID PROJECT | | | | | | | |