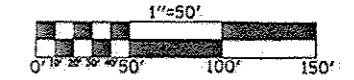


PTZ CAMERA INSTALLATION

I-57
&
I-74



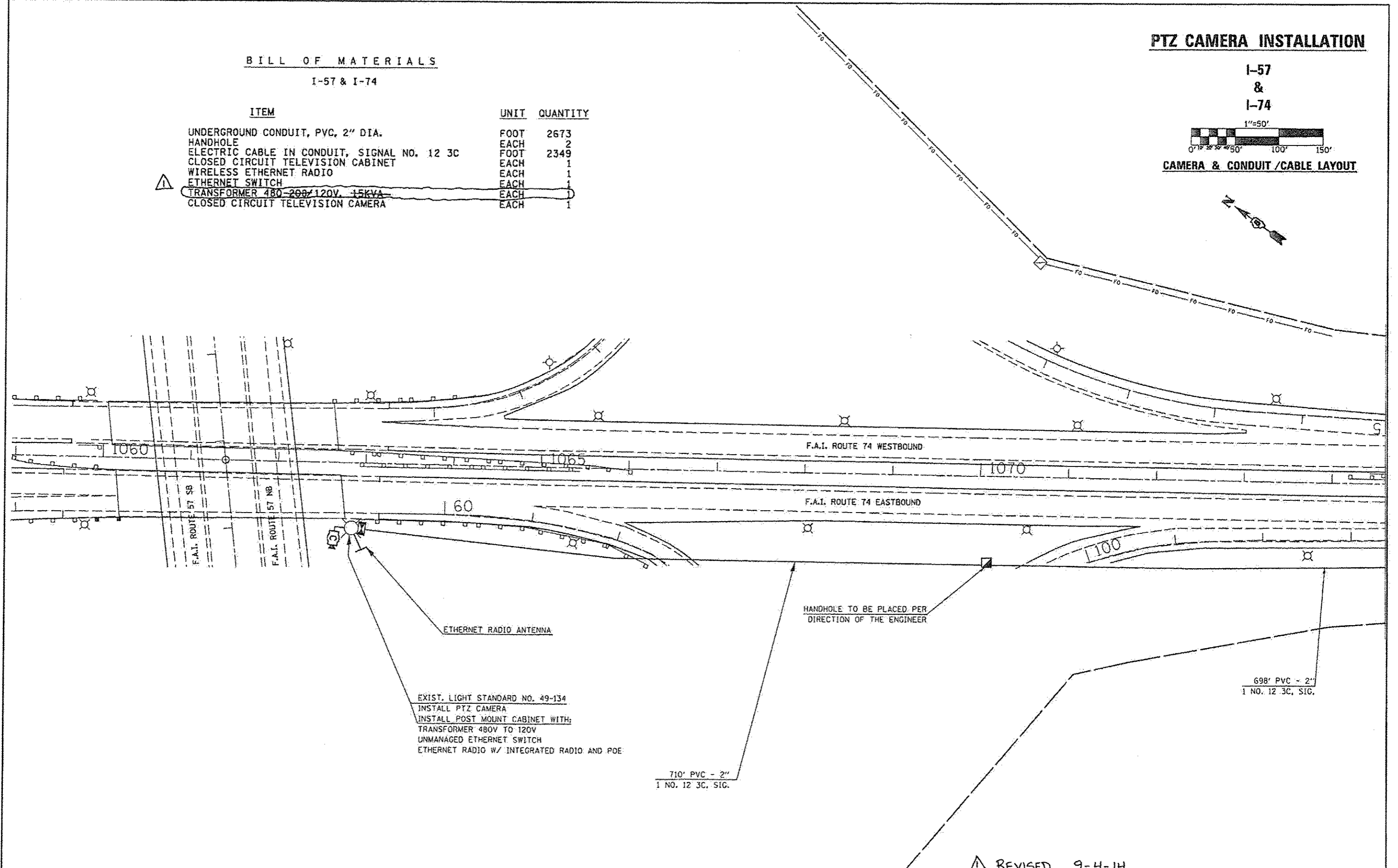
CAMERA & CONDUIT /CABLE LAYOUT



BILL OF MATERIALS

I-57 & I-74

ITEM	UNIT	QUANTITY
UNDERGROUND CONDUIT, PVC, 2" DIA.	FOOT	2673
HANDHOLE	EACH	2
ELECTRIC CABLE IN CONDUIT, SIGNAL NO. 12 3C	FOOT	2349
CLOSED CIRCUIT TELEVISION CABINET	EACH	1
WIRELESS ETHERNET RADIO	EACH	1
ETHERNET SWITCH	EACH	1
TRANSFORMER 480-208/120V, 15KVA	EACH	1
CLOSED CIRCUIT TELEVISION CAMERA	EACH	1



△ REVISED 9-4-14

FILE NAME *	USER NAME * cearlook_jd	DESIGNED -	REVISED -	STATE OF ILLINOIS DEPARTMENT OF TRANSPORTATION	F.A.P. RTE.	SECTION	COUNTY	TOTAL SHEETS	SHEET NO.
c:\pwork\p\idat\cearlook_jd\03142453\PTZ camera plan.dgn	Z camera plan.dgn	DRAWN -	REVISED -		VAR.	FY2014 ITS-1	CHAMPAIGN	71	51
PLOT SCALE = 1/8"=80'54" / 1"=100'	PLOT DATE = 6/26/2014	CHECKED -	REVISED -		CONTRACT NO. 70A26				
MODEL NAME #		DATE -	REVISED -		ILLINOIS FED. AID PROJECT				