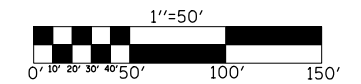


OVERHEAD SIGN STRUCTURE

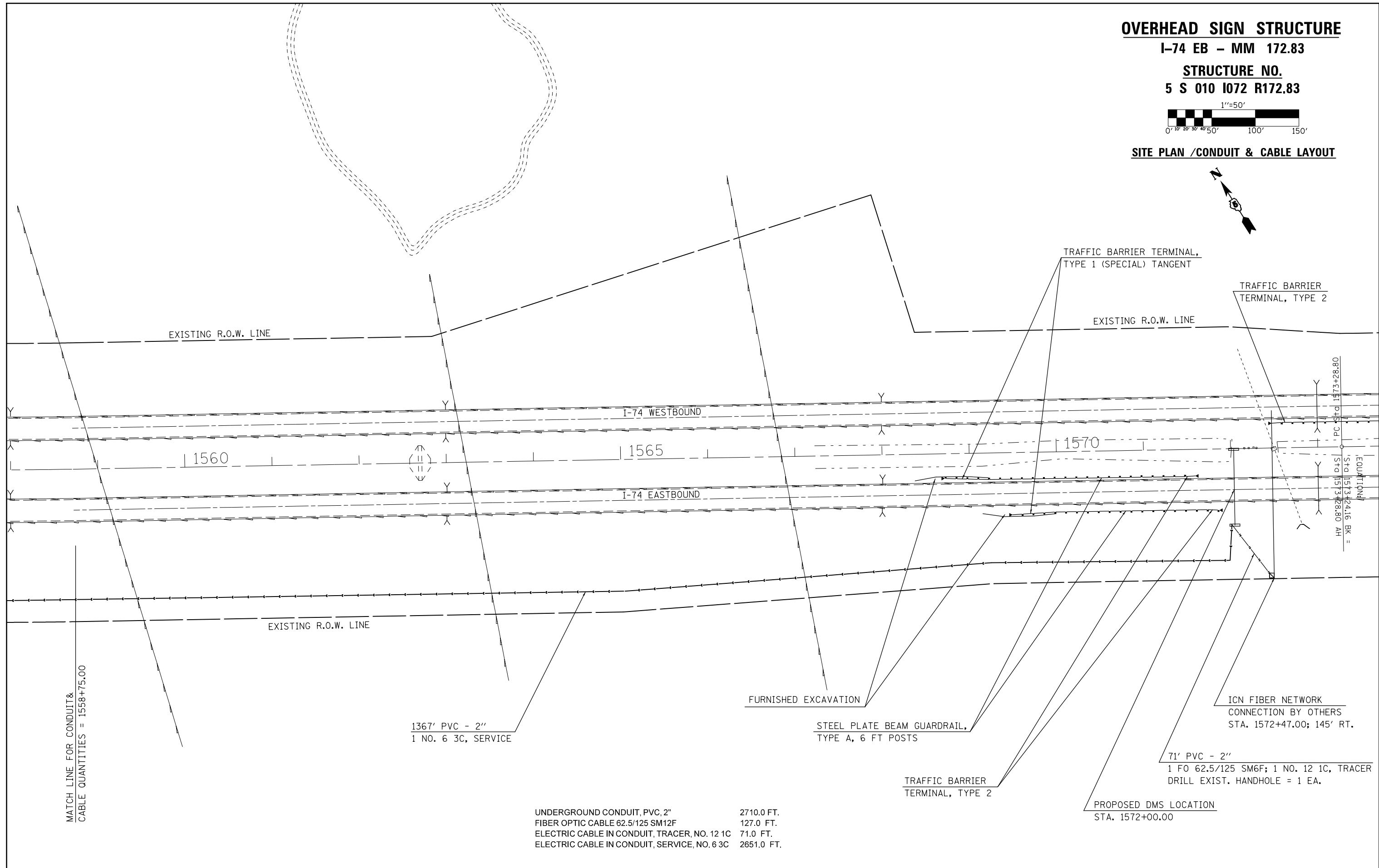
I-74 EB - MM 172.83

STRUCTURE NO.

5 S 010 I072 R172.83



SITE PLAN /CONDUIT & CABLE LAYOUT



UNDERGROUND CONDUIT, PVC, 2" 2710.0 FT.
 FIBER OPTIC CABLE 62.5/125 SM12F 127.0 FT.
 ELECTRIC CABLE IN CONDUIT, TRACER, NO. 12 1C 71.0 FT.
 ELECTRIC CABLE IN CONDUIT, SERVICE, NO. 6 3C 2651.0 FT.

FILE NAME =	USER NAME = ceerlockjd	DESIGNED -	REVISED -
c:\pwork\work\pwork\ceerlockjd\0340463\0570A26-sht-plan_50.dgn		DRAWN -	REVISED -
	PLOT SCALE = 100.0000' / in.	CHECKED -	REVISED -
\$MODELNAME\$	PLOT DATE = 6/26/2014	DATE -	REVISED -

**STATE OF ILLINOIS
 DEPARTMENT OF TRANSPORTATION**

PLAN SHEET			
FAI - 74 EB / MM 172.83			
SCALE:	SHEET	OF SHEETS	STA. TO STA.

F.A.I. RTE.	SECTION	COUNTY	TOTAL SHEETS	SHEET NO.
VAR.	FY2014 ITS-1	CHAMPAIGN	71	16
			CONTRACT NO. 70A26	
ILLINOIS FED. AID PROJECT				