

F.A.I. RTE.	SECTION	COUNTY	TOTAL SHEETS	SHEET NO.
*	D5 CM PATCHING 2015-2	**	32	1
		ILLINOIS	CONTRACT NO. 70A81	
*VARIOUS		**CHAMPAIGN, DOUGLAS, & VERMILION		

STATE OF ILLINOIS  
DEPARTMENT OF TRANSPORTATION  
DIVISION OF HIGHWAYS

**PROPOSED  
HIGHWAY PLANS**

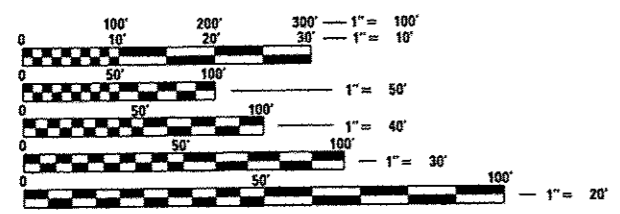
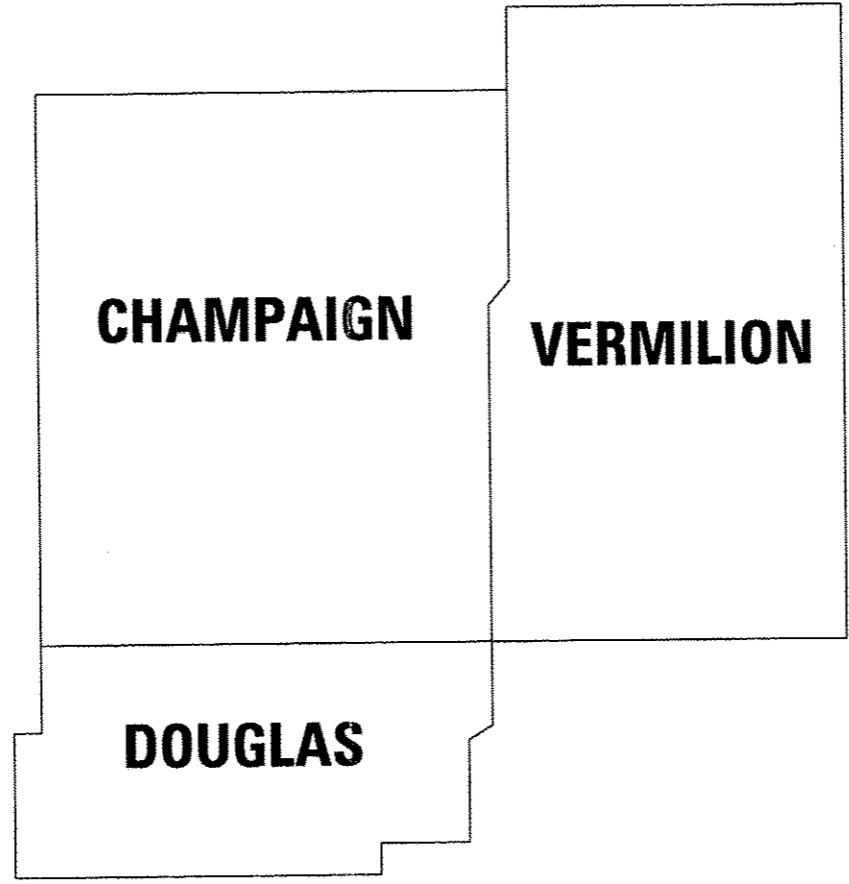
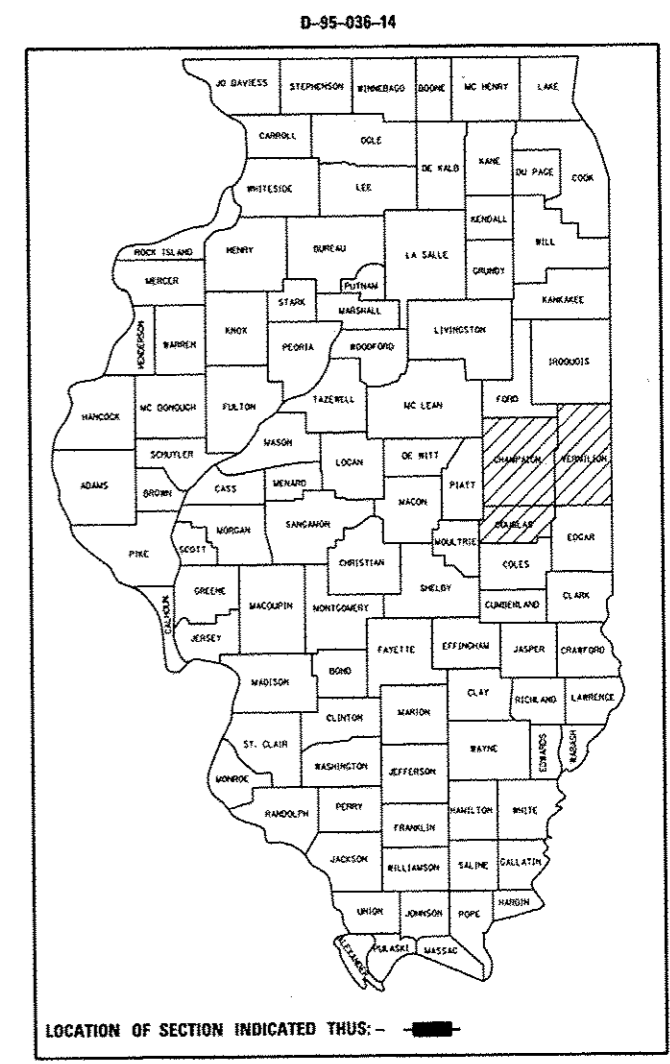
VARIOUS ROUTES  
SECTION D5 CM PATCHING 2015-2

PATCHING  
CHAMPAIGN, DOUGLAS, & VERMILION COUNTIES

C-95-036-14

FOR INDEX OF SHEETS, SEE SHEET NO. 2  
FOR LOCATION MAPS, SEE SHEETS NO. 3-6  
FOR SUMMARY OF QUANTITIES, SEE SHEETS NO. 7-9

CURRENT ADT  
SEE LOCATION MAPS



FULL SIZE PLANS HAVE BEEN PREPARED USING STANDARD ENGINEERING SCALES. REDUCED SIZED PLANS WILL NOT CONFORM TO STANDARD SCALES. IN MAKING MEASUREMENTS ON REDUCED PLANS, THE ABOVE SCALES MAY BE USED.

J.U.L.I.E.  
JOINT UTILITY LOCATION INFORMATION FOR EXCAVATION  
1-800-892-0123  
OR 811

PROJECT ENGINEER: JASON STULTS  
SQUAD LEADER: RYAN CARROLL  
PHONE: 217-465-4181  
CONTRACT NO. 70A81

GROSS LENGTH = 405,672.060 FT. = 76.832 MILE  
NET LENGTH = 405,672.060 FT. = 76.832 MILE

STATE OF ILLINOIS  
DEPARTMENT OF TRANSPORTATION  
DIVISION OF HIGHWAYS

SUBMITTED JUNE 26 2014  
*Kenneth A. Barnett*  
DEPUTY DIRECTOR OF HIGHWAYS, REGION 3 ENGINEER, P.E.

AUG 15 2014  
*John D. Baranzelli*  
ENGINEER OF DESIGN AND ENVIRONMENT

AUG 15 2014  
*Orin Osman*  
DIRECTOR OF HIGHWAYS, CHIEF ENGINEER

PRINTED BY THE AUTHORITY  
OF THE STATE OF ILLINOIS