

F.A.I. RTE.	SECTION	COUNTY	TOTAL SHEETS	SHEET NO.
39	(57-3,57-4)I-3	MCLEAN	7	1
		ILLINOIS	CONTRACT NO. 70B11	

STATE OF ILLINOIS
DEPARTMENT OF TRANSPORTATION
DIVISION OF HIGHWAYS
**PROPOSED
HIGHWAY PLANS**

FOR INDEX OF SHEETS, SEE SHEET NO. 2
FOR SUMMARY OF QUANTITIES, SEE SHEET NO. 3

CURRENT TRAFFIC DATA			
	LEG "A"	LEG "B"	LEG "C"
2013 ADT	18,500	18,600	16,200
P.U. %	66.0	69.0	64.6
S.U. %	5.9	5.1	4.7
M.U. %	28.1	25.9	30.7

LEG "A" IS FROM SIX MILE CREEK TO FAS 472.
LEG "B" IS FROM FAS 472 TO IL 251.
LEG "C" IS FROM IL 251 TO WOODFORD COUNTY LINE.

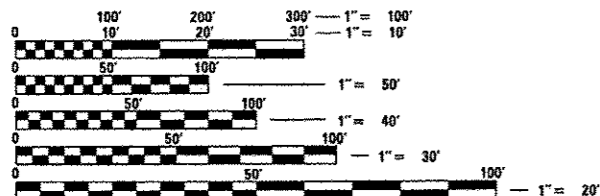
F.A.I. ROUTE 39 (I-39)
SECTION (57-3,57-4)I-3

PAVEMENT PATCHING
MCLEAN COUNTY



C-95-066-14
SIX MILE CREEK SW OF HUDSON TO WOODFORD COUNTY LINE

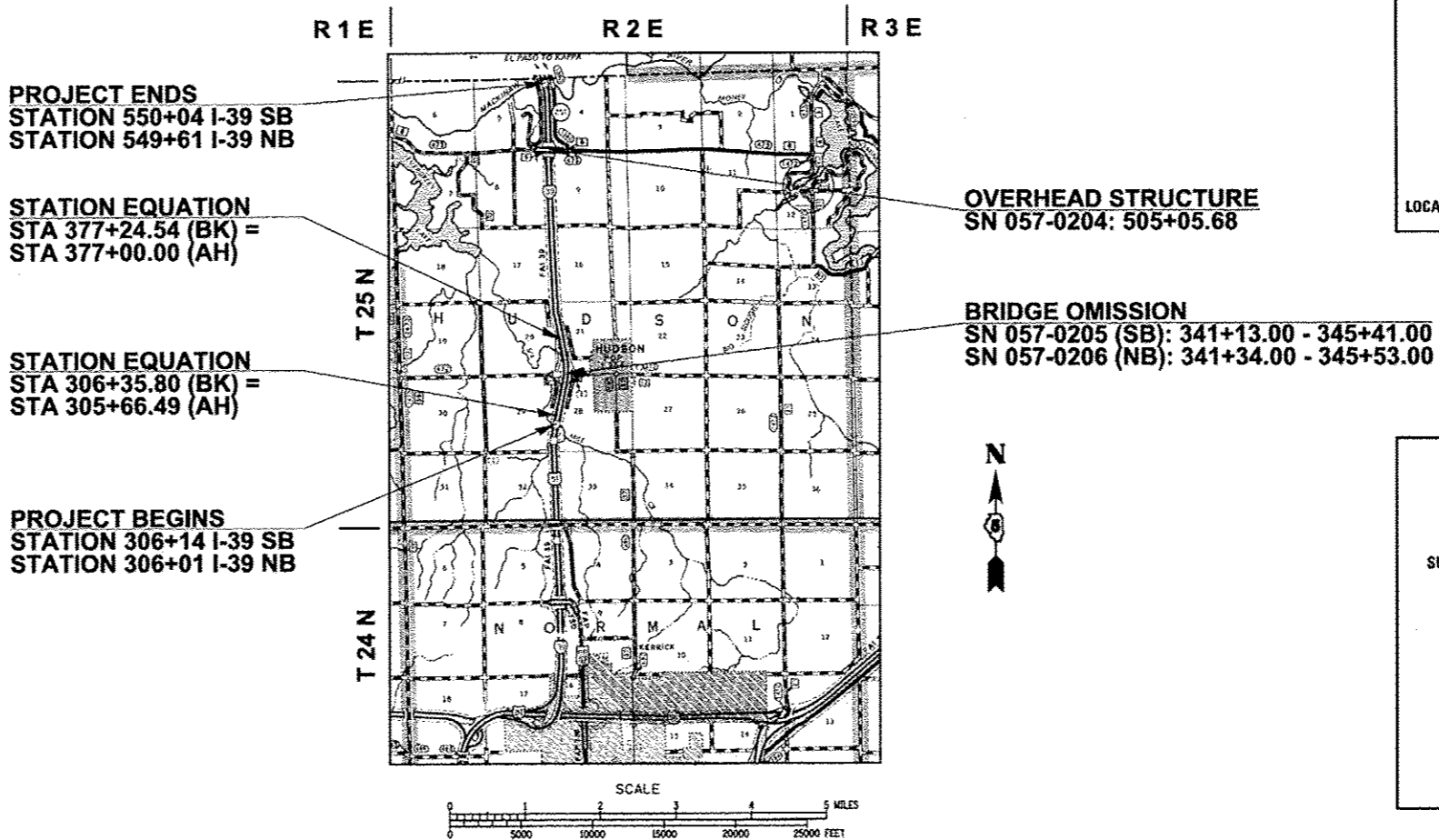
DESIGN DESIGNATION
N/A



FULL SIZE PLANS HAVE BEEN PREPARED USING STANDARD ENGINEERING SCALES. REDUCED SIZED PLANS WILL NOT CONFORM TO STANDARD SCALES. IN MAKING MEASUREMENTS ON REDUCED PLANS, THE ABOVE SCALES MAY BE USED.

J.U.L.I.E.
JOINT UTILITY LOCATION INFORMATION FOR EXCAVATION
1-800-892-0123 (HUDSON TOWNSHIP)
OR 811

PROJECT ENGINEER: NANCY FASIG
SQUAD LEADER: BRIAN J. HOGAN
DESIGNER: ANDREW BERGAN
(217) 465-4181
CONTRACT NO. 70B11



STATE OF ILLINOIS
DEPARTMENT OF TRANSPORTATION
DIVISION OF HIGHWAYS

SUBMITTED JUNE 26 2014

Kensil A. Sammett
DEPUTY DIRECTOR OF HIGHWAYS, REGION ENGINEER

Aug 15 2014
John D. Baranzelli, P.E.
ENGINEER OF DESIGN AND ENVIRONMENT

Aug 15 2014
Omer Osman, P.E.
DIRECTOR OF HIGHWAYS, CHIEF ENGINEER

PRINTED BY THE AUTHORITY
OF THE STATE OF ILLINOIS