

**STATE OF ILLINOIS**  
**DEPARTMENT OF TRANSPORTATION**  
**DIVISION OF HIGHWAYS**  
**PROPOSED**  
**HIGHWAY PLANS**

F.A.I. ROUTE	SECTION	COUNTY	TOTAL SHEETS	SHEET NO.
39	(57-3,57-4)I-3	MCLEAN	7	1
		ILLINOIS	CONTRACT NO. 70B11	

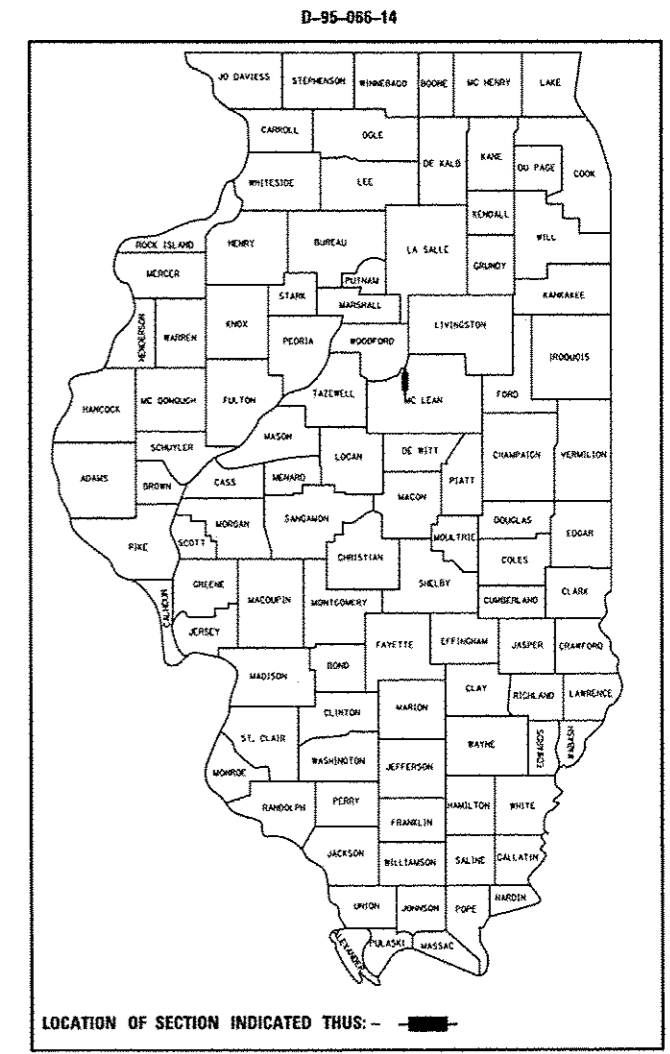
FOR INDEX OF SHEETS, SEE SHEET NO. 2  
 FOR SUMMARY OF QUANTITIES, SEE SHEET NO. 3

CURRENT TRAFFIC DATA			
	LEG "A"	LEG "B"	LEG "C"
2013 ADT	18,500	18,600	16,200
P.U. %	66.0	69.0	64.6
S.U. %	5.9	5.1	4.7
M.U. %	28.1	25.9	30.7

LEG "A" IS FROM SIX MILE CREEK TO FAS 472.  
 LEG "B" IS FROM FAS 472 TO IL 251.  
 LEG "C" IS FROM IL 251 TO WOODFORD COUNTY LINE.

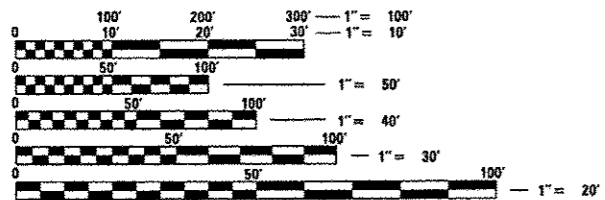
**F.A.I. ROUTE 39 (I-39)**  
**SECTION (57-3,57-4)I-3**

**PAVEMENT PATCHING**  
**MCLEAN COUNTY**



**DESIGN DESIGNATION**  
N/A

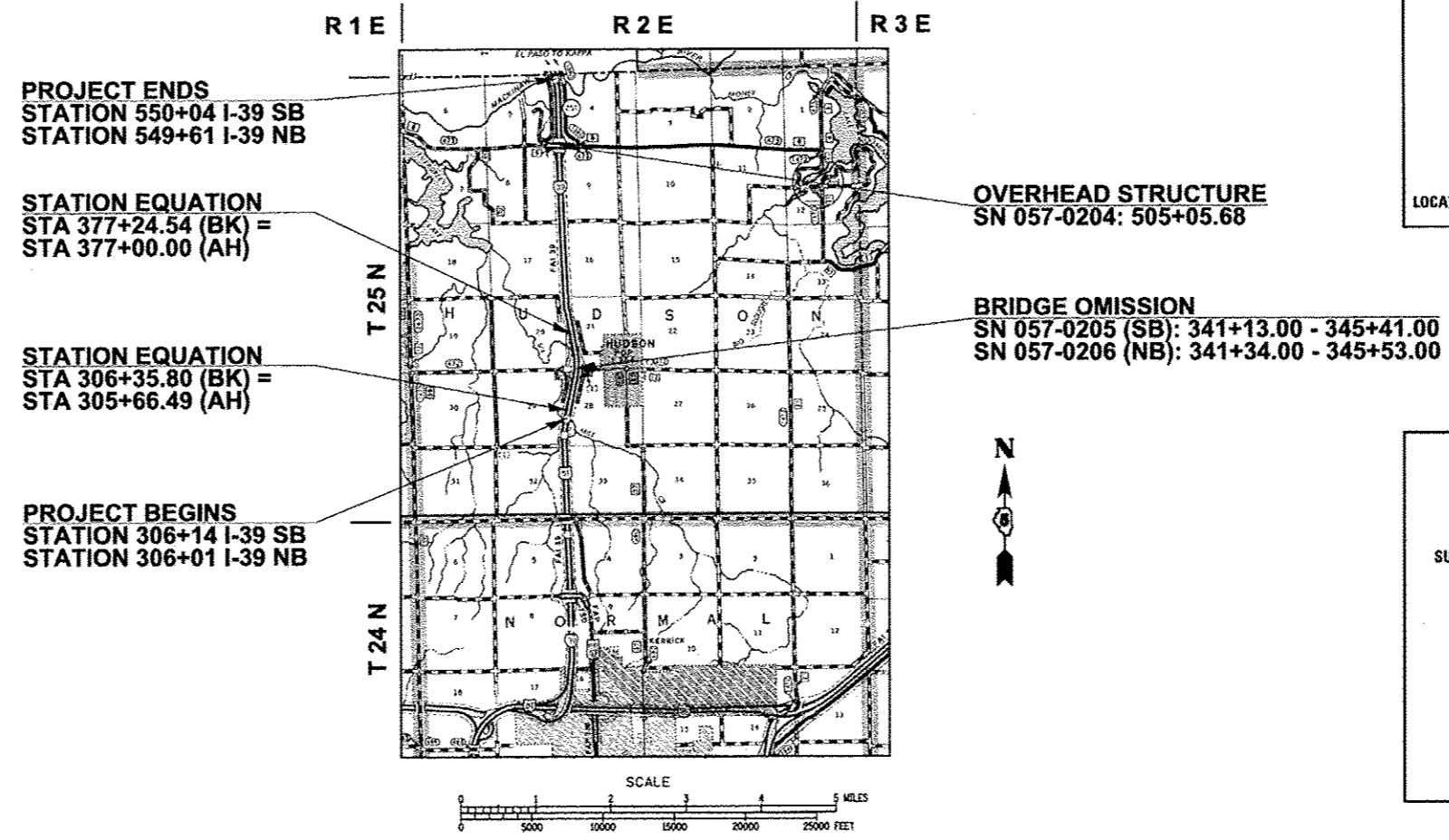
C-95-066-14  
 SIX MILE CREEK SW OF HUDSON TO WOODFORD COUNTY LINE



FULL SIZE PLANS HAVE BEEN PREPARED USING STANDARD ENGINEERING SCALES. REDUCED SIZED PLANS WILL NOT CONFORM TO STANDARD SCALES. IN MAKING MEASUREMENTS ON REDUCED PLANS, THE ABOVE SCALES MAY BE USED.

J.U.L.I.E.  
 JOINT UTILITY LOCATION INFORMATION FOR EXCAVATION  
 1-800-892-0123 (HUDSON TOWNSHIP)  
 OR 811

**PROJECT ENGINEER: NANCY FASIG**  
**SQUAD LEADER: BRIAN J. HOGAN**  
**DESIGNER: ANDREW BERGAN**  
 (217) 465-4181  
**CONTRACT NO. 70B11**



STATE OF ILLINOIS  
 DEPARTMENT OF TRANSPORTATION  
 DIVISION OF HIGHWAYS

SUBMITTED JUNE 26 2014

*Kensil A. Sammett*  
 DEPUTY DIRECTOR OF HIGHWAYS, REGION ENGINEER

Aug 15 2014  
*John D. Baranzelli, P.E.*  
 ENGINEER OF DESIGN AND ENVIRONMENT

Aug 15 2014  
*Omer Osman, P.E.*  
 DIRECTOR OF HIGHWAYS, CHIEF ENGINEER

**PRINTED BY THE AUTHORITY**  
**OF THE STATE OF ILLINOIS**

## INDEX OF SHEETS

<u>SHEET NO.</u>	<u>DESCRIPTION</u>
1	COVER SHEET
2	INDEX OF SHEETS
2	GENERAL NOTES
2	LIST OF STANDARDS
3	SUMMARY OF QUANTITIES
4	TYPICAL SECTIONS
5-6	SCHEDULES OF QUANTITIES
7	SWITCHBACK DETAIL SHEET

## GENERAL NOTES

G.N.-100  
ENGLISH UNITS OF MEASUREMENT SHALL GOVERN OVER AND SUPERSEDE ANY METRIC UNITS SHOWN IN THIS CONTRACT. WHERE INCLUDED, METRIC UNITS ARE FOR INFORMATION ONLY.

G.N.-100A  
ELECTRONIC FILES AND/OR ELECTRONIC SURVEY INFORMATION INCLUDING CADD FILES WILL NOT BE AVAILABLE TO THE CONTRACTOR.

G.N.-442B – PATCHING SCHEDULES  
THE PATCHING SCHEDULES INCLUDED IN THE PLANS REPRESENT THE BEST INFORMATION AVAILABLE AT THE TIME OF COMPLETION OF THE PLANS FOR LETTING. VARIATIONS IN LOCATION AND SIZES OF BOTH FULL-DEPTH AND PARTIAL-DEPTH PATCHES MAY OCCUR.

G.N.-1004.01  
COARSE AGGREGATE GRADATION CA-10 MAY BE USED WHENEVER COARSE AGGREGATE CA-6 IS SPECIFIED IN THE STANDARD SPECIFICATIONS.

NO COMMITMENTS

## HIGHWAY STANDARDS

<u>STANDARD NO.</u>	<u>DESCRIPTION</u>
000001-06	STANDARD SYMBOLS, ABBREVIATIONS, AND PATTERNS
001001-02	AREAS OF REINFORCEMENT BARS
001006	DECIMAL OF AN INCH AND OF A FOOT
420001-07	PAVEMENT JOINTS
421001-02	BAR REINFORCEMENT FOR CRC PAVEMENT
421101-09	24' (7.2 m) CRC PAVEMENT (WITH WIDE FLANGE BEAM TERMINAL JOINT)
442001-04	CLASS A PATCHES
701101-04	OFF-ROAD OPERATIONS, MULTILANE, 15' (4.5 m) TO 24" (600 mm) FROM PAVEMENT EDGE
701400-07	APPROACH TO LANE CLOSURE, FREEWAY/EXPRESSWAY
701401-08	LANE CLOSURE, FREEWAY/EXPRESSWAY
701411-08	LANE CLOSURE, MULTILANE, AT ENTRANCE OR EXIT RAMP, FOR SPEEDS $\geq$ 45 MPH
701426-06	LANE CLOSURE, MULTILANE, INTERMITTENT OR MOVING OPERATION, FOR SPEEDS $\geq$ 45 MPH
701901-03	TRAFFIC CONTROL DEVICES

FILE NAME =	USER NAME = bergonaj	DESIGNED -	REVISED -	<b>STATE OF ILLINOIS DEPARTMENT OF TRANSPORTATION</b>	<b>INDEX OF SHEETS, GENERAL NOTES, &amp; LIST OF HIGHWAY STANDARDS</b>	F.A.I. RTE.	SECTION	COUNTY	TOTAL SHEETS	SHEET NO.
o:\pr\work\p\p\dot\bergonaj\2011-5HT-INDEX.dgn	DRAWN -	REVISED -	39			(57-3,57-4)-3	MCLEAN	7	2	
PLOT SCALE = 48.0000' / 1" .	CHECKED -	REVISED -	CONTRACT NO. 70B11							
MODELNAME#	PLOT DATE = 6/26/2014	DATE -	REVISED -			SCALE:	SHEET 1 OF 1 SHEETS	STA.	TO STA.	ILLINOIS FED. AID PROJECT

LOCATION OF WORK: FAI 39  
RURAL  
INTERSTATE  
STA. 306+01 TO STA. 550+04  
MCLEAN COUNTY  
FUNDING BREAKOUT: 100% STATE  
CONSTRUCTION TYPE CODE: 0005

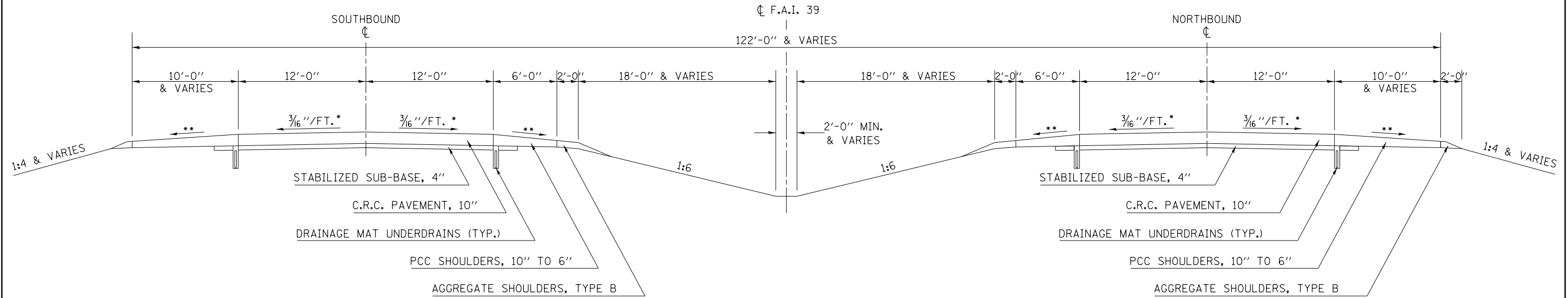
CODE NO.	ITEM	UNIT	QUANTITY
44200549	CLASS A PATCHES , TYPE I, 10 INCH	SQ YD	220.0
44200553	CLASS A PATCHES , TYPE II, 10 INCH	SQ YD	220.0
44200557	CLASS A PATCHES , TYPE III, 10 INCH	SQ YD	40.0
44200559	CLASS A PATCHES , TYPE IV, 10 INCH	SQ YD	2,110.0
44213000	PATCHING REINFORCEMENT	SQ YD	2,590.0
44213200	SAW CUTS	FOOT	10,640.0
44213204	TIE BARS 3/4"	EACH	2,090.0
67100100	MOBILIZATION	L SUM	1.0
70103815	TRAFFIC CONTROL SURVEILLANCE	CAL DA	20.0
X7010216	TRAFFIC CONTROL AND PROTECTION, (SPECIAL)	L SUM	1.0
X7010410	SPEED DISPLAY TRAILER	CAL MO	2.0
X7015005	CHANGEABLE MESSAGE SIGN	CAL DA	34.0
* DENOTES SPECIALTY ITEM			

12

# EXISTING TYPICAL SECTION F.A.I. 39

1

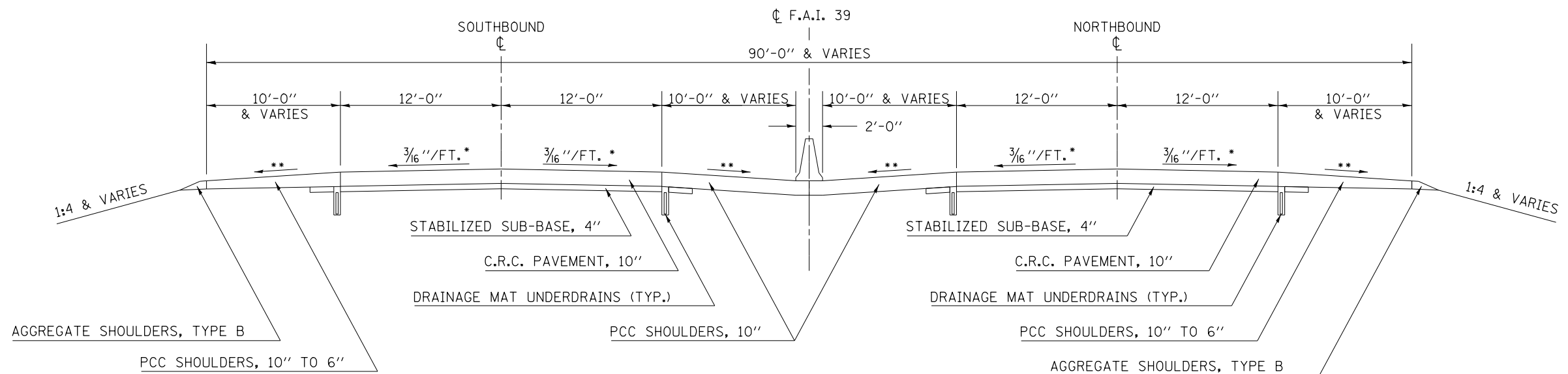
STATION TO STATION  
 306+01.00 TO 306+35.80 (BK)  
 305+66.49 (AH) TO 377+24.54 (BK)  
 370+00.00 (AH) TO 511+11.00 ②



# EXISTING TYPICAL SECTION F.A.I. 39

2

① STATION TO STATION  
 511+11.00 TO 550+04.00



- \* SLOPE VARIES FOR SUPERELEVATION IN CURVES
- \*\* SLOPE VARIES IN SUPERELEVATION WITH MAXIMUM OF 0.08 FT/FT DIFFERENCE

FILE NAME =	USER NAME = bergenej	DESIGNED -	REVISED -	<b>STATE OF ILLINOIS DEPARTMENT OF TRANSPORTATION</b>	<b>TYPICAL SECTIONS</b>			F.A.I. RE.	SECTION	COUNTY	TOTAL SHEETS	SHEET NO.
et:\pwork\pwork\dot\bergenej\d0404774\0570811-SHT-TYPICAL.dgn	PLOT SCALE = 40.0000' / in.	DRAWN -	REVISED -					39	(57-3,57-4)I-3	MCLEAN	7	4
*MODELNAME*	PLOT DATE = 6/26/2014	CHECKED -	REVISED -		SCALE: SHEET 1 OF 1 SHEETS STA. TO STA.			CONTRACT NO. 70B11				
		DATE -	REVISED -		ILLINOIS FED. AID PROJECT							

# SCHEDULE OF QUANTITIES

## CLASS A PATCHING (SHEET 1 OF 2)

### NORTHBOUND

	STATION	STATION	LENGTH (FOOT)	WDTH (FOOT)	CLASS A PATCHES, TYPE I, 10 INCH 44200549 (SQ YD)	CLASS A PATCHES, TYPE II, 10 INCH 44200553 (SQ YD)	CLASS A PATCHES, TYPE III, 10 INCH 44200557 (SQ YD)	CLASS A PATCHES, TYPE IV, 10 INCH 44200559 (SQ YD)	PATCHING REINFORCEMENT 44213000 (SQ YD)	SAW CUTS 44213200 (FOOT)	TIE BARS 3/4" 44213204 (EACH)
NBPL	307+80.00	307+84.00	4.0	6.0	2.7	0.0	0.0	0.0	2.7	36.0	0.0
NBDL	307+95.00	310+00.00	205.0	12.0	0.0	0.0	0.0	273.3	273.3	663.0	205.0
NBDL	312+55.00	312+59.00	4.0	6.0	2.7	0.0	0.0	0.0	2.7	36.0	0.0
NBDL	313+45.00	313+65.00	20.0	6.0	0.0	13.3	0.0	0.0	13.3	84.0	20.0
NBDL	314+15.00	314+21.00	6.0	6.0	4.0	0.0	0.0	0.0	4.0	42.0	0.0
NBPL	318+25.00	318+35.00	10.0	6.0	0.0	6.7	0.0	0.0	6.7	54.0	0.0
NBDL	318+40.00	318+44.00	4.0	6.0	2.7	0.0	0.0	0.0	2.7	36.0	0.0
NBDL	320+75.00	320+79.00	4.0	6.0	2.7	0.0	0.0	0.0	2.7	36.0	0.0
NBDL	322+05.00	322+20.00	15.0	6.0	0.0	10.0	0.0	0.0	10.0	69.0	0.0
NBDL	323+25.00	323+35.00	10.0	6.0	0.0	6.7	0.0	0.0	6.7	54.0	0.0
NBDL	323+65.00	324+30.00	65.0	6.0	0.0	0.0	0.0	43.3	43.3	219.0	65.0
CH 12	4+25.00	4+29.00	4.0	16.0	0.0	7.1	0.0	0.0	7.1	76.0	0.0
NBDL	327+25.00	327+31.00	6.0	6.0	4.0	0.0	0.0	0.0	4.0	42.0	0.0
CH 12	6+45.00	6+49.00	4.0	16.0	0.0	7.1	0.0	0.0	7.1	76.0	0.0
CH 12	6+85.00	6+89.00	4.0	16.0	0.0	7.1	0.0	0.0	7.1	76.0	0.0
NBDL	332+90.00	333+60.00	70.0	12.0	0.0	0.0	0.0	93.3	93.3	258.0	70.0
NBDL	333+45.00	333+51.00	6.0	12.0	0.0	8.0	0.0	0.0	8.0	66.0	0.0
NBDL	336+50.00	336+60.00	10.0	6.0	0.0	6.7	0.0	0.0	6.7	54.0	0.0
NBDL	338+70.00	338+76.00	6.0	6.0	4.0	0.0	0.0	0.0	4.0	42.0	0.0
NBPL	339+30.00	339+36.00	6.0	6.0	4.0	0.0	0.0	0.0	4.0	42.0	0.0
NBPL	339+85.00	339+97.00	12.0	12.0	0.0	0.0	16.0	0.0	16.0	84.0	0.0
NBDL	349+40.00	349+46.00	6.0	6.0	4.0	0.0	0.0	0.0	4.0	42.0	0.0
NBDL	352+30.00	352+36.00	6.0	6.0	4.0	0.0	0.0	0.0	4.0	42.0	0.0
NBDL	357+00.00	357+50.00	50.0	6.0	0.0	0.0	0.0	33.3	33.3	174.0	50.0
NBPL	358+05.00	358+09.00	4.0	6.0	2.7	0.0	0.0	0.0	2.7	36.0	0.0
NBDL	358+25.00	358+45.00	20.0	12.0	0.0	0.0	0.0	26.7	26.7	108.0	20.0
NBDL	358+60.00	358+66.00	6.0	6.0	4.0	0.0	0.0	0.0	4.0	42.0	0.0
NBPL	360+75.00	360+81.00	6.0	6.0	4.0	0.0	0.0	0.0	4.0	42.0	0.0
NBDL	361+75.00	361+81.00	6.0	6.0	4.0	0.0	0.0	0.0	4.0	42.0	0.0
NBDL	363+15.00	363+25.00	10.0	6.0	0.0	6.7	0.0	0.0	6.7	54.0	0.0
NBDL	364+20.00	364+26.00	6.0	6.0	4.0	0.0	0.0	0.0	4.0	42.0	0.0
NBDL	364+70.00	364+80.00	10.0	6.0	0.0	6.7	0.0	0.0	6.7	54.0	0.0
NBDL	365+65.00	365+75.00	10.0	6.0	0.0	6.7	0.0	0.0	6.7	54.0	0.0
NBDL	366+40.00	366+46.00	6.0	6.0	4.0	0.0	0.0	0.0	4.0	42.0	0.0
NBDL	371+65.00	372+40.00	75.0	6.0	0.0	0.0	0.0	50.0	50.0	249.0	75.0
NBDL	373+00.00	373+60.00	60.0	12.0	0.0	0.0	0.0	80.0	80.0	228.0	60.0
NBDL	374+20.00	374+45.00	25.0	6.0	0.0	0.0	16.7	0.0	16.7	99.0	25.0
NBDL	375+00.00	375+06.00	6.0	6.0	4.0	0.0	0.0	0.0	4.0	42.0	0.0
NBDL	376+15.00	376+21.00	6.0	6.0	4.0	0.0	0.0	0.0	4.0	42.0	0.0
NBDL	378+25.00	378+31.00	6.0	6.0	4.0	0.0	0.0	0.0	4.0	42.0	0.0
NBDL	379+50.00	379+56.00	6.0	12.0	0.0	8.0	0.0	0.0	8.0	66.0	0.0
NBDL	381+00.00	381+06.00	6.0	6.0	4.0	0.0	0.0	0.0	4.0	42.0	0.0
NBDL	396+65.00	396+71.00	6.0	6.0	4.0	0.0	0.0	0.0	4.0	42.0	0.0
NBDL	398+70.00	398+76.00	6.0	6.0	4.0	0.0	0.0	0.0	4.0	42.0	0.0
NBDL	399+75.00	399+81.00	6.0	6.0	4.0	0.0	0.0	0.0	4.0	42.0	0.0
NBDL	402+40.00	402+46.00	6.0	6.0	4.0	0.0	0.0	0.0	4.0	42.0	0.0
NBDL	403+40.00	403+46.00	6.0	12.0	0.0	8.0	0.0	0.0	8.0	66.0	0.0
NBDL	403+50.00	403+56.00	6.0	6.0	4.0	0.0	0.0	0.0	4.0	42.0	0.0
NBDL	404+60.00	404+66.00	6.0	6.0	4.0	0.0	0.0	0.0	4.0	42.0	0.0
NBDL	406+40.00	406+46.00	6.0	6.0	4.0	0.0	0.0	0.0	4.0	42.0	0.0
NBDL	408+60.00	408+70.00	10.0	6.0	0.0	6.7	0.0	0.0	6.7	54.0	0.0
NBDL	414+00.00	414+06.00	6.0	6.0	4.0	0.0	0.0	0.0	4.0	42.0	0.0
NBDL	419+50.00	419+56.00	6.0	6.0	4.0	0.0	0.0	0.0	4.0	42.0	0.0
NBDL	425+70.00	425+76.00	6.0	6.0	4.0	0.0	0.0	0.0	4.0	42.0	0.0
NBDL	426+80.00	426+86.00	6.0	6.0	4.0	0.0	0.0	0.0	4.0	42.0	0.0
NBDL	427+80.00	427+86.00	6.0	6.0	4.0	0.0	0.0	0.0	4.0	42.0	0.0
NBDL	428+40.00	428+46.00	6.0	6.0	4.0	0.0	0.0	0.0	4.0	42.0	0.0
NBDL	430+25.00	430+31.00	6.0	6.0	4.0	0.0	0.0	0.0	4.0	42.0	0.0
NBDL	431+15.00	431+21.00	6.0	6.0	4.0	0.0	0.0	0.0	4.0	42.0	0.0
NBDL	431+60.00	431+66.00	6.0	12.0	0.0	8.0	0.0	0.0	8.0	66.0	0.0
NBDL	433+60.00	433+66.00	6.0	6.0	4.0	0.0	0.0	0.0	4.0	42.0	0.0
NBDL	452+60.00	452+66.00	6.0	12.0	0.0	8.0	0.0	0.0	8.0	66.0	0.0
NBDL	471+20.00	471+26.00	6.0	6.0	4.0	0.0	0.0	0.0	4.0	42.0	0.0
NBDL	472+15.00	472+21.00	6.0	6.0	4.0	0.0	0.0	0.0	4.0	42.0	0.0
NBDL	473+50.00	475+05.00	155.0	6.0	0.0	0.0	0.0	103.3	103.3	489.0	155.0
NBDL	474+20.00	474+26.00	6.0	6.0	4.0	0.0	0.0	0.0	4.0	42.0	0.0
NB TOTAL:					149.5	131.5	32.7	703.2	1,016.9	5,268.0	745.0
NB ROUNDED:					150.0	140.0	40.0	710.0	1,040.0	5,270.0	750.0

FILE NAME =	USER NAME = bergana.j	DESIGNED -	REVISED -	<b>STATE OF ILLINOIS DEPARTMENT OF TRANSPORTATION</b>	<b>SCHEDULE OF QUANTITIES</b>	F.A.I. RTE.	SECTION	COUNTY	TOTAL SHEETS	SHEET NO.	
		DRAWN -	REVISED -			39	(57-3,57-4)I-3	MCLEAN	7	5	
		CHECKED -	REVISED -			CONTRACT NO. 70B11					
#MODELNAME#	PLOT DATE = 6/26/2014	DATE -	REVISED -			SCALE:	SHEET 1 OF 2 SHEETS	STA.	TO STA.	ILLINOIS FED. AID PROJECT	

# SCHEDULE OF QUANTITIES

## CLASS A PATCHING (SHEET 2 OF 2)

### SOUTHBOUND

	STATION	STATION	LENGTH (FOOT)	WIDTH (FOOT)	CLASS A PATCHES, TYPE I, 10 INCH 44200549 (SQ YD)	CLASS A PATCHES, TYPE II, 10 INCH 44200553 (SQ YD)	CLASS A PATCHES, TYPE III, 10 INCH 44200557 (SQ YD)	CLASS A PATCHES, TYPE IV, 10 INCH 44200559 (SQ YD)	PATCHING REINFORCEMENT 44213000 (SQ YD)	SAW CUTS 44213200 (FOOT)	TIE BARS 3/4" 44213204 (EACH)
SBDL	305+50.00	307+80.00	230.0	6.0	0.0	0.0	0.0	153.3	153.3	714.0	230.0
SBDL	307+25.00	307+31.00	6.0	6.0	4.0	0.0	0.0	0.0	4.0	42.0	0.0
SBDL	308+80.00	308+86.00	6.0	12.0	0.0	8.0	0.0	0.0	8.0	66.0	0.0
SBDL	311+75.00	311+81.00	6.0	12.0	0.0	8.0	0.0	0.0	8.0	66.0	0.0
SBDL	312+10.00	319+30.00	720.0	12.0	0.0	0.0	0.0	960.0	960.0	2,208.0	720.0
SBDL	328+50.00	328+58.00	8.0	6.0	0.0	5.3	0.0	0.0	5.3	48.0	0.0
SBDL	330+30.00	330+36.00	6.0	6.0	4.0	0.0	0.0	0.0	4.0	42.0	0.0
SBDL	338+40.00	338+46.00	6.0	6.0	4.0	0.0	0.0	0.0	4.0	42.0	0.0
SBDL	338+90.00	338+96.00	6.0	6.0	4.0	0.0	0.0	0.0	4.0	42.0	0.0
SBDL	345+80.00	345+86.00	6.0	6.0	4.0	0.0	0.0	0.0	4.0	42.0	0.0
SBDL	347+50.00	347+60.00	10.0	6.0	0.0	6.7	0.0	0.0	6.7	54.0	0.0
SBDL	349+70.00	349+76.00	6.0	6.0	4.0	0.0	0.0	0.0	4.0	42.0	0.0
SBDL	351+20.00	351+30.00	10.0	6.0	0.0	6.7	0.0	0.0	6.7	54.0	0.0
SBDL	352+10.00	352+20.00	10.0	6.0	0.0	6.7	0.0	0.0	6.7	54.0	0.0
SBDL	352+60.00	352+66.00	6.0	6.0	4.0	0.0	0.0	0.0	4.0	42.0	0.0
SBDL	353+80.00	354+50.00	70.0	6.0	0.0	0.0	0.0	46.7	46.7	234.0	70.0
SBDL	355+20.00	355+40.00	20.0	6.0	0.0	13.3	0.0	0.0	13.3	84.0	20.0
SBDL	356+70.00	356+76.00	6.0	6.0	4.0	0.0	0.0	0.0	4.0	42.0	0.0
SBDL	357+50.00	357+56.00	6.0	6.0	4.0	0.0	0.0	0.0	4.0	42.0	0.0
SBDL	360+80.00	361+50.00	70.0	12.0	0.0	0.0	0.0	93.3	93.3	258.0	70.0
SBDL	366+00.00	366+06.00	6.0	6.0	4.0	0.0	0.0	0.0	4.0	42.0	0.0
SBDL	367+00.00	367+06.00	6.0	6.0	4.0	0.0	0.0	0.0	4.0	42.0	0.0
SBDL	372+40.00	372+50.00	10.0	6.0	0.0	6.7	0.0	0.0	6.7	54.0	0.0
SBDL	376+50.00	376+70.00	20.0	6.0	0.0	13.3	0.0	0.0	13.3	84.0	20.0
SBDL	376+90.00	376+96.00	6.0	6.0	4.0	0.0	0.0	0.0	4.0	42.0	0.0
SBDL	382+80.00	382+86.00	6.0	6.0	4.0	0.0	0.0	0.0	4.0	42.0	0.0
SBDL	386+20.00	386+26.00	6.0	6.0	4.0	0.0	0.0	0.0	4.0	42.0	0.0
SBDL	387+80.00	387+86.00	6.0	6.0	4.0	0.0	0.0	0.0	4.0	42.0	0.0
SBDL	400+50.00	401+30.00	80.0	6.0	0.0	0.0	0.0	53.3	53.3	264.0	80.0
SBDL	468+80.00	468+86.00	6.0	6.0	4.0	0.0	0.0	0.0	4.0	42.0	0.0
SBPL	506+15.00	507+45.00	130.0	6.0	0.0	0.0	0.0	86.7	86.7	414.0	130.0
SBDL	510+70.00	510+76.00	6.0	6.0	4.0	0.0	0.0	0.0	4.0	42.0	0.0
SB TOTAL:					68.0	74.7	0.0	1,393.3	1,536.0	5,370.0	1,340.0
SB ROUNDED:					70.0	80.0	0.0	1,400.0	1,550.0	5,370.0	1,340.0

### SUMMARY

	CLASS A PATCHES, TYPE I, 10 INCH 44200549 (SQ YD)	CLASS A PATCHES, TYPE II, 10 INCH 44200553 (SQ YD)	CLASS A PATCHES, TYPE III, 10 INCH 44200557 (SQ YD)	CLASS A PATCHES, TYPE IV, 10 INCH 44200559 (SQ YD)	PATCHING REINFORCEMENT 44213000 (SQ YD)	SAW CUTS 44213200 (FOOT)	TIE BARS 3/4" 44213204 (EACH)
NORTHBOUND TOTAL:	150.0	140.0	40.0	710.0	1,040.0	5,270.0	750.0
SOUTHBOUND TOTAL:	70.0	80.0	0.0	1,400.0	1,550.0	5,370.0	1,340.0
GRAND TOTAL:	220.0	220.0	40.0	2,110.0	2,590.0	10,640.0	2,090.0

