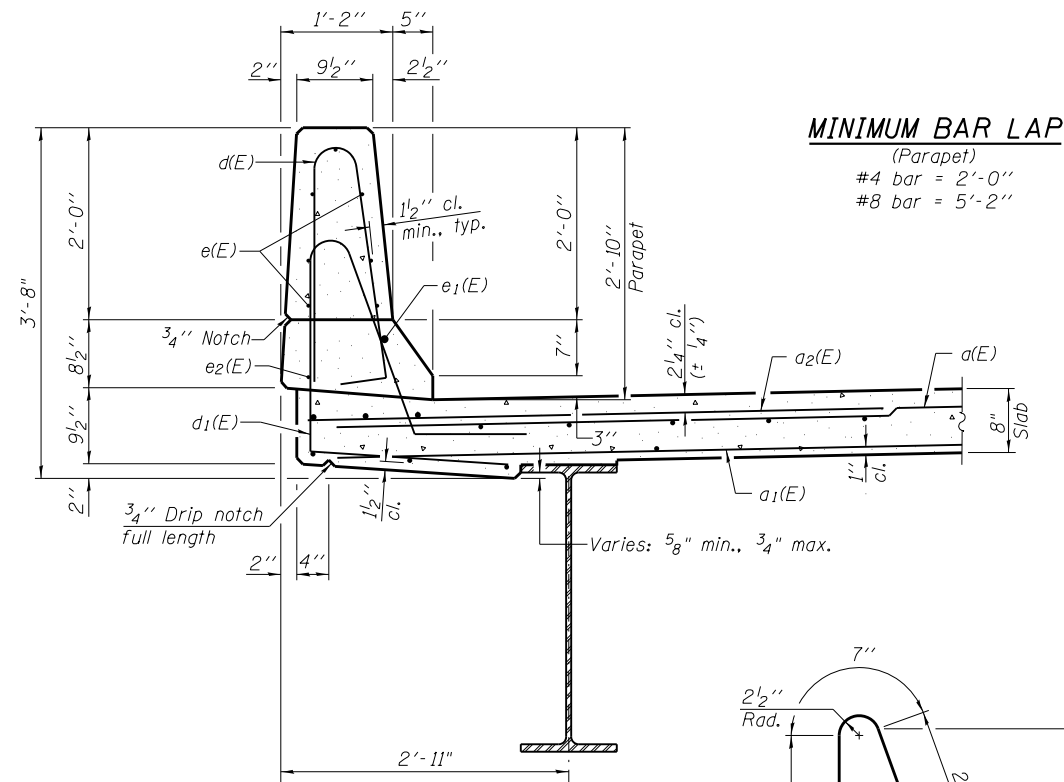


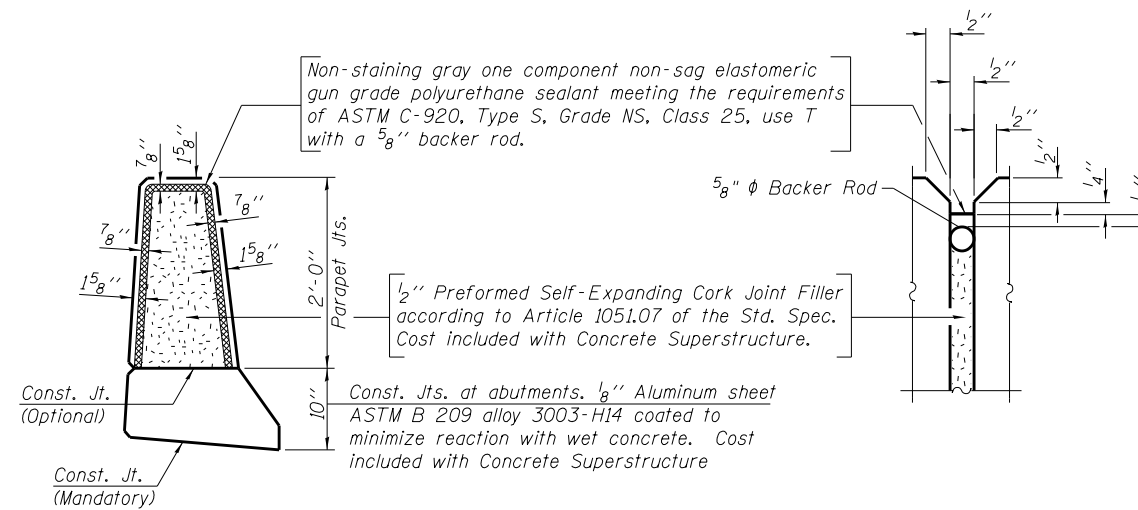
INSIDE ELEVATION OF PARAPET



SECTION THRU PARAPET

MINIMUM BAR LAP

(Parapet)
 #4 bar = 2'-0"
 #8 bar = 5'-2"

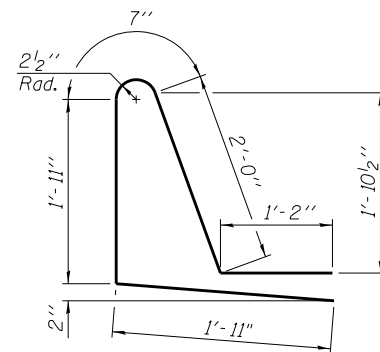


PARAPET JOINT DETAILS

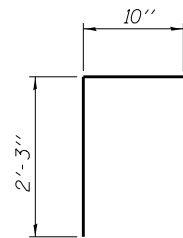
SUPERSTRUCTURE BILL OF MATERIAL

Bar	No.	Size	Length	Shape
d(E)	318	#5	19'-1"	—
a1(E)	206	#5	18'-9"	—
a2(E)	294	#6	6'-6"	—
a3(E)	8	#5	27'-0"	—
b(E)	168	#5	23'-6"	—
b1(E)	108	#5	30'-5"	—
d(E)	188	#5	5'-7"	┌
d1(E)	188	#5	7'-7"	┌
e(E)	70	#4	16'-11"	—
e1(E)	6	#8	32'-2"	—
e2(E)	6	#4	30'-0"	—
m(E)	32	#6	27'-4"	—
m1(E)	32	#6	9'-0"	—
m2(E)	16	#6	3'-9"	—
m3(E)	36	#5	4'-0"	┌
m4(E)	16	#6	4'-4"	—
s(E)	84	#5	10'-5"	┌
s1(E)	72	#5	11'-4"	┌
u(E)	80	#5	3'-11"	┌
v(E)	80	#5	3'-1"	┌
Reinforcement Bars, Epoxy Coated			Pound	27230
Concrete Superstructure			Cu. Yds.	151.4

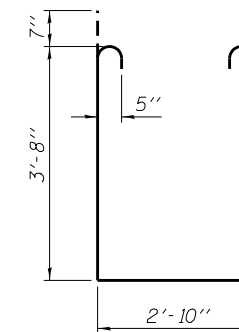
Bars indicated thus 1x3-#5 etc. indicates 1 line of bars with 3 lengths per line.



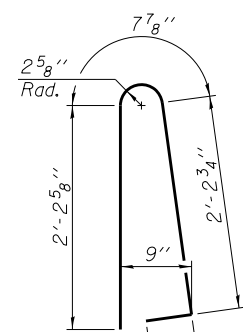
BAR d1(E)



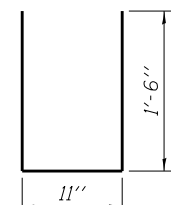
BAR v(E)



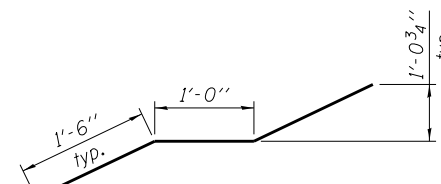
BAR s1(E)



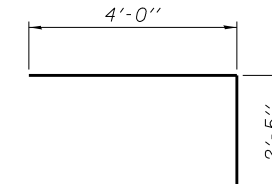
BAR d(E)



BAR u(E)



BAR m3(E)



BAR s(E)