

DIAPHRAGM ELEVATION AT EAST ABUT.

(Looking East - West Abut. similar)

Notes:

Reinforcement bars in diaphragm are billed with superstructure on sheet 8 of 19.

Concrete in diaphragm is included with Concrete Superstructure on sheet 8 of 19.

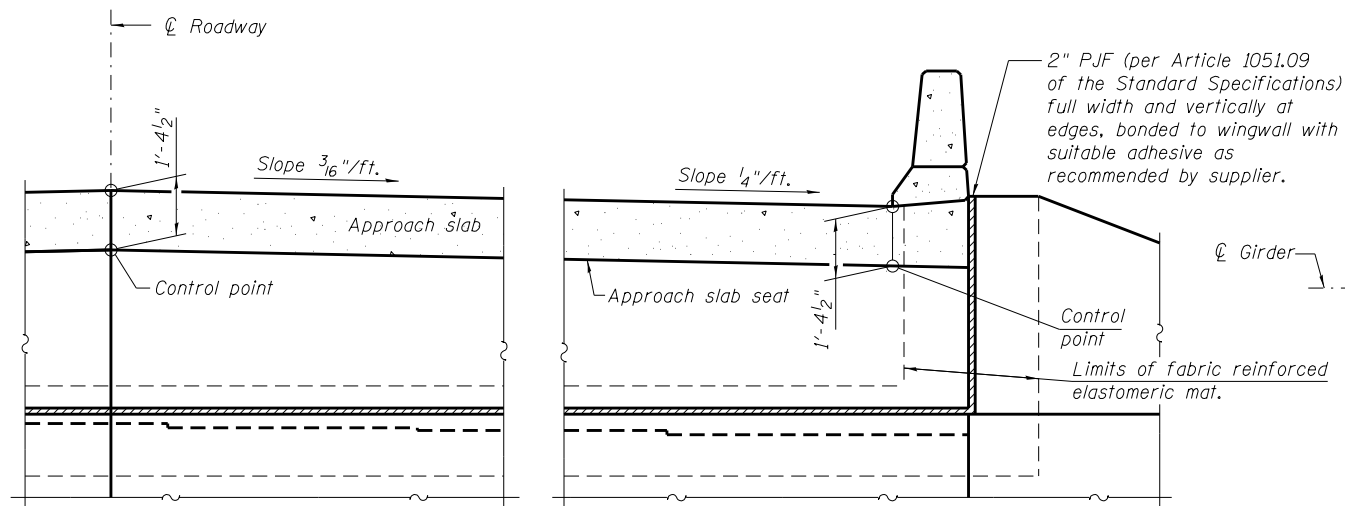
For details of bars s(E), s1(E), m3(E), u(E) and v(E) see sheet 8 of 19.

The s(E), s1(E) and u(E) bars shall be placed parallel to the girders.

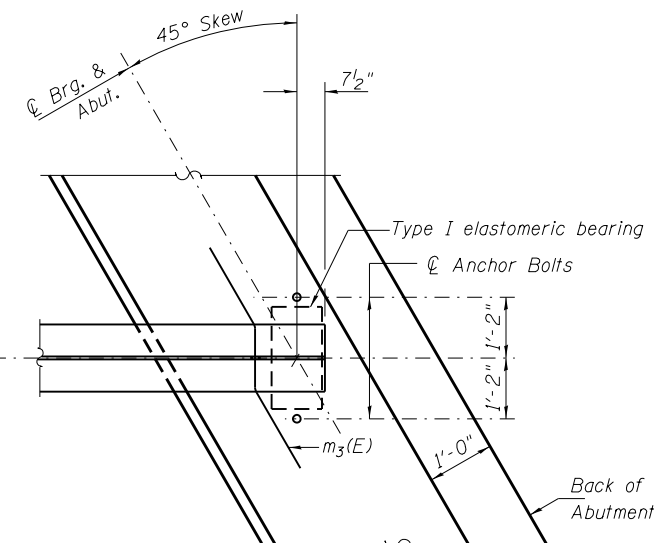
Spacing for these bars shall be at right angles to the girders.

The approach slab seat shall have a constant slope determined from the control points shown.

For bearing details see sheet 14 of 19.

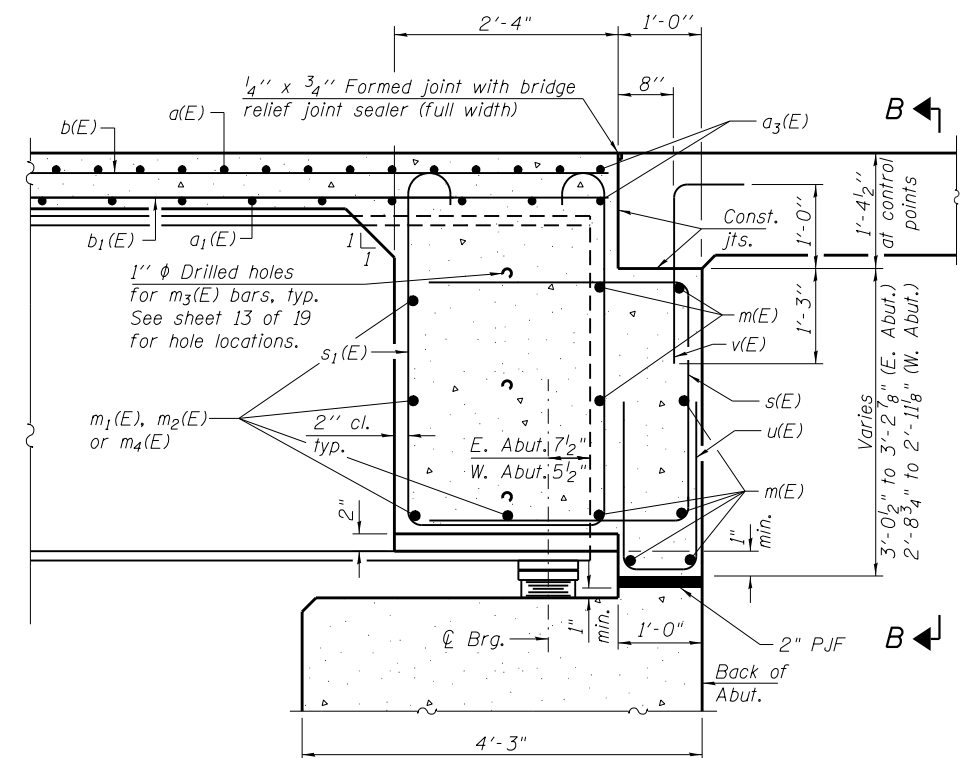


SECTION B-B



PARTIAL PLAN AT EAST ABUTMENT

(Showing bottom flange of girder)



SECTION A-A

(at Rt. L's)



USER NAME =	DESIGNED - HP	REVISED -
FILE NAME =	CHECKED - MTH	REVISED -
PLOT SCALE =	DRAWN - AJF	REVISED -
PLOT DATE =	CHECKED - MTH	REVISED -

**STATE OF ILLINOIS
DEPARTMENT OF TRANSPORTATION**

**CONCRETE END DIAPHRAGMS
STRUCTURE NO. 075-0511**

SHEET NO. 10 OF 19 SHEETS

F.A.P. RTE.	SECTION	COUNTY	TOTAL SHEETS	SHEET NO.
745	108B-3	PIKE	69	45
CONTRACT NO. 72B61				

ILLINOIS FED. AID PROJECT