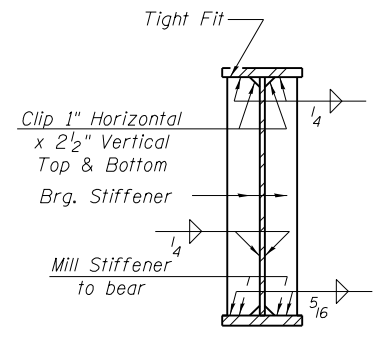
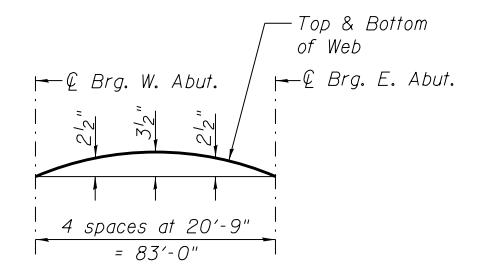


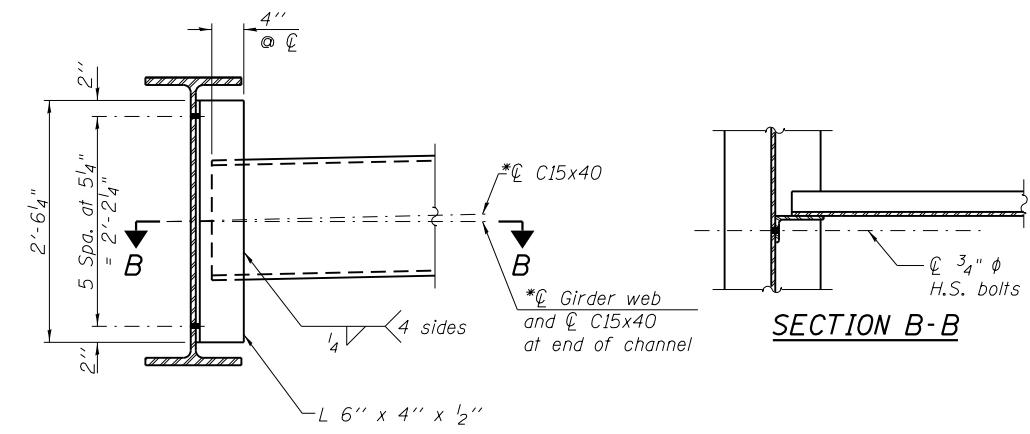
**FRAMING PLAN**



**SECTION AT ABUTMENT**

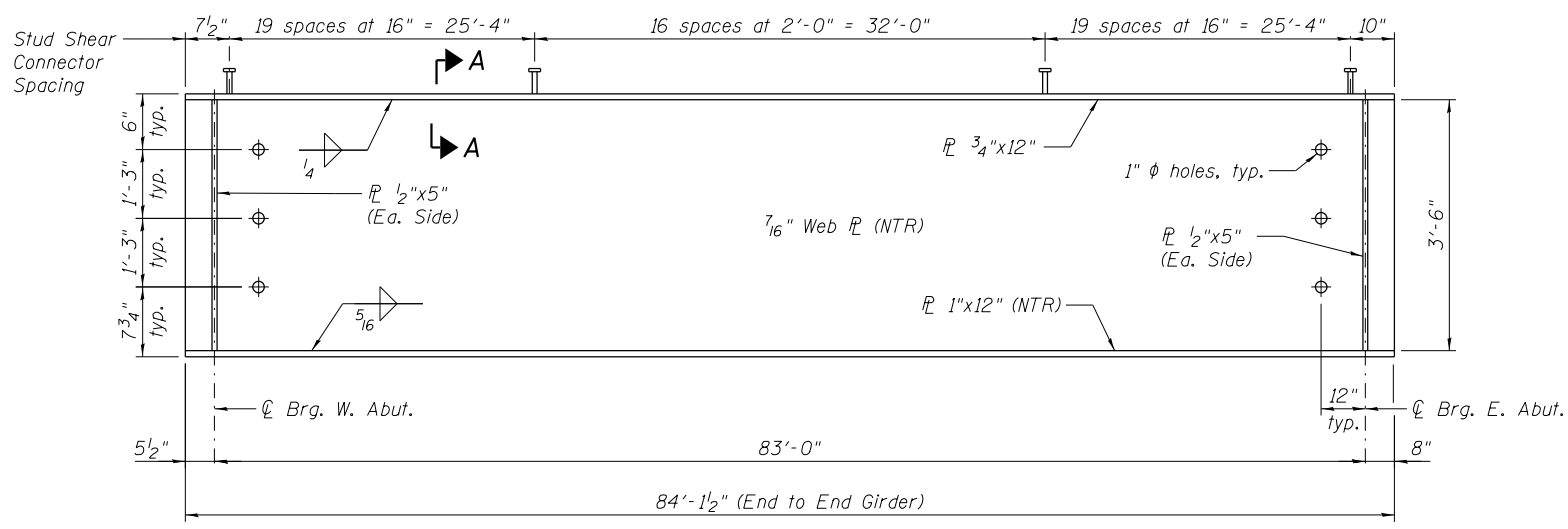


**CAMBER DIAGRAM**

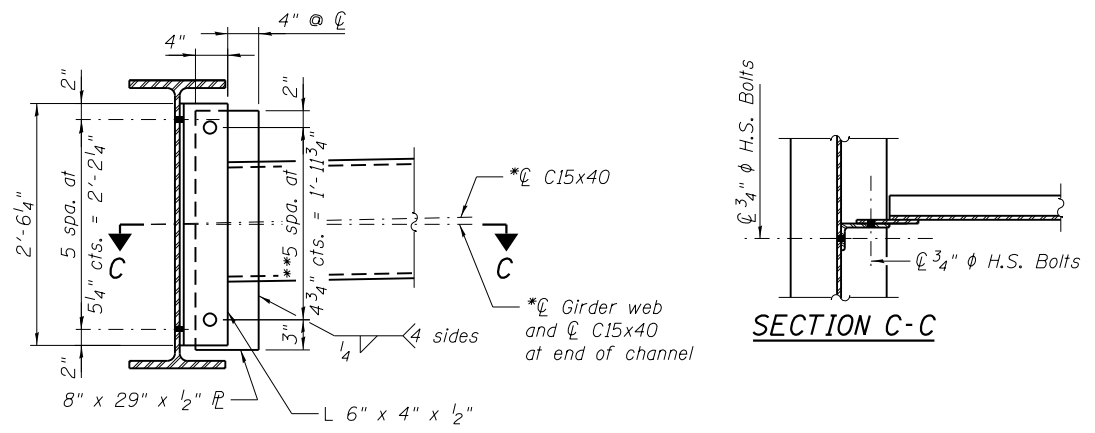


**DIAPHRAGM D**  
(16 Required)

**SECTION C-C**



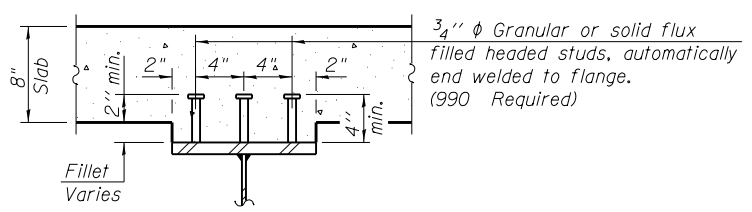
**GIRDER ELEVATION**



**DIAPHRAGM D1**  
(4 Required)

**Notes:**  
 Two hardened washers required for each set of oversized holes.  
 3/4" phi HS bolts, 1 5/16" phi holes, unless otherwise noted.  
 All diaphragms shall be installed as steel is erected and secured with erection pins and bolts except as otherwise noted.  
 Load carrying components designated "NTR" shall conform to the Impact Testing Requirement, Zone 2.

"NTR" denotes plates to which notch toughness requirements are applicable.



**SECTION A-A**

**TOP OF WEB ELEVATIONS**  
(For Fabrication only)

Location	Girder 1	Girder 2	Girder 3	Girder 4	Girder 5	Girder 6
☉ Brg. W. Abut.	620.26	620.42	620.55	620.58	620.49	620.38
☉ Brg. E. Abut.	620.38	620.49	620.58	620.55	620.42	620.26

\*C15x50 channels are permitted to facilitate material acquisition. Calculated weight of structural steel is based on the lighter section. The alternate, if utilized, shall be provided at no additional cost to the Department.  
 \*\*3/4" phi HS bolts, 1 3/16" phi x 1 7/8" vertical slotted holes in 8" x 29" x 1/2" plate and L 6" x 4" x 1/2". Slots shall be positioned such that the bolts start at one end with no concrete load and finish near the opposite end after the deck pour. Bolts in slotted holes shall be finger tightened and then fully tightened after second stage deck pour.