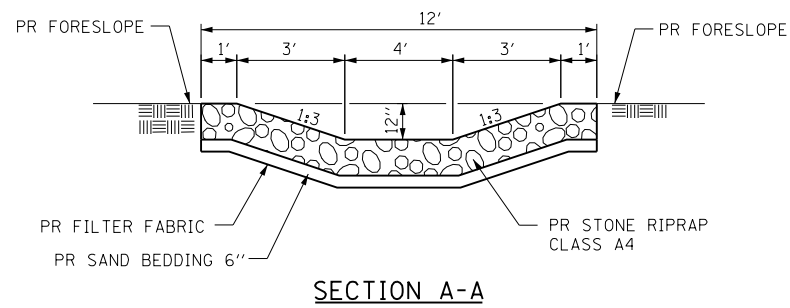
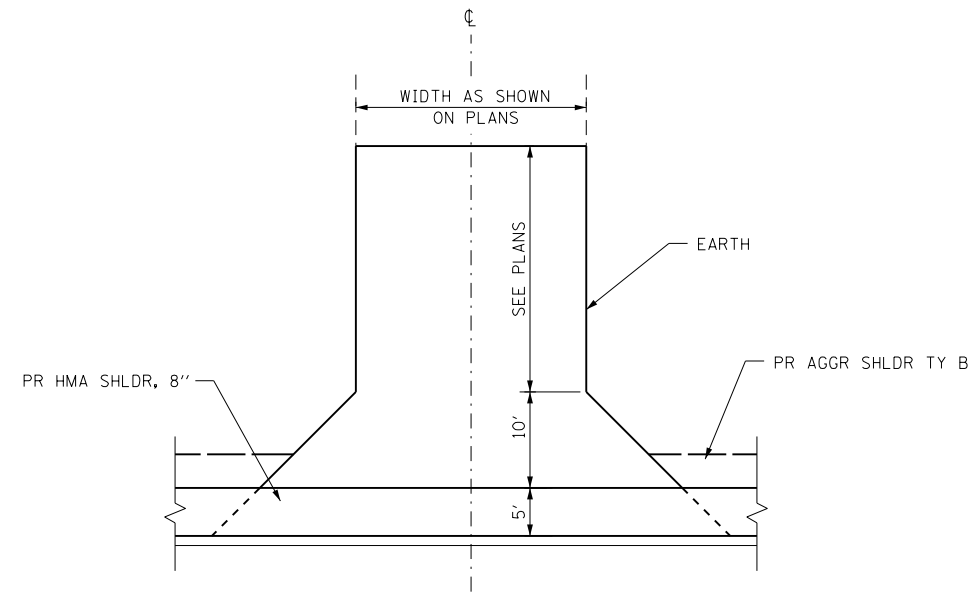


**APPROACH SHOULDER  
DRAIN DETAIL**

STA. 1720+04.14 LT  
 STA. 1720+37.89 RT  
 STA. 1722+12.11 LT  
 STA. 1722+41.55 RT

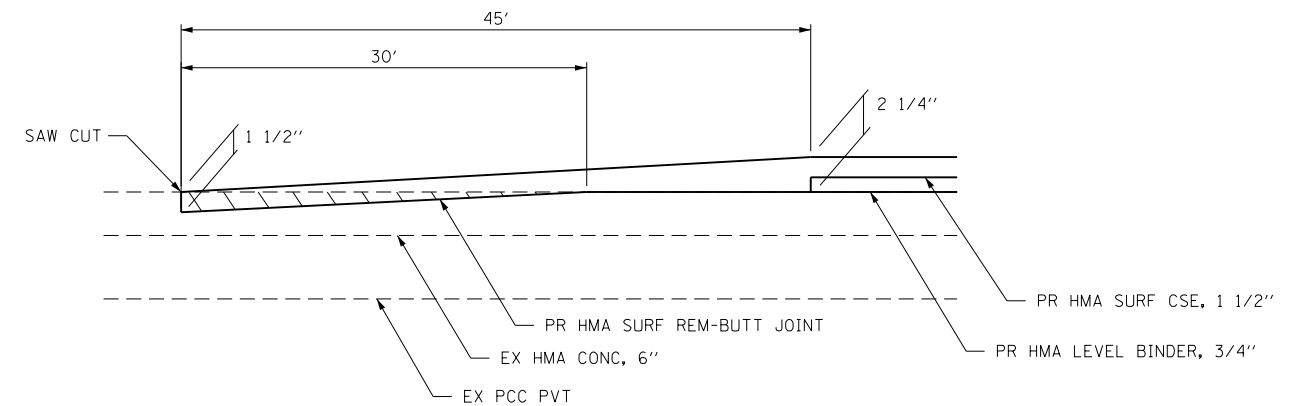


**SECTION A-A**



**FIELD ENTRANCE  
DETAILS  
PLAN VIEW**

STA. 1715+00.00 RT



**BUT JOINT DETAIL**

STA. 1715+00 TO STA. 1715+30  
 STA. 1727+20 TO STA. 1727+50

**GENERAL NOTES:**

1. BITUMINOUS CONCRETE REQUIRED TO CONSTRUCT THE ENTRANCES SHALL BE IN ACCORDANCE WITH THE APPLICABLE PORTIONS OF SECTION 406 AND 408 OF THE STANDARD SPECIFICATIONS AND AS DIRECTED BY THE ENGINEER.
2. WHEN THE BITUMINOUS CONCRETE PROPOSED FOR THE IMPROVEMENT IS THICKER THAN 75 mm (3 INCHES) AND REQUIRE PLACEMENT IN MORE THAN ONE LIFT. THE BOTTOM LIFT(S) SHALL MEET THE REQUIREMENTS OF BITUMINOUS BASE COURSE IN SECTION 406 OF THE STANDARD SPECIFICATIONS AND THE TOP LIFT OF 50 mm (2 INCHES) SHALL MEET THE REQUIREMENTS OF BITUMINOUS CONCRETE SURFACE COURSE, SUPERPAVE.

FILE NAME =	USER NAME = jleaf	DESIGNED -	REVISED -
I:\0807404-IL104 Over Brower Creek\CADD\to\CADsheets\CADsheets_JMC\0672861-sh4-misc		DRAWN -	REVISED -
		CHECKED -	REVISED -
		DATE -	REVISED -

**STATE OF ILLINOIS  
DEPARTMENT OF TRANSPORTATION**

**MISCELLANEOUS DETAILS**

SCALE: SHEET NO. OF SHEETS STA. TO STA.

F.A.P. RTE.	SECTION	COUNTY	TOTAL SHEETS	SHEET NO.
745	108B-3	PIKE	69	55
CONTRACT NO. 72B61				
FED. ROAD DIST. NO. 6 ILLINOIS FED. AID PROJECT				