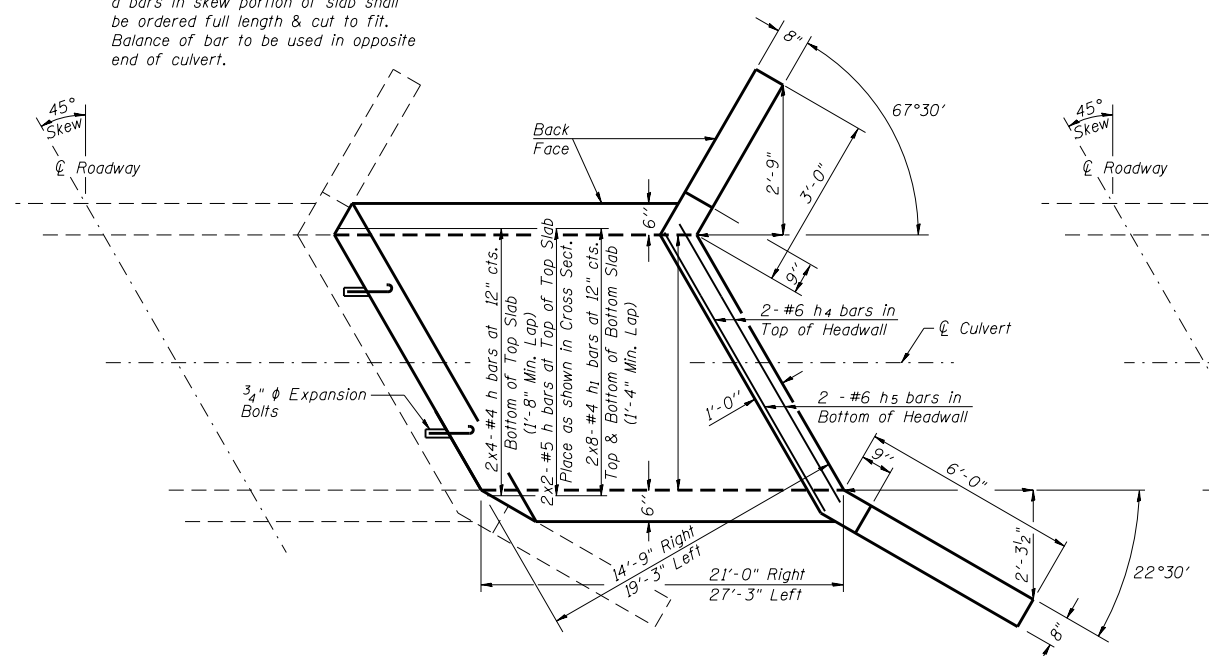
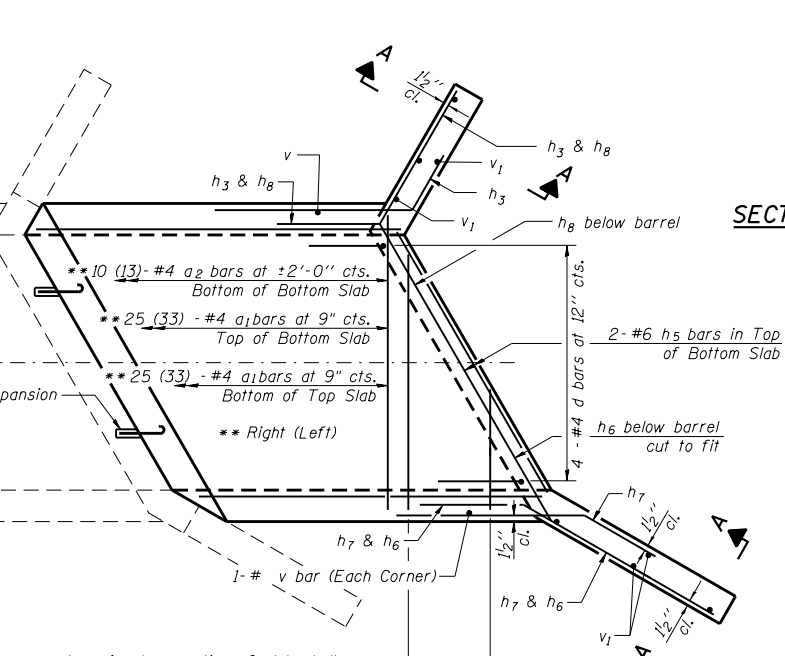


a bars in skew portion of slab shall be ordered full length & cut to fit. Balance of bar to be used in opposite end of culvert.

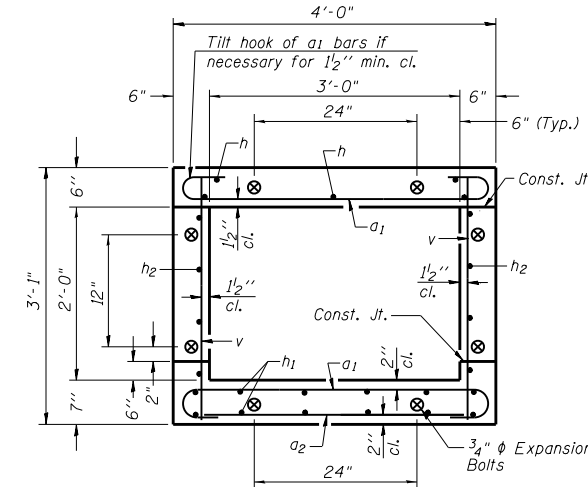


PLAN VIEW

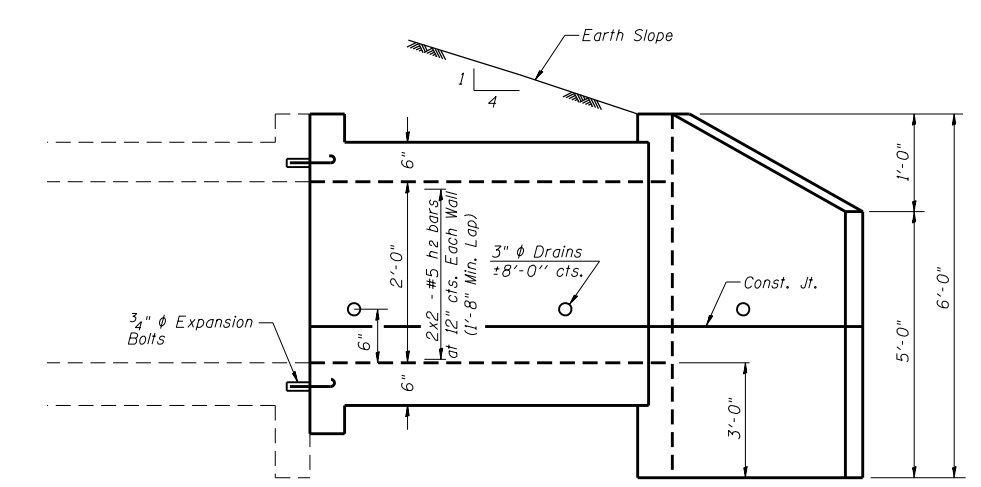
* a bars in skew portion of slab shall be ordered full length & cut to fit. Balance of bar to be used in opposite end of culvert.



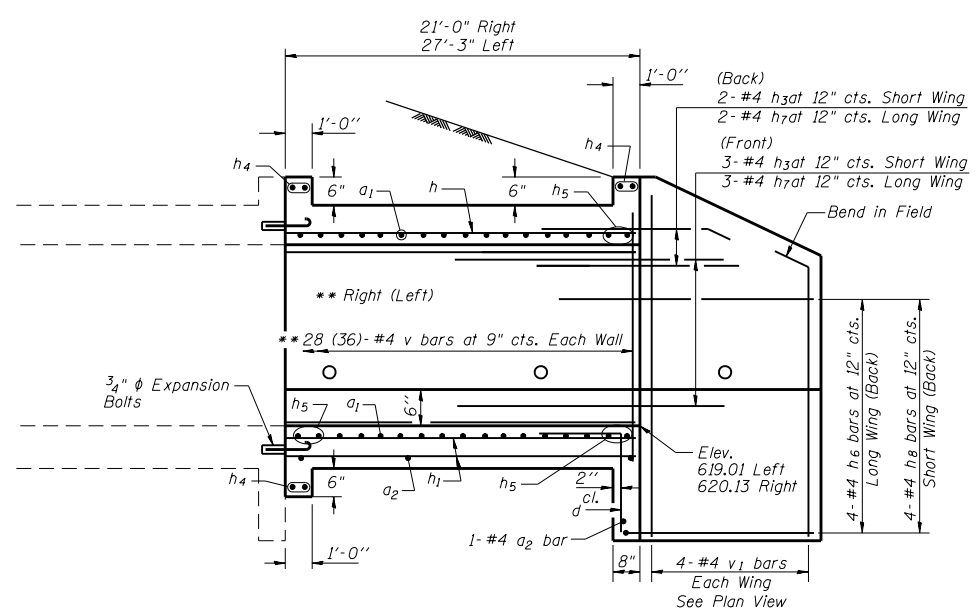
SECTION THRU HEADWALL
(Up Stream End Only)



SECTION THRU BARREL



PROFILE VIEW

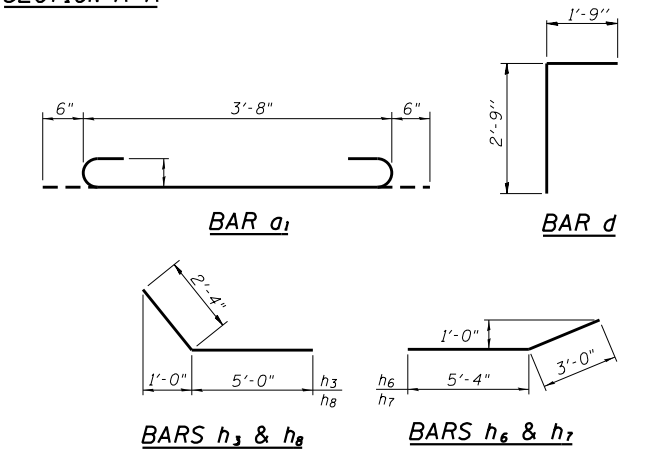


SECTION A-A

BILL OF MATERIAL

Bar	No.	Size	Length	Shape
a ₁	116	#4	4'-8"	U
a ₂	23	#4	3'-9"	U
d	8	#4	4'-6"	L
h	24	#4	14'-4"	—
h ₁	32	#4	14'-4"	—
h ₂	16	#5	14'-4"	—
h ₃	10	#4	7'-4"	—
h ₄	12	#6	5'-3"	—
h ₅	12	#6	5'-3"	—
h ₆	10	#4	7'-4"	—
h ₇	10	#4	7'-4"	—
h ₈	10	#4	7'-4"	—
v	132	#4	2'-8"	—
v ₁	16	#4	7'-8"	—
				3/4" φ Expansion Bolts Each
				Concrete Box Culverts Cu. Yd.
				Reinforcement Bars Pound

* Cut h bars in field to fit Right side extension.



NOTE: RIGHT EXTENSION SHOWN, LEFT EXTENSION OPPOSITE PLAN.