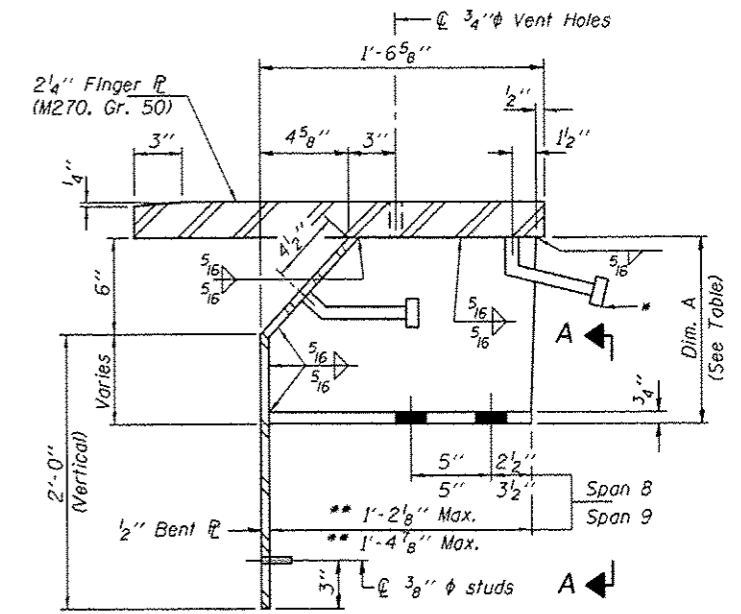
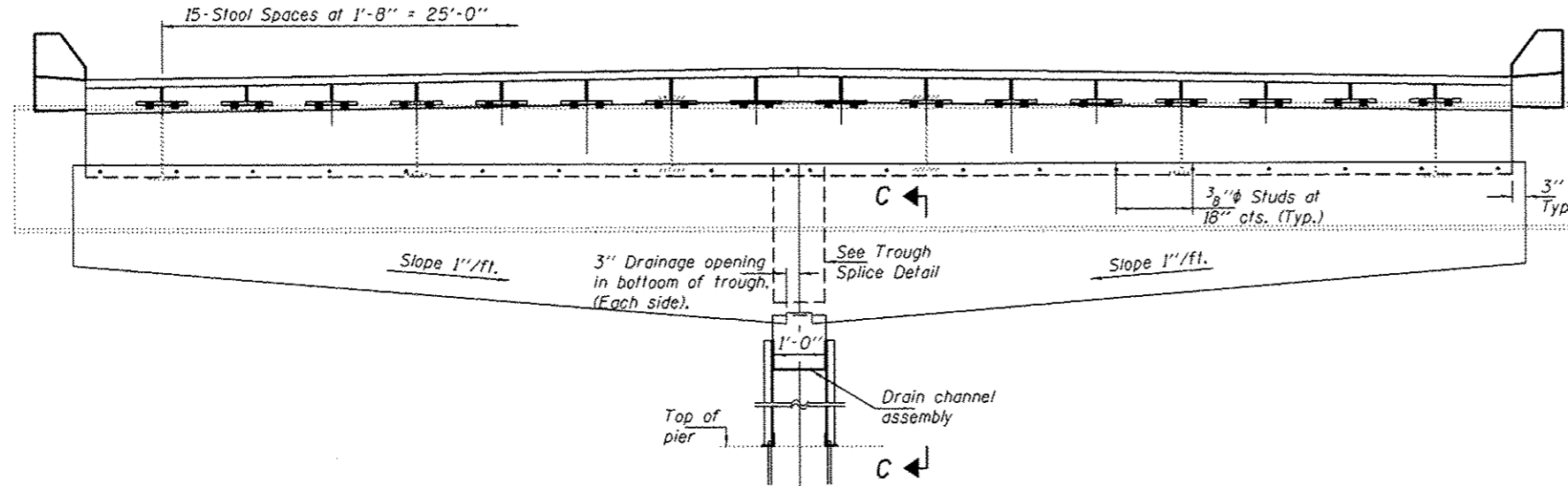


CROSS SECTION THRU SPAN 8



STOOL "A" DETAILS AT PIER 8

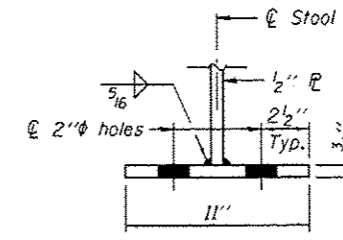


CROSS SECTION THRU SPAN 9

DIMENSION "A" AT PIER 8

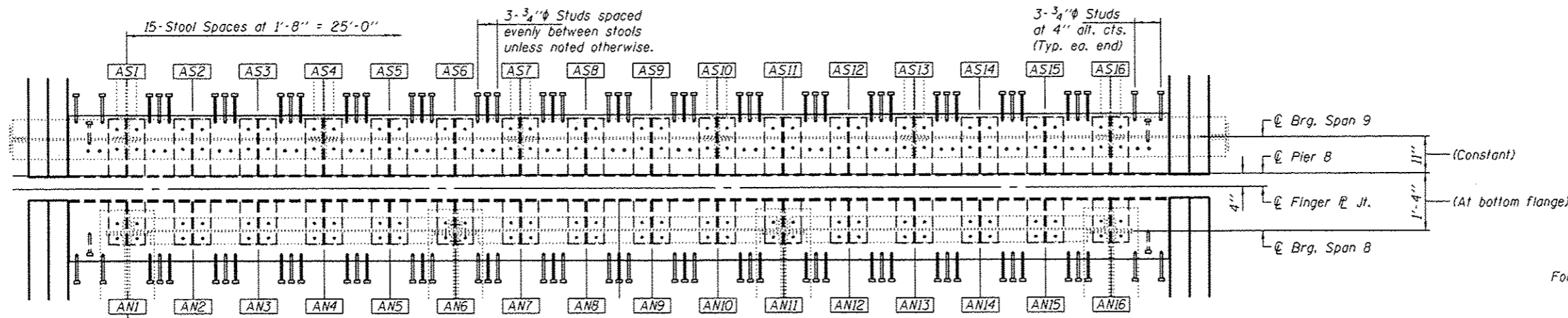
\* 3/4" x 8" granular or solid flux filled headed studs conforming to Art. 1006.32 of the Std. Specs. automatically end welded.  
 \*\* Dimension varies at stool heights < 6"

Stool No.	Dim. A	Stool No.	Dim. A
AN1	7"	AS1	4 3/16"
AN2	9 7/16"	AS2	4 1/2"
AN3	9 3/4"	AS3	4 13/16"
AN4	10 1/16"	AS4	5 1/8"
AN5	10 3/8"	AS5	5 7/16"
AN6	8 9/16"	AS6	5 3/4"
AN7	11"	AS7	6 1/16"
AN8	11 5/16"	AS8	6 3/8"
AN9	11 5/16"	AS9	6 3/8"
AN10	11"	AS10	6 1/16"
AN11	8 9/16"	AS11	5 3/4"
AN12	10 3/8"	AS12	5 7/16"
AN13	10 1/16"	AS13	5 1/8"
AN14	9 3/4"	AS14	4 13/16"
AN15	9 7/16"	AS15	4 1/2"
AN16	7"	AS16	4 3/16"



VIEW A-A

Dimensions are at center bearing.  
 See Section B-B on sheet 3 of 14 for longitudinal slope.



PLAN VIEW AT PIER 8

For Sec. C-C. see sheet 9 of 14.