

EXIST. CURVE SBC1
 PI STA. = 642+09.31
 $\Delta = 15^\circ 45' 00''$ (RT)
 $D = 1^\circ 36' 19''$
 $R = 3,569.13'$
 $T = 493.67'$
 $L = 981.11'$
 $E = 33.98'$
 $e = \text{-----}$
 $T.R. = \text{-----}$
 $S.E. \text{ RUN} = \text{-----}$
 P.C. STA. = 637+15.64
 P.T. STA. = 646+96.75

EXIST. CURVE SBC2
 PI STA. = 667+33.51
 $\Delta = 80^\circ 58' 21''$ (LT)
 $D = 8^\circ 08' 59''$
 $R = 703.05'$
 $T = 600.17'$
 $L = 993.58'$
 $E = 221.33'$
 $e = \text{-----}$
 $T.R. = \text{-----}$
 $S.E. \text{ RUN} = \text{-----}$
 P.C. STA. = 661+33.34
 P.T. STA. = 671+26.91

EXIST. CURVE NBC1
 PI STA. = 640+14.20
 $\Delta = 15^\circ 38' 13''$ (RT)
 $D = 1^\circ 21' 46''$
 $R = 4,204.38'$
 $T = 577.31'$
 $L = 1,147.44'$
 $E = 39.45'$
 $e = \text{-----}$
 $T.R. = \text{-----}$
 $S.E. \text{ RUN} = \text{-----}$
 P.C. STA. = 634+36.89
 P.T. STA. = 645+84.33

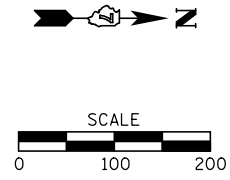
EXIST. CURVE NBC1
 PI STA. = 665+83.55
 $\Delta = 42^\circ 37' 12''$ (LT)
 $D = 3^\circ 28' 21''$
 $R = 1,649.97'$
 $T = 643.63'$
 $L = 1,227.35'$
 $E = 121.09'$
 $e = \text{-----}$
 $T.R. = \text{-----}$
 $S.E. \text{ RUN} = \text{-----}$
 P.C. STA. = 659+39.92
 P.T. STA. = 671+67.26

BM# 1 = BRASS PLUG ON SE CORNER OF WINGWALL,
 N.B. SN 058-0008 OVER IL 105
 STA. 664+18.36
 O/S = 21.98' RT
 EL. = 640.565

BM# 2 = CHISELED "X" IN TOP FLANGE BOLT NEXT TO "M" IN
 MUELLER ON FIRE HYDRANT AT NORTHEAST CORNER OF
 1ST DRIVE & IL 105
 STA. 665+83.55
 O/S = 21.98' RT
 EL. = 629.800

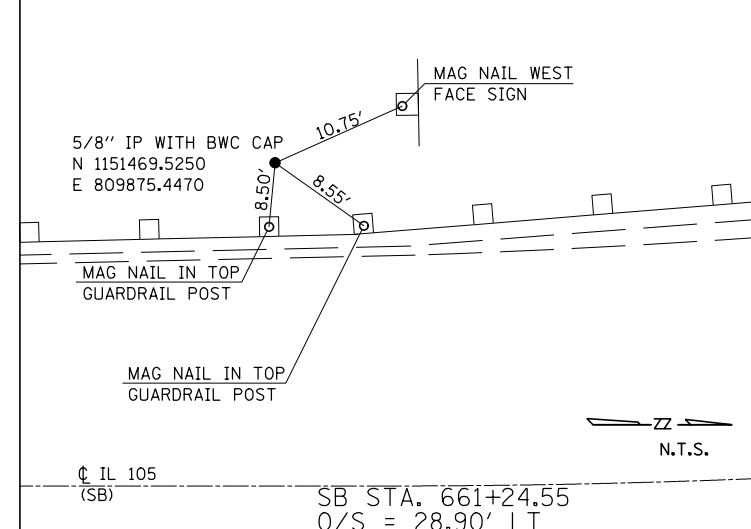
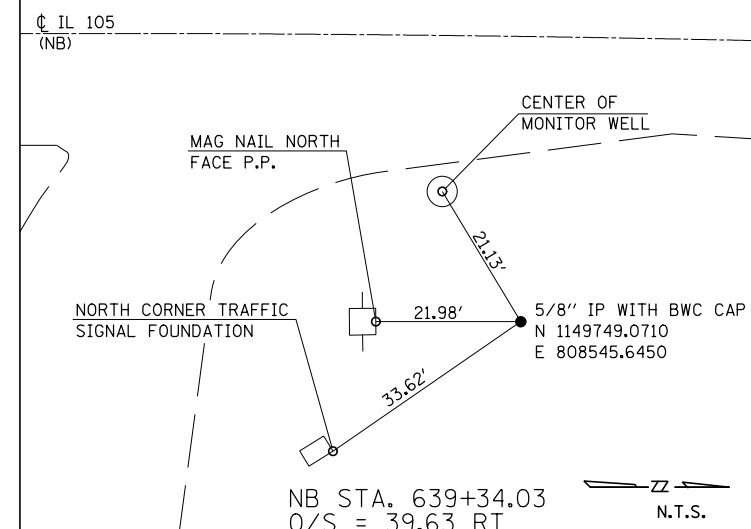
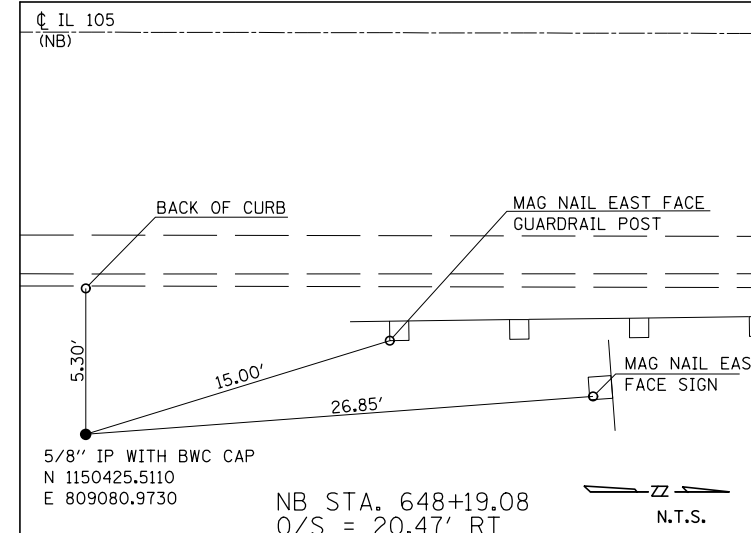
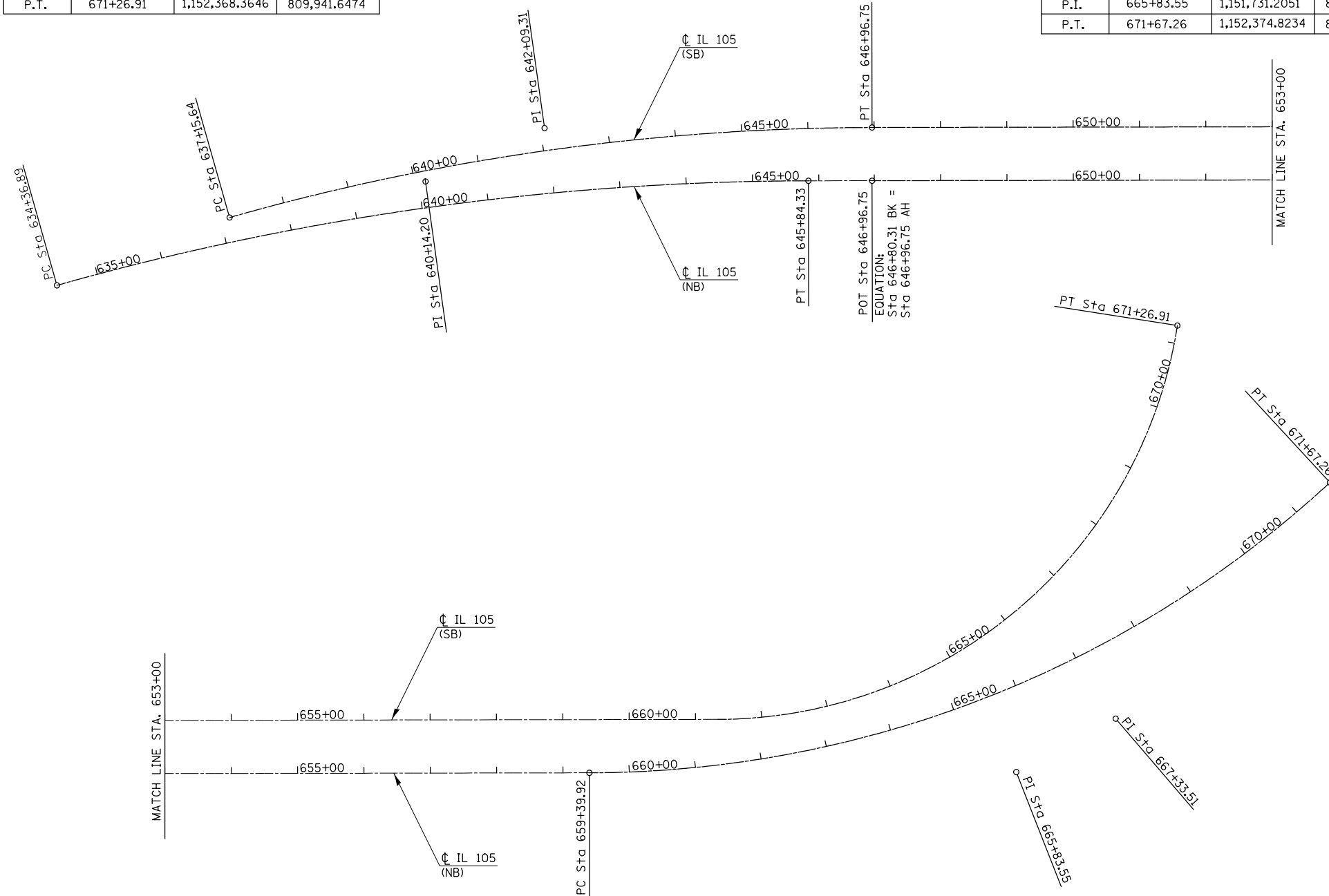
BM# SLDG = CHISELED "□" ON NORTHEAST LEDGE OF CONCRETE
 SLOPEWALL AT SOUTH ABUTMENT OF NORTHBOUND LANES
 STA. 664+18.36
 O/S = 21.98' RT
 EL. = 614.055

BM# NLDG = CHISELED "□" ON SOUTHEAST LEDGE OF CONCRETE
 SLOPEWALL AT NORTH ABUTMENT OF NORTHBOUND LANES
 STA. 664+18.36
 O/S = 21.98' RT
 EL. = 614.065



SB LANES	STATION (FEET)	NORTHING (FEET)	EASTING (FEET)
P.C.	637+15.64	1,149,604.0369	808,362.1054
P.I.	642+09.31	1,150,043.1602	808,587.6729
P.T.	646+96.75	1,150,404.5686	808,923.9674
P.C.	661+33.34	1,151,456.2684	809,902.5856
P.I.	667+33.51	1,151,895.6436	810,311.4291
P.T.	671+26.91	1,152,368.3646	809,941.6474

NB LANES	STATION (FEET)	NORTHING (FEET)	EASTING (FEET)
P.C.	634+36.89	1,149,344.0077	808,259.2391
P.I.	640+14.20	1,149,857.0075	808,524.0359
P.T.	645+84.33	1,150,279.6471	808,917.3067
P.O.T.	646+96.75	1,150,349.9102	808,982.6873
P.C.	659+39.92	1,151,260.0145	809,829.5494
P.I.	665+83.55	1,151,731.2051	810,267.9974
P.T.	671+67.26	1,152,374.8234	810,271.5754



FILE NAME =	USER NAME = *USER*	DESIGNED -	REVISED -
*FILE#		DRAWN -	REVISED -
	PLOT SCALE = *SCALE*	CHECKED -	REVISED -
	PLOT DATE = *DATE*	DATE -	REVISED -

**STATE OF ILLINOIS
 DEPARTMENT OF TRANSPORTATION**

HORIZONTAL ALIGNMENT, BENCHMARKS & SURVEY TIES

SCALE: SHEET NO. 1 OF 1 SHEETS STA. TO STA.

F.A.P. RTE.	SECTION	COUNTY	TOTAL SHEETS	SHEET NO.
710	(48X-B-2)BR & (48BR)BR	MACON	144	17
CONTRACT NO. 74438				
ILLINOIS FED. AID PROJECT				