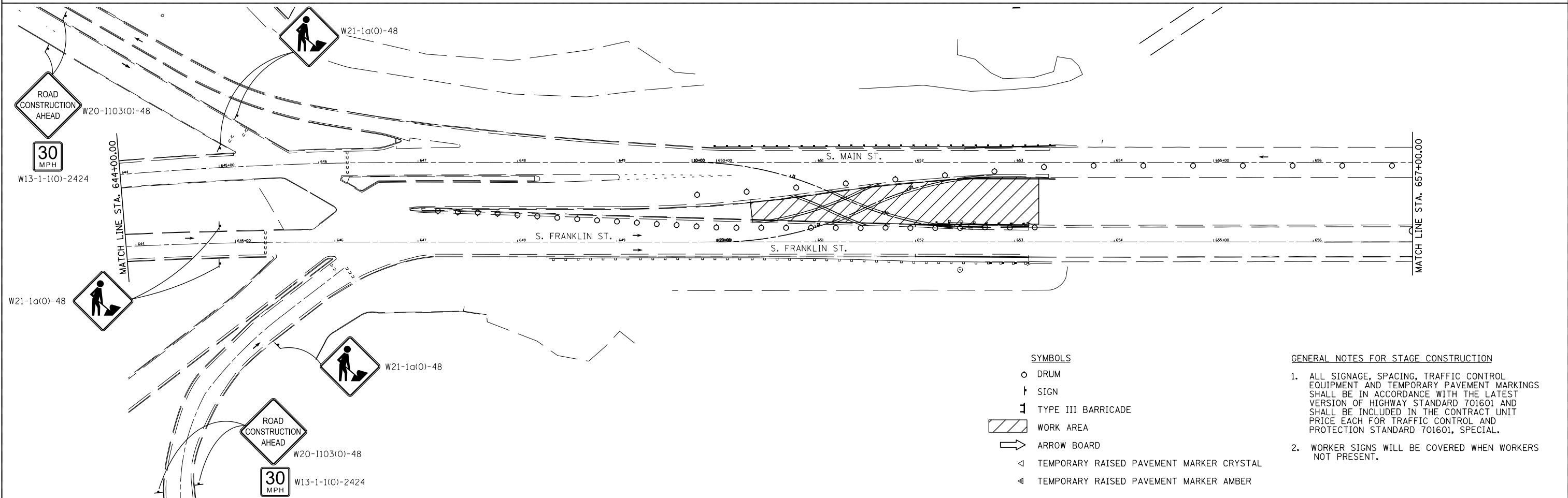
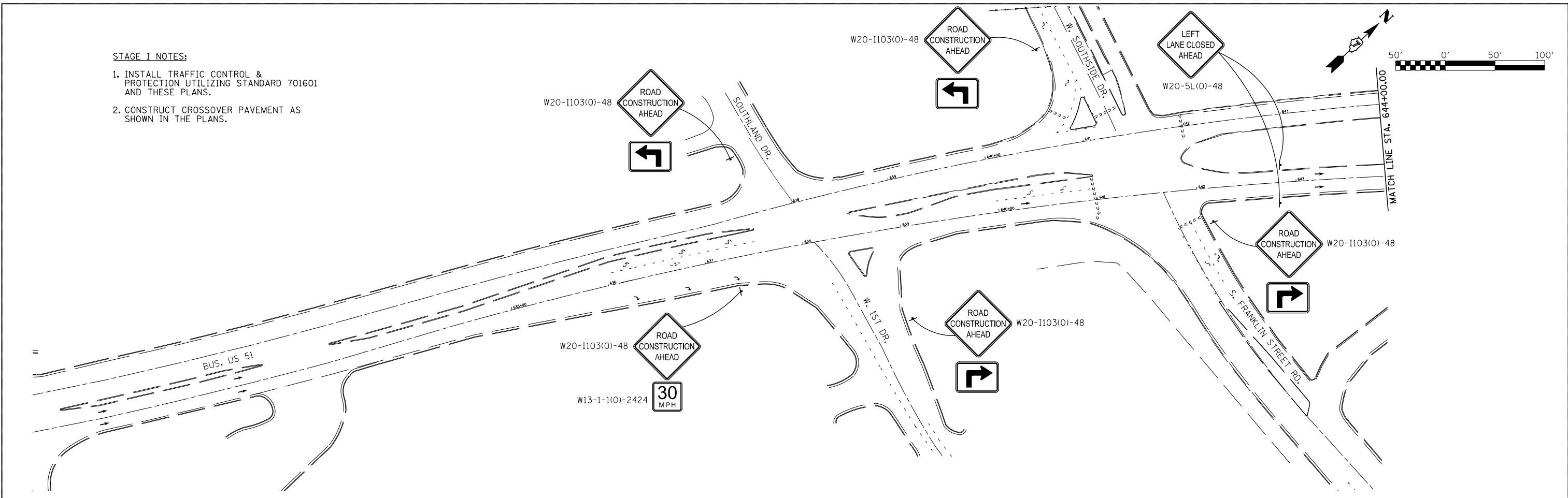


**STAGE I NOTES:**

1. INSTALL TRAFFIC CONTROL & PROTECTION UTILIZING STANDARD 701601 AND THESE PLANS.
2. CONSTRUCT CROSSOVER PAVEMENT AS SHOWN IN THE PLANS.



- SYMBOLS**
- DRUM
  - † SIGN
  - ⊥ TYPE III BARRICADE
  - ▨ WORK AREA
  - ➡ ARROW BOARD
  - ◁ TEMPORARY RAISED PAVEMENT MARKER CRYSTAL
  - ◄ TEMPORARY RAISED PAVEMENT MARKER AMBER

**GENERAL NOTES FOR STAGE CONSTRUCTION**

1. ALL SIGNAGE, SPACING, TRAFFIC CONTROL EQUIPMENT AND TEMPORARY PAVEMENT MARKINGS SHALL BE IN ACCORDANCE WITH THE LATEST VERSION OF HIGHWAY STANDARD 701601 AND SHALL BE INCLUDED IN THE CONTRACT UNIT PRICE EACH FOR TRAFFIC CONTROL AND PROTECTION STANDARD 701601, SPECIAL.
2. WORKER SIGNS WILL BE COVERED WHEN WORKERS NOT PRESENT.

FILE NAME = *FILEL*	USER NAME = *USER*	DESIGNED -	REVISED -	<b>STATE OF ILLINOIS DEPARTMENT OF TRANSPORTATION</b>	<b>STAGE I TRAFFIC CONTROL</b>			F.A.P. RTE.	SECTION	COUNTY	TOTAL SHEETS	SHEET NO.
	PLOT SCALE = *SCALE*	DRAWN -	REVISED -		SCALE:	SHEET NO. 1 OF 9 SHEETS	STA.	710	(49-X-B-2)BR & (48BR)BR	MACON	144	22
	PLOT DATE = *DATE*	CHECKED -	REVISED -		TO STA.	TO STA. 657+00.00		CONTRACT NO. 74438				
		DATE -	REVISED -		ILLINOIS FED. AID PROJECT							