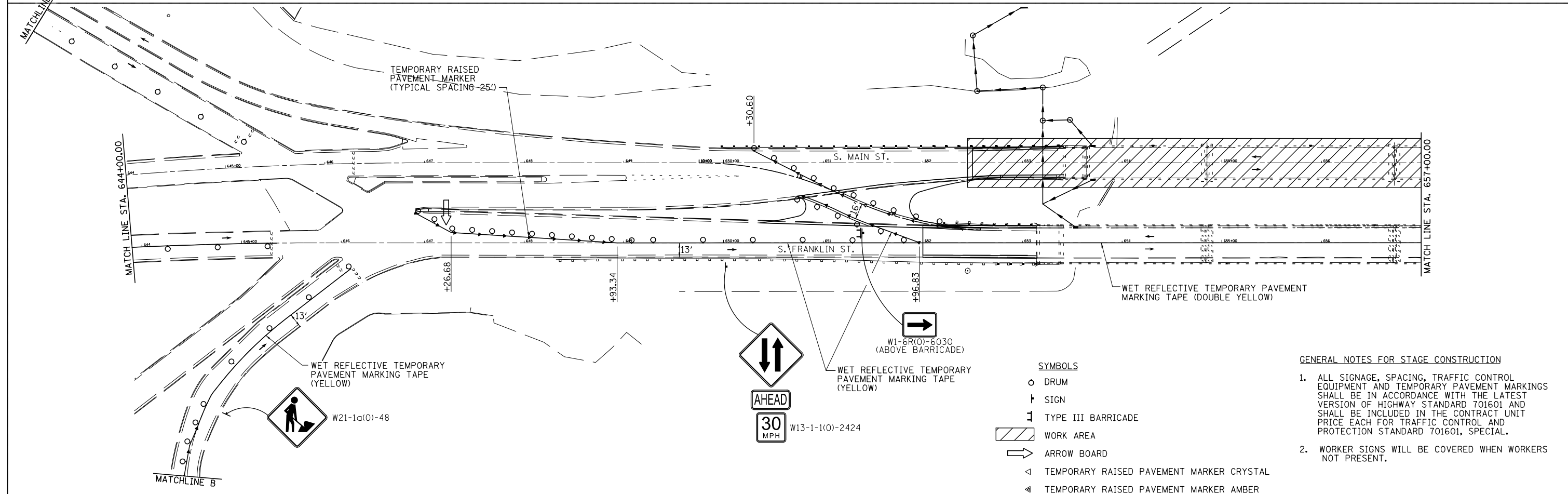
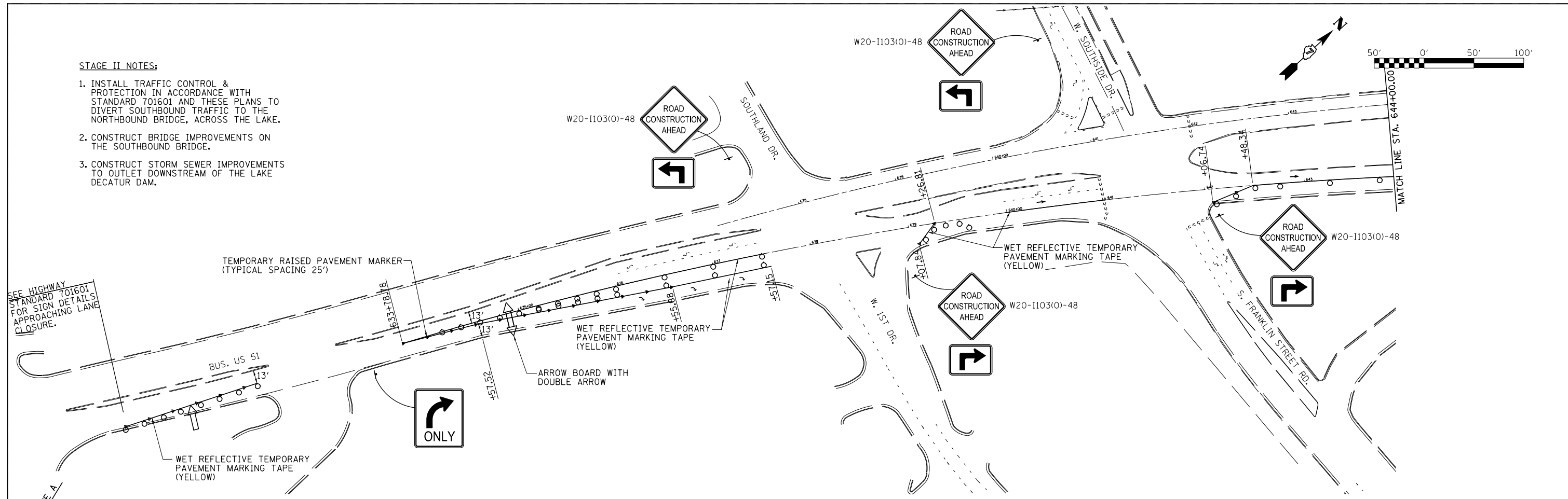


**STAGE II NOTES:**

1. INSTALL TRAFFIC CONTROL & PROTECTION IN ACCORDANCE WITH STANDARD 701601 AND THESE PLANS TO DIVERT SOUTHBOUND TRAFFIC TO THE NORTHBOUND BRIDGE, ACROSS THE LAKE.
2. CONSTRUCT BRIDGE IMPROVEMENTS ON THE SOUTHBOUND BRIDGE.
3. CONSTRUCT STORM SEWER IMPROVEMENTS TO OUTLET DOWNSTREAM OF THE LAKE DECATUR DAM.

SEE HIGHWAY STANDARD 701601 FOR SIGN DETAILS APPROACHING LANE CLOSURE.



**SYMBOLS**

- DRUM
- † SIGN
- ≡ TYPE III BARRICADE
- ▨ WORK AREA
- ➔ ARROW BOARD
- ◁ TEMPORARY RAISED PAVEMENT MARKER CRYSTAL
- ◑ TEMPORARY RAISED PAVEMENT MARKER AMBER

**GENERAL NOTES FOR STAGE CONSTRUCTION**

1. ALL SIGNAGE, SPACING, TRAFFIC CONTROL EQUIPMENT AND TEMPORARY PAVEMENT MARKINGS SHALL BE IN ACCORDANCE WITH THE LATEST VERSION OF HIGHWAY STANDARD 701601 AND SHALL BE INCLUDED IN THE CONTRACT UNIT PRICE EACH FOR TRAFFIC CONTROL AND PROTECTION STANDARD 701601, SPECIAL.
2. WORKER SIGNS WILL BE COVERED WHEN WORKERS NOT PRESENT.

FILE NAME =	USER NAME = *USER*	DESIGNED -	REVISED -
*FILE#		DRAWN -	REVISED -
	PLOT SCALE = *SCALE*	CHECKED -	REVISED -
	PLOT DATE = *DATE*	DATE -	REVISED -

**STATE OF ILLINOIS  
DEPARTMENT OF TRANSPORTATION**

**STAGE II TRAFFIC CONTROL**

SCALE: SHEET NO. 4 OF 9 SHEETS STA. TO STA.

F.A.P. RTE.	SECTION	COUNTY	TOTAL SHEETS	SHEET NO.
710	(49-X-B-2)BR & (48BR)BR	MACON	144	25
CONTRACT NO. 74438				
ILLINOIS FED. AID PROJECT				