

- LEGEND**
- ▲ MANHOLE
  - ⊕ STORM SEWER
  - ⊙ INLET

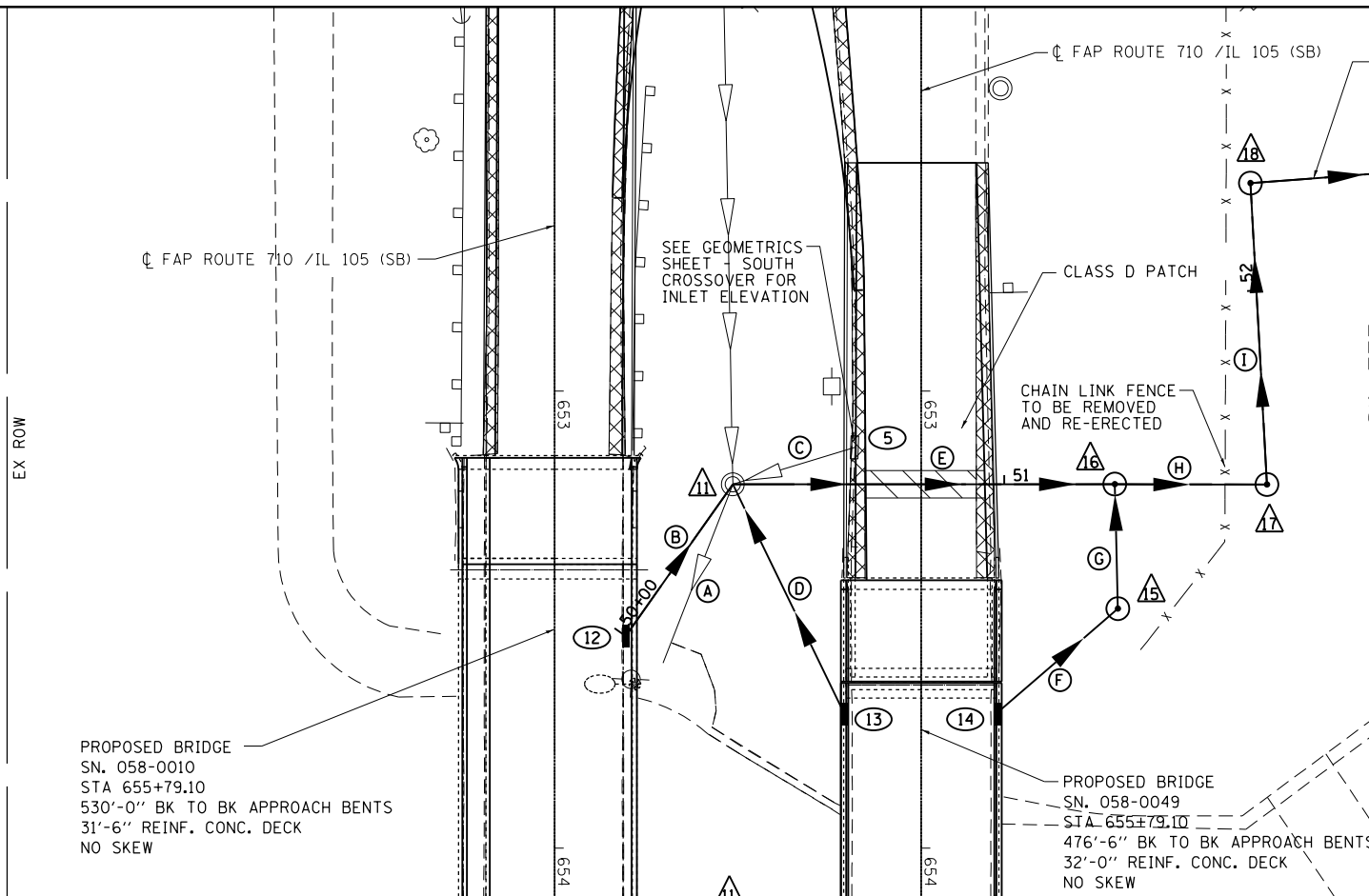


**STORM SEWER SCHEDULE**

NO.	STATION	* OFFSET	NORTHING	EASTING	STRUCTURE	RIM ELEVATION	INVERT ELEVATION
(A)	EXIST. 24" Ø SS CLA TY 2				TBR		
(B)	12" Ø SS CLA TY 2	40' @ -1.0%					
(C)	12" Ø SS CLA TY 2	25' @ -15.0%					
(D)	12" Ø SS CLA TY 2	55' @ -1.0%					
(E)	24" Ø SS CLA TY 3	80' @ -1.81%					
(F)	12" Ø SS CLA TY 2	30' @ -1.0%					
(G)	12" Ø SS CLA TY 2	30' @ -1.0%					
(H)	24" Ø SS CLA TY 3	30' @ -2.0%					
(I)	24" Ø SS CLA TY 2	65' @ -1.85%					
(J)	24" Ø SS CLA TY 2	56' @ -1.43%					
(K)	24" Ø SS CLA TY 2	48' @ -1.56%					

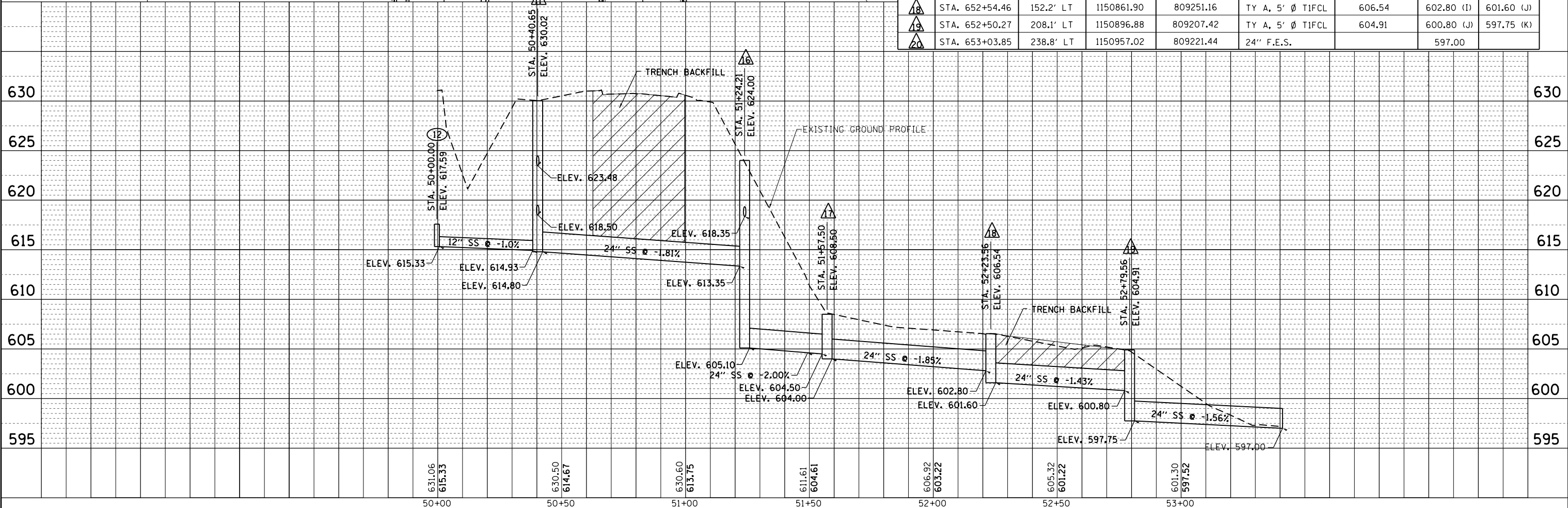
**MANHOLE & INLET SCHEDULE**

NO.	STATION	* OFFSET	NORTHING	EASTING	STRUCTURE	RIM ELEVATION	INVERT ELEVATION
▲11	STA. 653+20.38	39.0' LT	1150833.03	809378.97	RECONSTRUCT MANHOLE	630.02	618.50 (D) 623.48 (C) 614.93 (B) 614.80 (E)
⊙12	STA. 653+53.61	15.6' LT	1150841.40	809418.75	TY A, INLET	617.59	615.33
⊙13	STA. 653+70.69	63.4' LT	1150866.50	809395.35	TY A, INLET	621.09	619.07
⊙14	STA. 653+70.42	96.8' LT	1150909.06	809370.71	TY A, INLET	621.09	619.07
▲15	STA. 653+47.59	123.2' LT	1150910.33	809335.83	TY A, 5' Ø T1FCL	624.50	618.75 618.65
▲16	STA. 653+20.35	122.6' LT	1150889.93	809317.77	TY A, 5' Ø T1FCL	624.00	613.35 (E) 618.35 (G) 605.10 (H)
▲17	STA. 653+20.42	155.8' LT	1150912.65	809293.45	TY A, 5' Ø T1FCL	608.5	604.50 (H) 604.00 (I)
▲18	STA. 652+54.46	152.2' LT	1150861.90	809251.16	TY A, 5' Ø T1FCL	606.54	602.80 (I) 601.60 (J)
▲19	STA. 652+50.27	208.1' LT	1150896.88	809207.42	TY A, 5' Ø T1FCL	604.91	600.80 (J) 597.75 (K)
▲20	STA. 653+03.85	238.8' LT	1150957.02	809221.44	24" F.E.S.		597.00



PROPOSED BRIDGE  
SN. 058-0010  
STA 655+79.10  
530'-0" BK TO BK APPROACH BENTS  
31'-6" REINF. CONC. DECK  
NO SKEW

PROPOSED BRIDGE  
SN. 058-0049  
STA. 655+79.10  
476'-6" BK TO BK APPROACH BENTS  
32'-0" REINF. CONC. DECK  
NO SKEW



PLAN

DATE	
BY	
SURVEYED	
PLOTTED	
ALIGNED	
CHECKED	
DESIGNED	
FILE NAME	
NO.	

PROFILE

DATE	
BY	
SURVEYED	
PLOTTED	
GRADES CHECKED	
STRUCTURE	
NOTATIS	
NO.	