

**INDEX OF SHEETS**

- 1 General Plan and Elevation
- 2 General Notes and Bill of Material
- 3-5 Top of Slab Elevations
- 6 Top of South Approach Slab Elevations
- 7 Top of North Approach Slab Elevations
- 8 Superstructure
- 9-11 Superstructure Details
- 12 Vaulted Approach Slab
- 13 Vaulted Approach Slab Details
- 14 Preformed Joint Strip Seal
- 15 Modular Expansion Joint
- 16 Framing Plan
- 17 North Abutment Bearing Details
- 18 South Abutment Bearing Details
- 19 Concrete Removal Details
- 20 Abutment Backwall Details
- 21 Concrete Parapet Slipforming Option
- 22-23 Drainage System
- 24-39 Existing Bridge Plans

**GENERAL NOTES**

Fasteners shall be ASTM A325 Type I, mechanically galvanized bolts, bolts  $\frac{3}{4}$  in.  $\phi$ , holes  $\frac{13}{16}$  in.  $\phi$ , unless otherwise noted.

No field welding is permitted except as specified in the contract documents.

Reinforcement bars designated (E) shall be epoxy coated.

Prior to pouring the new concrete deck, all heavy or loose rust, loose mill scale, and other loose or potentially detrimental foreign material shall be removed from the surfaces in contact with concrete. Tightly adhered paint may remain unless otherwise noted. Removal shall be accomplished by methods that will not damage the steel and the cost will be included in the pay item covering removal of the existing concrete.

As directed by the Engineer, existing construction accessories welded to the top flange of girders shall be removed. The weld areas shall be ground flush and inspected for cracks using magnetic particle testing (MT) or dye penetrant testing (PT) by qualified personnel approved by the Engineer. Any cracks that can not be removed by grinding  $\frac{1}{4}$  in. deep shall be identified and reported to the Bureau of Bridges and Structures for further disposition. The cost of removing welded accessories, grinding and inspecting weld areas and grinding cracks will be paid for according to Article 109.04 of the Standard Specifications.

If the Contractor elects to use cantilever forming brackets on the exterior girders. The brackets shall be placed at the same locations as required for the hardwood blocks in Article 503.06(b) of the Standard Specifications. If additional cantilever forming brackets are required, hardwood blocking shall be wedged between the exterior and first interior beam at each of these additional bracket locations.

Plan dimensions and details relative to existing plans are subject to nominal construction variations. The Contractor shall field verify existing dimensions and details affecting new construction and make necessary approved adjustments prior to construction or ordering of materials. Such variations shall not be cause for additional compensation for a change in scope of the work, however, the Contractor will be paid for the quantity actually furnished at the unit price bid for the work.

Concrete Sealer shall be applied to the designated areas of the abutment hatched block and backwalls.

Cleaning and field painting of structural steel shall be done under a separate painting contract.

The existing structural steel coating contains lead. The Contractor shall take appropriate precautions to deal with the presence of lead on this project.

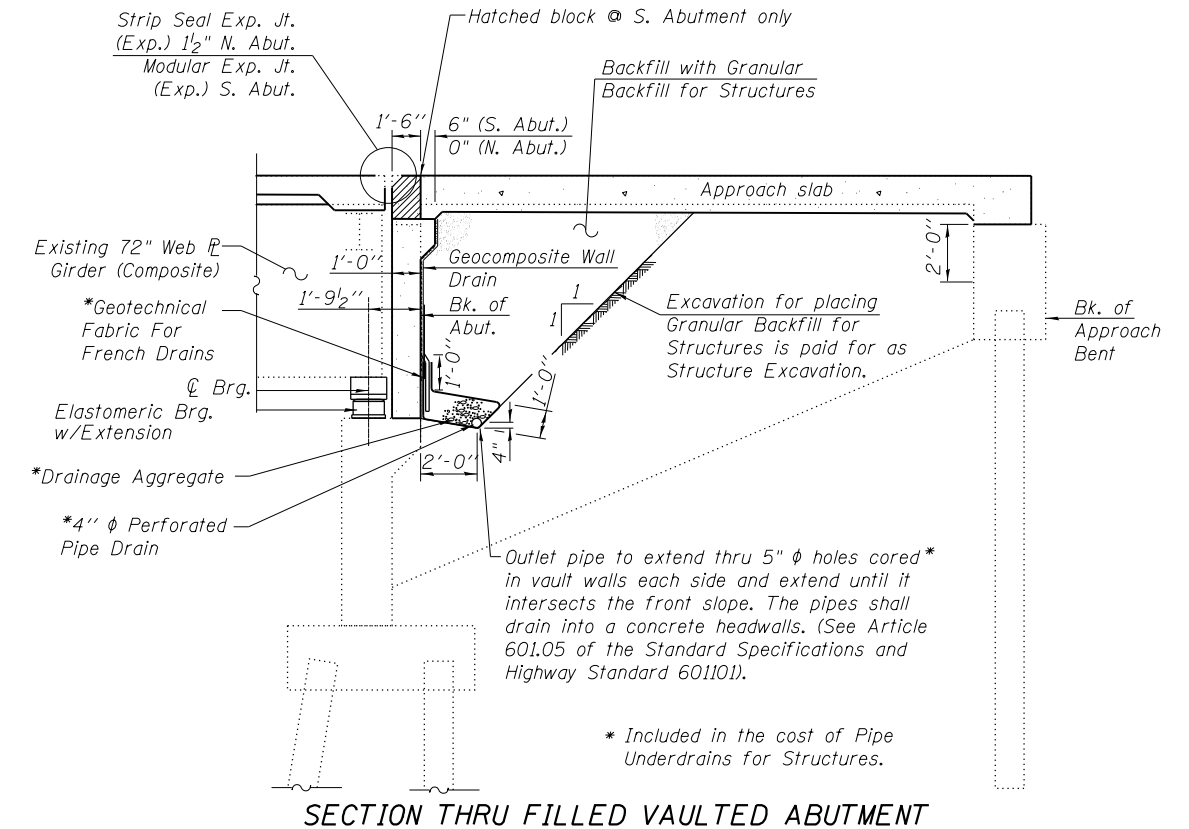
Slipforming of parapets is not allowed at parapet sections with light pedestals.

All new structural steel for modular joint shall be shop painted with an inorganic zinc rich primer per AASHTO M 300, Type 1.

**TOTAL BILL OF MATERIAL**

ITEM	UNIT	SUPER	SUB	TOTAL
Granular Backfill for Structures	Cu Yd	91		91
Concrete Removal	Cu. Yd.		95.2	95.2
Removal of Existing Concrete Deck No. 2	Each	1		1
Structure Excavation	Cu. Yd.		91	91
Floor Drains	Each	56		56
Concrete Structures	Cu. Yd.		17.4	17.4
Concrete Superstructure	Cu. Yd.	607.6		607.6
Bridge Deck Grooving	Sq. Yd.	1,568		1,568
* Protective Coat	Sq. Yd.	2,085		2,085
Furnishing and Erecting Structural Steel	Pound		2,524	2,524
Stud Shear Connectors	Each	3,465		3,465
Reinforcement Bars, Epoxy Coated	Pound	129,855	2,640	132,495
Name Plates	Each	1		1
Preformed Joint Strip Seal	Foot	34		34
Elastomeric Bearing Assembly, Type I	Each		5	5
Elastomeric Bearing Assembly, Type III	Each		5	5
Anchor Bolts, $\frac{5}{8}$ "	Each		40	40
Concrete Sealer	Sq Ft	520		520
Geocomposite Wall Drain	Sq Yd	49		49
Pipe Underdrains for Structures 4"	Foot	161		161
Jack and Remove Existing Bearings	Each		10	10
Modular Expansion Joint 6"	Foot	34		34
Drainage System, No. 2	Each	1		1

\* Apply on new concrete only



**SECTION THRU FILLED VAULTED ABUTMENT**

STATION 655+79.10  
REBUILT 20\_\_ BY  
STATE OF ILLINOIS  
F.A.P. 710 SEC. (48X-B-2)BR & (48BR)BR  
LOADING HS20-44  
STR. NO. 058-0049

**NAME PLATE**

See Std. 515001

Existing Name Plate shall be cleaned and relocated next to new Name Plate.  
Cost included with Name Plates.

BLANK, WESSELINK, COOK & ASSOCIATES DECATUR, ILLINOIS ENGINEERS - CONSULTANTS DESIGN FIRM NO. 184000894

FILE NAME =	USER NAME =	DESIGNED <i>PBB</i>	REVISED -	STATE OF ILLINOIS DEPARTMENT OF TRANSPORTATION	GENERAL NOTES AND BILL OF MATERIAL STRUCTURE NO. 058-0049	F.A.P. RTE.	SECTION	COUNTY	TOTAL SHEETS	SHEET NO.
	CHECKED <i>MCB</i>	REVISED -	710			(48X-B-2)BR & (48BR)BR	MACON	144	40	
PLOT SCALE =	DRAWN <i>MLO</i>	REVISED -		CONTRACT NO. 74438						
PLOT DATE =	CHECKED <i>PBB/MCB</i>	REVISED -		SHEET NO. 2 OF 39 SHEETS						
ILLINOIS FED. AID PROJECT										