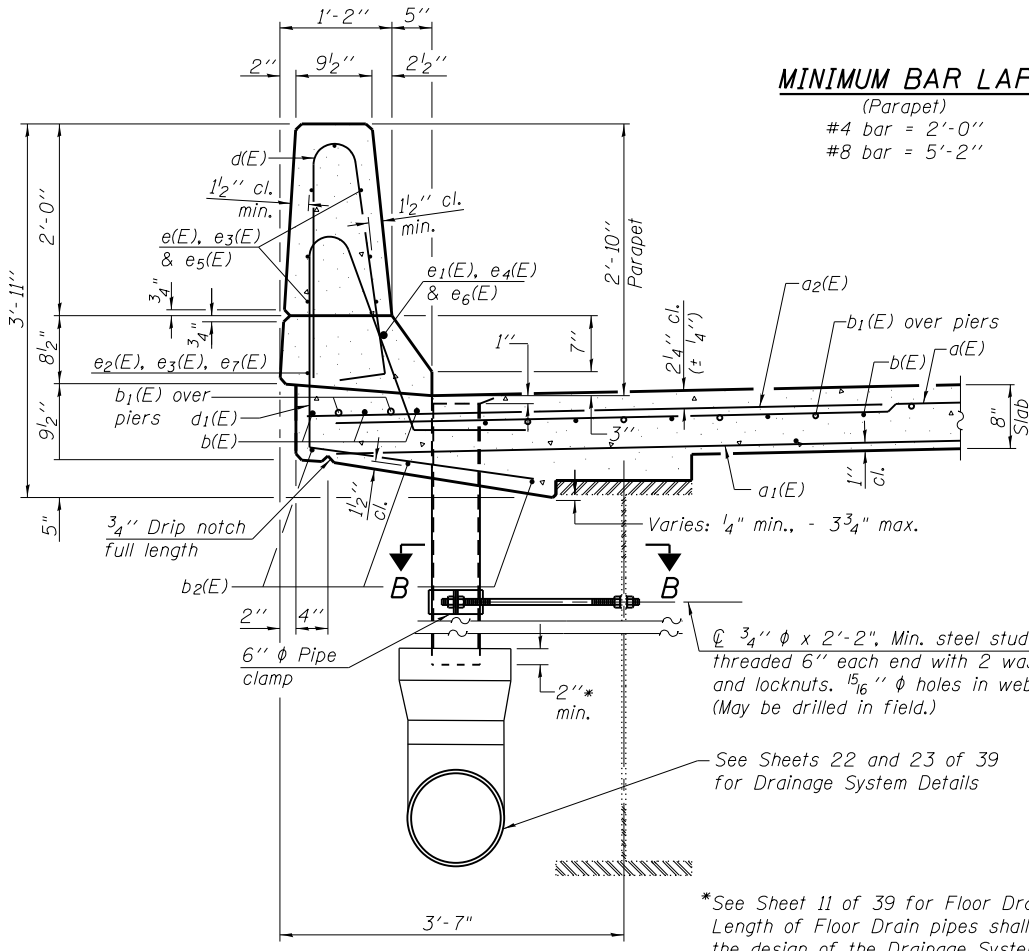


INSIDE ELEVATION OF WEST PARAPET
(Symmetric about ϕ of Structure)
(Similar for East Parapet)

**SUPERSTRUCTURE
BILL OF MATERIAL**

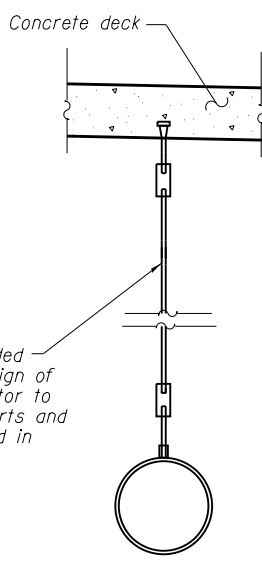
Bar	No.	Size	Length	Shape
d(E)	642	#5	34'-4"	—
a1(E)	516	#5	33'-2"	—
a2(E)	648	#6	6'-6"	—
a3(E)	32	#6	6'-10"	U
a4(E)	8	#6	34'-4"	—
b(E)	722	#5	25'-1"	—
b1(E)	210	#6	34'-1"	—
b2(E)	540	#5	26'-4"	—
d(E)	940	#5	5'-7"	L
d1(E)	940	#5	7'-11"	L
d2(E)	9	#6	4'-5"	L
d3(E)	15	#6	8'-11"	U
e(E)	168	#4	16'-6"	—
e1(E)	20	#8	24'-5"	—
e2(E)	20	#4	21'-10"	—
e3(E)	64	#4	19'-9"	—
e4(E)	8	#8	19'-9"	—
e5(E)	126	#4	16'-2"	—
e6(E)	12	#8	29'-0"	—
e7(E)	12	#4	26'-4"	—
x(E)	48	#5	6'-1"	U
Reinforcement Bars, Epoxy Coated		Pound	113,400	
Concrete Superstructure		Cu. Yd.	529.4	
Floor Drains		Each	56	

MINIMUM BAR LAP
(Parapet)
#4 bar = 2'-0"
#8 bar = 5'-2"

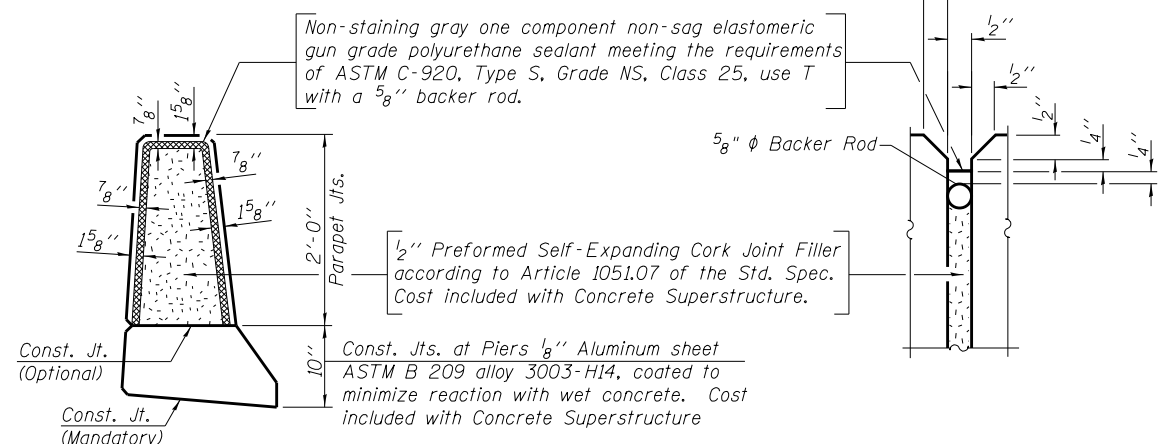


SECTION THRU PARAPET

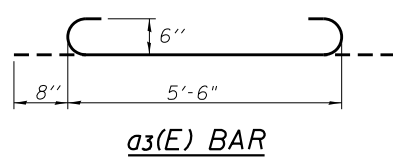
*See Sheet 11 of 39 for Floor Drain details. Length of Floor Drain pipes shall be set in the design of the Drainage System. Contractor to coordinate.



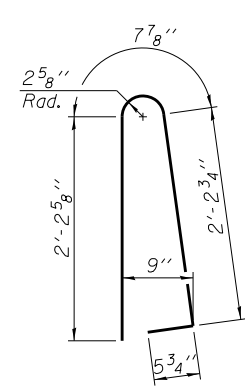
PIPE HANGAR DETAIL



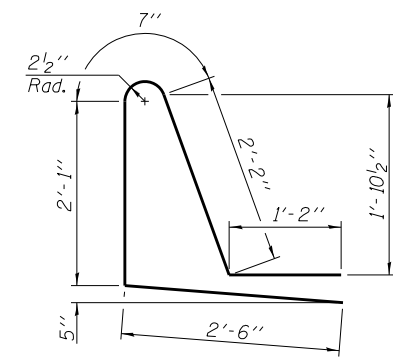
PARAPET JOINT DETAILS



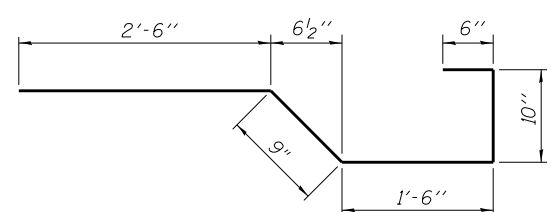
a3(E) BAR



BAR d(E)



BAR d1(E)



BAR x(E)

BLANK, WESSELINK, COOK & ASSOCIATES

DECATUR, ILLINOIS ENGINEERS - CONSULTANTS

DESIGN FIRM NO. 184000894

STATE OF ILLINOIS
DEPARTMENT OF TRANSPORTATION

SUPERSTRUCTURE DETAILS
STRUCTURE NO. 058-0049

SHEET NO. 9 OF 39 SHEETS

F.A.P. RTE.	SECTION	COUNTY	TOTAL SHEETS	SHEET NO.
710	(48X-B-2)BR & (48BR)BR	MACON	144	47
CONTRACT NO. 74438				

ILLINOIS FED. AID PROJECT