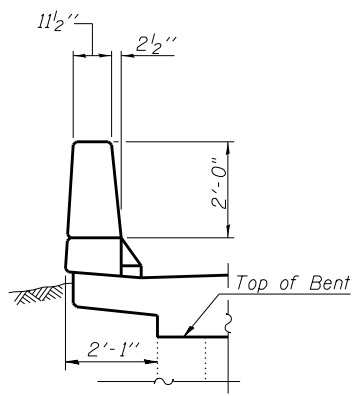
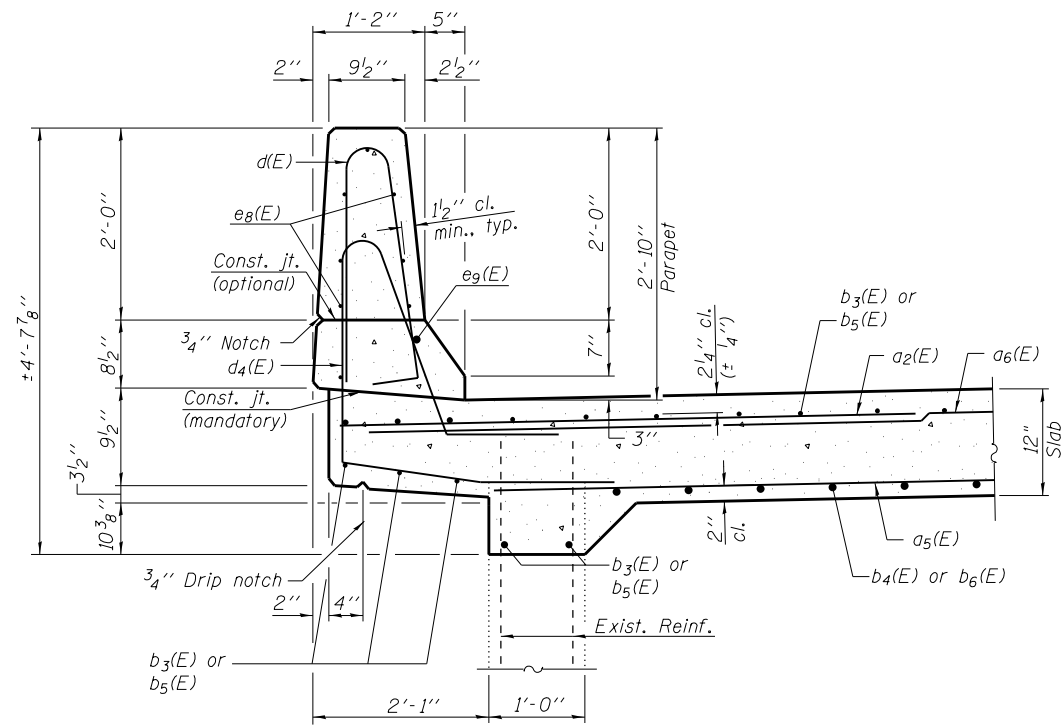


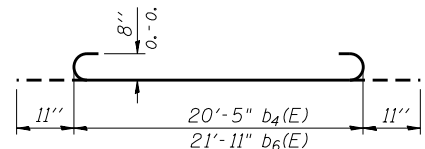
INSIDE ELEVATION OF PARAPET



VIEW H-H



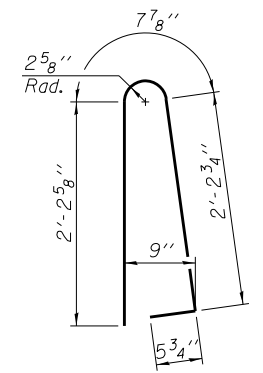
SECTION THRU PARAPET



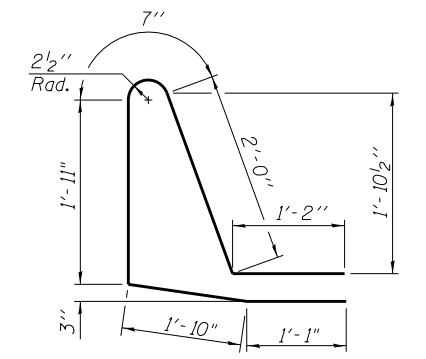
BAR b4(E) or b6(E)

**TWO APPROACH SLABS
BILL OF MATERIAL**

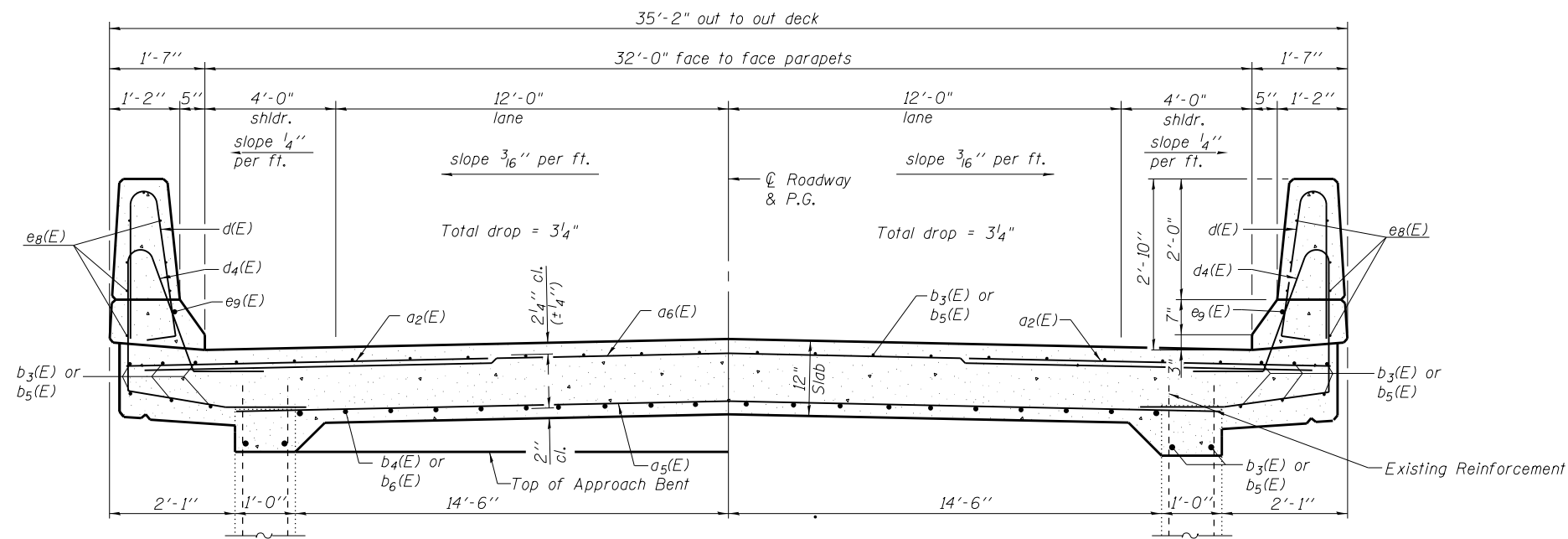
Bar	No.	Size	Length	Shape
a2(E)	92	#6	6'-6"	—
a5(E)	66	#6	30'-9"	—
a6(E)	31	#5	33'-9"	—
b3(E)	38	#5	20'-5"	—
b4(E)	59	#8	22'-3"	—
b5(E)	34	#5	21'-11"	—
b6(E)	59	#8	23'-9"	—
d(E)	100	#5	5'-7"	—
d4(E)	100	#5	8'-11"	—
e8(E)	32	#4	21'-11"	—
e9(E)	4	#8	21'-11"	—
Reinforcement Bars, Epoxy Coated			Pound	16,090
Concrete Superstructure			Cu. Yd.	78.2



BAR d(E)



BAR d4(E)



CROSS SECTION

BLANK, WESSELINK, COOK & ASSOCIATES DECATUR, ILLINOIS ENGINEERS - CONSULTANTS DESIGN FIRM NO. 184000894

FILE NAME =	USER NAME =	DESIGNED <i>PBB</i>	REVISD -
		CHECKED <i>MCB</i>	REVISD -
		DRAWN <i>MLO</i>	REVISD -
		CHECKED <i>PBB/MCB</i>	REVISD -

**STATE OF ILLINOIS
DEPARTMENT OF TRANSPORTATION**

**VAULTED APPROACH SLAB DETAILS
STRUCTURE NO. 058-0049**

SHEET NO. 13 OF 39 SHEETS

F.A.P. RTE.	SECTION	COUNTY	TOTAL SHEETS	SHEET NO.
710	(48X-B-2)BR & 148BR1BR	MACON	144	51
CONTRACT NO. 74438				
ILLINOIS FED. AID PROJECT				