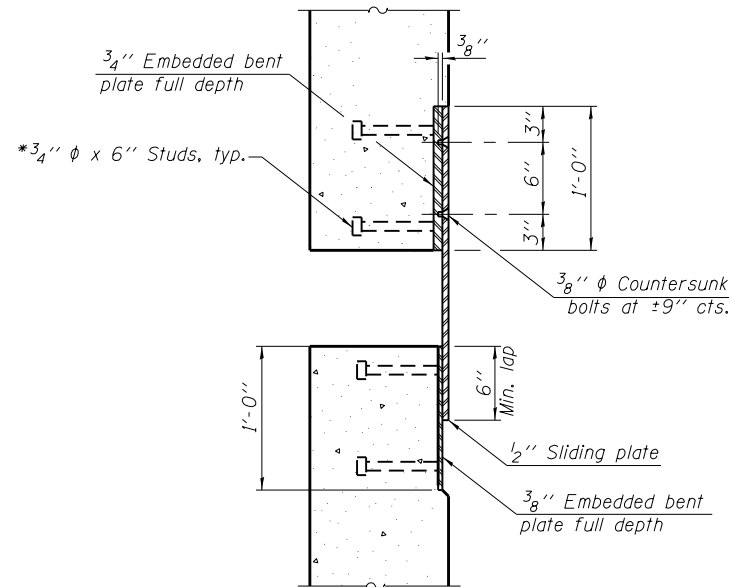


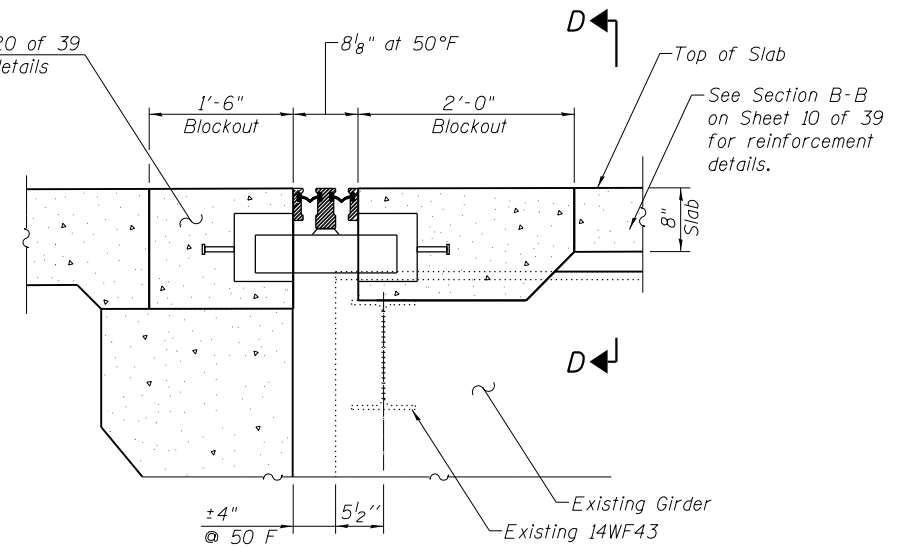
SECTION A-A



SECTION B-B

* Granular or solid flux filled headed studs conforming to Article 1006.32 of the Std. Specs., automatically end welded.

See Sheet 13 and 20 of 39 for reinforcement details



SECTION C-C

Notes:

Modular expansion joints shall be assembled in their final relative position with the ends in place for shop inspection and acceptance.

The manufacturer's recommended installation and fabrication methods shall be followed as approved by the Engineer.

Parapet plates, Sidewalk plates, shims, stools, brackets, anchorage studs, hardware and any additional reinforcement are included in the cost of Modular Expansion Joint 6".

The modular expansion joint system shall be capable of handling 2 1/2" of longitudinal movement either direction from 50°F (5" total).

Support boxes shall be rigidly attached to diaphragms and backwall by adjustable brackets, stools or shims.

Prior to ordering stools or shims, the Contractor shall verify in the field all top of steel elevations.

All steel components shall be galvanized after fabrication according to Article 520.03 of the Standard Specifications.

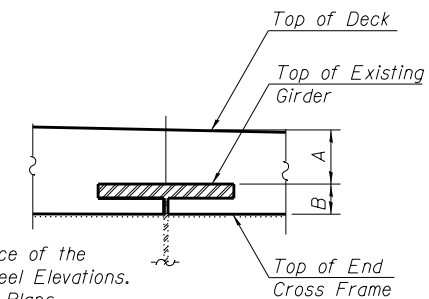
See Guide Bridge Special Provision for Modular Expansion Joint.

Beam Number	Dim. A	Dim. B
1	10"	3 3/4"
2	9 5/8"	5 1/4"
3	9 1/2"	6 5/8"
4	9 1/2"	5 1/4"
5	9"	3 3/4"

Notes:

Dim. A is the theoretical difference of the Proposed Deck Elev. and Top of Steel Elevations.

Dim. B is from the 1970 Existing Plans.



SECTION D-D

BILL OF MATERIAL

Item	Unit	Total
Modular Expansion Joint 6"	Foot	34

BLANK, WESSELINK, COOK & ASSOCIATES

DECATUR, ILLINOIS

ENGINEERS - CONSULTANTS

DESIGN FIRM NO. 184000894

FILE NAME =	USER NAME =	DESIGNED <i>PBB</i>	REVISED -
		CHECKED <i>MCB</i>	REVISED -
	PLOT SCALE =	DRAWN <i>MLO</i>	REVISED -
	PLOT DATE =	CHECKED <i>PBB/MCB</i>	REVISED -

**STATE OF ILLINOIS
DEPARTMENT OF TRANSPORTATION**

**MODULAR EXPANSION JOINT
STRUCTURE NO. 058-0049**

SHEET NO. 15 OF 39 SHEETS

F.A.P. RTE.	SECTION	COUNTY	TOTAL SHEETS	SHEET NO.
710	(48X-B-2)BR & (48BR)BR	MACON	144	53
CONTRACT NO. 74438				

ILLINOIS FED. AID PROJECT