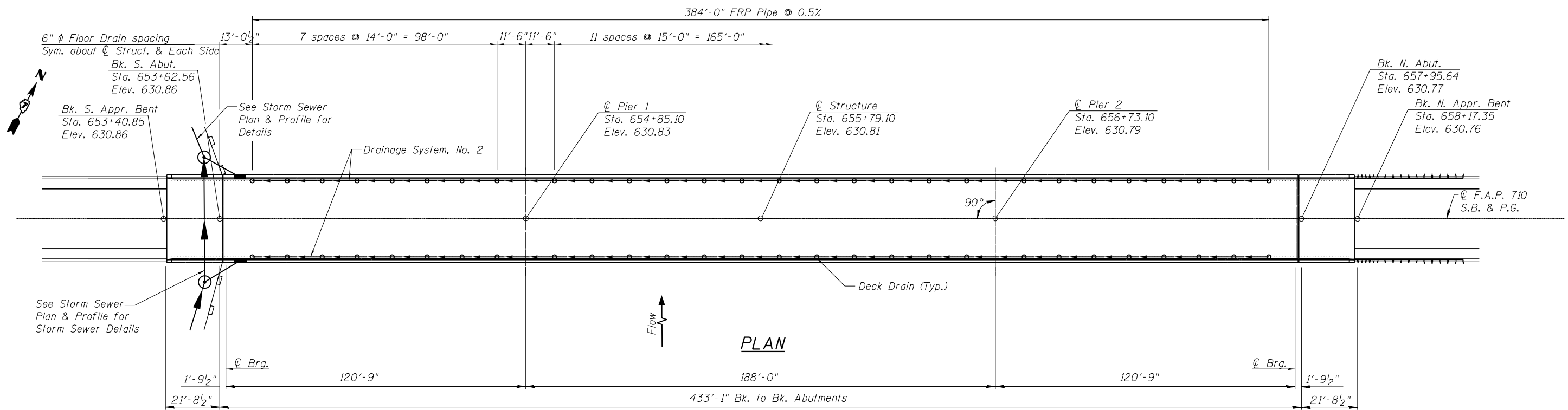


ELEVATION



PLAN

BLANK, WESSELINK, COOK & ASSOCIATES DECATUR, ILLINOIS ENGINEERS - CONSULTANTS DESIGN FIRM NO. 184000894

| | | | |
|-------------|--------------|------------------------|-----------|
| FILE NAME = | USER NAME = | DESIGNED <i>PBB</i> | REVISED - |
| | | CHECKED <i>MCB</i> | REVISED - |
| | PLOT SCALE = | DRAWN <i>MLO</i> | REVISED - |
| | PLOT DATE = | CHECKED <i>PBB/MCB</i> | REVISED - |

STATE OF ILLINOIS
DEPARTMENT OF TRANSPORTATION

DRAINAGE SYSTEM
STRUCTURE NO. 058-0049

SHEET NO. 22 OF 39 SHEETS

| F.A.P. RTE. | SECTION | COUNTY | TOTAL SHEETS | SHEET NO. |
|--------------------|------------------------|--------|--------------|-----------|
| 710 | (48X-B-2)BR & (48BR)BR | MACON | 144 | 60 |
| CONTRACT NO. 74438 | | | | |

ILLINOIS FED. AID PROJECT