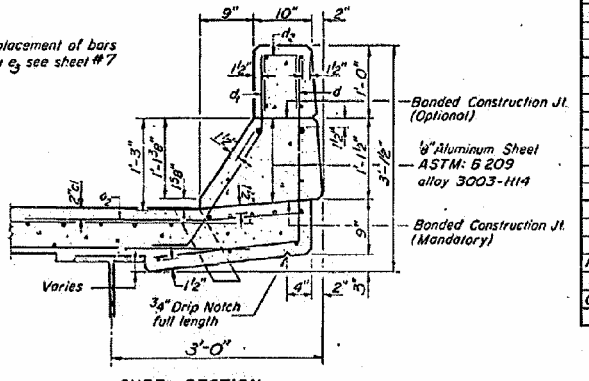
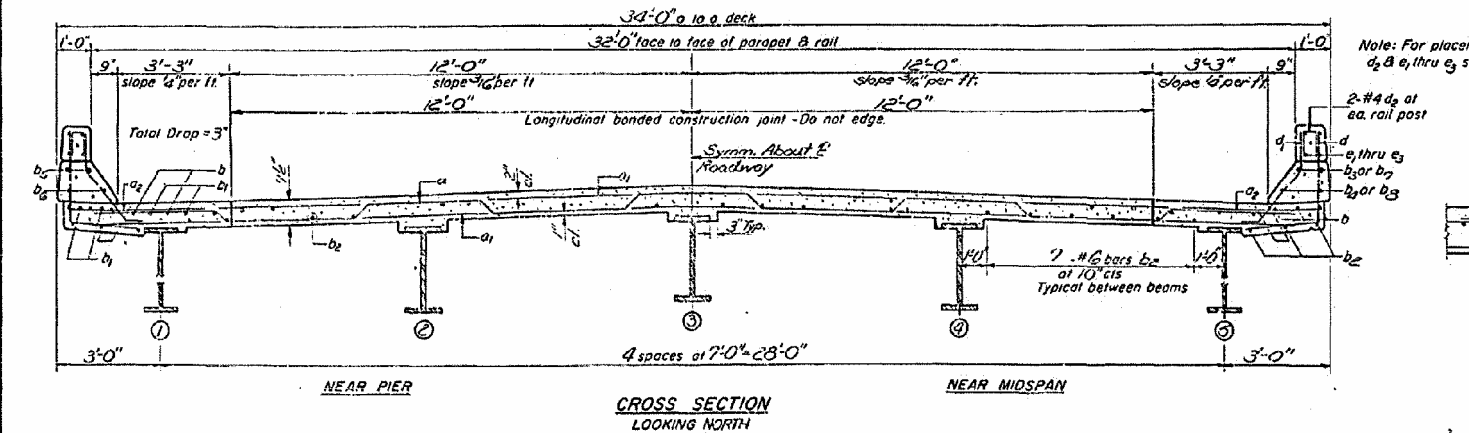
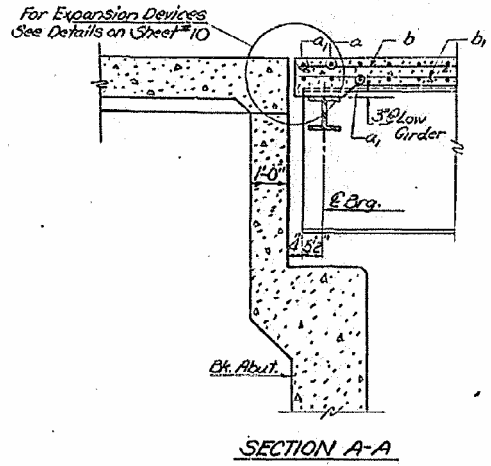
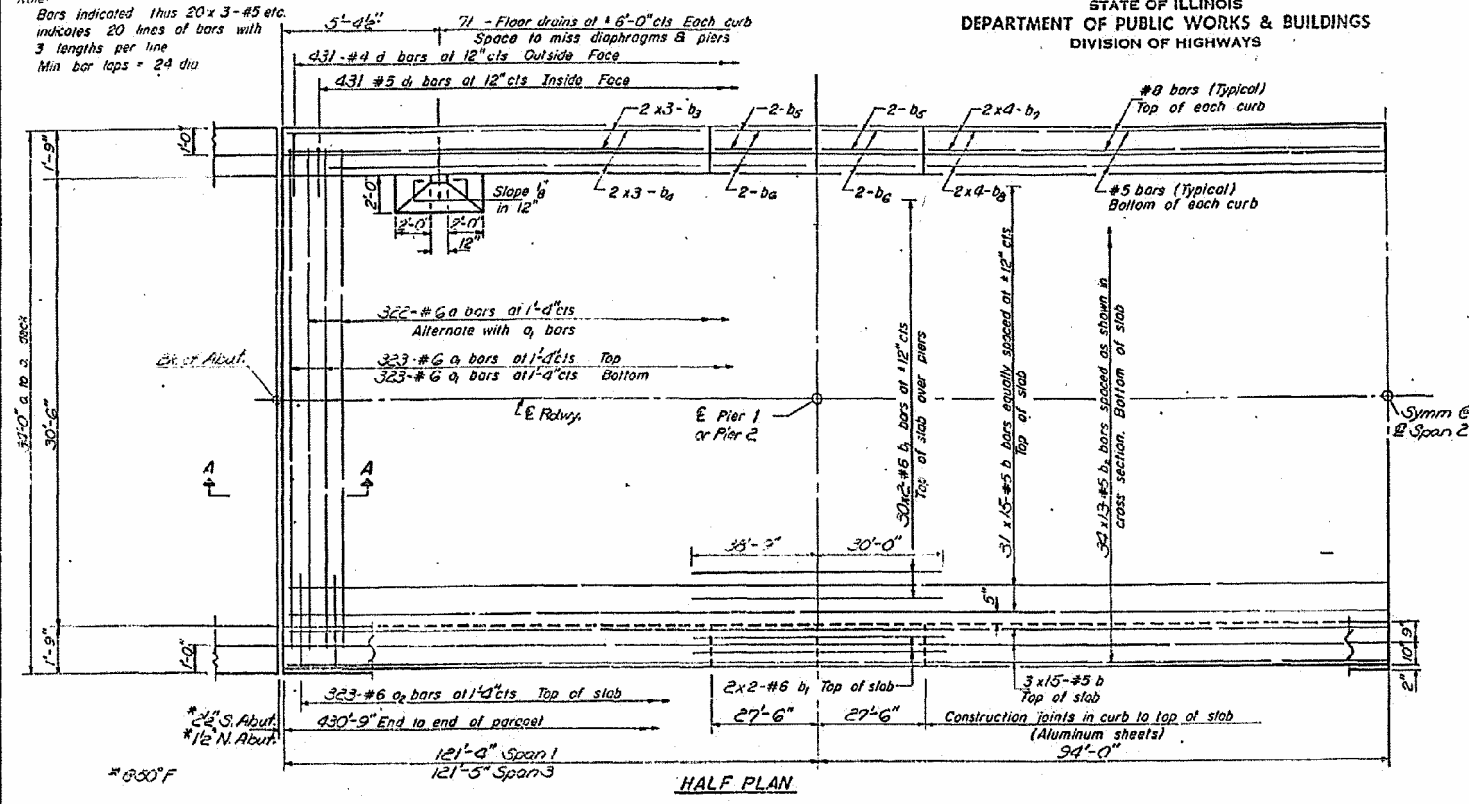


STATE OF ILLINOIS  
DEPARTMENT OF PUBLIC WORKS & BUILDINGS  
DIVISION OF HIGHWAYS

PROJECT NO.	SECTION	COUNTY	TOTAL SHEETS	SHEET NO.	SHEET NO.
2	488A	MACON	26	18	16 SHEETS

Note:  
Bars indicated thus 20 x 3-#5 etc.  
indicates 20 lines of bars with  
3 lengths per line  
Min bar laps = 24 dia



**BILL OF MATERIAL**

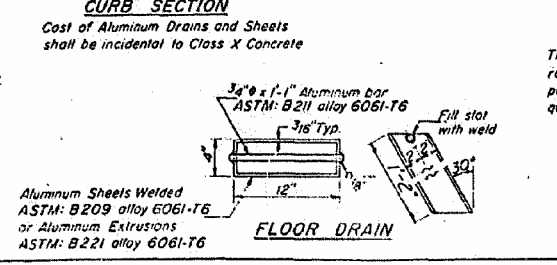
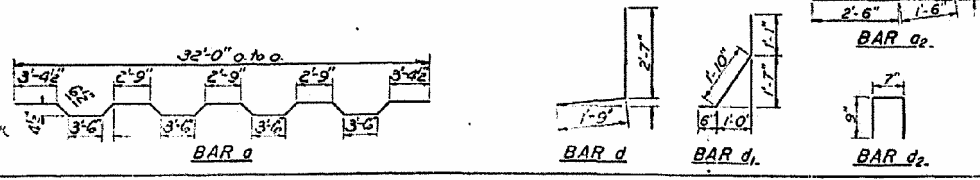
Bar	No	Size	Length	Shape	
a	322	#6	33'-0"		
a1	626	#6	32'-0"		
a2	606	#6	4'-0"		
b	553	#5	30'-0"		
b1	136	#6	32'-3"		
b2	402	#6	32'-0"		
b3	24	#8	32'-9"		
b4	24	#5	32'-3"		
b5	16	#8	27'-3"		
b6	16	#5	27'-3"		
b7	16	#8	34'-9"		
b8	16	#5	34'-3"		
d	862	#4	4'-0"	J	
d1	862	#5	3'-5"	J	
d2	176	#4	2'-1"	U	
Reinforcement Bars				Lbs	110920
Class X Concrete				Cu Yds	4097

DESIGNED: [Signature]  
EXAMINED: [Signature]  
CHECKED: [Signature]  
DRAWN: J. Sutherland  
CHECKED: [Signature]

DES. NO. 30  
1970

APPROVED: [Signature]

1-4 to 6-0 3-1-69, 12-3-69



The lengths and quantities of longitudinal reinforcement and Class X Concrete in parapets are not included in above quantities. See sheet #7

**SUPERSTRUCTURE**  
F.A. RT. 2 SEC. 48 BR  
MACON COUNTY  
SECTION 655+79.1W

BLANK, WESSELINK, COOK & ASSOCIATES DECATUR, ILLINOIS ENGINEERS - CONSULTANTS DESIGN FIRM NO. 184000894

FILE NAME =	USER NAME =	DESIGNED PBB	REVISED -
	CHECKED	CHECKED	REVISED -
	PLOT SCALE =	DRAWN MLO	REVISED -
	PLOT DATE =	CHECKED	REVISED -

STATE OF ILLINOIS  
DEPARTMENT OF TRANSPORTATION

EXISTING BRIDGE PLANS

SHEET NO. 27 OF 39 SHEETS

F.A.P. RTE.	SECTION	COUNTY	TOTAL SHEETS	SHEET NO.
710	(48X-B-2)BR & (48BR)BR	MACON	144	65
				CONTRACT NO. 74438

ILLINOIS FED. AID PROJECT