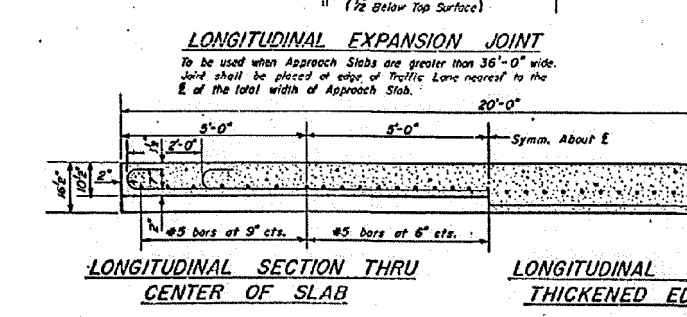
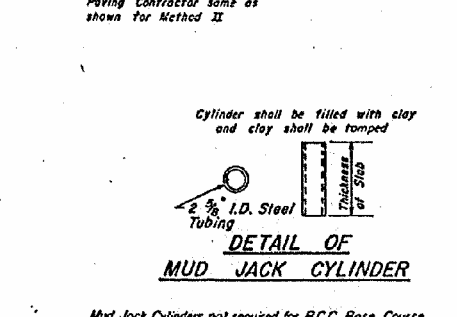
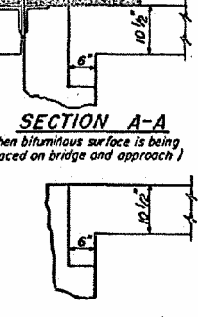
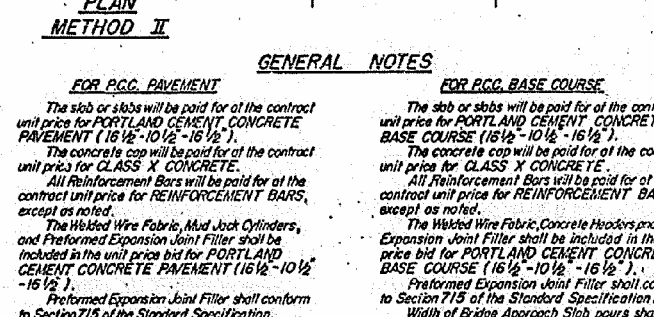
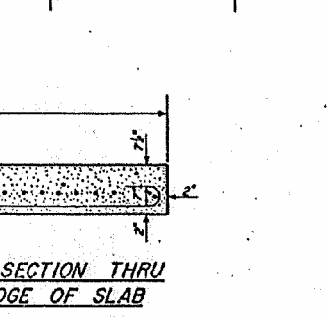
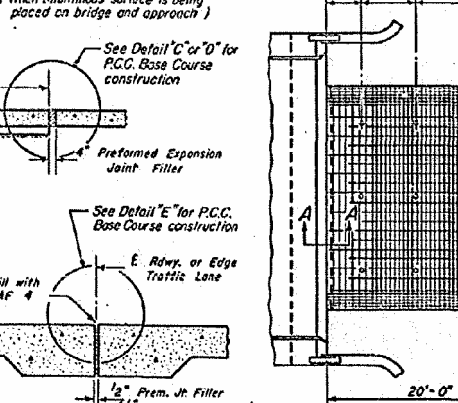
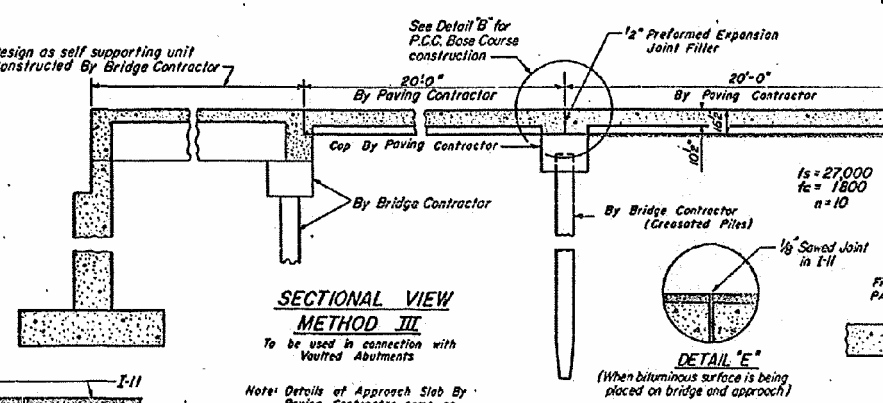
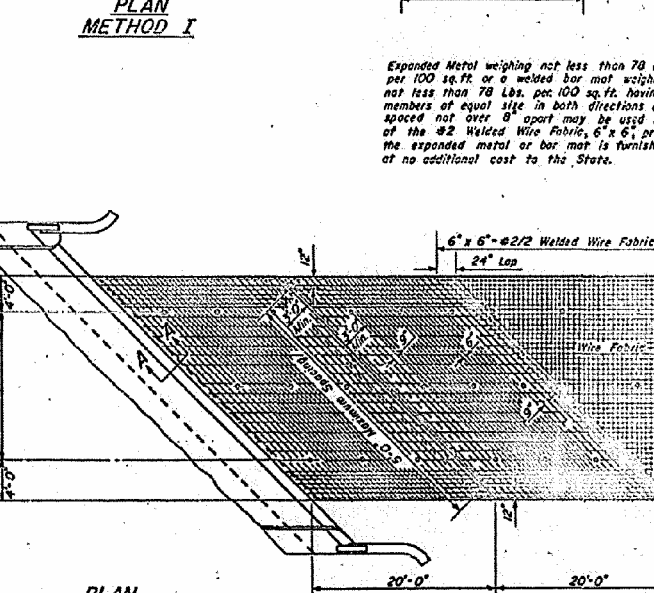
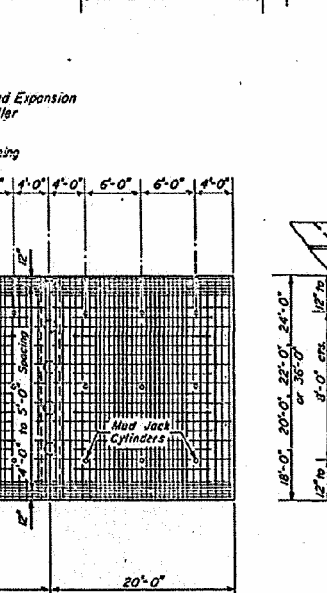
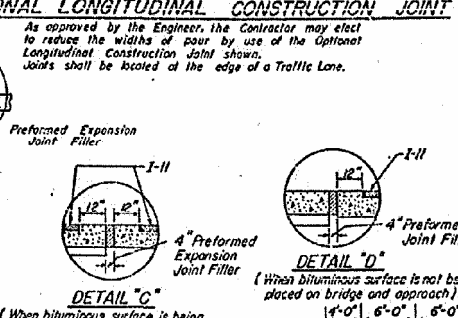
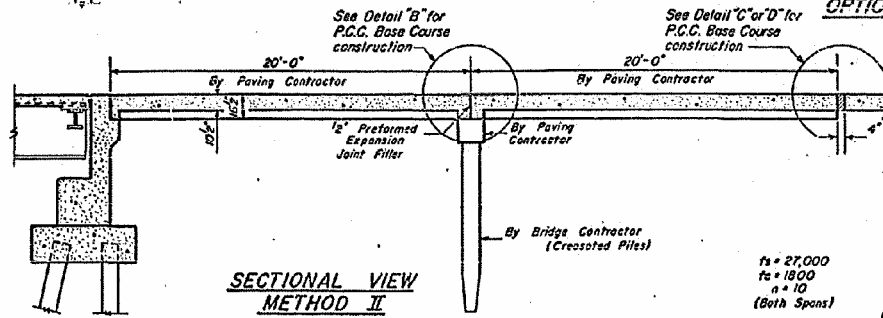
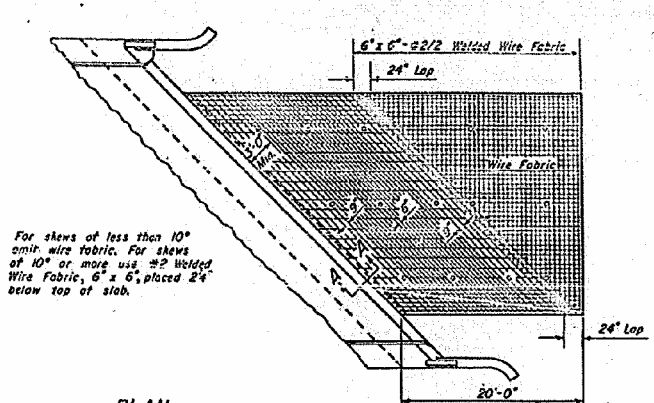
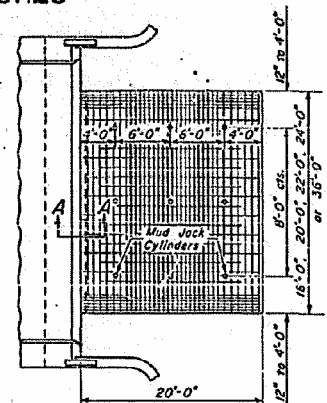
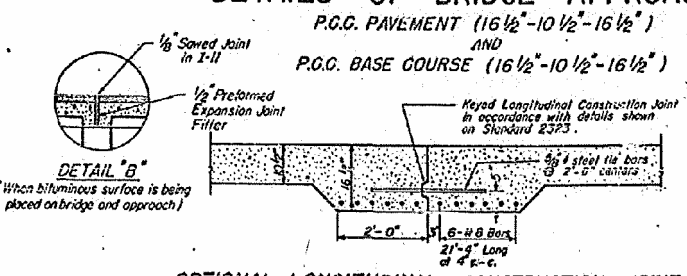
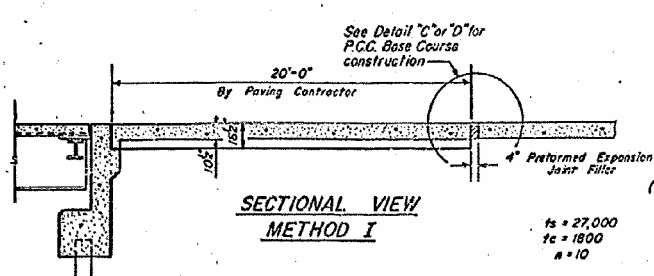


DETAILS OF BRIDGE APPROACHES

P.C.C. PAVEMENT (16 1/2'-10 1/2'-16 1/2')
AND
P.C.C. BASE COURSE (16 1/2'-10 1/2'-16 1/2')



GENERAL NOTES

FOR P.C.C. PAVEMENT
The slab or slabs will be paid for at the contract unit price for PORTLAND CEMENT CONCRETE PAVEMENT (16 1/2'-10 1/2'-16 1/2').
The concrete cap will be paid for at the contract unit price for CLASS X CONCRETE.
All Reinforcement Bars will be paid for at the contract unit price for REINFORCEMENT BARS, except as noted.
The Welded Wire Fabric, Mud Jack Cylinders, and Preformed Expansion Joint Filler shall be included in the unit price bid for PORTLAND CEMENT CONCRETE PAVEMENT (16 1/2'-10 1/2'-16 1/2').
Preformed Expansion Joint Filler shall conform to Section 715 of the Standard Specification.
Width of Bridge Approach Slab pours shall be determined before the reinforcement bars are fabricated.
The Contractor shall, after completion of the finishing operations, mark the location of the Mud Jack Cylinders.

FOR P.C.C. BASE COURSE
The slab or slabs will be paid for at the contract unit price for PORTLAND CEMENT CONCRETE BASE COURSE (16 1/2'-10 1/2'-16 1/2').
The concrete cap will be paid for at the contract unit price for CLASS X CONCRETE.
All Reinforcement Bars will be paid for at the contract unit price for REINFORCEMENT BARS, except as noted.
The Welded Wire Fabric, Concrete Headers and Preformed Expansion Joint Filler shall be included in the unit price bid for PORTLAND CEMENT CONCRETE BASE COURSE (16 1/2'-10 1/2'-16 1/2').
Preformed Expansion Joint Filler shall conform to Section 715 of the Standard Specification.
Width of Bridge Approach Slab pours shall be determined before the reinforcement bars are fabricated.

Note: When road plans show curb and gutter or gutter adjacent to approach slabs place 1/2" steel 1/8 bars at 2'-6" cts. Cost of the bars included in contract unit price for Curb & Gutter or Gutter.
The transition for gutter shall be made in 100 feet and will be paid for as CONCRETE GUTTER, of the type specified.
The transition for curb and gutter shall be made in 20 feet and will be paid for as COMBINATION CURB and GUTTER, of the type specified.

STATE OF ILLINOIS DEPARTMENT OF PUBLIC WORKS AND BUILDINGS DIVISION OF HIGHWAYS	ISSUED 12-18-58	For Paper Joint
DESIGNED	WAJ 2-2-59	W.F. 5-10-67
CHECKED	CET 10-22-59	W.F. 7-15-63
DRAWN	W.S. 12-9-59	GR. 0-1-69
APPROVED	W.H.F. 9-17-63	J.K.P. 10-15-69
	K.H.W. 7-29-64	W.F. 10-28-64

BLANK, WESSELINK, COOK & ASSOCIATES DECATUR, ILLINOIS ENGINEERS - CONSULTANTS DESIGN FIRM NO. 184000894

FILE NAME =	USER NAME =	DESIGNED PBB	REVISOR =
	CHECKED	W.F.	REVISION =
	DRAWN MLO	W.F.	REVISION =
	CHECKED	W.F.	REVISION =

STATE OF ILLINOIS
DEPARTMENT OF TRANSPORTATION

EXISTING BRIDGE PLANS

SHEET NO. 34 OF 39 SHEETS

STANDARD 1909-10

F.A.P. R.T.E.	SECTION	COUNTY	TOTAL SHEETS	SHEET NO.
710	148X-B-2BR & 148BRIBR	MACON	144	72
CONTRACT NO. 74438				

ILLINOIS FED. AID PROJECT